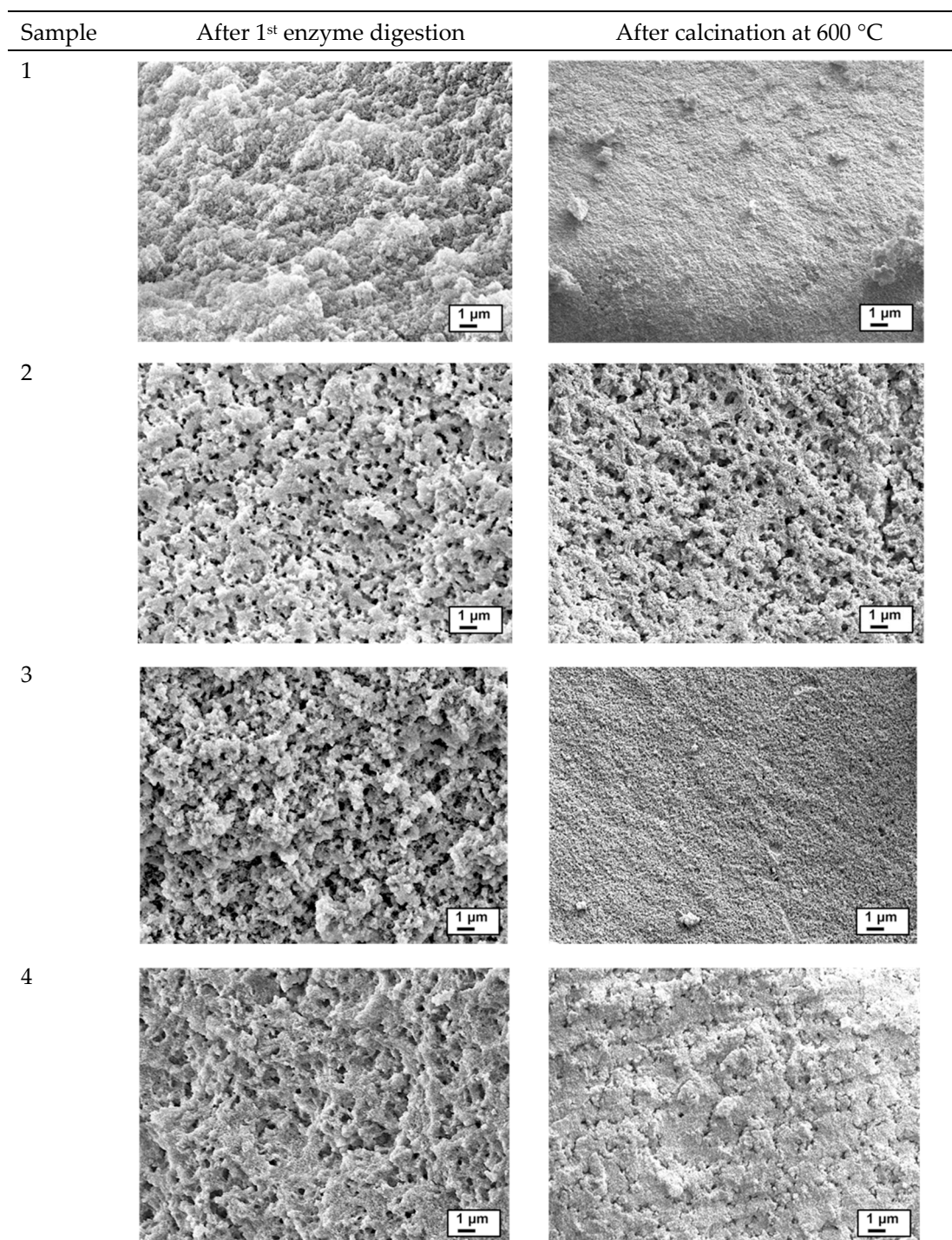
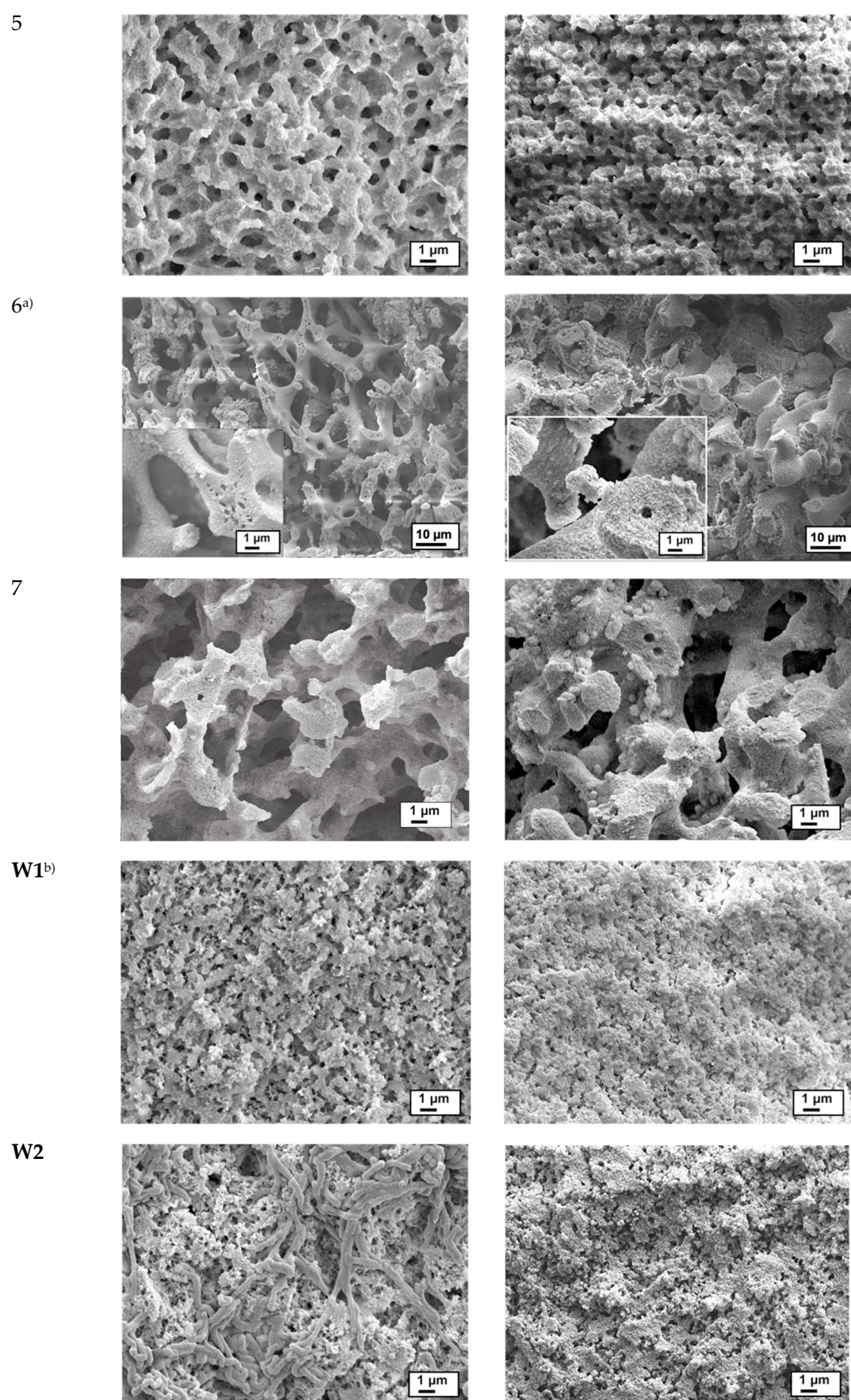


# Starch-directed Synthesis of Worm-shaped Silica Microtubes





**Figure S1.** SEM images of the samples after 1<sup>st</sup> enzyme digestion (left) and after further calcination (right), magnification  $\times 5000$ . <sup>a)</sup> The SEM image of sample 6 is at a lower resolution than the other

images, except for the inset image. <sup>b)</sup> The SEM image of sample **W1** was taken in an area of the sample that did not exhibit worm structures.