

Figure S1. Tree-ring series of *Cupressus sempervirens* trees from Symi.

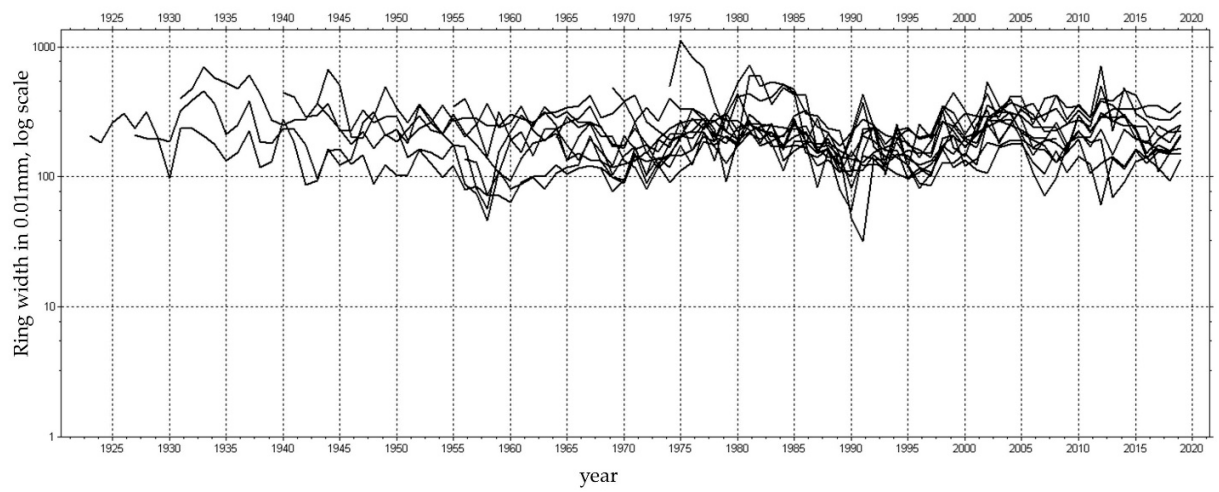


Figure S2. Tree-ring series of *Quercus ithaburensis* subsp. *macrolepis* trees from Symi.

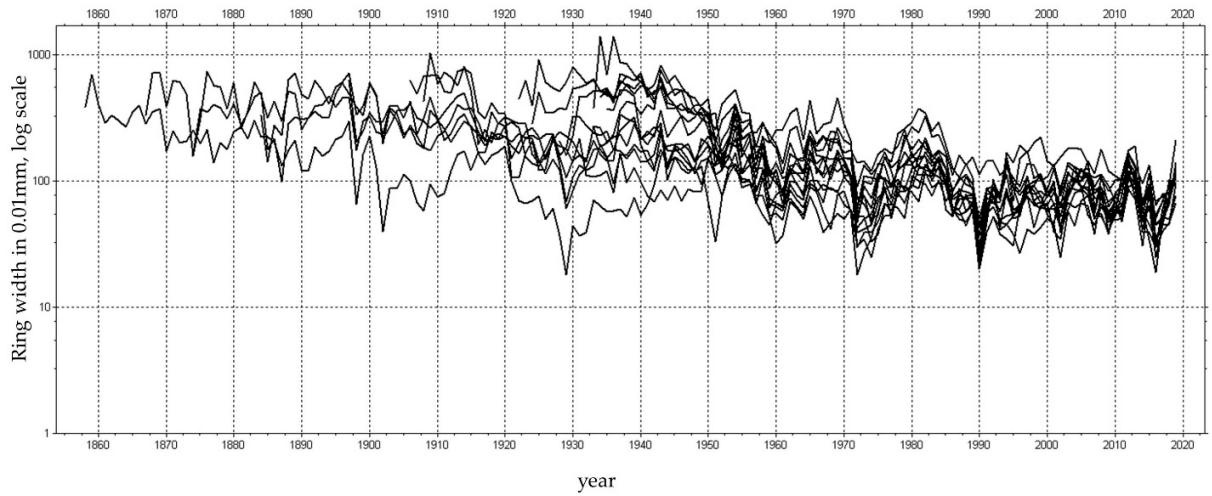


Figure S3. Tree-ring series of *Pinus brutia* trees from Symi.

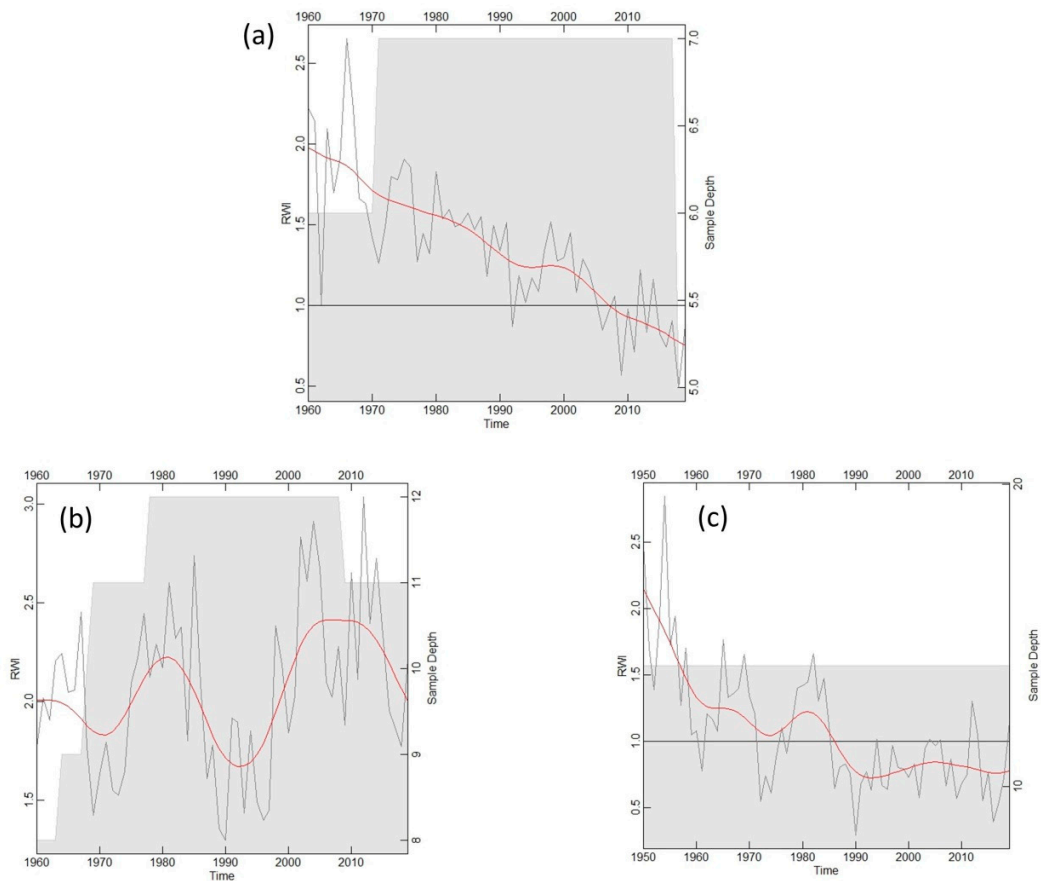


Figure S4. Mean chronologies without detrending developed for the three dominant tree species from Symi for the time period with sufficient replication and without juvenile wood. The sample depth is also shown: (a) *Cupressus sempervirens*; (b) *Quercus ithaburensis* subsp. *macrolepis*; (c) *Pinus brutia*.

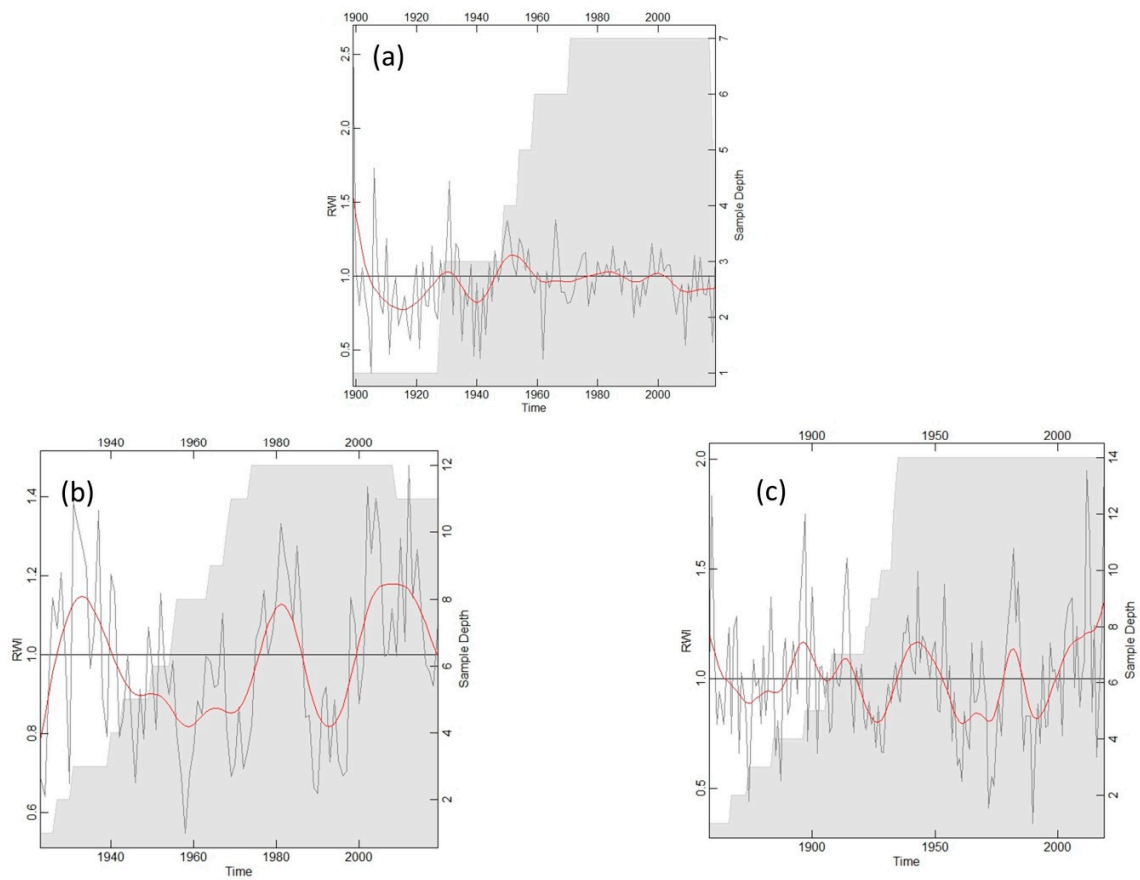


Figure S5. Mean chronologies developed for the three dominant tree species from Symi after detrending. The sample depth is also shown: (a) *Cupressus sempervirens*; (b) *Quercus ithaburensis* subsp. *macrolepis*; (c) *Pinus brutia*.