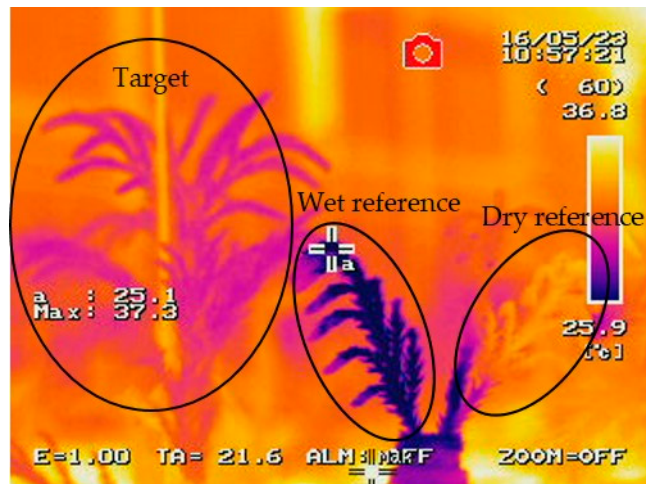
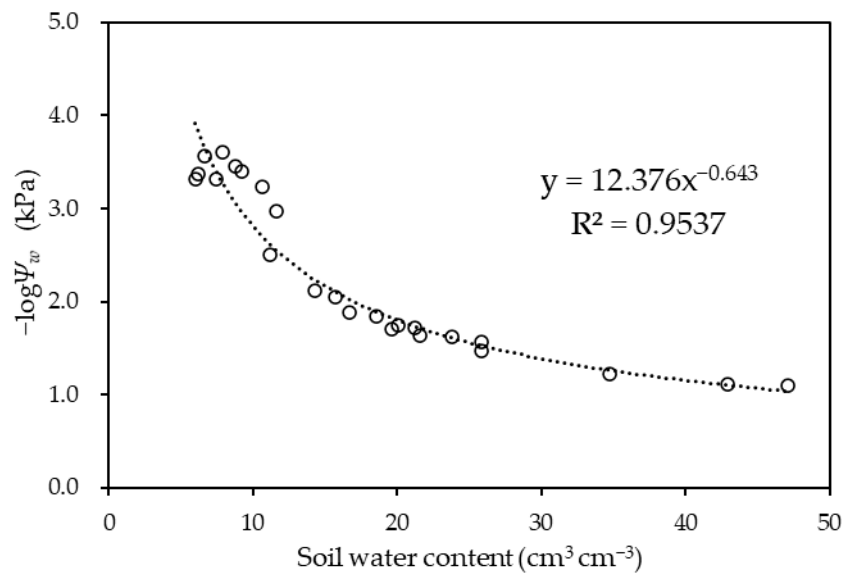


**Figure S1.** Changes of the soil water content over the course of the drought experiment. Open and solid circles denote the drought and control treatments, respectively. Black, red, green, and blue correspond to GO1, KA7, TE11, and TS1, respectively.



**Figure S2.** The thermograph taken to obtain the stomatal conductance index ( $I_g$ ). Target: Target individual to measure the  $I_g$  used in the experiment. Wet reference: The leaves that were sprayed regularly with water to maintain their moisture levels. Dry reference: The leaves that were coated with a mixture of petroleum jelly and liquid paraffin (1:2 by weight).



**Figure S3.** Relationship between the soil water content and soil water potential ( $\log \Psi_w$ ) of the mixed-culture soil used in the experiment.