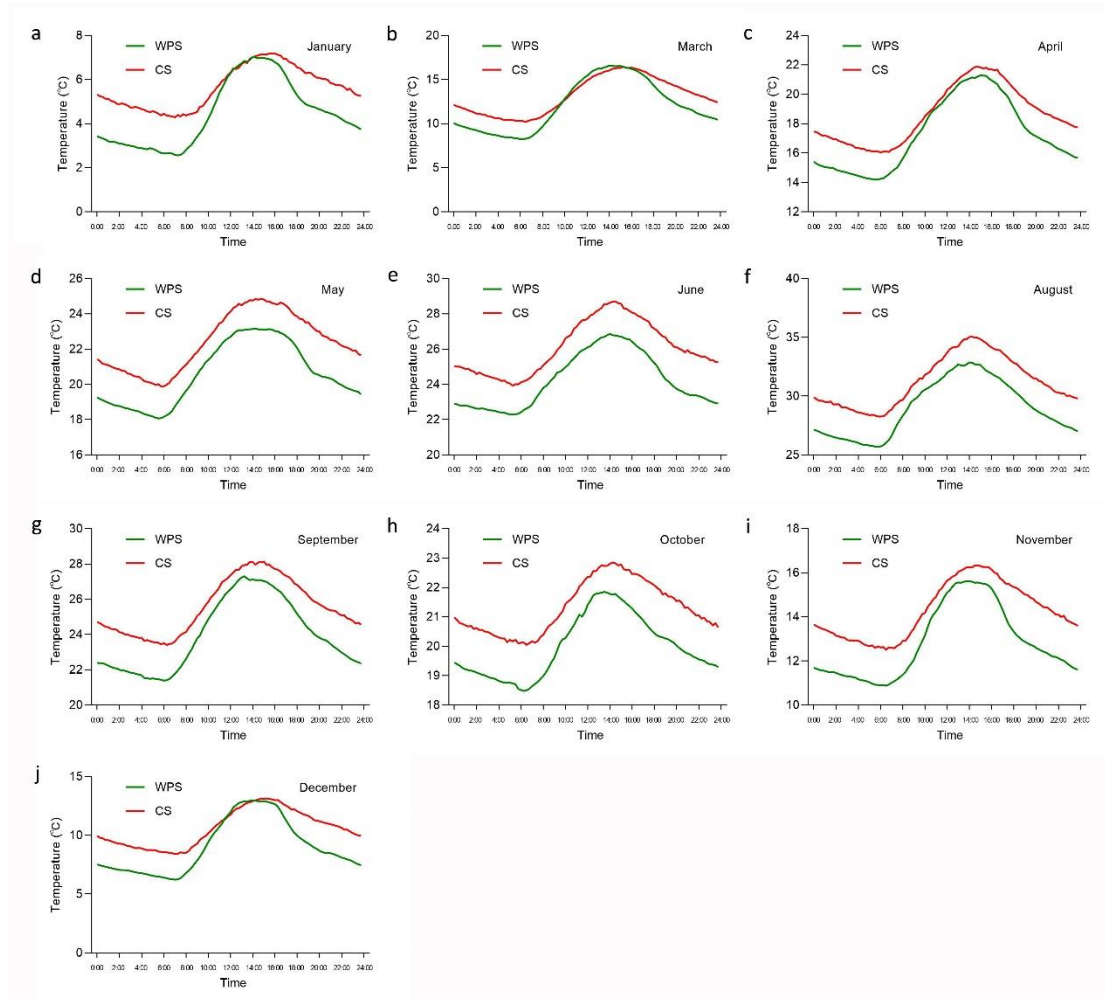
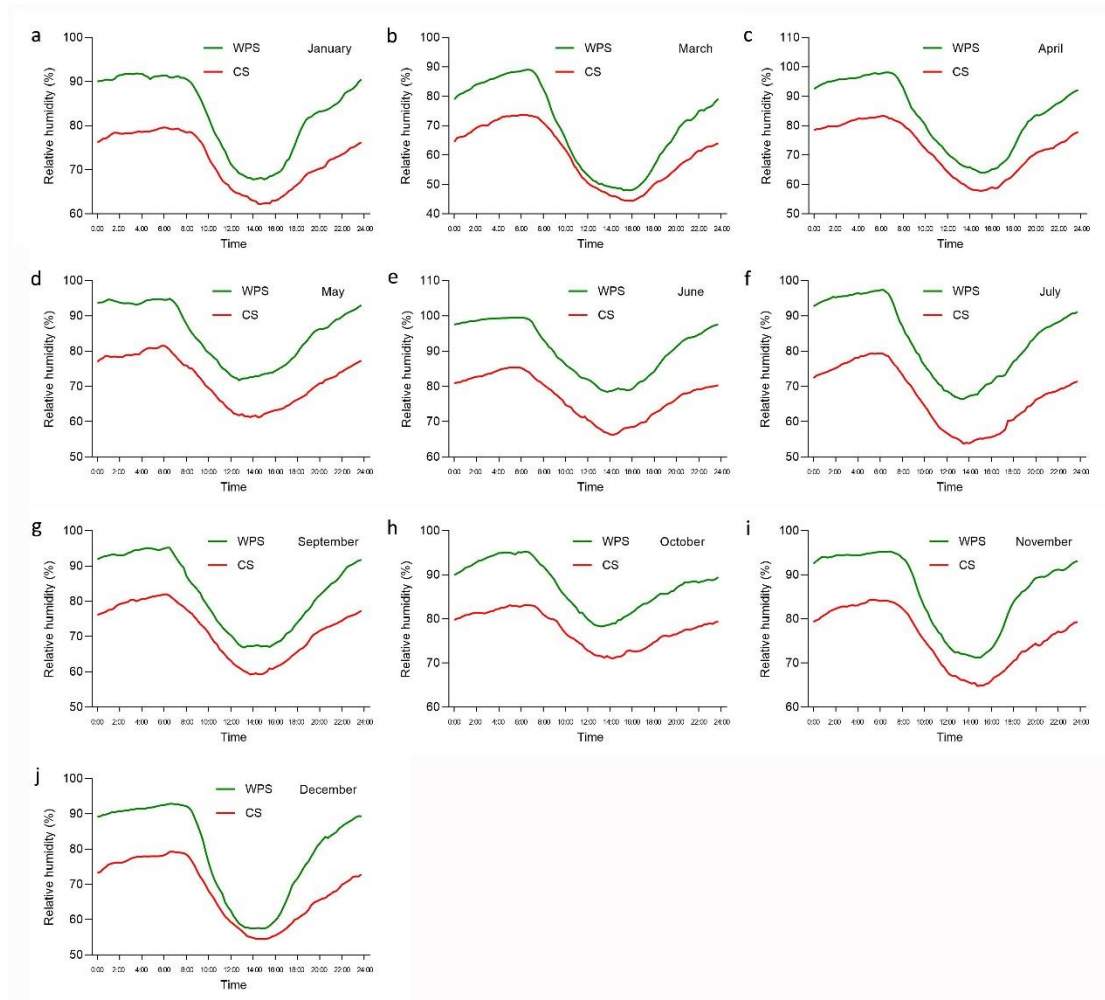


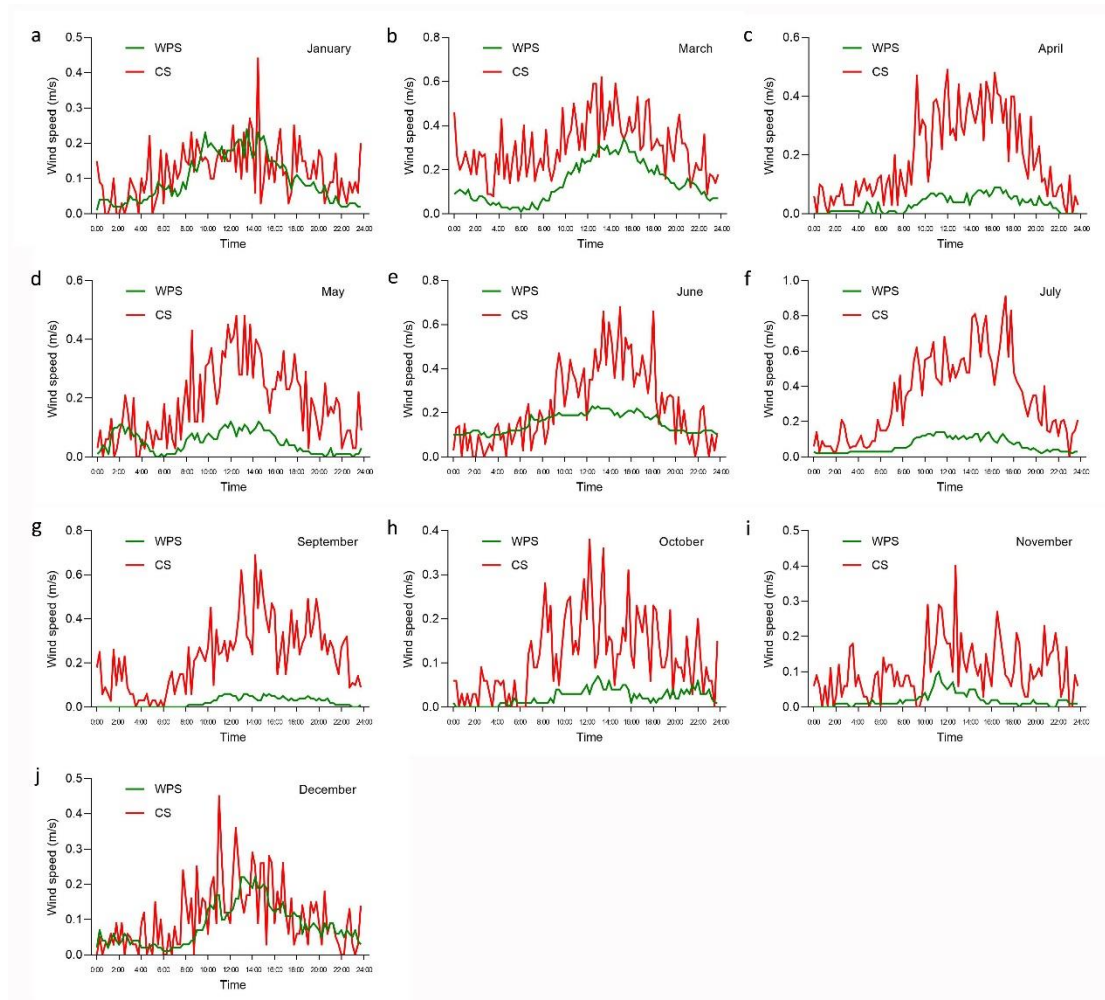
# The Temporal Variation of the Microclimate and Human Thermal Comfort in Urban Wetland Parks: A Case Study of Xixi National Wetland Park, China



**Figure S1.** The daily variations of the average temperature. (a) January; (b-e) between March and June; (f-j) between August and December.



**Figure S2.** The daily variations of the average relative humidity. (a) January; (b-f) between March and July; (g-j) between September and December.



**Figure S3.** The daily variations of the average wind speed. (a) The daily variation of the average wind speed in January; (b-f) The daily variation of the average wind speed between March and July; (g-j) The daily variation of the average wind speed between September and December.