

Supplementary Materials: The following are available online at <https://www.mdpi.com/article/10.3390/f12101421/s1>,

Table S1. Description of study plots in Puławy Forest District. GPS, Coordinates of the Study Plot.

	PLOTS							P reference
	P1	P2	P3	P4	P5	P6	P7	
GPS, Coordinates of study Plot	51°5' N 21°97' E	51°4' N 20°01' E	51°4' N 20°01' E	51°51' N 21°91' E	51°41' N 22°15' E	51°50' N 22°01' E	51°22' N 22°00' E	51°51' N 21°91' E
Forest/ No. forest plot	Skoki 65,66,59,58	Wronów 138	Wronów 139	Skoki 82	Kozi Bór 142	Żyrzyn 83	Gołęb 63d	Gołęb 46c
Share of the pine in the study plot [by crown cover]	100%	70-80%	80%	100%	90%	90%	90%	100%
The age of the trees/Chronology length	129 1886-2015	126 1889-2015	127 1888-2015	123 1892-2015	118 1897-2015	124 1891-2015	131 1884-2015	128 1884-2015
Forest Habitat type	Oligotrophic Mixed Coniferous Forest							
Type of soil [WBR classification]	Albic Podzols	Brunic Arenosols	Eutric/ Dystric Brunic Arenosols	Brunic Arenosols	Brunic Arenosols	Brunic Arenosols	Eutric/ Dystric Brunic Arenosols	Albic Podzols

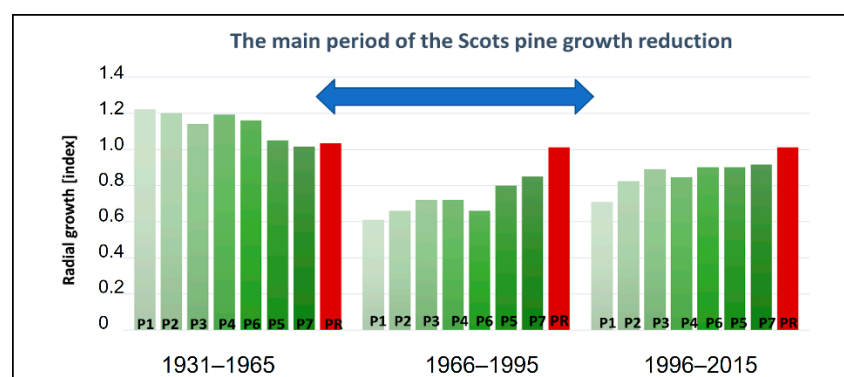


Figure S1. The Tree-ring reduction caused by air pollution from Zakłady Azotowe Puławy.

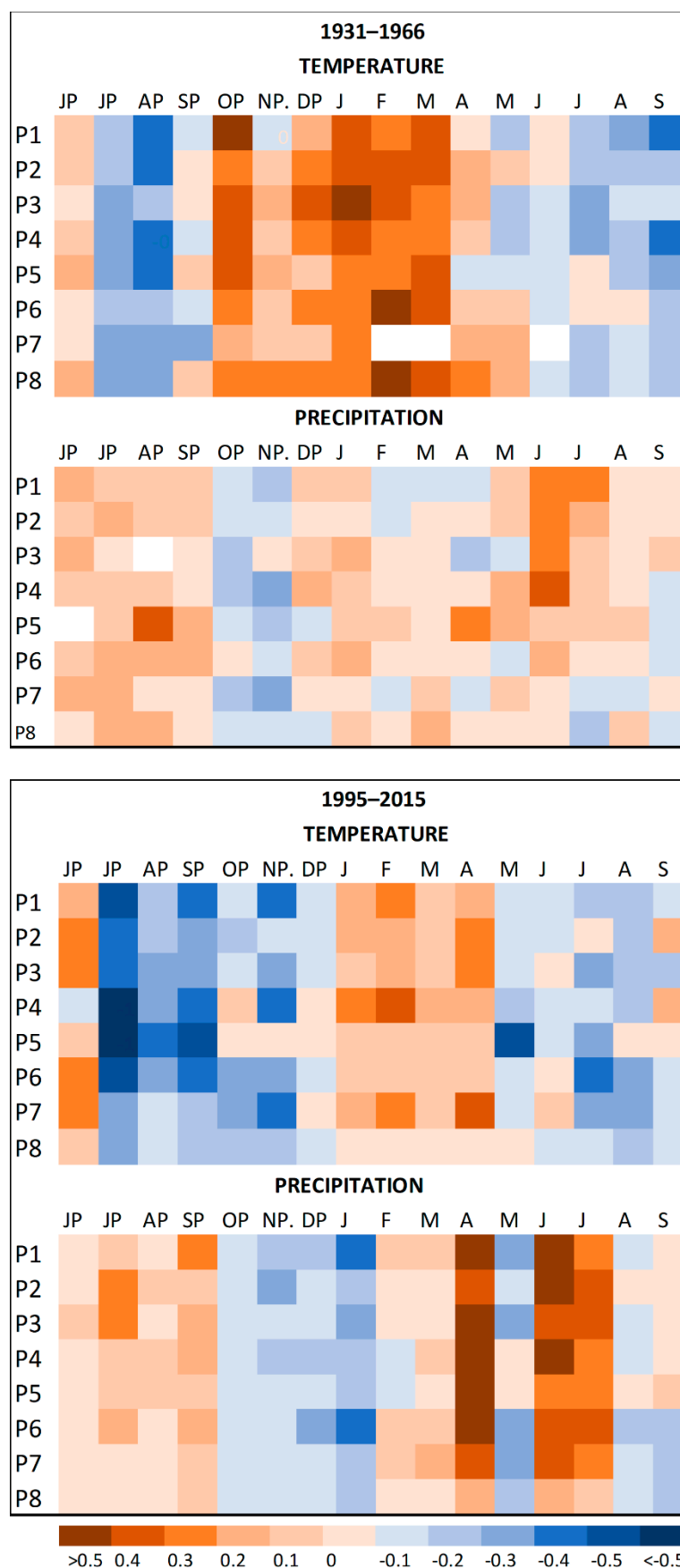


Figure S2. Climate-growth relationships between residual chronologies and air temperature and precipitation