

**Table S1.** Dates of Sentinel-2 Level-1C products used in the study.

Case study	Pre-fire date	Post-fire date
LUC	2 July 2019	6 August 2019
ISC_1	11 August 2019	21 August 2019
ISC_2	11 August 2019	21 August 2019
CAR	11 August 2019	21 August 2019

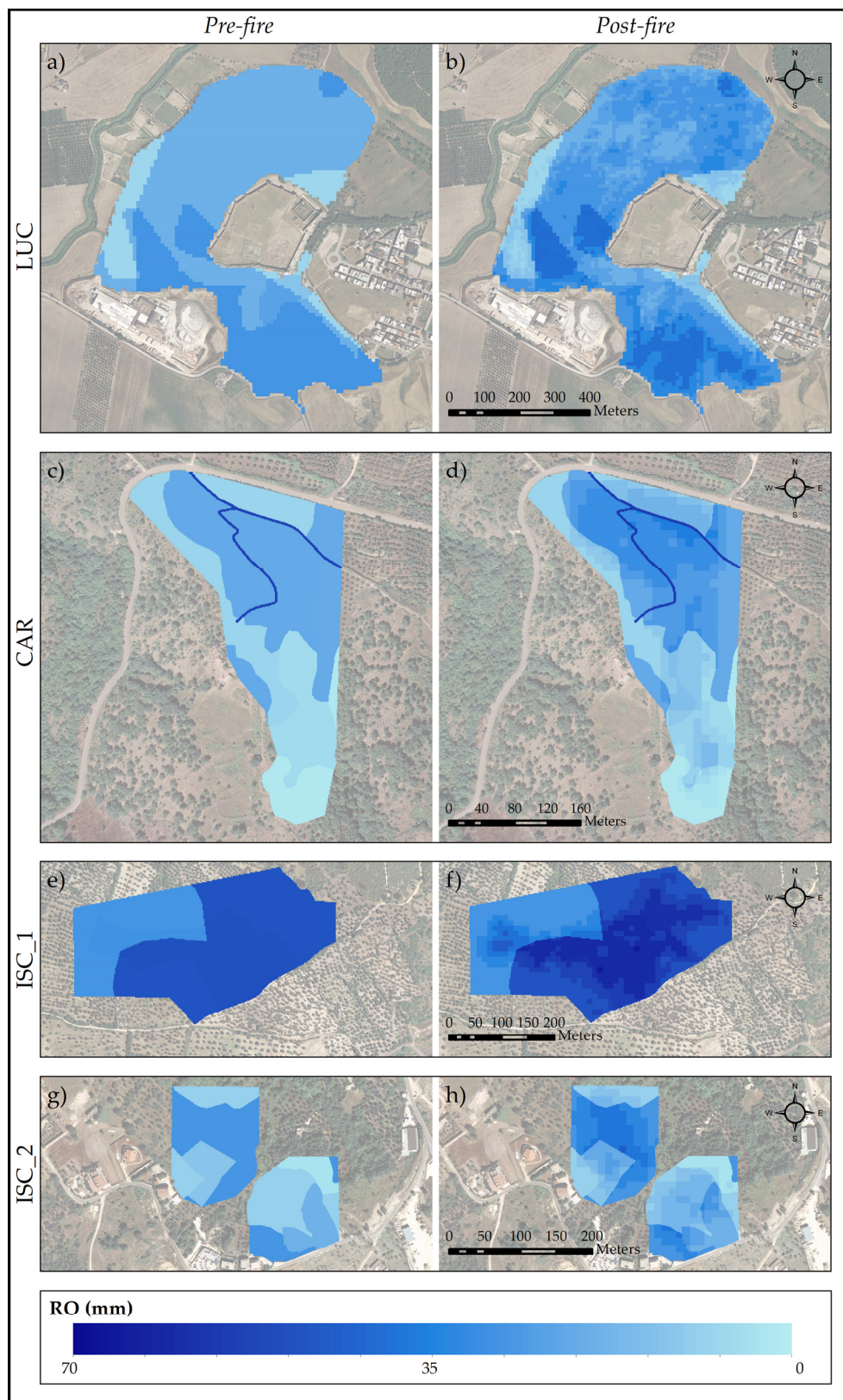
**Table S2.** Areal percentage of land use per study site.

	LUC	CAR	ISC_1	ISC_2*
Deciduous Forest	64.1	9.8	-	6.3
Rangeland	32.9	46.1	36.7	9.4
Rangeland with bush	3.0	32.0	-	33.5
Olive Grove	-	12.1	63.3	39.5

\*In ISC\_2 site there is a 11.3% of urban area, which is not considered in the elaborations.

**Table S3.** CN-AMCIII per land use and soil group used for each study site.

	LUC		CAR		ISC_1		ISC_2
Soil Group	B	D	A	A	C	A	
Deciduous Forest	77.8	89.8	56.8	-	-	56.8	
Olive Grove	-	-	82.6	82.6	93.0	82.6	
Rangeland	-	95	83.3	83.3	-	69.2	
Rangeland with bush	-	92.5	65.7	-	-	-	



**Figure S1.** Pre- and post-fire runoff values (mm) for each study site: a-b) LUC; c-d) CAR; e-f) ISC\_1; g-h) ISC\_2.