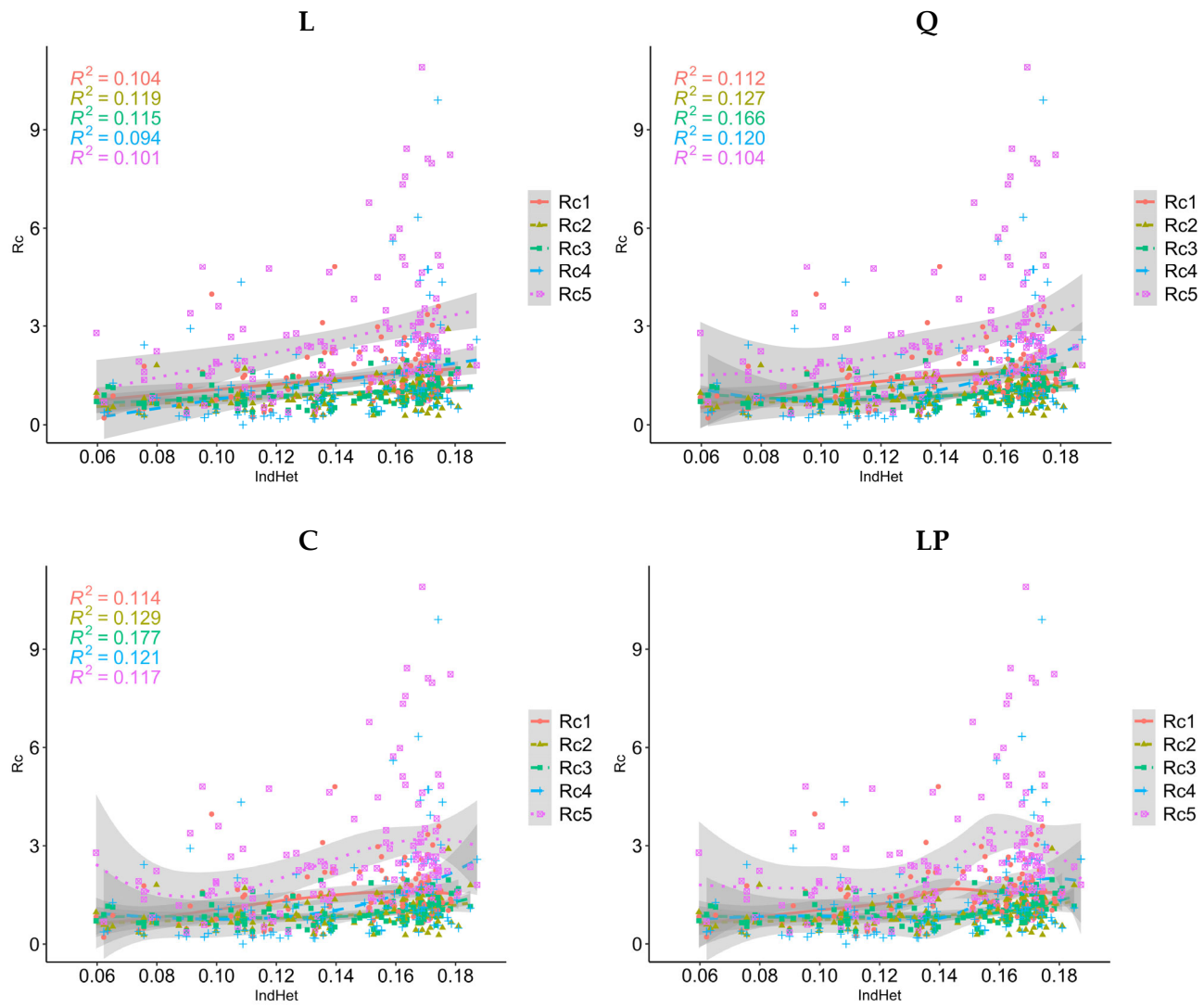
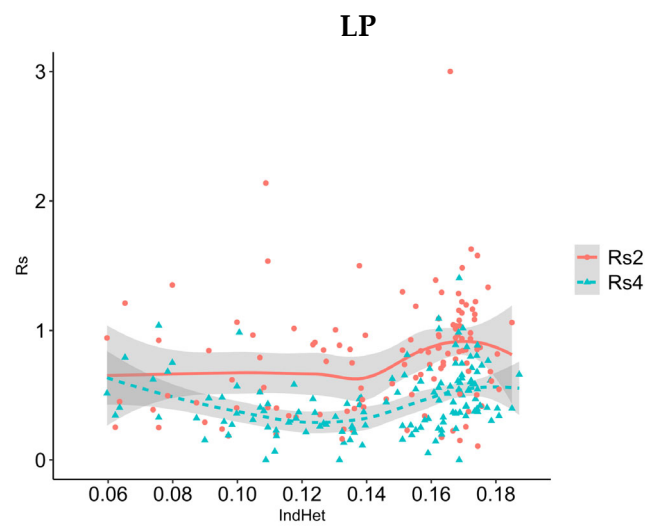
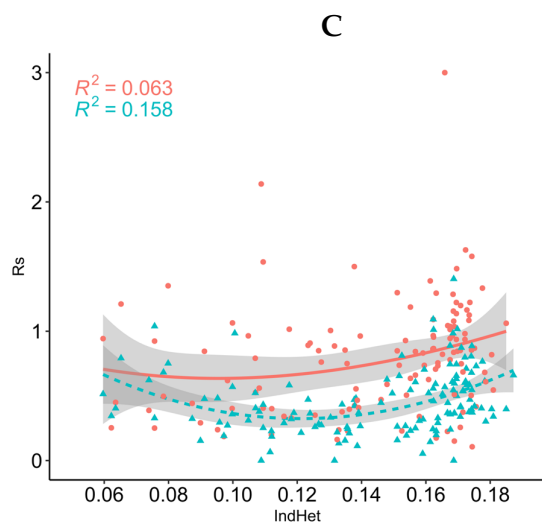
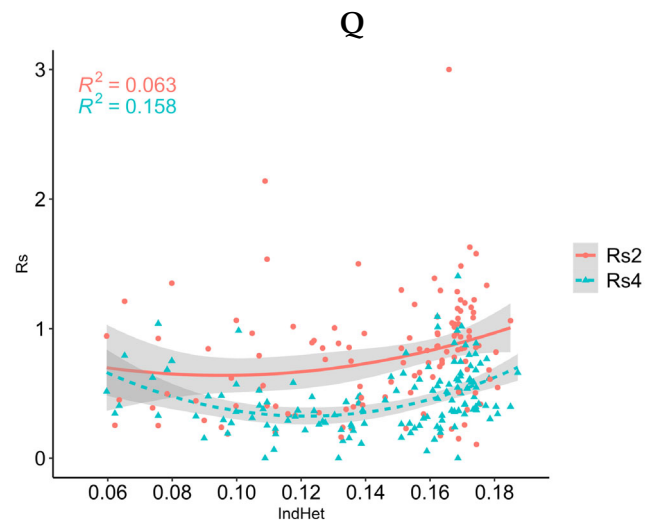
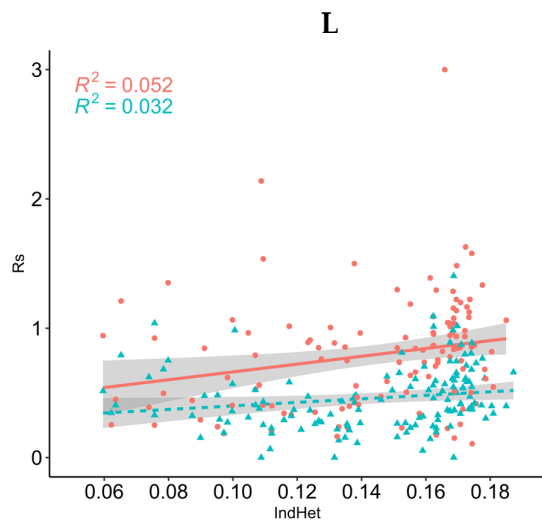


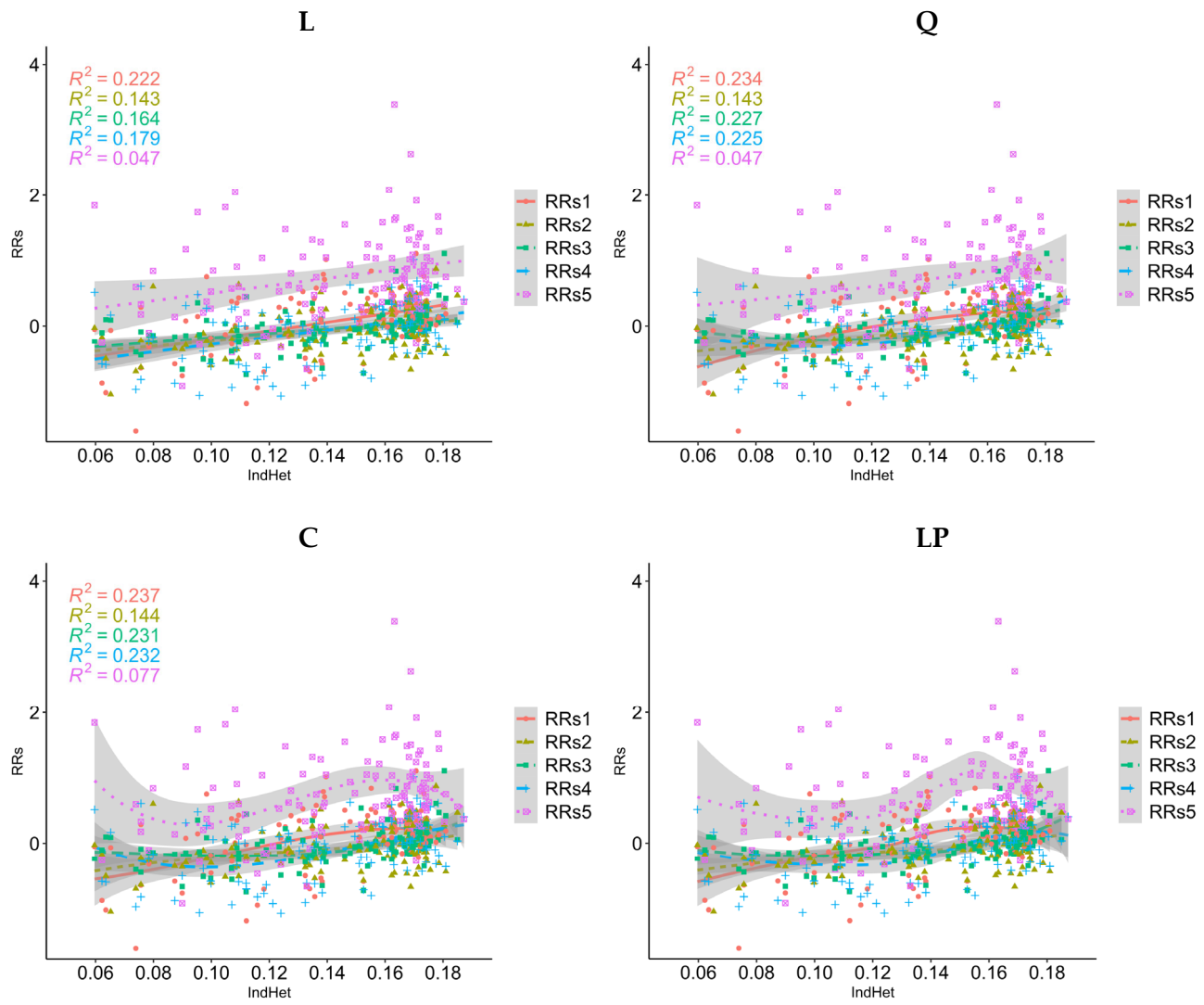
Dendrophenotype	<i>r</i>	<i>P</i>	<i>rs</i>	<i>P</i>
Rt1	-0.432*	<0.0001	-0.378*	<0.0001
Rt2	-0.076	0.4014	0.021	0.8144
Rt3	-0.286*	0.0011	-0.258*	0.0034
Rt4	-0.342*	<0.0001	-0.280*	0.0010
Rt5	-0.203*	0.0216	-0.215*	0.0146



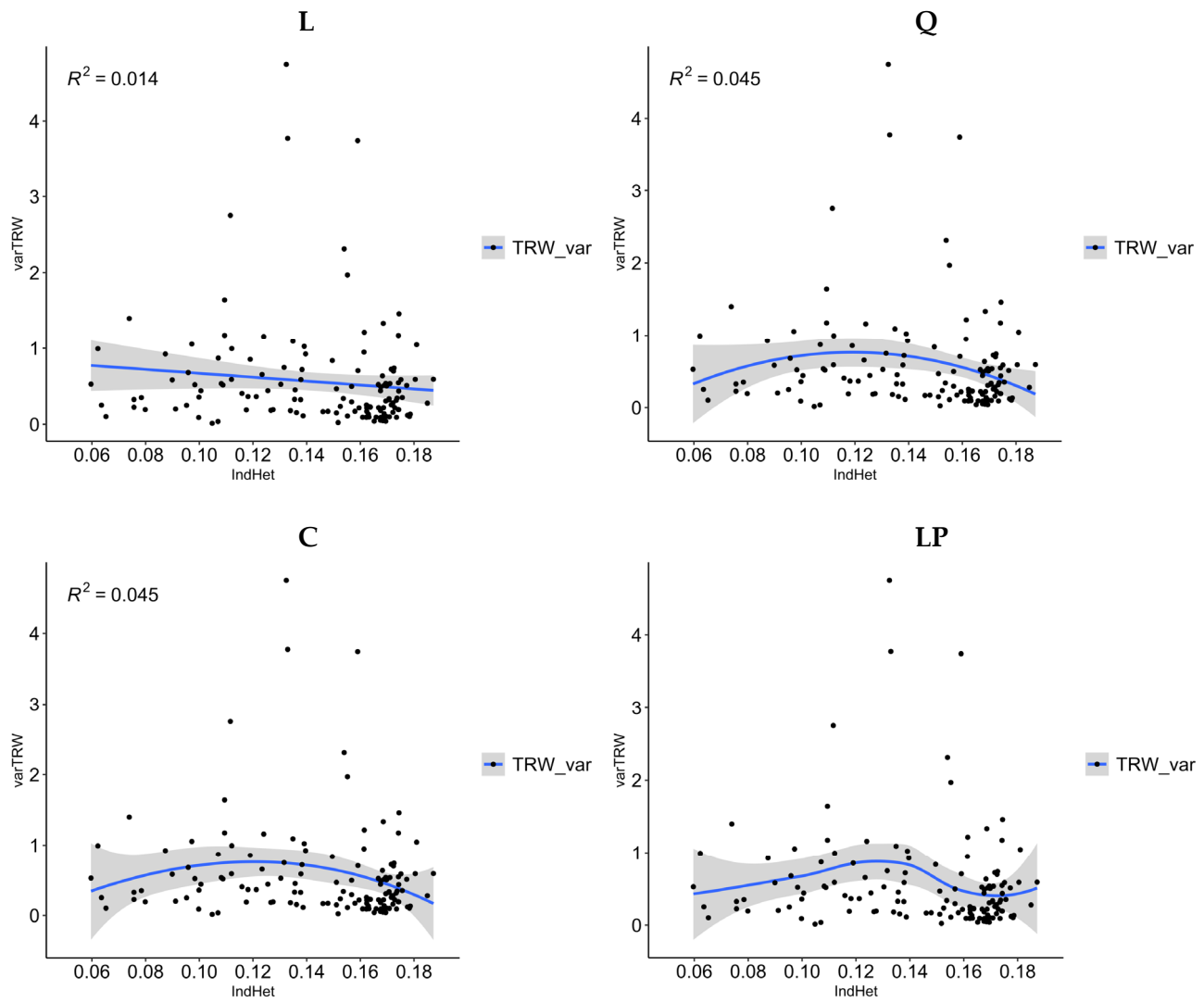
Dendrophenotype	<i>r</i>	<i>P</i>	<i>rs</i>	<i>P</i>
Rc1	0.322*	0.0004	0.366*	<0.0001
Rc2	0.345*	<0.0001	0.351*	<0.0001
Rc3	0.339*	<0.0001	0.437*	<0.0001
Rc4	0.307*	0.0007	0.435*	<0.0001
Rc5	0.318*	0.0003	0.331*	0.0002



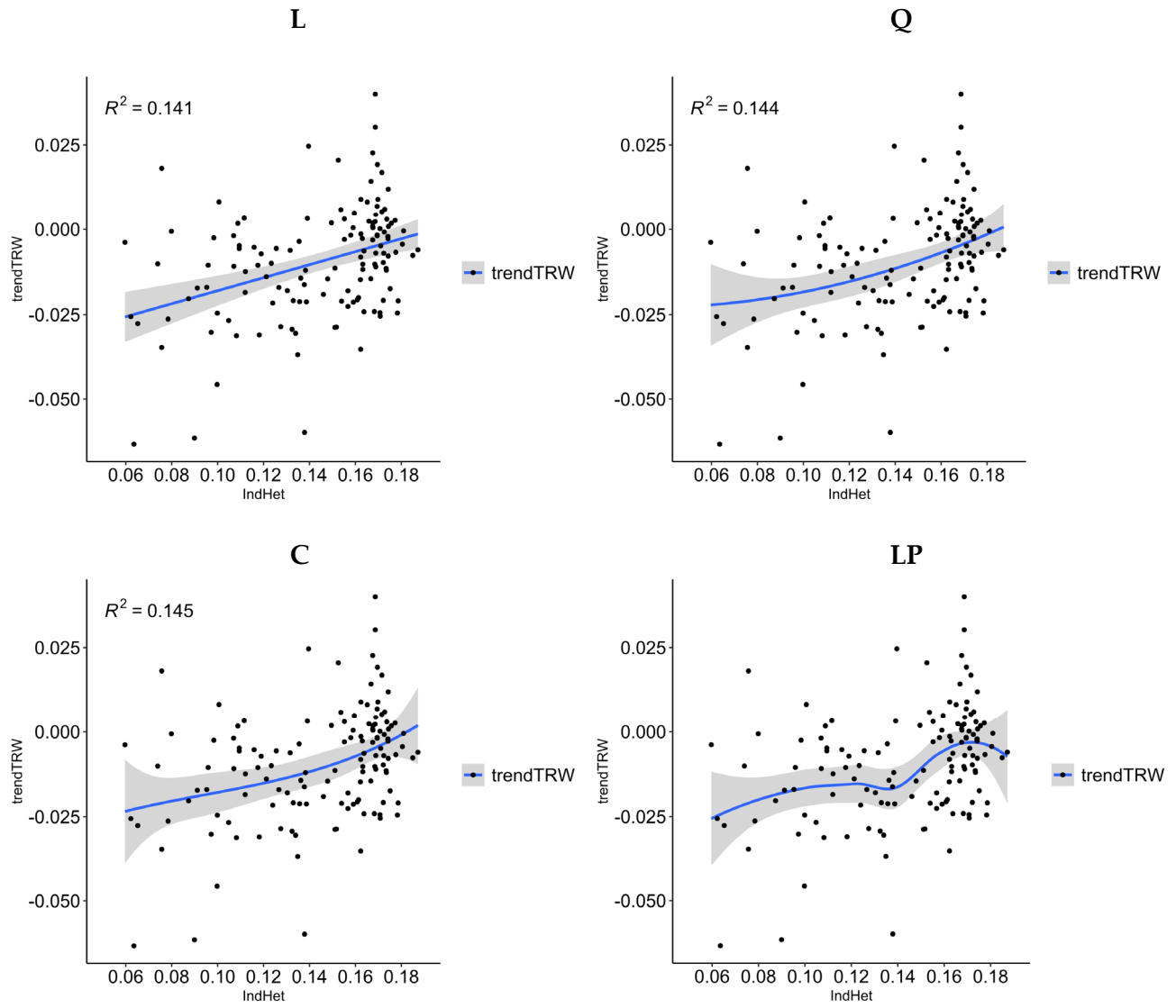
Dendrophenotype	<i>r</i>	<i>P</i>	<i>r_s</i>	<i>P</i>
Rs1	0.064	0.4918	-0.028	0.7615
Rs2	0.228*	0.0111	0.278*	0.0019
Rs3	0.074	0.4098	0.062	0.4898
Rs4	0.180*	0.0370	0.311*	0.0002
Rs5	0.142	0.1097	0.200	0.0237



Dendrophenotype	<i>r</i>	<i>P</i>	<i>rs</i>	<i>P</i>
RRs1	0.471*	<0.0001	0.316*	0.0005
RRs2	0.378*	<0.0001	0.353*	<0.0001
RRs3	0.405*	<0.0001	0.493*	<0.0001
RRs4	0.423*	<0.0001	0.401*	<0.0001
RRs5	0.216*	0.0144	0.258*	0.0033



Dendrophenotype	r	P	r_s	P
varTRW	-0.118	0.1701	-0.164	0.0560



Dendrophenotype	r	P	r_s	P
trendTRW	0.372*	<0.0001	0.371*	<0.0001

Figure S1. Dot plot graphs of individual heterozygosity (IndHet) and dendrophenotypes (Rt, Rc, Rs, RRs, varTRW, and trendTRW) for significant cases with the Pearson's (r) and Spearman's rank (r_s) correlation coefficients, regression coefficients (R^2) and trendlines based on linear (L), quadratic (Q), cubic (C) and local polynomial (LP) regression fitting. The gray area highlights the 95% confidence interval.