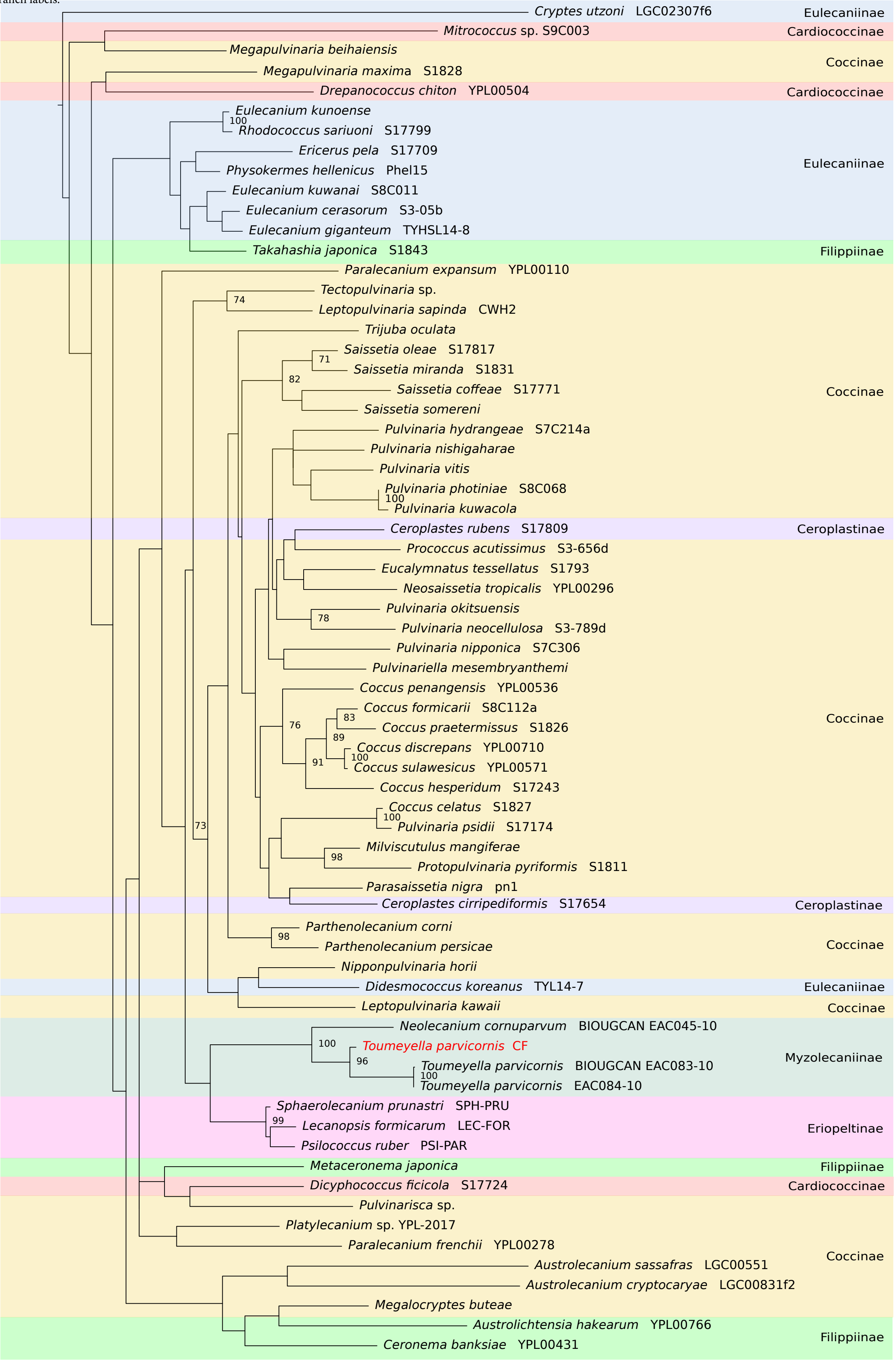


Figure S1: RAxML phylogenetic tree of the cytochrome oxidase subunit I (COI) among the Coccidae family. The colors indicate the morphological subfamilies: Eulecaniinae, Filippiinae, Coccinae, Car-diococcinae, Ceroplastinae, Eriopeltinae, and Myzolecaniinae, to which T. parvicornis belongs. In red is the Italian isolate of T. parvicornis. Bootstraps values are indicated in the branch labels.



0.2