

Article

Genetic Variation in *Quercus acutissima* Carruth., in Traditional Japanese Rural Forests and Agricultural Landscapes, Revealed by Chloroplast Microsatellite Markers

Yoko Saito ^{1,*}, Yoshiaki Tsuda ², Kentaro Uchiyama ³, Tomohide Fukuda ⁴, Yasuhiro Seto ⁵, Pan-Gi Kim ⁶, Hai-Long Shen ⁷ and Yuji Ide ¹

¹ Graduate School of Agricultural and Life Sciences, University of Tokyo, 1-1-1, Yayoi, Bunkyo, Tokyo 113-8657, Japan; ide@es.a.u-tokyo.ac.jp

² Sugadaira Research Station, Mountain Science Center, University of Tsukuba, 1278-294 Sugadairakogen, Ueda, Nagano 386-2204, Japan; tsuda.yoshiaki.ge@u.tsukuba.ac.jp

³ Department of Forest Molecular Genetics and Biotechnology, Forestry and Forest Products Research Institute, Matsunosato 1, Tsukuba, Ibaraki 305-8687, Japan; kruchiyama@affrc.go.jp

⁴ NTT DATA Intellink Corporation, Tsukishima 1-15-7, Chuo, Tokyo 104-0052, Japan; ckhut9343@gmail.com

⁵ Mynavi Corporation, Chiyoda, Tokyo 100-0003, Japan; seto.yasuhiro@mynavi.jp

⁶ School of Ecological and Environmental System, Kyungpook National University, Sangju 742-711, Korea; pgkim@knu.ac.kr

⁷ State Key Laboratory of Forest Genetics and Breeding, Northeast Forestry University, Hexing Road 26, Harbin 150040, China; shenhl-cf@nefu.edu.cn

* Correspondence: yoko@es.a.u-tokyo.ac.jp; Tel.: +81-3-5841-8259

Received: 23 August 2017; Accepted: 13 November 2017; Published: 17 November 2017

Abstract: *Quercus acutissima* Carruth. is an economically important species that has long been cultivated in Japan, so is a valuable subject for investigating the impact of human activities on genetic variation in trees. In total, 2152 samples from 18 naturally regenerated populations and 28 planted populations in Japan and 13 populations from the northeastern part of Eurasia, near Japan, were analyzed using six maternally inherited chloroplast (cpDNA) simple sequence repeat (SSR) markers. Although 23 haplotypes were detected in total, both the Japanese natural and artificial populations exhibited much lower genetic diversity than the continental populations. The level of genetic differentiation among natural populations in Japan was also much lower ($G'_{ST} = 0.261$) than that on the continent ($G'_{ST} = 0.856$). These results suggest that human activities, such as historical seed transfer, have reduced genetic diversity within and among populations and resulted in a homogeneous genetic structure in Japan. The genetic characteristics of natural and artificial populations of *Quercus acutissima* in Japan are almost the same and it is likely that most of the natural populations are thought to have originated from individuals that escaped from plantations.

Keywords: genetic structure; human impact; seed transportation; artificial forest

1. Introduction

Genetic diversity and genetic structure reflect the evolutionary process, including aspects such as colonization history and adaptation to the environment over long periods. Ecological characteristics, such as the mating system, seed dispersal and hybridization with related species, are also reflected in the genetic variation of tree species. However, historical human activities, such as the transfer of seeds and saplings, breeding, domestication and environmental impacts may also be reflected in the genetic structure of tree species. Relatively few studies have examined tree species strongly affected by

human activities over a long period [1–5]. Appropriate and sustainable use and management of forest systems, however, requires an understanding of the effects of human activities on genetic structure and population demography. For example, olive (*Olea europaea* L.) and cork oak (*Quercus suber* L.) are species that were considered to have been greatly influenced by human beings in Europe. Besnard et al. [6] reported five clades in a chlorotype consensus phylogram of olive populations in Africa and the Mediterranean, with each located in a specific geographic zone. However, within the Mediterranean area, the chlorotype originated in the east and had spread west, indicating seed transportation by humans. On the other hand, cork oak retains clear phylogeographic structure in the western Mediterranean and much less human impact than expected was detected [7]. This may be because cork oak has approximately the same distribution today as it did prior to the Neolithic [7] and seed transportation by humans has been rare. These studies suggest that the relationship between historical human activities and genetic structure of valuable tree species is complicated and their pattern is not always as expected.

Molecular markers are very useful tools to clarify the genetic structure patterns exhibited by tree species. Among the many molecular markers available, chloroplast DNA (cpDNA) is particularly useful for determining colonization routes, because (i) it does not recombine, therefore haplotypes remain mostly unchanged when passed to the next generation; and (ii) in angiosperms it is generally transmitted through seed only [8–10] because of its maternal inherited mode, so colonization patterns which derive from seed dispersal are not obscured by pollen flow [11]. Thus, levels of among-population genetic differentiation are expected to be much higher for cpDNA markers than for nuclear DNA markers [12]. However, detecting useful polymorphisms at the population level is often difficult because of the low level of substitutions in the chloroplast genome; chloroplast microsatellites represent potentially useful markers to circumvent this problem and, to date, studies have demonstrated high levels of inter- and intra-specific variability [7,13–15]. There are many studies which employed chloroplast microsatellites, so called cpSSR markers, to clarify the phylogeography of oak species widely in the world (e.g., [16–18]).

Quercus acutissima Carruth., *Lepidobalanus* Sect. *Cerris*, is one of the most economically and ecologically important deciduous tree species growing in Satoyama, a traditional Japanese rural forest and agricultural landscape. It is an anemophilous species and its seeds are dispersed by gravity and animals such as rodents [19]. This species is found in the warm-temperate zone from East Asia to the Himalayas [20], but the range is considered to be heavily influenced by human activities because of its long cultivation history, like that of European chestnut, *Castanea sativa* Mill. The origin of Japanese populations of *Q. acutissima* is unknown. Unlike other Japanese oak species, *Q. acutissima* is seldom observed in mountainous areas, but is found in and around human settlements in Japan. Kurata [21] questioned whether *Q. acutissima* is native to Japan. Fukamachi et al. [22] also suggested that *Q. acutissima* is an introduction from China, because it is less common than the native oaks *Quercus serrata* Murray and *Quercus crispula* Blume in woodlands, and it is usually pollarded, whereas the native oaks are coppiced in the Satoyama landscape. Although there is no available pollen fossil data specific to *Q. acutissima* in Japan, during the last glacial, warm-temperate evergreen broadleaved forest, in which *Q. acutissima* grows, was restricted to the Paleo-Yaku Peninsula, around the southern island of Kyushu, based upon pollen and plant macrofossil data [23]. Moreover, a recent study based on ecological niche model by Zhang et al. [24] revealed that *Q. acutissima* could not distribute in the main archipelago of Japan during the last glacial maximum (ca. 21,000 years BP). About 6000 years ago, when the climate was warmest, the evergreen forest extended to Kanto area, central Japan [25]. The plant residue of *Q. acutissima* or *Quercus variabilis* Blume (*Lepidobalanus* Sect. *Cerris*) has been found in the Japanese archipelago as fossil wood from the Jomon era, from approximately 16,500 to 3000 years ago [26]. The timber was used as a building material [26] and the seeds as food [27]. In recent years, especially since the 1960s, the demand for fresh Shiitake mushrooms has grown and *Q. acutissima* logs for cultivation have become more scarce, so the species has been planted widely in Japan [28].

In Japan, there are 15 native *Quercus* species [20] and they are widely distributed from south to north and from the coasts to the mountains. They are familiar to forest researchers and many ecological studies have been conducted on them, especially in the temperate zone (e.g., [29,30]). However, only a few reports have examined the phylogeographic characteristics of oak trees (e.g., [31–33]) and the genetic variation in *Q. acutissima* in Japan has not been investigated.

The aims of the study reported here were (1) to clarify the genetic diversity and structure of *Q. acutissima* using chloroplast microsatellite; (2) to detect evidence of the impact of human activity on genetic diversity and structure; and (3) to compare genetic variation in naturally regenerated and planted populations in Japan and continental populations in eastern Eurasia (South Korea and Northeast China).

2. Materials and Methods

2.1. Sampling of Plant Populations

Leaves of *Q. acutissima* of adult individuals were collected from 18 populations that had regenerated naturally along rivers (except for two populations, GO and SM) and two Gene Conservation Forests (Japanese natural populations) and 28 planted populations in Japan, covering the species' entire distribution (Table 1, Figure 1). Naturally regenerated populations were seldom found except for in sunny river valleys; they were small populations containing several to several dozen individuals. We selected the individuals separated by at least 10 m from the next tree in river side areas and 30 m in mountain areas. Every planted population was a subcompartment of a private forest without information of seed source and all of them were older than 40 years according to the forest registers. In order to compare Japanese populations with natural continental populations in mountainous areas or hillside, thirteen populations from northeastern Eurasia (referred to as continental populations, hereafter) (Table 1, Figure 1) were sampled, where possible, separated by at least 30 m from the next tree. In total, 59 populations, consisting of a total of 2152 individuals were sampled. Leaves were dried with silica gel in plastic bags before DNA extraction.

2.2. Chloroplast SSR Analysis

Total DNA was extracted from dried material using the modified CTAB method [34]. Each extract was then amplified by polymerase chain reaction (PCR) using a multiplex PCR Kit (Qiagen, Hilden, German) with six maternally inherited cpSSR primer pairs— μ cd4, μ cd5, μ dt1, μ dt3, μ dt4, and μ kk4 [35]—developed for *Quercus*. All primers were included in the same reaction mixture. Each 5.0- μ L amplification reaction mixture contained 2.5 μ L of MasterMix solution (Qiagen, Hilden, German), 1.5 μ L of RNase-free water, 0.5 μ L of the primer mix solution (including the six pairs of primers, each at 0.5 pmol/ μ L), and 0.5 μ L of the extracted DNA (5–100 μ g/mL). The reaction program was as follows: 15 min denaturation at 95 °C followed by 25 cycles of 30 s, denaturation at 94 °C, annealing for 90 s at 48 °C, and extension for 60 s at 72 °C, followed by a final extension at 60 °C for 30 min. CpSSR PCR products were analyzed using an ABI3100 Genetic Analyser (Thermo Fisher Scientific Inc., Waltham, MA, USA), and the sizes of the amplified alleles were estimated using GeneMapper software (Thermo Fisher Scientific Inc., Waltham, MA, USA).

2.3. Genetic Data Analysis

Haplotypes were determined based on the fragment length of the six cpSSR markers. The level of polymorphism within populations was estimated using haplotypic diversity based on unordered (*hs*) or ordered haplotypes (*vs*) following Pons and Petit [36], taking the number of differences in the repeats of cpSSR haplotypes into account. In the overall sample, total haplotypic diversity statistics based on unordered alleles which assumes that new allele is generated randomly, and ordered alleles assuming a stepwise mutation model, for the mutations of the SSR (*ht* and *vt*, respectively) [37], were also calculated following Pons and Petit [36]. Haplotypic richness was calculated using RAREFAC [38] software.

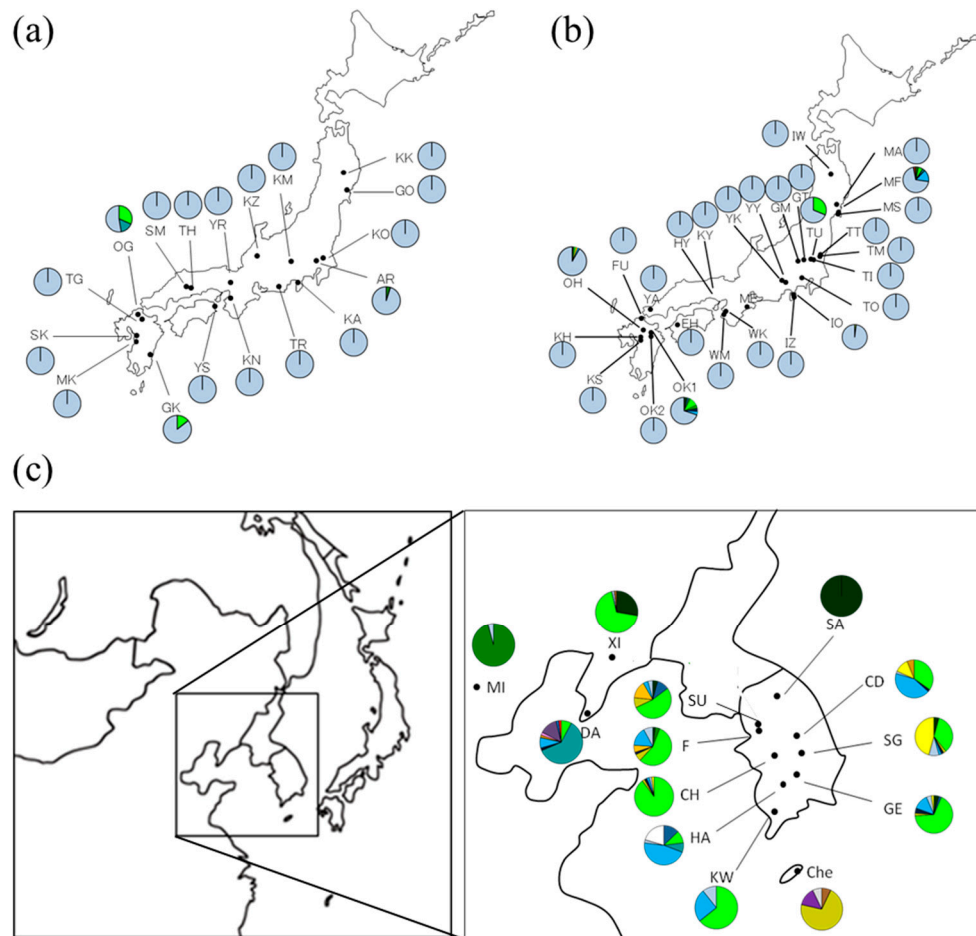


Figure 1. Chloroplast haplotype distribution of *Quercus acutissima* Carruth. for (a) 18 natural populations in Japan, (b) 28 artificial populations in Japan and (c) 13 continental populations. The color of haplotype is same as Figure 2.

Population differentiation at chloroplast loci was then evaluated in terms of unordered alleles (G_{ST}) [39] and ordered alleles, which assumes a stepwise mutation model of the SSR (R_{ST} [40]). Moreover, N_{ST} [36] was also employed to evaluate population differentiation. If a bias in homoplasy or multistep mutation of the SSR is large enough, it is better to employ N_{ST} , which considers the number of shared cpSSR loci with an identical allele as genetic distance among haplotypes. Following Pons and Petit [36], 1000 random haplotype permutations among populations were used to test whether the R_{ST} and N_{ST} values were significantly higher than the G_{ST} values. These calculations and tests were conducted using software PERMUT/CpSSR ver 2.0 [36]. Because G_{ST} , the index of the genetic differentiation values, is dependent on the level of genetic variation, standardized values of G_{ST} and G'_{ST} [41], which can range from 0 (no differentiation) to 1 (complete differentiation) regardless of polymorphism of examined markers, were also calculated. To determine phylogenetic relationships among the chloroplast DNA haplotypes, a Neighbor-net [42] was constructed with the software SplitsTree4 [43]. To clarify the genetic relationships between populations, a neighbor joining tree was constructed based on the genetic distance of $(\delta\mu)^2$ [44] using Populations ver.1.2.30 [45] and visualized on a hypometric map using Mapmaker and GenGIS2 software [46].

Table 1. Populations and sample size of *Quercus acutissima* Carruth. forest and detected haplotypes.

Region	Forest Type	Code	Latitude (N)	Longitude (E)	Sample Size	Detected Haplotype		
	Natural	KK	39°16'	141°07'	53	20		
		GO	38°45'	141°23'	16	20		
		ARD	36°07'	139°19'	41	6, 20		
		KO	36°02'	140°01'	32	20		
		KM	35°39'	138°30'	13	20		
		KA	35°10'	138°90'	4	20		
		TR	34°48'	137°49'	14	20		
		KN	34°14'	135°09'	15	20		
		YR	35°17'	135°19'	13	20		
		KZ	35°54'	136°38'	15	20		
		YS	34°06'	134°30'	13	20		
		TH	34°52'	133°33'	6	20		
		SM	34°53'	133°25'	12	20		
		OG	33°35'	130°39'	19	7, 9, 20		
		TG	33°20'	130°50'	8	20		
		SK	32°46'	130°36'	14	20		
		MK	32°42'	130°36'	13	20		
		GK	32°39'	131°25'	21	7, 20		
		Japan	Artificial	IW	39°46'	141°08'	37	20
				MF	38°20'	140°59'	33	6, 7, 19, 20, 38
				MA	38°38'	140°59'	49	20
MS	38°21'			141°00'	22	20		
TT	36°31'			140°13'	46	20		
TM	36°30'			140°12'	46	20		
TI	36°29'			139°59'	48	20		
TU	36°29'			139°55'	48	7, 20		
GT	36°17'			139°04'	40	20		
GM	36°16'			138°45'	48	20		
TO	35°38'			139°18'	50	20		
IZ	34°53'			139°06'	40	20		
IO	35°01'			138°59'	50	4, 20		
YY	35°30'			138°28'	50	20		
YK	35°28'			138°30'	50	20		
ME	34°21'			136°29'	50	20		
KY	34°57'			135°32'	50	20		
HY	34°55'			135°27'	46	20		
WK	34°11'			135°17'	50	20		
WM	34°02'			135°13'	31	20		
YA	34°16'			131°18'	50	20		
EH	33°37'	132°49'	50	20				
FU	33°47'	130°53'	42	20				
OH	33°19'	130°57'	48	3, 7, 16, 19, 20				
OK1	33°11'	131°16'	50	3, 5, 7, 10, 15, 20				
OK2	33°08'	131°16'	50	20				
KS	33°02'	130°50'	48	20				
KH	33°04'	130°53'	47	20				
Continent	Natural	SA	37°36'	128°01'	41	3		
		SU	37°19'	127°01'	47	3, 5, 7, 12, 16, 19, 20		
		F	37°12'	126°59'	50	3, 6, 7, 12, 15, 16, 19, 20		
		CD	36°50'	127°57'	49	7, 15, 19, 20, 21, 26		
		CH	36°24'	127°15'	49	7, 12, 15, 19, 20, 21		
		SG	36°22'	128°08'	46	3, 7, 12, 15, 19, 20, 21		
		GE	35°44'	127°47'	46	3, 5, 7, 12, 15, 19, 20, 21		
		HA	35°38'	127°17'	39	5, 7, 9, 19, 20, 32		
		KW	35°09'	126°56'	28	7, 19, 20		
		Che	33°31'	126°32'	14	1, 26, 39, 41		
		XI	40°23'	123°18'	54	3, 7, 20, 26		
		MI	39°55'	116°24'	47	6, 20		
		DA	38°55'	121°21'	51	7, 9, 15, 19, 20, 26, 34, 36, 37, 40		

3. Results

3.1. Haplotypes

The six chloroplast microsatellite primers assayed for 2152 individuals in 59 populations (Table 1) gave 22 different alleles: $\mu\text{cd}4$, three alleles; $\mu\text{cd}5$, two alleles; $\mu\text{dt}1$, four alleles; $\mu\text{dt}3$, five alleles; $\mu\text{dt}4$, five alleles; and $\mu\text{kk}4$, three alleles. Thus, 23 haplotypes were identified (Table 2) and the haplotypes were divided into three groups on the Neighbor-net (Figure 2). Seven, eight and eight

haplotypes belonged to Group I, II and III, respectively. In the total sample, haplotype 20 of group III and haplotype 7 of group I were the most common, with frequencies of 72.2% and 11.9%, respectively. Haplotype 20 was dominant in Japan and haplotype 7 was dominant on the continent (Table 2, Figure 1). In total, there were four haplotypes in the Japanese natural populations, twelve in the plantation populations, and twenty in the continental populations (Table 2). The number of haplotypes unique to each population group was three (haplotypes 4, 10, 38) in the Japanese plantations and ten (haplotypes 1, 12, 21, 32, 34, 36, 37, 39, 40, 41) in the continental populations. There were no haplotypes that only occurred in Japanese natural populations.

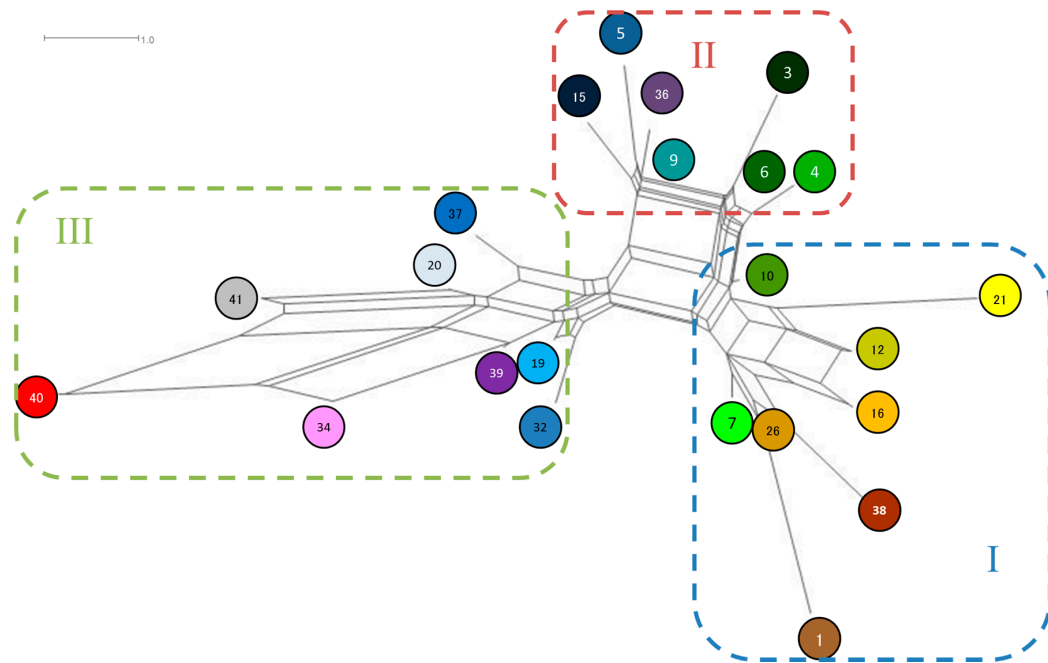


Figure 2. A Neighbor-net of 23 Chloroplast haplotypes for *Quercus acutissima*. Haplotypes of Group I were distributed mainly in Korea, haplotypes of Group II were in China and northern Korea and haplotypes of Group III were dominant in Japan.

Table 2. The 23 chloroplast haplotypes revealed by the six simple sequence repeat (SSR) markers and the fragment length of each marker, and frequency of each haplotype.

Haplotype	Maker						Haplotype Frequency *			
	μ cd4 (VIC)	μ cd5 (FAM)	μ dt1 (PET)	μ dt3 (FAM)	μ dt4 (PET)	μ kk4 (NED)	Japan		Continent	Total
							Natural	Artificial		
20	101	81	90	129	139	115	0.957	0.965	0.037	0.7217
7	101	81	90	128	136	115	0.028	0.018	0.399	0.1190
19	101	81	90	129	138	115	-	0.006	0.121	0.0353
3	101	81	90	126	137	115	-	0.002	0.112	0.0307
6	101	81	90	127	137	115	0.006	0.002	0.084	0.0237
9	101	81	90	127	138	115	0.009	0.001	0.061	0.0177
21	102	82	91	128	137	115	-	-	0.052	0.0135
26	101	81	89	128	136	115	-	-	0.027	0.0070
5	100	81	90	127	138	115	-	0.001	0.020	0.0056
16	102	81	90	129	136	115	-	0.001	0.018	0.0051
12	102	81	90	128	136	115	-	-	0.018	0.0046
15	102	81	90	127	138	115	-	0.002	0.012	0.0042
32	102	81	90	129	138	115	-	-	0.014	0.0037
36	101	81	89	127	138	115	-	-	0.012	0.0033
10	101	81	90	128	137	115	-	0.002	-	0.0009
39	101	81	89	129	138	115	-	-	0.004	0.0009
4	101	81	90	127	136	115	-	0.001	-	0.0005
38	101	81	89	129	135	115	-	0.001	-	0.0005
1	101	81	89	128	136	113	-	-	0.002	0.0005
34	101	82	88	129	138	115	-	-	0.002	0.0005
37	101	81	89	128	139	115	-	-	0.002	0.0005
40	101	82	88	130	139	116	-	-	0.002	0.0005
41	101	81	90	130	139	116	-	-	0.002	0.0005
Total number of allels	3	2	4	5	5	3				

VIC, FAM, PET, NED, Fluorescent Dye; *, The haplotype frequencies were rounding off four decimal place. The total of frequencies of raw data is 1.000 in each area.; -, no detection.

3.2. Geographical Distribution of Haplotypes of *Q. acutissima*

The relationship between geographical distribution and genetic variation is shown in Figure 1 and Tables 1 and 2. Haplotype 20 was found at high frequencies in all natural and artificial plantations in Japan and was also present at low frequencies in 11 of 13 continental populations, at most 10.7% occurrences in KW and 8.7% in SG in South Korea. On the other hand, 87.5% of the occurrences of Haplotype 7 were in 10 of 13 continental populations and only six of the 46 Japanese populations contained this haplotype. Ten of the 23 haplotypes were unique to a single population. On the continent, haplotypes 1, 39 and 41 were only found in Che; haplotypes 34, 36 and 40 were only found in DA; and haplotype 32 was only found in HA. In Japan, haplotype 38 was only found in MF, haplotype 4 only in IO and haplotype 10 only in the OK1 plantation. In Japan, 11 haplotypes, i.e., all except haplotype 20, were found at low frequencies and they were concentrated in eight of the 46 populations. Although no phylogeographic structure was detected because of the fixation of haplotype 20 in Japan, haplotypes of Group II were distributed mainly in China and northern Korea and haplotypes of Group III were dominant only in HA on the continent (Figure 3).

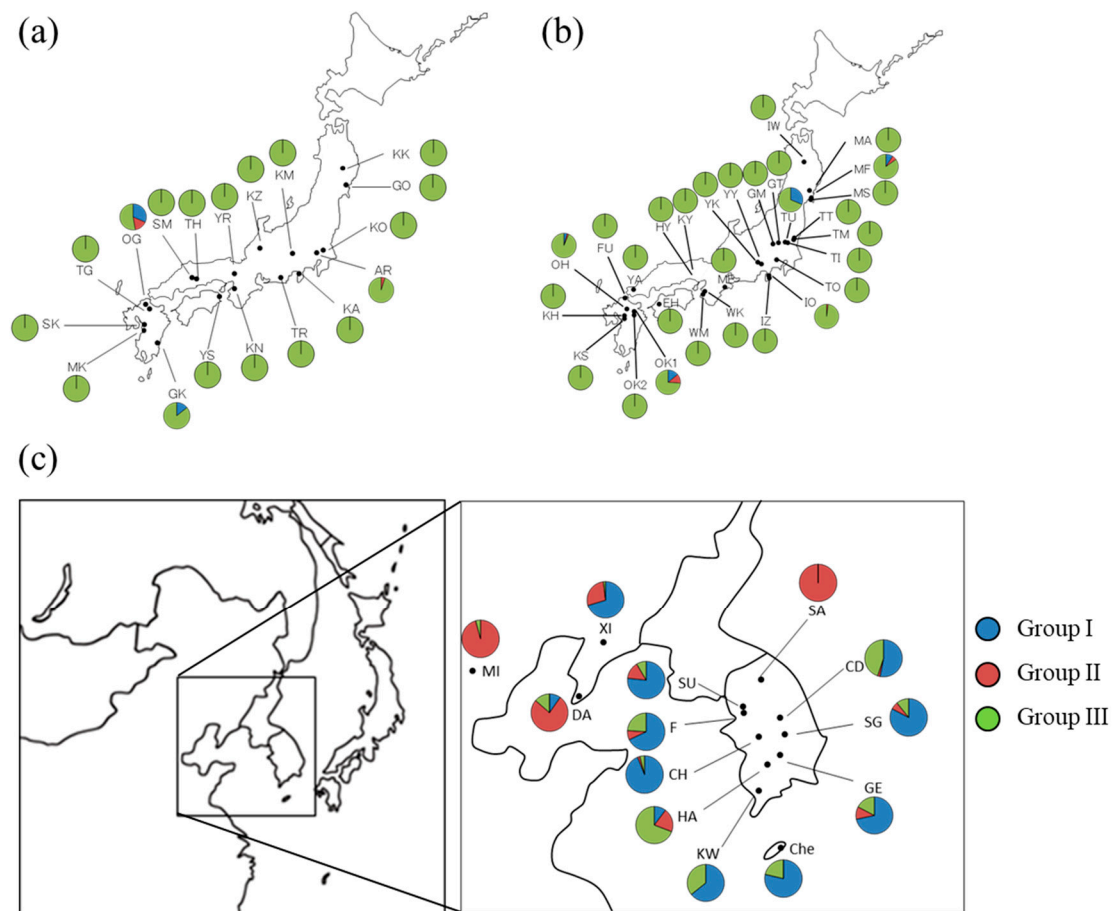


Figure 3. Three chloroplast haplotype group distribution of *Q. acutissima* for (a) 18 natural populations in Japan; (b) 28 artificial populations in Japan and (c) 13 continental populations.

3.3. Genetic Diversity within Populations and Differentiation between Populations of *Q. acutissima*

Most populations, both natural and artificial, in Japan were monomorphic, containing only haplotype 20; in contrast, on the continent, all populations except for SA were polymorphic. Within population variation is shown in Table 3. All calculated parameters were higher on the continent (h_s : 0.488; v_s : 0.482) than in Japan (h_s : 0.055, 0.059; v_s : 0.053, 0.057 in natural and artificial populations, respectively). In Japan, the values were almost the same in the natural and artificial populations. Although the number of haplotypes in artificial populations is more than in natural populations, most of the artificial populations were also dominated haplotype 20 (Table 1). Only five artificial populations had multiple haplotypes (Figure 1). The level of population subdivision was relatively low, for the natural and artificial populations in Japan, and the continental populations, respectively. These values were low for both types of population in Japan. R_{ST} was not significantly larger than G_{ST} for any dataset. Only in the continental populations was high population differentiation ($G'_{ST} = 0.856$) shown, and N_{ST} was significantly higher than G_{ST} , suggesting phylogeographic structure.

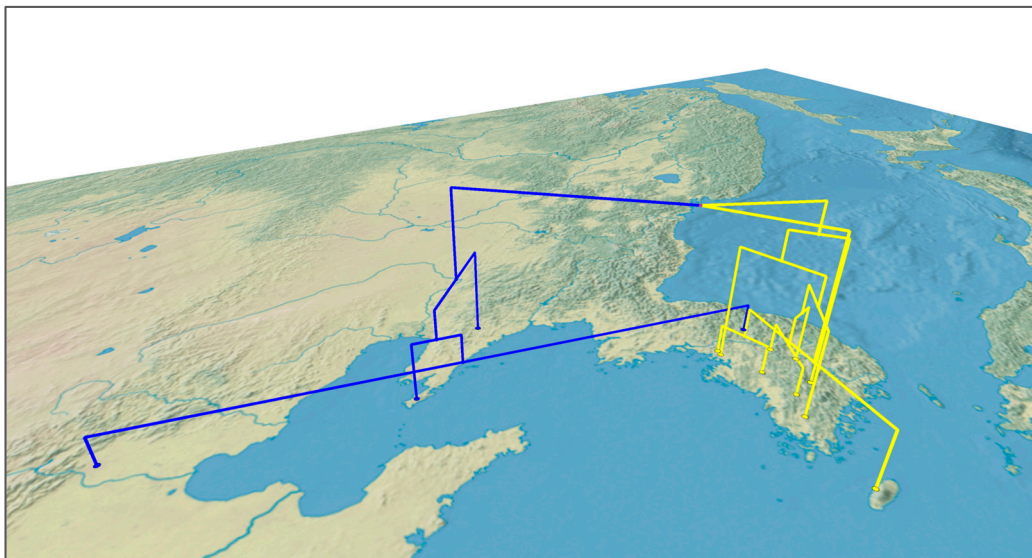
Table 3. Genetic diversity and genetic differentiation in the three population groups of *Quercus acutissima* Carruth.: Natural and artificial populations in Japan plus natural continental populations.

Region	Forest Type	No. of Populations	Sample Size	<i>As</i>	<i>hs</i>	<i>vs</i>	<i>ht</i>	<i>vt</i>	G_{ST}	G'_{ST}	R_{ST}	N_{ST}
Japan	Natural	18	322	1.111 (0.076)	0.055 (0.037)	0.053 (0.037)	0.073 (0.051)	0.073 (0.050)	0.246	0.261	0.238	0.238
Japan	Artificial	28	1269	1.122 (0.061)	0.059 (0.029)	0.057 (0.028)	0.072 (0.035)	0.072 (0.035)	0.180	0.191	0.201	0.179
Continent	Natural	13	561	2.088 (0.159)	0.488 (0.067)	0.482 (0.063)	0.843 (0.054)	0.844 (0.099)	0.421	0.856	0.429	0.480 *

As, haplotypic richness; *hs*, unordered haplotypic diversity; *vs*, ordered haplotypic diversity; *ht*, unordered total haplotypic diversity; *vt*, ordered total haplotypic diversity; G_{ST} , unordered population differentiation index; G'_{ST} , standardized value of G_{ST} ; R_{ST} , ordered alleles based population differentiation index; N_{ST} , ordered loci based population differentiation index; standard errors in parentheses; * N_{ST} is significantly larger than G_{ST} ($p < 0.05$).

3.4. Genetic Relationship between Populations of *Q. acutissima*

A Neighbor-Joining tree for 59 populations was constructed based on the genetic distance $(\delta\mu)^2$ [44] (Appendix A). Two clades were recognized: one representing Japanese natural and artificial populations and the other continental populations. This suggests that Japanese populations and continental populations are genetically differentiated. Only OG, a Japanese natural population, belonged to the continental clade. No phylogeographic structure was apparent in the Japanese clade. However, the other clade had two subclades, one consisting of populations from northern Korea and China and the other of South Korean populations (Figure 4). Thus genetic structure was shown on the edge of the Eurasian continent.

**Figure 4.** Neighbour-joining tree for *Quercus acutissima* Carruth. continental populations only, based on $(\delta\mu)^2$ genetic distance.

4. Discussion

In total, 59 *Q. acutissima* populations from Japan and Eurasia (South Korea and Northeast China), were analyzed using cpSSR markers and 23 haplotypes were detected in total and the markers used were highly polymorphic.

4.1. Genetic Characteristics of *Q. acutissima* Natural Populations in Northeast Asia

Genetic diversity was much lower in the Japanese populations than in the continental ones. Most populations were fixed for haplotype 20 alone, and genetic diversity with respect to chloroplast DNA was lacking in Japan despite the polymorphic markers. In tree species, the same haplotype or genetically related haplotypes are sometimes located close to each other geographically (e.g., *Betula maximowicziana* Regel [47], *Fraxinus angustifolia* Vahl. [48]); this is referred to as phylogeographic structure. Among the oak species present on the Japanese archipelago, *Q. crispata*, *Q. serrata*, *Quercus dentata* Thunb. and *Quercus aliena* Blume, all of them are autochthonous in Japan, do exhibit clear phylogeographic structure reflecting the presence of a refugium during the last glacial maximum and subsequent migration based on chloroplast DNA variation [31,32]. In this study, there was no phylogeographic structure identified for *Q. acutissima* in Japan. Thus the haplotype distribution of *Q. acutissima* is completely different from that found in these four native oak species. *Q. variabilis* in Japan, related species of *Q. acutissima*, also fixed for haplotype 20 as same as *Q. acutissima* [49]. *Q. variabilis* is inferred that the distribution was influenced by human activity as same as *Q. acutissima*. It must be chloroplast capture but it could not be determined which species incited the capture. Although it is not known when the introgression happened, it must have happened before they expanded over the Japanese archipelago. The haplotype distribution patterns of *C. sativa* [2] and *Prunus avium* L. [8] in Europe, which have both been influenced greatly by human activities, are similar to *Q. acutissima* in Japan, with one major haplotype covering almost all the distribution range. Alternatively, the absence of phylogeographic structure throughout Japan could be attributed to the monomorphism of cpDNA and long distance gene flow with seed among populations [5].

Japanese horse chestnut (*Aesculus turbinata* Blume), which is also a tree species used by human beings, has several haplotypes on the Japanese archipelago but one of these has a wide distribution extending circa 900 km [50]. The authors of that study discuss the discrepancy between a distribution range predicted based on migration capability and the actual distribution range, which is known as Reid's Paradox [51], and note that rare long-distance seed-dispersal events could account for more rapid colonization [50]. Similarly, in the case of *Q. acutissima*, haplotype 20 is present in all populations extending across a range of almost 1400 km. Acorns of *Q. acutissima* are transported by rodents and the maximum reported distance is 38.5 m [19]. The youngest reproductive age of the species is four years [52]. Based on these figures, if refugia of *Q. acutissima* during the last glacial maximum (LGM) existed around the southern part of Japan (e.g., Paleo-Yaku Peninsula) as suggested by the paleoecological study [23], more than 300,000 years would be needed to cover the entire current distribution range. However, a recent study clearly suggested that *Q. acutissima* did not distribute in the main archipelago of Japan during the LGM [24]. Thus, it is difficult to explain the modern distribution of *Q. acutissima* only by natural population colonization although natural rare long-distance seed-dispersal events could account for rapid colonization. Indeed, haplotype 7, common on the continent, was also found in six Japanese populations. Although this may suggest the long distance dispersal, it would be more likely that this continental haplotype was introduced to Japan via past human activities, as discussed below.

4.2. Genetic Structure and Population Differentiation

Since most of the *Q. acutissima* populations in Japan were fixed for one haplotype, this tree species experienced a severe bottleneck when *Q. acutissima* expanded its distribution to the Japanese archipelago either naturally or artificially. On the other hand, some populations, mainly on Kyushu Island, have multiple haplotypes and these populations must have experienced several introductions of seeds from the continent. However, these seeds did not spread to other regions of Japan, as happened with haplotype 20. It is possible that these haplotypes arrived after haplotype 20 and after it had spread across the Japanese archipelago. There are plantations which were made by Korean seed sources in 1970s in Kyushu Island for the high demand of logs of *Q. acutissima* for Shiitake cultivation [53]. The haplotypes, except for haplotype 20, might have come over to Japan quite recently. Furthermore,

there may not have been enough time for mutations to accumulate after haplotype 20 was spread over the archipelago.

The level of population differentiation was very low for *Q. acutissima*, particularly in Japan. Aguinagalde et al. [54] reviewed genetic structure associated with maternally inherited markers in European trees and shrubs, and the average for three species that are cached by animals (*Corylus avellana* L., *Fagus sylvatica* L., *Quercus robur* L.) was $G_{ST} = 0.83 \pm 0.05$ SD (standard deviation) and for 15 wind dispersed species was $G_{ST} = 0.56 \pm 0.07$ SD. In contrast, Duminil et al. [55] found that species with gravity-dispersed seeds had significantly higher G_{ST} values based on maternal DNA, although no significant relationships were identified between G_{ST} and the other modes of seed dispersal. The genetic differentiation revealed by maternal DNA markers for native tree species in Japan is summarized in Table 4, and there does not appear to be any link between seed dispersal mode and G_{ST} value, as Duminil et al. [55] described. Most species have values higher than 0.9 for G_{ST} and 0.97 for G'_{ST} and are highly differentiated because of restricted gene flow by seed. The values for Japanese natural populations of *Q. acutissima* ($G_{ST} = 0.251$, $G'_{ST} = 0.261$) are much lower than those for other Japanese species. Even *Q. gilva*, which was heavily influenced by human activity in Japan, because of its edible acorns and valuable timber, showed much higher differentiation ($G'_{ST} = 0.754$) [56] than this study. In general, seed or seedling transfer by humans reduces genetic differentiation and degrades genetic structure in the same way as high gene flow. *C. sativa* ($G_{ST} = 0.43$) [2] and *P. avium* ($G_{ST} = 0.29$) [5] also exhibit low genetic differentiation (Table 4). Both of these species are used by humans and their distributions have been influenced accordingly. The value of G_{ST} for *Q. robur* is much lower in roadside plantations than natural populations [4]. As described above, *Q. variabilis*, heavily influenced by human activity as same as *Q. acutissima*, has no cpDNA variation in Japan [49]. These support the suggestion that some non-natural factor influenced the current genetic structure of *Q. acutissima*, possibly human transport of seeds and plants over a long period. Moreover, a recent study by Zhang et al. [24] reconstructed the past distribution of *Q. acutissima* and they revealed that there was little distribution of the species during the LGM in the current land area of Japan. Thus, it is reasonable to consider that *Q. acutissima* started to distribute after the LGM in Japan. This also supports that this species was possibly transported through human impact.

Table 4. Genetic differentiation of organelle DNA of five Japanese tree species, which are little used by humans and two European tree species, which are intensively used.

Species	Dispersal Type	No. of Populations	No. of Individuals	DNA	G_{ST}	G'_{ST}	Reference
<i>Quercus acutissima</i>	G and A	18	322	C	0.246	0.261	This study
<i>Quercus gilva</i>	G and A	25	135	C	0.668	0.754	[55]
<i>Quercus mongolica</i>	G and A	33	501	C	0.857	0.979 *	[32]
<i>Fagus crenata</i>	G and A	17	409	M	0.963	0.996 *	[57]
<i>Fagus crenata</i>	G and A	21	351	C	0.95	-	[58]
<i>Betula maximowicziana</i>	W	25	400	C	0.950	0.977	[47]
<i>Picea jezoensis</i>	W	33	264	M	0.901	0.974 *	[59]
<i>Prunus avium</i>	G and A	23	211	C	0.29	0.44 *	[5]
<i>Castanea sativa</i>	G and A	38	181	C	0.43	0.70 *	[2]

G, gravity; A, animal; W, wind; C, Chloroplast; M, Mitochondria; *, G'_{ST} is calculated in this paper.

Although the continental populations of *Q. acutissima* exhibited relatively low differentiation in G_{ST} (0.421), the standardized G'_{ST} value was high (0.856). Thus, the much lower value of G_{ST} on the continent was due to high polymorphism of the examined cpSSRs, as Hedrick [41] pointed out. Moreover, $G_{ST}-N_{ST}$ tests suggested the existence of phylogeographic structure on the continent and indeed the NJ tree supports this finding, showing two groups. Thus, although human impact might affect the genetic structure of *Q. acutissima* on the continent, it is likely to have been much less than the influence on Japan populations.

5. Conclusions

Based on our results, it is probable that the genetic structure of *Q. acutissima* is heavily influenced by human activities in Japan and it is difficult to reconstruct the past introduction routes to Japan from the continent because of complicated multiple introductions including secondary transportation within Japan. The genetic characteristics of natural and non-natural populations in Japan are almost the same and it is likely that the natural populations originated from individuals that escaped from plantations. Thus, at least considering cpDNA variation, modern seed transfer may not affect the current genetic structure of this species, except for some populations on Kyusyu Island. A future study not only based on bi-parental nuclear DNA genetic variation but also on human geographic study of usage of this tree species, would provide more information on past demographic history of this species in Japan in order to propose a management program for these genetic resources.

Acknowledgments: This research was supported by a grant for Research on Genetic Guidelines for Restoration Programs using Genetic Diversity Information (FY2005–2009) from the Ministry of Environment, Japan. We thank Leanne Kay Faulks for English editing.

Author Contributions: Y. Saito conceived and designed the research program, conducted genetic experiments, analyzed the data and wrote the manuscript, Y. Tsuda analyzed the data and wrote the manuscript, K. Uchiyama contributed genetic experiments and data analysis, T. Fukuda contributed samplings and experiments of Japanese natural populations, Y. Seto contributed samplings and experiments of Japanese artificial populations, P. Kim contributed samplings of Korean populations, H. Shen contributed samplings of Chinese populations, Y. Ide conceived and designed the research program.

Conflicts of Interest: The authors declare no conflict of interest.

Appendix A

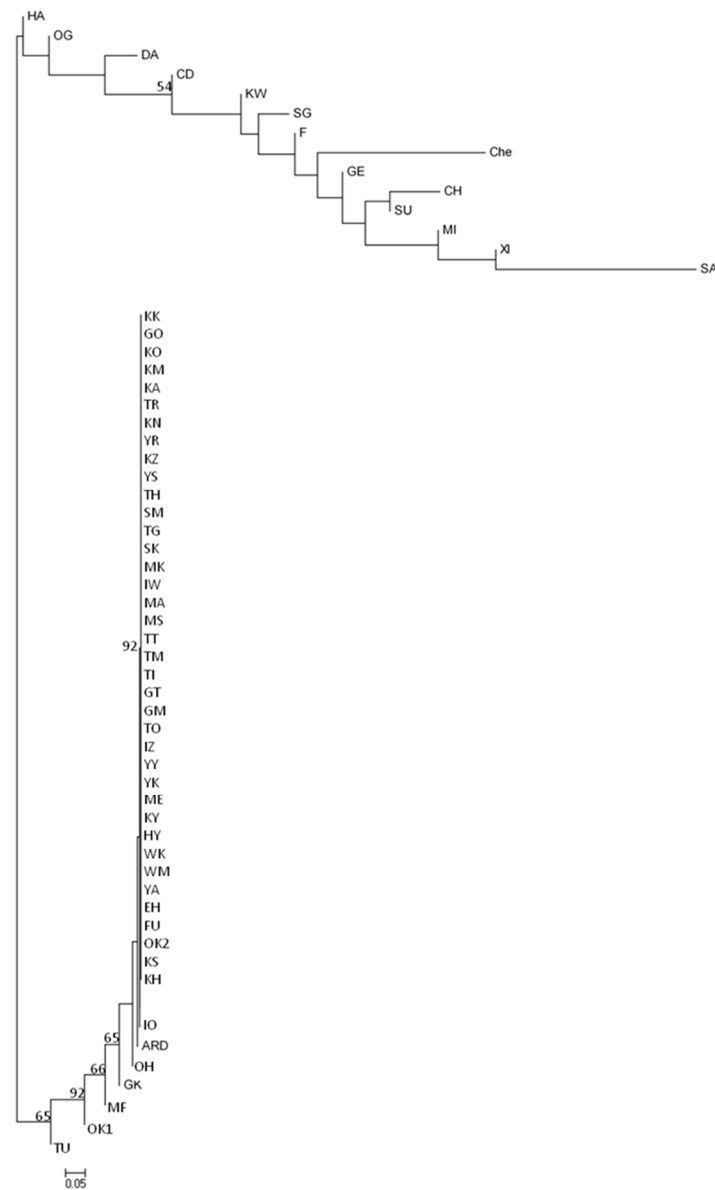


Figure A1. Neighbour-joining tree for *Quercus acutissima* Carruth. populations based on $(\delta\mu)^2$ genetic distance. Numbers indicate mean probabilities based on 1000 bootstraps and only those greater than 50 are shown.

References

1. Baldoni, L.; Tosti, N.; Ricciolini, C.; Belaj, A.; Arcioni, S.; Pannelli, G.; Germana, M.; Mulas, M.; Porceddu, A. Genetic structure of wild and cultivated olives in the central Mediterranean Basin. *Ann. Bot.* **2006**, *98*, 935–942. [[CrossRef](#)] [[PubMed](#)]
2. Fineschi, S.; Turchini, D.; Villani, F.; Vendramin, G.G. Chloroplast DNA polymorphism reveals little geographical structure in *Castanea sativa* Mill. (*Fagaceae*) throughout southern European countries. *Mol. Ecol.* **2000**, *9*, 1495–1503. [[CrossRef](#)] [[PubMed](#)]
3. Gunn, B.; Baudouin, L.; Olsen, K. Independent origins of cultivated coconut (*Cocos nucifera* L.) in the old world tropics. *PLoS ONE* **2011**, *6*, e21143. [[CrossRef](#)] [[PubMed](#)]

4. König, A.O.; Ziegenhagen, B.; Dam, B.C.; Csaikl, U.M.; Coart, E.; Degen, B.; Burg, K.; Vries, S.M.G.; Petit, R.J. Chloroplast DNA variation of oaks in western central Europe and genetic consequences of human influences. *For. Ecol. Manag.* **2002**, *156*, 147–166. [[CrossRef](#)]
5. Mohanty, A.; Martin, J.P.; Aguinaglade, I. A population genetic analysis of chloroplast DNA in wild populations of *Prunus avium* L. in Europe. *Heredity* **2001**, *87*, 421–427. [[CrossRef](#)] [[PubMed](#)]
6. Besnard, G.; Khadari, B.; Baradat, P.; Bervill, A. *Olea europaea* (Oleaceae) phylogeography based on chloroplast DNA polymorphism. *Theor. Appl. Genet.* **2002**, *104*, 1353–1361. [[PubMed](#)]
7. Magri, D.; Fineschi, S.; Bellarosa, R.; Buonamici, A.; Sebastiani, F.; Schirone, B.; Simeone, M.C.; Vendramin, G.G. The distribution of *Quercus suber* chloroplast haplotypes matches the palaeogeographical history of the western Mediterranean. *Mol. Ecol.* **2007**, *16*, 5259–5266. [[CrossRef](#)] [[PubMed](#)]
8. Dumolin, S.; Demesure, B.; Petit, R.J. Inheritance of chloroplast and mitochondrial genomes in pedunculate oak investigated with an efficient PCR method. *Theor. Appl. Genet.* **1995**, *91*, 1253–1256. [[CrossRef](#)] [[PubMed](#)]
9. Petit, R.J.; Kremer, A.; Wagner, D. Geographic structure of chloroplast DNA polymorphisms in European oaks. *Theor. Appl. Genet. Int. J. Plant Breed. Res.* **1993**, *87*, 122–128. [[CrossRef](#)] [[PubMed](#)]
10. Rajora, O.P.; Dancik, B.P. Chloroplast DNA inheritance in *Populus*. *Theor. Appl. Genet.* **1992**, *84*, 280–285. [[CrossRef](#)] [[PubMed](#)]
11. Heuertz, M.; Fineschi, S.; Anzidei, M.; Pastorelli, R.; Salvini, D.; Paule, L.; Frascaria-Lacoste, N.; Hardy, O.J.; Vekemans, X.; Vendramin, G.G. Chloroplast DNA variation and postglacial recolonization of common ash (*Faxinus excelsio* L.) in Europe. *Mol. Ecol.* **2004**, *13*, 3437–3452. [[CrossRef](#)] [[PubMed](#)]
12. Palme, A.E.; Su, Q.; Rautenberg, A.; Manni, F.; Lascoux, M. Postglacial recolonization and cpDNA variation of silver birch, *Betula pendula*. *Mol. Ecol.* **2003**, *12*, 201–212. [[CrossRef](#)] [[PubMed](#)]
13. Ebert, D.; Peakall, R. Chloroplast simple sequence repeats (cpSSRs): Technical resources and recommendations for expanding cpSSR discovery and applications to a wide array of plant species. *Mol. Ecol. Res.* **2009**, *9*, 673–690. [[CrossRef](#)] [[PubMed](#)]
14. Bagnoli, F.; Tsuda, Y.; Fineschi, S.; Bruschi, P.; Magri, D.; Zhelev, P.; Paule, L.; Simeone, M.; González-Martínez, S.; Vendramin, G. Combining molecular and fossil data to infer demographic history of *Quercus cerris*: Insights on European eastern glacial refugia. *J. Biogeogr.* **2016**, *43*, 679–690. [[CrossRef](#)]
15. Provan, J.; Powell, W.; Hollingsworth, P.M. Chloroplast microsatellites: New tools for studies in plant ecology and evolution. *Trends Ecol. Evol.* **2001**, *16*, 142–147. [[CrossRef](#)]
16. Grivet, D.; Deguilloux, M.F.; Petit, R.J.; Sork, V.L. Contrasting patterns of historical colonization in white oaks (*Quercus* spp.) in California and Europe. *Mol. Ecol.* **2006**, *15*, 4085–4093. [[CrossRef](#)] [[PubMed](#)]
17. Marsico, T.D.; Hellmann, J.J.; Romero-Severson, J. Patterns of seed dispersal and pollen flow in *Quercus garryana* (Fagaceae) following post-glacial climatic changes. *J. Biogeogr.* **2009**, *36*, 929–941. [[CrossRef](#)]
18. Mohammad-Panah, N.; Shabaniyan, N.; Khadivi, A.; Rahmani, M.S.; Emami, A. Genetic structure of gall oak (*Quercus infectoria*) characterized by nuclear and chloroplast SSR markers. *Tree Genet. Genomes* **2017**, *13*, 70–81. [[CrossRef](#)]
19. Iida, S. Quantitative analysis of acorn transportation by rodents using magnetic locator. *Vegetatio* **1996**, *124*, 39–43. [[CrossRef](#)]
20. Satake, Y.; Hara, H.; Watari, S.; Tominari, T. *Wild Flowers of Japan—Woody Plants*; Heibonsha Ltd.: Tokyo, Japan, 1989. (In Japanese)
21. Kurata, S. *Trip for Plants and Literature*; Chikyu-Sha: Tokyo, Japan, 1976. (In Japanese)
22. Fukamachi, K.; Oku, H.; Rackham, O. A comparative study on trees and hedgerows in Japan and England. In *Landscape Interfaces*; Palang, H., Fry, G., Eds.; Kluwer Academic Publishers: Dordrecht, The Netherlands, 2003; pp. 53–69.
23. Tsukada, M. Map of vegetation during the Last Glacial Maximum in Japan. *Quat. Res.* **1985**, *23*, 369–381. [[CrossRef](#)]
24. Zhang, X.; Li, Y.; Liu, C.; Xia, T.; Zhang, Q.; Fang, Y. Phylogeography of the temperate tree species *Quercus acutissima* in China: Inferences from chloroplast DNA variations. *Biochem. Syst. Ecol.* **2015**, *63*, 190–197. [[CrossRef](#)]
25. Yasuda, Y.; Miyoshi, N. *Illustration Vegetation History of Japan*; Asakura Pub.: Tokyo, Japan, 1998. (In Japanese)
26. Shimaji, K.; Itoh, T. *Comprehensive List of Unearthed Wood Product from the Remains in Japan*; Yuzankaku Pub.: Tokyo, Japan, 1988. (In Japanese)
27. Suzuki, M. *Japanese and Wood Culture*; Yasaka Shobo: Tokyo, Japan, 2002. (In Japanese)

28. Nakamura, K. *Historical Study on Shitake Mushroom Culture*; Tohsen Pub.: Tokyo, Japan, 1983. (In Japanese)
29. Abrams, M.D.; Copenheaver, C.A.; Terazawa, K.; Umeki, K.; Takiya, M.; Akashi, N. A 370-year dendroecological history of an old-growth *Abies-Acer-Quercus* forest in Hokkaido, northern Japan. *Can. J. For. Res.* **1999**, *29*, 1891–1899. [[CrossRef](#)]
30. Sakai, T.; Tanaka, H.; Shibata, M.; Suzuki, W.; Nomiya, H.; Kanazashi, T.; Iida, S.; Nakashizuka, T. Riparian disturbance and community structure of a *Quercus-Ulmus* forest in central Japan. *Plant Ecol.* **1999**, *140*, 99–109. [[CrossRef](#)]
31. Kanno, M.; Yokoyama, J.; Suyama, Y.; Ohyama, M.; Itoh, T.; Suzuki, M. Geographical distribution of two haplotypes of chloroplast DNA in four oak species (*Quercus*) in Japan. *J. Plant Res.* **2004**, *117*, 311–317. [[CrossRef](#)] [[PubMed](#)]
32. Okaura, T.; Quang, N.D.; Ubukata, M.; Harada, K. Phylogeographic structure and late Quaternary population history of the Japanese oak *Quercus mongolica* var. *crispula* and related species revealed by chloroplast DNA variation. *Genes Genet. Syst.* **2007**, *82*, 465–477. [[PubMed](#)]
33. Ohsawa, T.; Tsuda, Y.; Saito, Y.; Ide, Y. The genetic structure of *Quercus crispula* in northeastern Japan as revealed by nuclear simple sequence repeat loci. *J. Plant Res.* **2011**, *124*, 645–654. [[CrossRef](#)] [[PubMed](#)]
34. Lian, C.L.; Oishi, R.; Miyashita, N.; Nara, K.; Nakaya, H.; Wu, B.Y.; Zhou, Z.H.; Hogetsu, T. Genetic structure and reproduction dynamics of *Salix reinii* during primary succession on Mount Fuji, as revealed by nuclear and chloroplast microsatellite analysis. *Mol. Ecol.* **2003**, *12*, 609–618. [[CrossRef](#)] [[PubMed](#)]
35. Deguilloux, M.F.; Dumolin-Lapegue, S.; Gielly, L.; Grivet, D.; Petit, R.J. A set of primers for the amplification of chloroplast microsatellites in *Quercus*. *Mol. Ecol. Notes* **2003**, *3*, 24–27. [[CrossRef](#)]
36. Pons, O.; Petit, R.J. Measuring and testing genetic differentiation with ordered versus unordered alleles. *Genetics* **1996**, *14*, 1237–1245.
37. Estoup, A.; Jarne, P.; Cornuet, J.M. Homoplasy and mutation model at microsatellite loci and their consequences for population genetics analysis. *Mol. Ecol.* **2002**, *11*, 1591–1604. [[CrossRef](#)] [[PubMed](#)]
38. Petit, R.J.; El Mousadik, A.; Pons, O. Identifying populations for conservation on the basis of genetic markers. *Conserv. Biol.* **1998**, *12*, 844–855. [[CrossRef](#)]
39. Nei, M. Analysis of gene diversity in subdivided populations. *Proc. Natl. Acad. Sci. USA* **1973**, *70*, 3321–3323. [[CrossRef](#)] [[PubMed](#)]
40. Slatkin, M. A measure of population subdivision based on microsatellite allele frequencies. *Genetics* **1995**, *139*, 457–462. [[PubMed](#)]
41. Hedric, P.W. A standardized genetic differentiation measure. *Evolution* **2005**, *59*, 1633–1638. [[CrossRef](#)]
42. Bryant, D.; Moulton, V. NeighborNet: An agglomerative method for the construction of planar phylogenetic networks. In *Algorithms in Bioinformatics, Proceedings of WABI, Rome, Italy, 17–21 September 2002*; Guigó, R., Gusfield, D., Eds.; Springer: Berlin, Germany, 2002; Volume 2452, pp. 375–391.
43. Huson, D.H.; Bryant, D. Application of Phylogenetic Networks in Evolutionary Studies. *Mol. Biol. Evol.* **2006**, *23*, 254–267. [[CrossRef](#)] [[PubMed](#)]
44. Goldstein, D.B.; Linares, A.R.; Feldman, M.W.; Cavallisforza, L.L. Genetic absolute dating based on microsatellites and origin of modern humans. *Proc. Natl. Acad. Sci. USA* **1995**, *92*, 6720–6727. [[CrossRef](#)]
45. Langella, O. Population 1.2.30. Logiciel de Génétique des Populations. Laboratoire Populations, Génétique et Évolution, CNRS UPR 9034, Gif-sur-Yvette. Available online: <http://www.cnrs-gif.fr/pge/> (accessed on 2 October 2009).
46. Parks, D.H.; Mankowski, T.; Zangoeei, S.; Porter, M.S.; Armanini, D.G.; Baird, D.J.; Langille, M.G.I.; Beiko, R.G. GenGIS 2: Geospatial Analysis of Traditional and Genetic Biodiversity, with New Gradient Algorithms and an Extensible Plugin Framework. *PLoS ONE* **2013**, *8*, e69885. [[CrossRef](#)] [[PubMed](#)]
47. Tsuda, Y.; Ide, Y. Chloroplast DNA phylogeography of *Betula maximowicziana*, a long-lived pioneer tree species and noble hardwood in Japan. *J. Plant Res.* **2010**, *123*, 343–353. [[CrossRef](#)] [[PubMed](#)]
48. Heuertz, M.; Carnevale, S.; Fineschi, S.; Sebastiani, F.; Hausman, J.F.; Paule, L.; Vendramin, G.G. Chloroplast DNA phylogeography of European ashes, *Fraxinus* sp. (Oleaceae): Roles of hybridization and life history traits. *Mol. Ecol.* **2006**, *15*, 2131–2140. [[CrossRef](#)] [[PubMed](#)]
49. Saito, Y.; Tsuda, Y.; Uchiyama, K.; Fukuda, T.; Ide, Y. Genetic structure of *Quercus variabilis* in Japan. *For. Genet. Tree Breed.* **2017**, in print. (In Japanese with English Summary).

50. Sugahara, K.; Kaneko, Y.; Ito, S.; Yamanaka, K.; Sakio, H.; Hoshizaki, K.; Suzuki, W.; Yamanaka, N.; Setoguchi, H. Phylogeography of Japanese horse chestnut (*Aesculus turbinata*) in the Japanese Archipelago based on chloroplast DNA haplotypes. *J. Plant Res.* **2011**, *124*, 75–83. [[CrossRef](#)] [[PubMed](#)]
51. Clark, J.S.; Fastie, C.; Hurtt, G.; Jackson, S.T.; Johnson, C.; King, G.A.; Lewis, M.; Lynch, J.; Pacala, S.; Prentice, C.; et al. Reid's Paradox of Rapid Plant Migration: Dispersal theory and interpretation of paleoecological records. *BioScience* **1998**, *48*, 13–24. [[CrossRef](#)]
52. Hashizume, H. Flowering habit in young trees of *Quercus acutissima* Carr. and *Quercus serrata* Thunb. *Hardwood Res.* **1983**, *2*, 49–54. (In Japanese with English Summary)
53. Toda, T.; Fujimoto, Y.; Nishimura, K.; Maeda, T. Reserch of 18 year old plantation *Quercus acutissima* established by imported seed. *Annu. Rep. Kyushu Reg. Breed.* **1986**, *13*, 100–106. (In Japanese)
54. Aguinalalde, I.; Hampe, A.; Mohanty, A.; Martin, J.P.; Duminil, J.; Petit, R.J. Effects of life-history traits and species distribution on genetic structure at maternally inherited markers in European trees and shrubs. *J. Biogeogr.* **2005**, *32*, 329–339. [[CrossRef](#)]
55. Duminil, J.; Fineschi, S.; Hampe, A.; Jordano, P.; Salvini, D.; Vendramin, G.G.; Petit, R.J. Can population genetic sturcture be predicted from life-history traits? *Am. Nat.* **2007**, *169*, 662–672. [[PubMed](#)]
56. Sugiura, N.; Tang, D.; Kurokochi, H.; Saito, Y.; Ide, Y. Genetic structure of *Quercus gilva* Blume in Japan as revealed by chloroplast DNA sequences. *Botany* **2015**, *93*, 873–880. [[CrossRef](#)]
57. Tomaru, N.; Takahashi, M.; Tsumura, Y.; Takahashi, M.; Ohba, K. Intraspecific variation and phylogeographic patterns of *Fagus crenata* (Fagaceae). *Am. J. Bot.* **1998**, *85*, 629–636. [[CrossRef](#)] [[PubMed](#)]
58. Okaura, T.; Harada, K. Phylogeographical structure revealed by chloroplast DNA variation in Japanese beech (*Fagus crenata* Blume). *Heredity* **2002**, *88*, 322–329. [[CrossRef](#)] [[PubMed](#)]
59. Aizawa, M.; Yoshimaru, H.; Saito, H.; Katsuki, T.; Kawahara, T.; Kitamura, K.; Shi, F.; Kaji, M. Phylogeography of a northeast Asian spruce, *Picea jezoensis*, inferred from genetic variation observed in organelle DNA markers. *Mol. Ecol.* **2007**, *16*, 3393–3405. [[CrossRef](#)] [[PubMed](#)]



© 2017 by the authors. Licensee MDPI, Basel, Switzerland. This article is an open access article distributed under the terms and conditions of the Creative Commons Attribution (CC BY) license (<http://creativecommons.org/licenses/by/4.0/>).