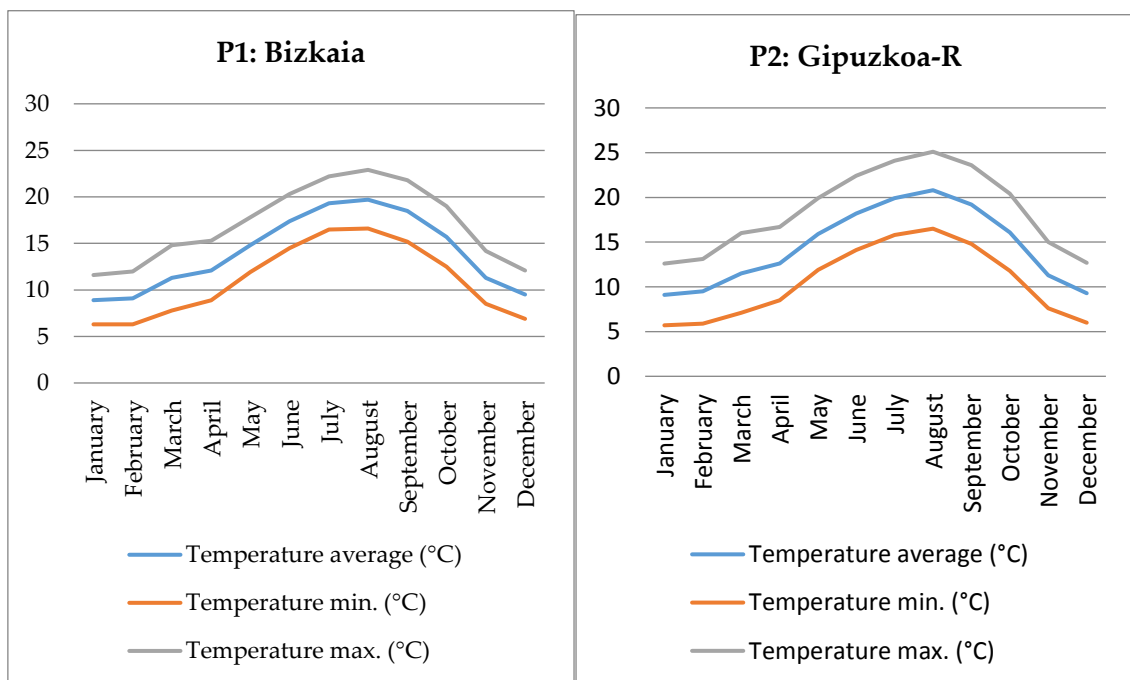
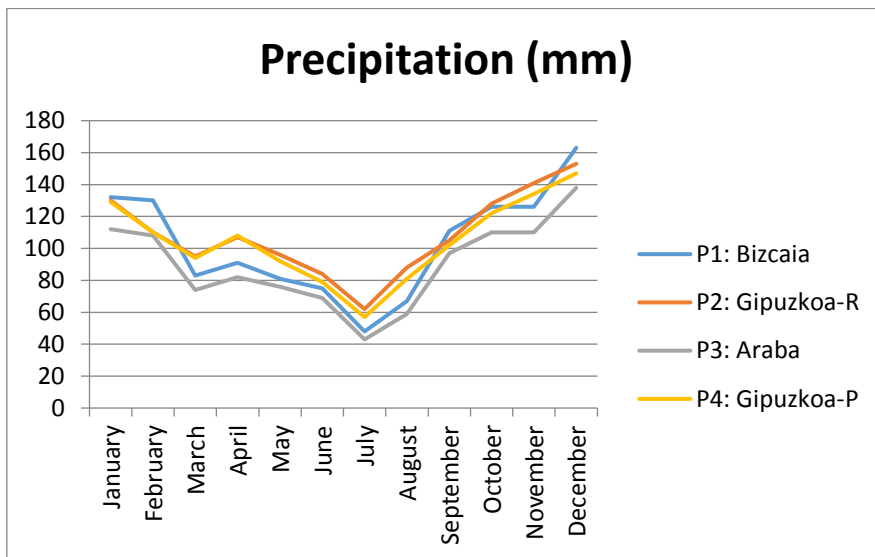
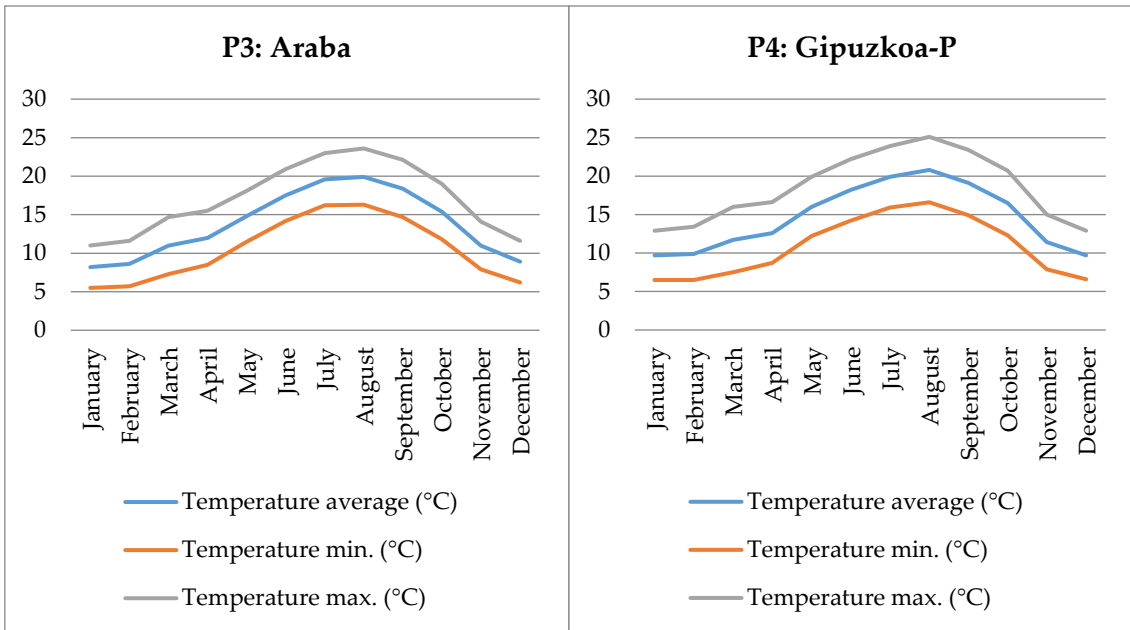


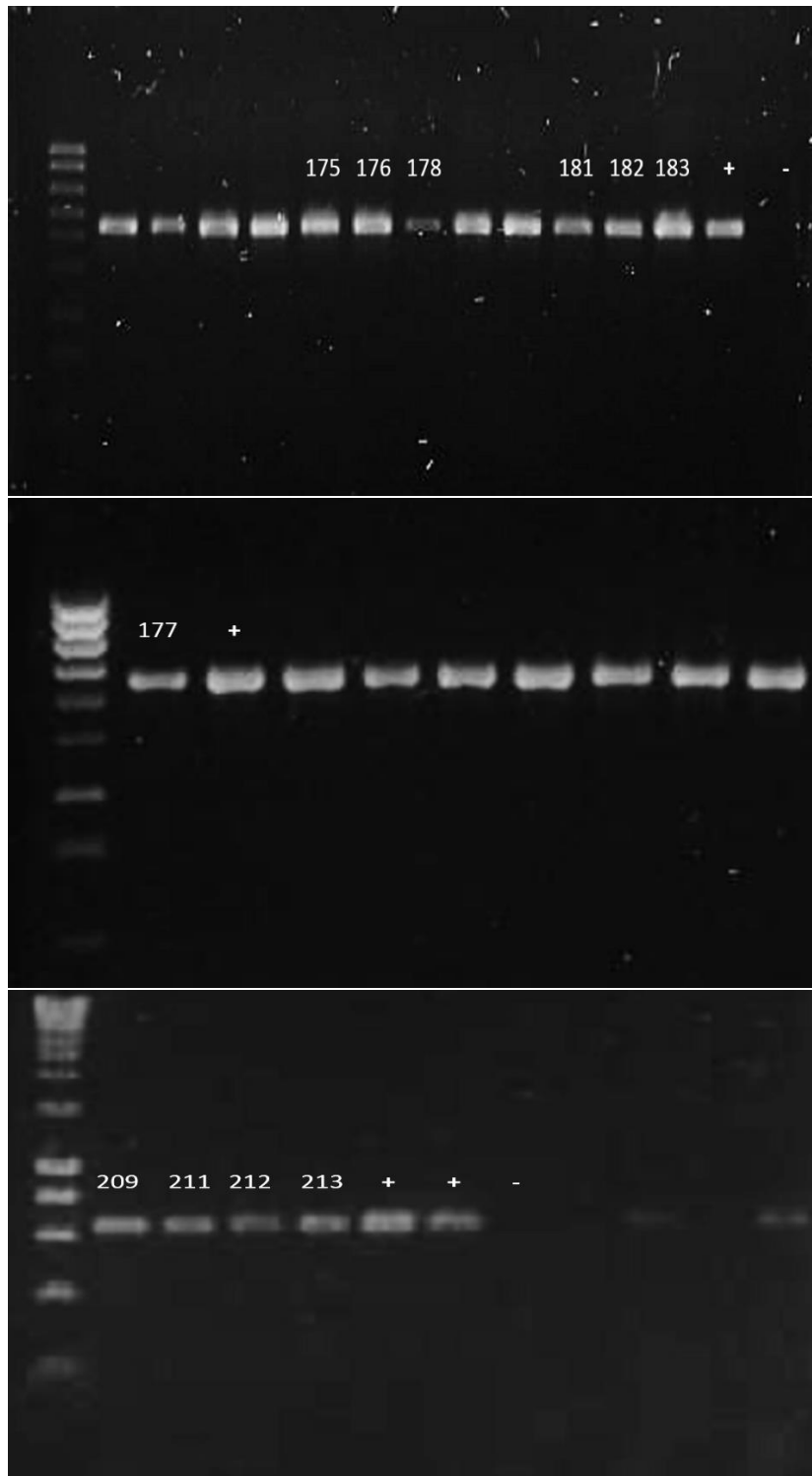


**Figure S1:** Map location of sampled *Pinus* plantations. *P. radiata* plantations: P1 (Bizkaia), P2 (Gipuzkoa-R), P3 (Araba). *P. pinaster* plantations: P4 (Gipuzkoa-P).





**Figure S2:** Climatological conditions at each plantation: temperature average, minimum and maximum temperatures and precipitation per month in the period 2008-2017. *P. radiata* plantations: P1 (Bizkaia), P2 (Gipuzkoa-R), P3 (Araba). *P. pinaster* plantations: P4 (Gipuzkoa-P).



**Figure S3:** Electrophoresis gels of *Diplodia sapinea* PCR amplicons (650 bp) using the specific primers CTTATATATCAAACCTATGCTTTG-TA and GCTTACACTTTCATTTATAGACC for *D. sapinea* as described by Smith and Stanosz 2006.