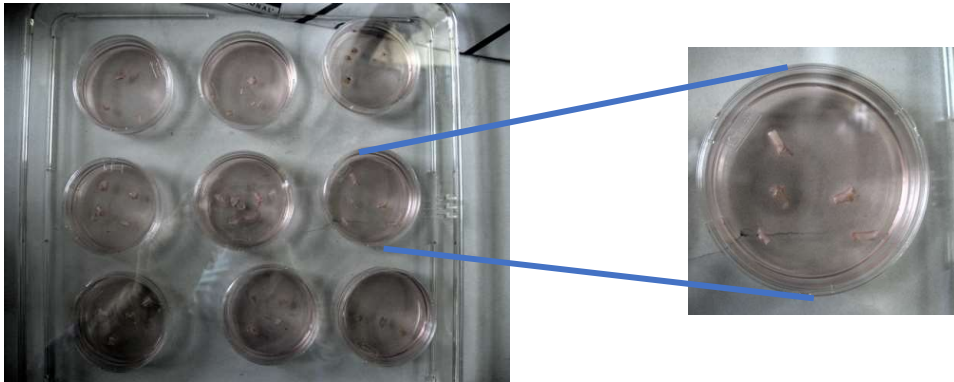
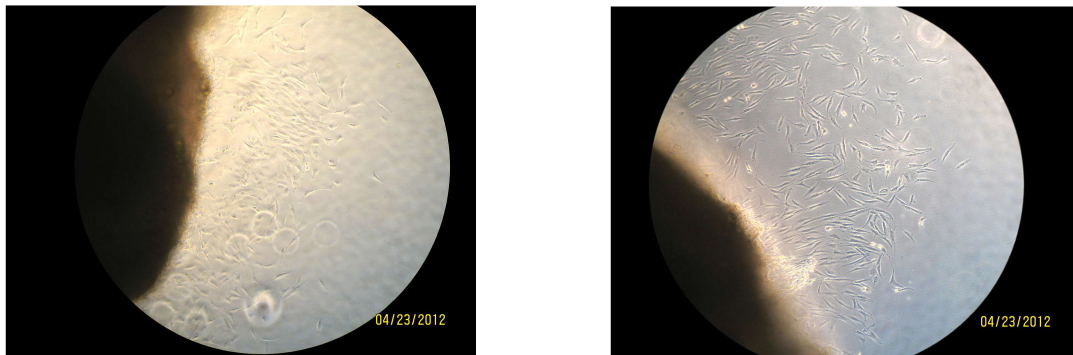


### Supplementary Figure S1A : Macaque primary fibroblast cell isolation procedure

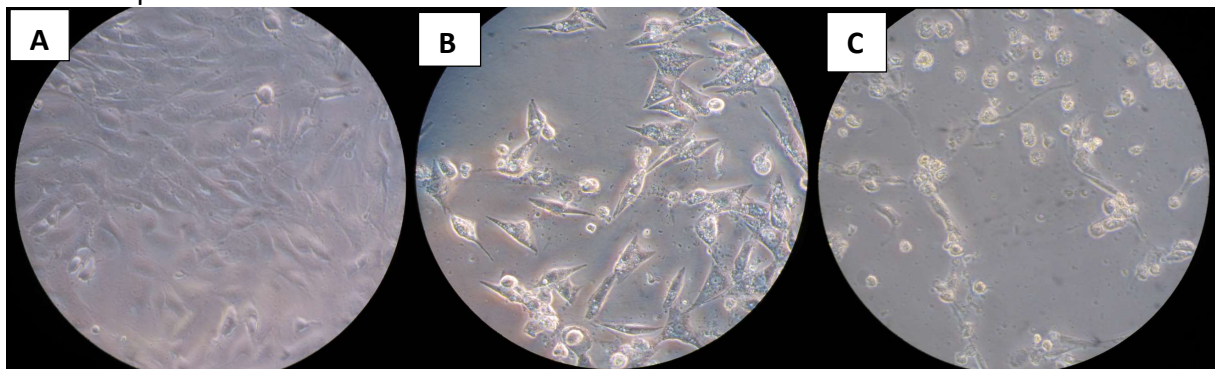


Piece of tendon obtained at necropsy from a healthy cynomolgus macaque was seeded in a small Petri dishes as described in Material and method.



Two views of fibroblast cells migrating from the tendon explant at day 7 (magnification X10).

**Supplementary Figure S1B : Differential impact of chloroquine or CHIKV on primary macaque fibroblast cells** (passage 3 to 6). Picture are representative of 2 experiments performed in triplicate described in Figure 1B. Picture (all magnification 40X) were obtained at 48 hours post exposition **Panel A:** treated with 5  $\mu$ M of Chloroquine and mock-infected; **Panel B:** treated with 40  $\mu$ M of Chloroquine and mock-infected **Panel C:** treated with 5  $\mu$ M of Chloroquine and CHIKV infected.



In panel A, normal aspect of fibroblasts stacked on the plate; in panel B, fibroblast were highly refringent and some of them evolved to round form with large cytoplasmic lysosomal structures; in panel C, close to all the cells are killed and detached from the plate.