

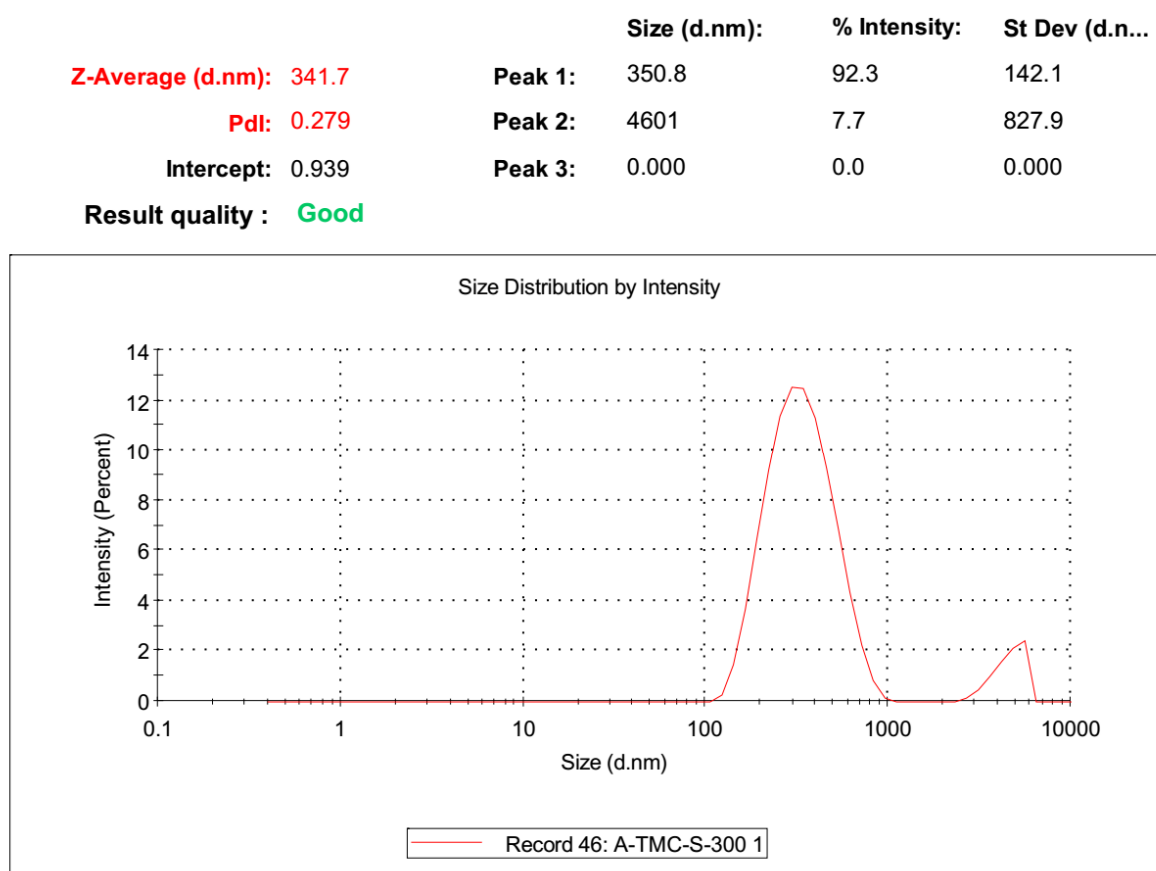
## Supplement data

**Table S1 Physical properties of S-TMC NPs**

Nanoparticles	Particle size (nm)	Polydispersity index	Zeta potential	% loading efficiency
		(PDI)	(mV)	(LE)
TMC NPs	358.1 ± 7.404	0.354 ± 0.023	15.7 ± 0.551	-
S-TMC NPs	343 ± 3.402	0.294 ± 0.023	14.9 ± 0.451	95.08 ± 4.50

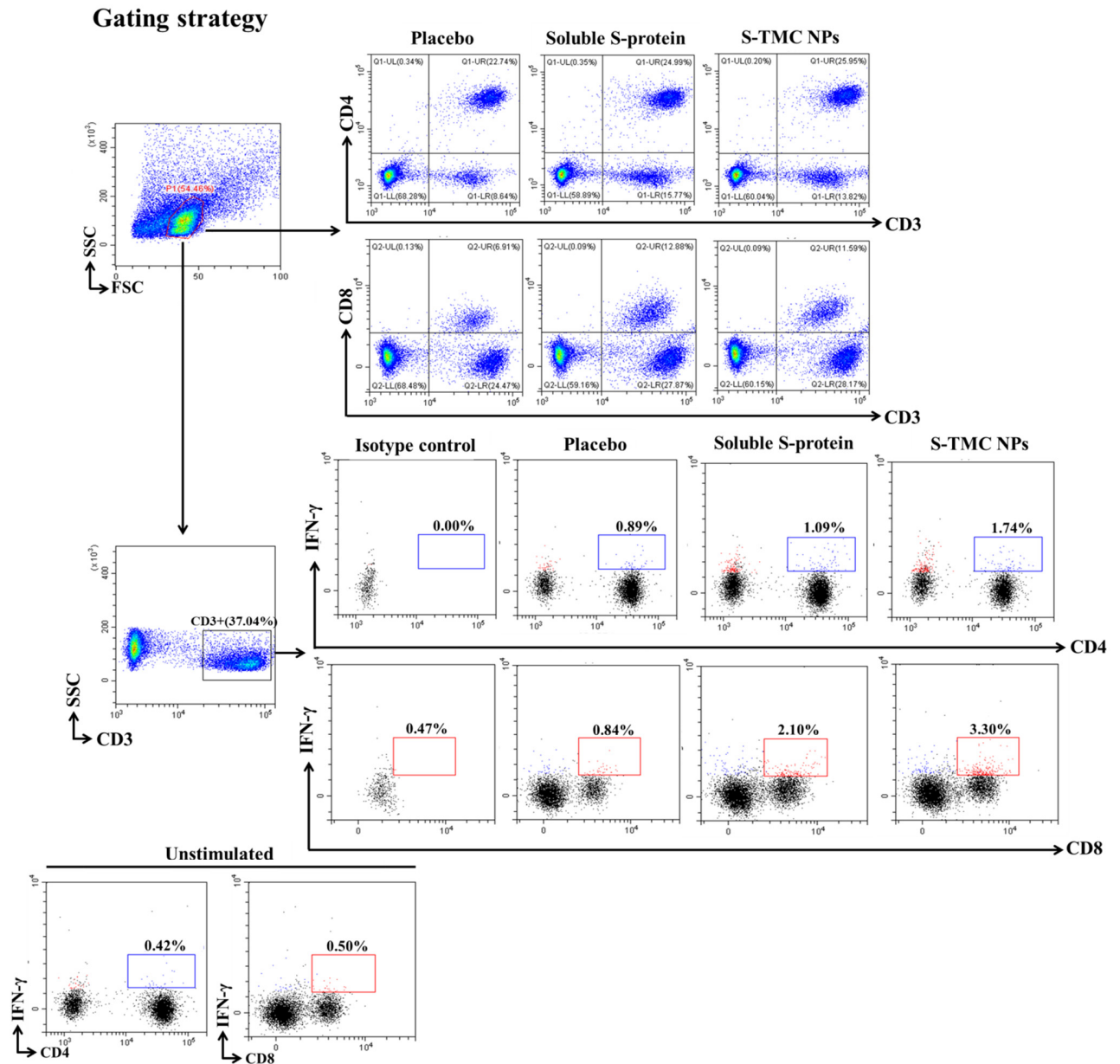
Data are shown as mean ± SD of three independent experiments.

**Figure S1**



**Figure S1 Size distribution of S-TMC NPs by dynamic light scattering.** Data presents a representative experiment from three independent sets of data.

**Figure S2**



**Figure S2 Gating strategy used for quantitation of splenic T lymphocytes.** The cultivated splenocytes were *ex vivo* stimulated with 10 µg/mL of recombinant S-protein for 72 h. After treatment, stimulated cells were harvested and stained with antibodies specific to CD3, CD4,

CD8 and IFN- $\gamma$ . The percentages of CD3<sup>+</sup>CD4<sup>+</sup>, CD3<sup>+</sup>CD8<sup>+</sup>, IFN- $\gamma$ <sup>+</sup>CD4<sup>+</sup> and IFN- $\gamma$ <sup>+</sup> CD8<sup>+</sup> cells in cultivated splenocytes were determined by flow cytometry.