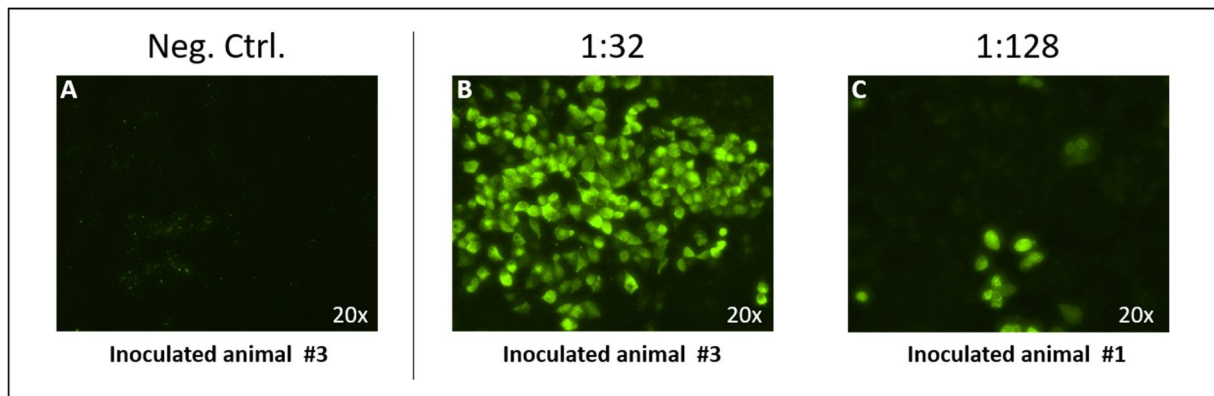


## Supplementary Data



**Supplementary Figure S1:** Immunofluorescence assay of animal sera showing sero-reactivity after infection of Egyptian fruit bats with A/bat/Egypt/381OP/2017 (H9N2). Cells were seeded in a 96-well plate and grown for 24 hours. Afterwards, cells were infected with A/bat/Egypt/381OP/2017 (H9N2) for 24 hours, followed by fixation with 4% paraformaldehyde (PFA) and permeabilization with 0.5% Triton-X-100 in PBS. Finally, cells were incubated for 1 h with the respective animal sera in a dilution series of 1:10 – 1:256, as well as with a negative serum sample of each respective animal taken before start of the experiment. Pictures were taken at a 20x magnification **A** Fixed and permeabilized infected cells were incubated for 1 h with negative serum of the respective animal taken before start of the experiment. **B** Fixed and permeabilized infected cells were incubated for 1 h with a 1:32 dilution of serum taken from the respective inoculated animal #3 at 21 dpi **C** Fixed and permeabilized infected cells were incubated for 1 h with a 1:128 dilution of serum taken from the respective inoculated animal #1 at 21 dpi.

**Supplementary Table S1:** S/P-values of the NP-ELISA with sera collected from animals that were infected with A/bat/Egypt/381OP/2017 (H9N2)

	S/P-value d0	S/P-value d7	S/P-value d21
Contact animal #1	106,4039871		105,6568482
Contact animal #2	106,8042283		99,92884341
Contact animal #3	103,9224447		101,1295883
Contact animal #4	104,9719806		99,17281922
Contact animal #5	110,0951702	101,2630056	
Contact animal #6	109,9261799	98,55021231	
Inoculated animal #1	105,8169531		21,02641578
Inoculated animal #2	105,3633365		45,21924945
Inoculated animal #3	107,7292534		13,25269088
Inoculated animal #4	107,4268458		53,20644148
Inoculated animal #5	107,1422194	70,62172262	
Inoculated animal #6	108,6631637	82,27341541	

≤45% positive; 45% - 50% questionable; ≥50% negative