

Phylogenetic analysis of the 2020 West Nile virus (WNV) outbreak in Andalusia (Spain)

Carlos S. Casimiro-Soriguer^{1,2,+}, Javier Perez-Florida^{1,2,+}, Jose L. Fernandez-Rueda¹, Irene Pedrosa-Corral^{3,4}, Vicente Guillot-Sulay^{3,4}, Nicola Lorusso⁵, Luis Javier Martinez-Gonzalez⁶, Jose M. Navarro-Mari^{3,4}, Joaquin Dopazo^{1,2,7,8,*}, Sara Sanbonmatsu-Gámez^{3,4*}

¹ Clinical Bioinformatics Area. Fundación Progreso y Salud (FPS). Hospital Virgen del Rocio. 41013. Sevilla. Spain;1; e-mail@e-mail.com

² Computational Systems Medicine, Institute of Biomedicine of Seville (IBIS), Hospital Virgen del Rocio. 41013. Sevilla. Spain ;

³ Laboratorio de Referencia de Virus de Andalucía. Servicio de Microbiología. Hospital Virgen de las Nieves, Granada. Spain

⁴ Instituto de investigación biosanitaria, ibs.GRANADA. Granada.Spain

⁵ Dirección General de Salud Pública y Ordenación Farmacéutica. Consejería de Salud y Familias. Junta de Andalucía;

⁶ GENYO. Centre for Genomics and Oncological Research: Pfizer - University of Granada - Andalusian Regional Government. Granada.Spain;

⁷ Bioinformatics in Rare Diseases (BiER). Centro de Investigación Biomédica en Red de Enfermedades Raras (CIBERER). FPS. Hospital Virgen del Rocio. 41013. Sevilla. Spain;

⁸ Functional Genomics Node (INB). FPS. Hospital Virgen del Rocio. 41013 Sevilla. Spain.

+ Equal contributions

* Correspondence: JD: joaquin.dopazo@juntadeandalucia.es, SB-G: saral.sanbonmatsu.sspa@juntadeandalucia.es

WNV outbreak

Maintained by Clinical Bioinformatics Area,

Showing 152 of 152 genomes sampled between Dec 1953 and Aug 2020.

Phylogeny

Country ^

Italy	Argentina
Greece	Australia
Austria	Bulgaria
USA	Hungary
Russia	Madagascar
South Africa	Belgium
Germany	Brazil
Spain	British Virgin Isl
Czech Republic	China
Serbia	Cyprus
Azerbaijan	Democratic Republ
India	Turkey
Slovakia	Uganda
Israel	Ukraine
Romania	United Arab Emirat

ZOOM TO SELECTED

RESET LAYOUT

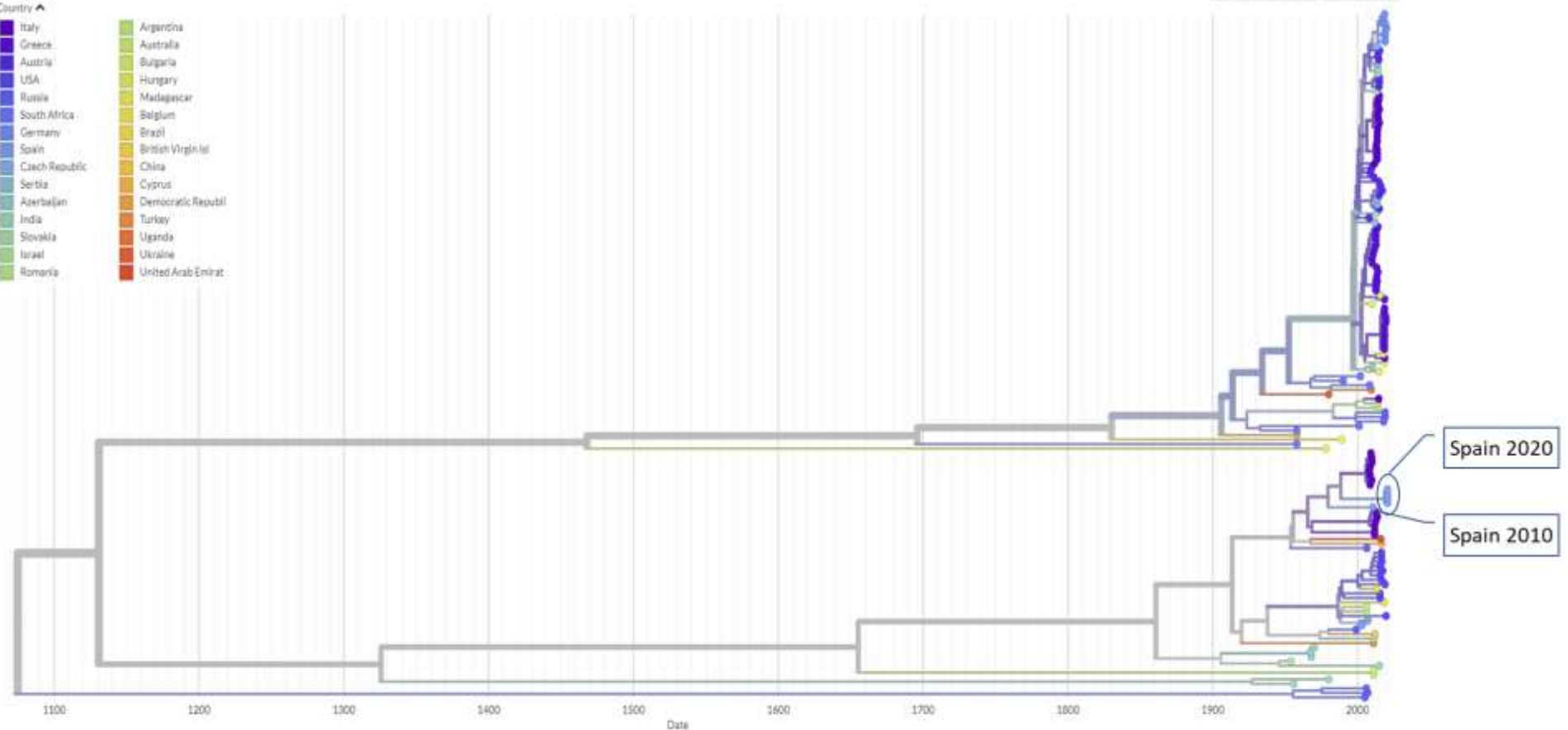


Figure S1. Screenshot of the local Nextstrain server with all the WNVs from Table S1 and the Spanish sequences of the 2020 outbreak, reported here. The Spanish 2020 outbreak and previous outbreaks (2010) are marked in the figure. The tree is available at: <http://nextstrain.clinbioinfoespa.es/wnv>