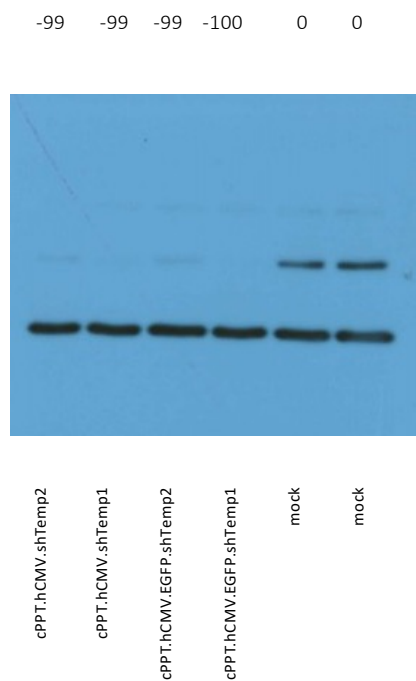


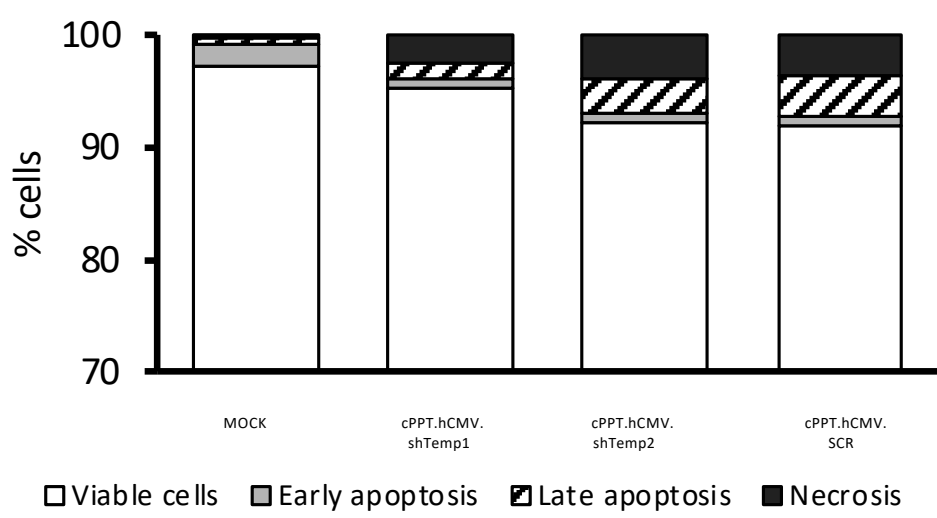
Zorzan et al.

Targeting the regulatory subunit R2Alpha of protein kinase A in human glioblastoma through shRNA-expressing lentiviral vectors

Supplementary Figure S1: PKA R2A silencing in the same experiment shown in Fig. 3 (main text). U87 cells, 6 days post-transduction. The percentage of reduction relative to mock is shown above each lane.

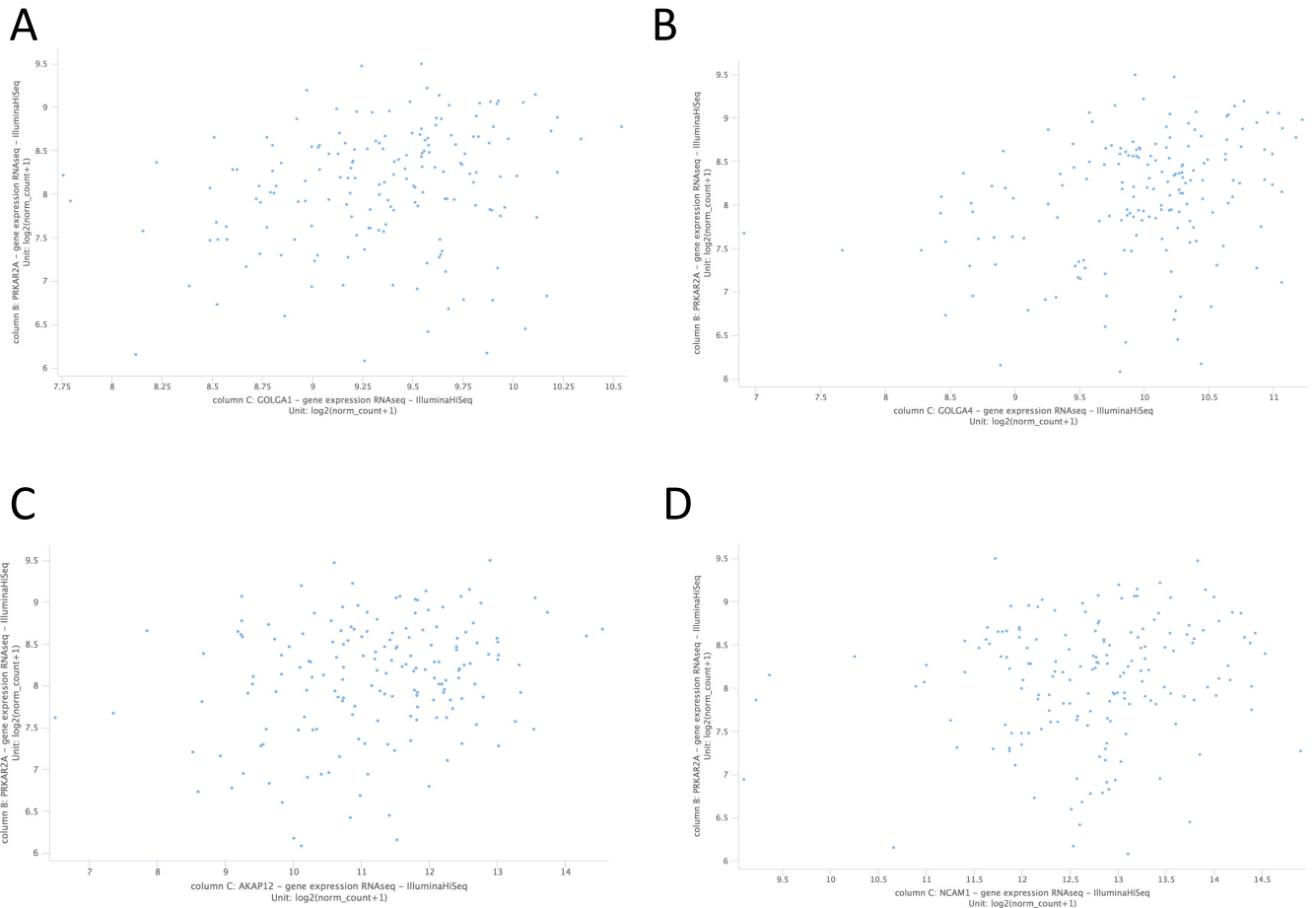


Supplementary Figure S2: annexin V-propidium iodide mortality assay 13 days after transduction: no significant change in mortality was detected in each condition.



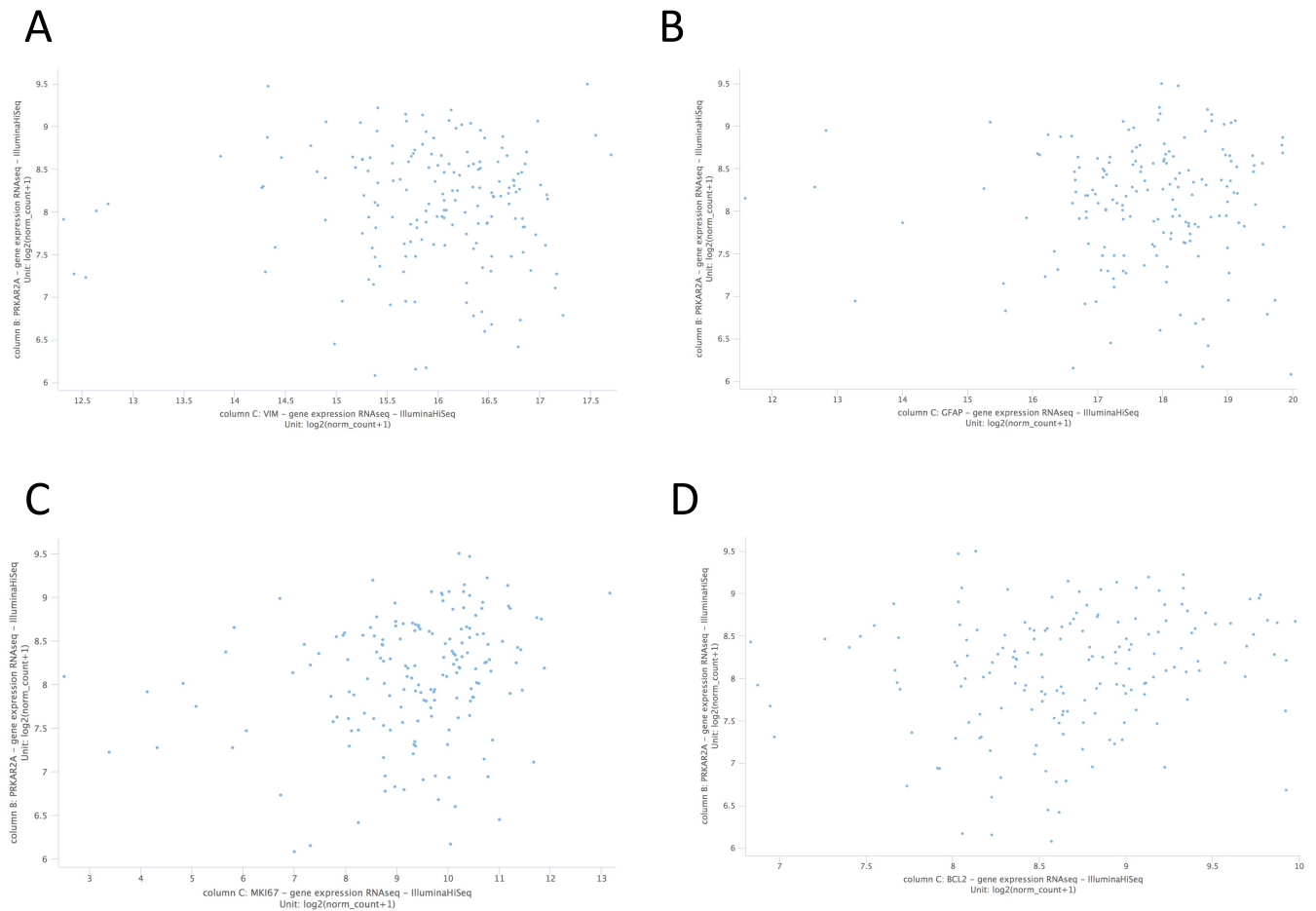
Supplementary Figure S3: Correlation between PRKAR2A expression and the expression of genes GOLGA1 (A) and GOLGA4 (B) as Golgi markers, AKAP12 (C) as a PKAR2A docking protein, and NCAM1 (D) as a gene highly expressed in glioblastoma.

Data on glioblastoma (n=172) were retrieved from TCGA and analyzed with Xena browser. Significant positive correlations were found for GOLGA1, Pearson's $Rho=0.2054$, $p=0.0068$, GOLGA4, Pearson's $Rho=0.3178$, $p=0.00002$ and AKAP12, Pearson's $Rho=0.2222$, $p=0.0033$, while a barely significant positive correlation was found for NCAM1, Pearson's $Rho=0.1567$, $p=0.0401$.



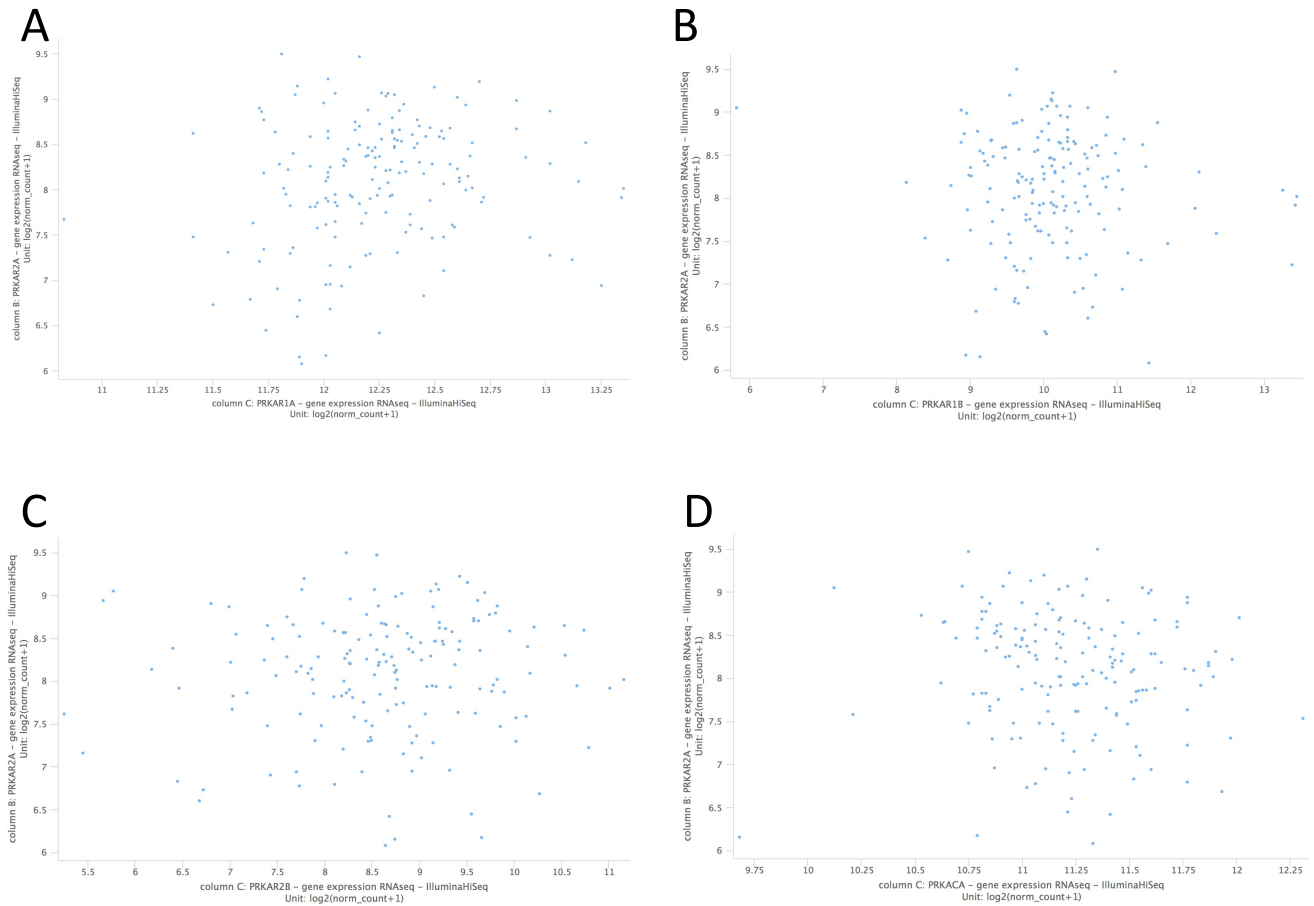
Supplementary Figure S4: Correlation between PRKAR2A expression and the expression of genes VIM (A) as a stem cell marker, GFAP (B) as a marker of differentiated cells, MKI67 (C) as a proliferation marker, BCL2 (D) as an inhibitor of pro-apoptotic genes.

Data on glioblastoma (n=172) were retrieved from TCGA and analyzed with Xena browser. No significant correlation was found for VIM and GFAP, while significant positive correlations were found for MKI67, Pearson's $Rho=0.2343$, $p=0.0012$, and BCL2, Pearson's $Rho=0.1962$, $p=0.0099$.

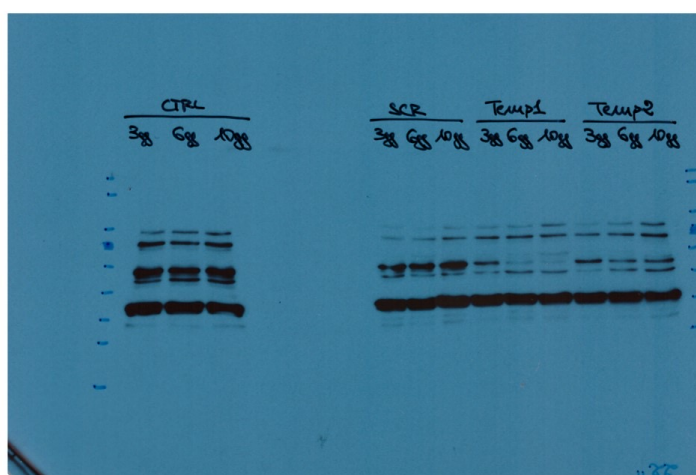
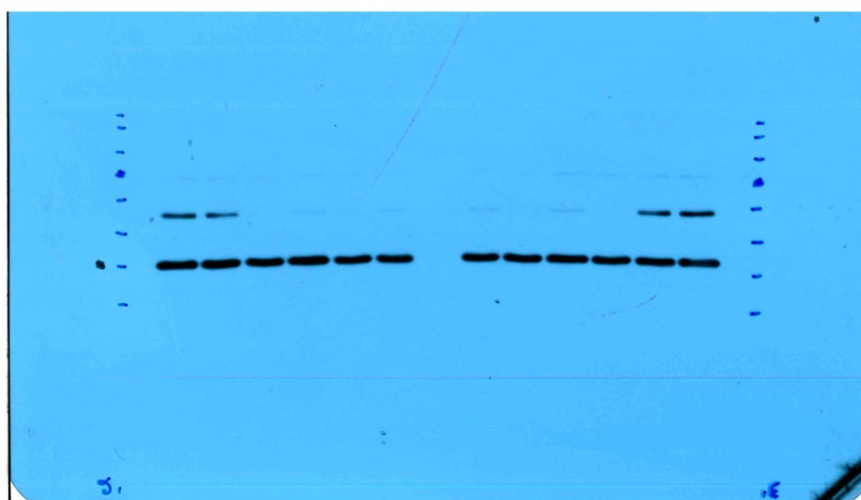
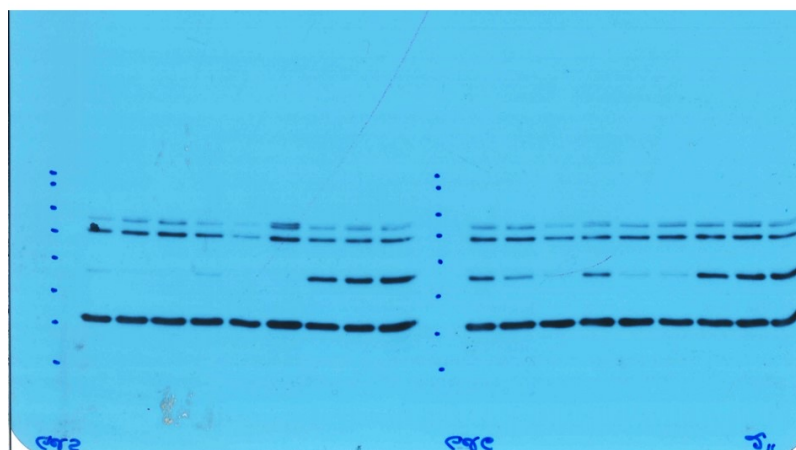
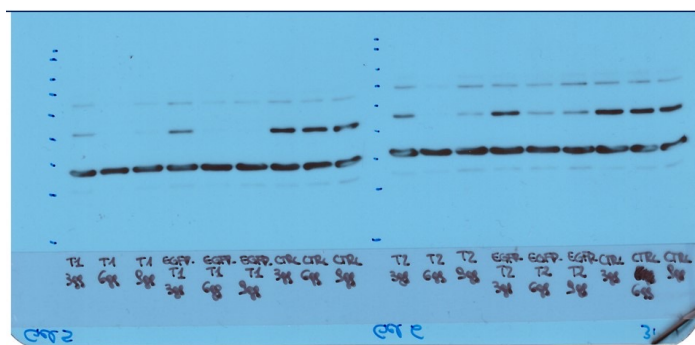
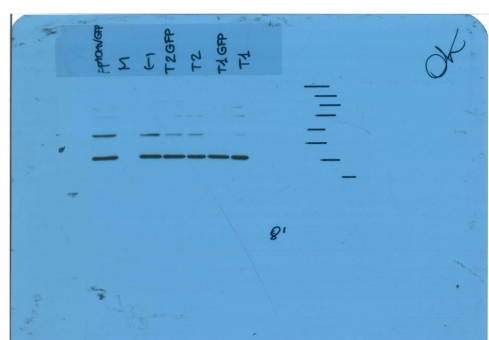


Supplementary Figure S5: Correlation between PRKAR2A expression and the expression of genes PRKAR1A (A), PRKAR1B (B), PRKAR2B (C), PRKACA (D).

Data on glioblastoma (n=172) were retrieved from TCGA and analyzed with Xena browser. One slightly positive, yet significant correlation was found, between PRKAR2A and PRKAR1A: Pearson's Rho=0.1720, p=0.024.

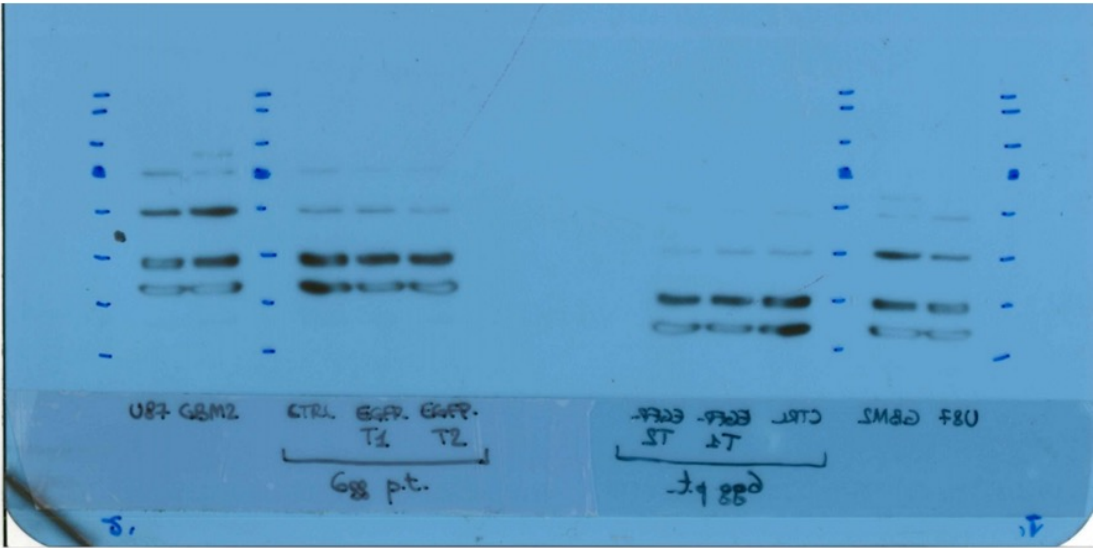


B

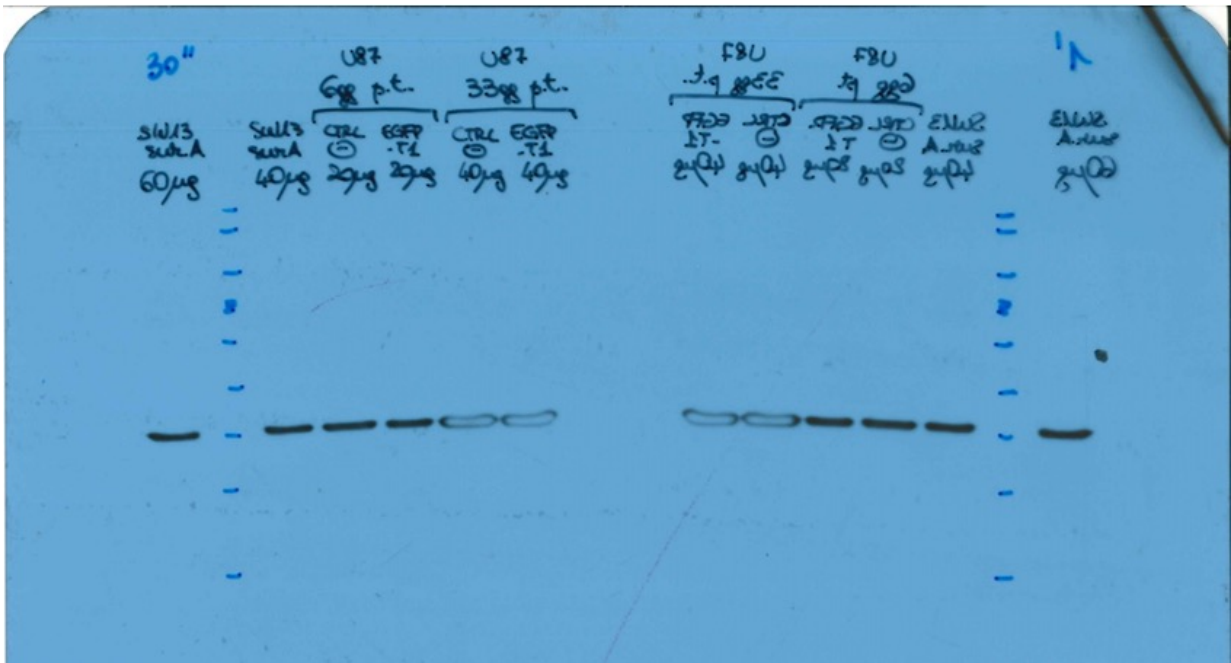
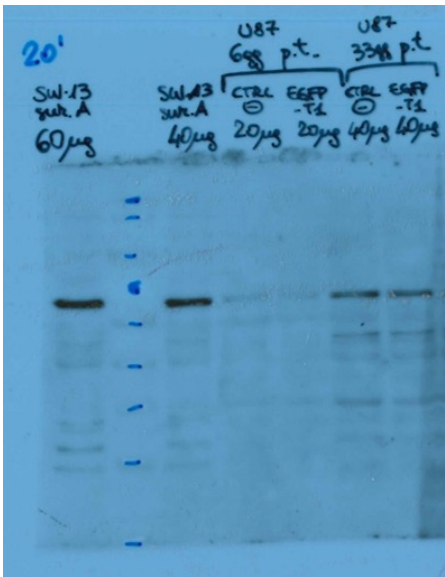


ORIGINAL BLOT FIGURE 3

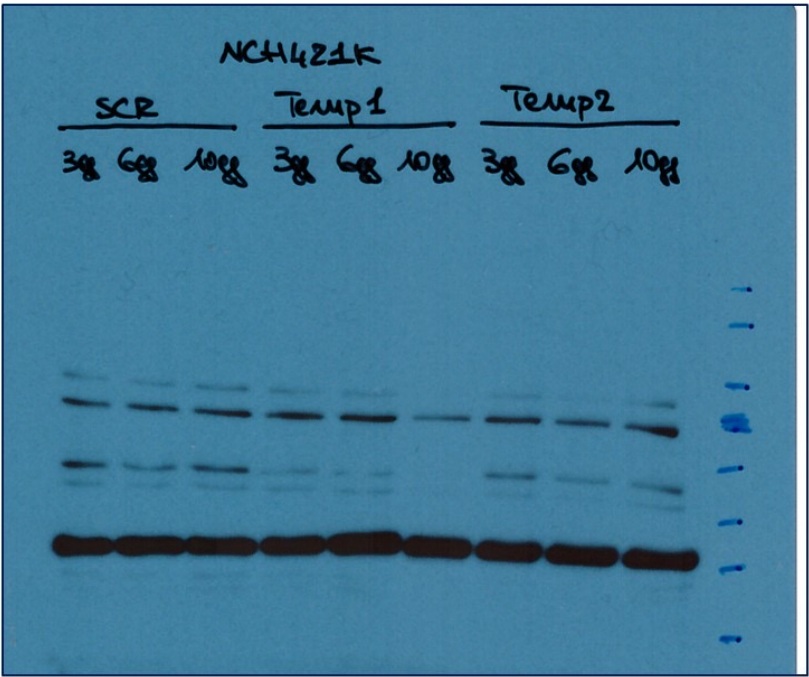
A



B



ORIGINAL BLOT FIG. 5



ORIGINAL BLOT FIG. 6

PKA R2A



GAPDH

