

Fig.2 For cell collection



Fig.5B, KHF4,
KHF5, 76-118

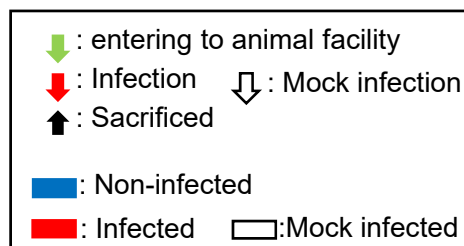


Fig.3 For body weight measurement, Fig. 3A

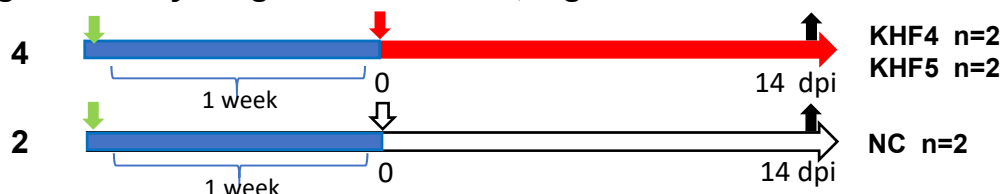


Fig.4 & Fig.7 tissues (viral RNA, N protein), blood and urine

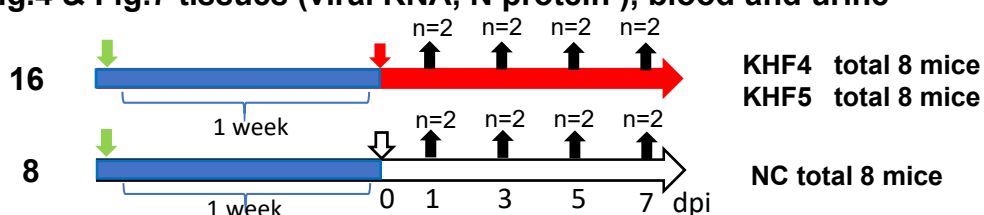


Fig.5 Lung tissue infection

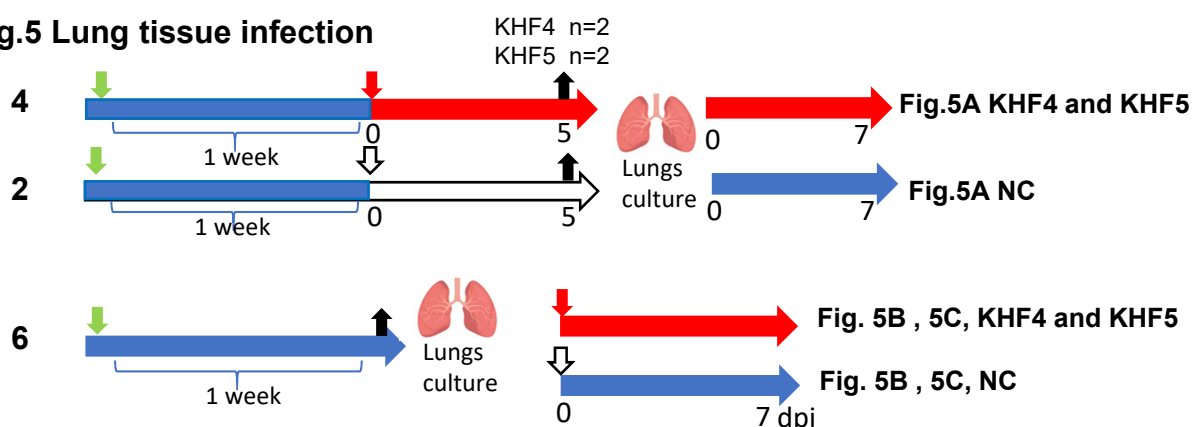


Fig.6 For Immunohistochemistry and Fig. 3B

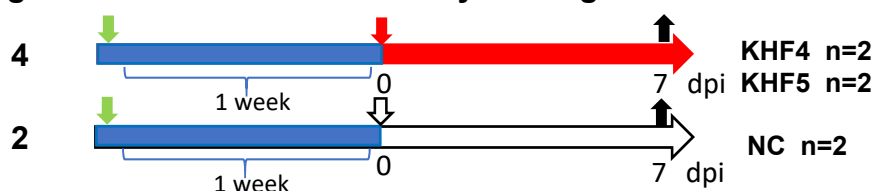
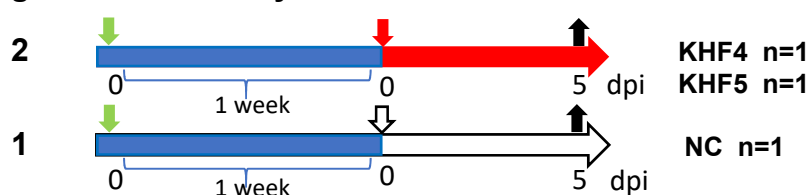


Fig.8 For microarray



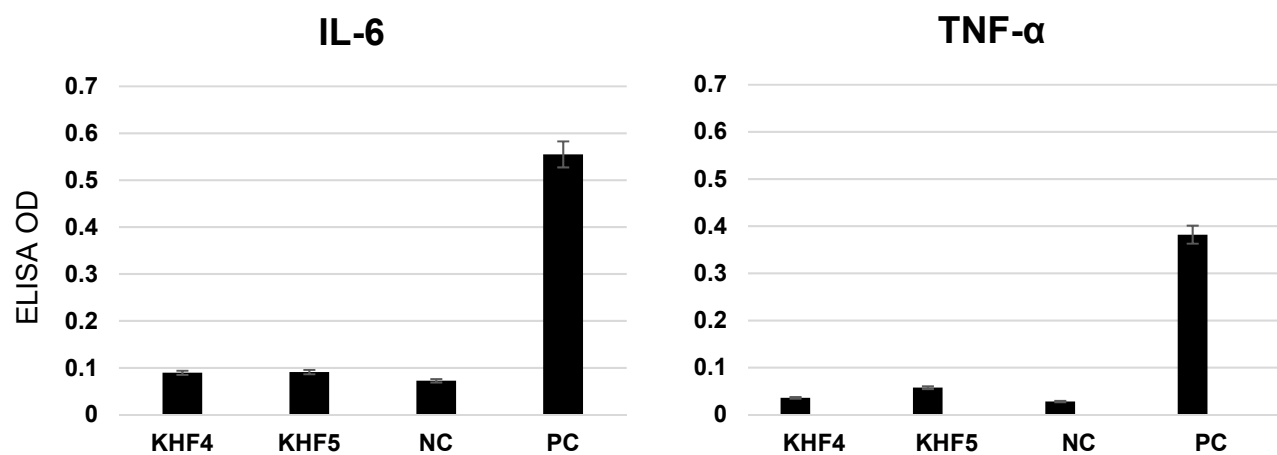
Supplementary Figure S1 Outline of animal experimentation

A total of 55 female BALB/c mice, 4-weeks old were purchased and used in this research.

Mouse ID	N protein /GAPDH	
	Lung	Liver
KHF4 #1	0.13	1.12
KHF4 #2	0.44	1.11
KHF5 #1	1.95	1.73
KHF5 #2	1.67	2.17
NC #1	0.00	0.04
NC #2	0.02	0.05

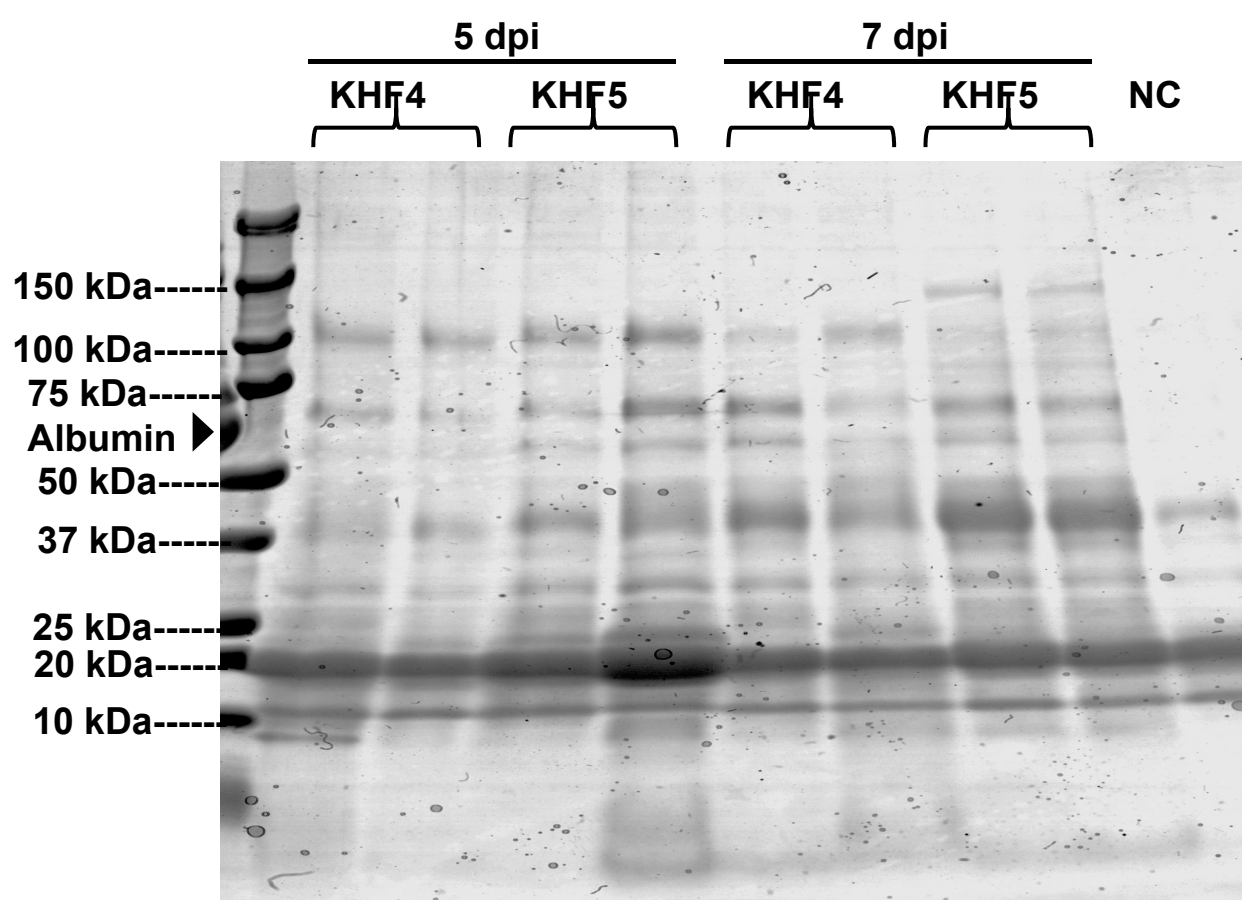
Supplementary Table S1 Comparison of N protein production in lung and liver

Western blot images of lung and liver shown in Fig. 4B were quantified by Fiji/ImageJ software. Ratio of N protein to GAPDH was estimated in liver and lung tissues.

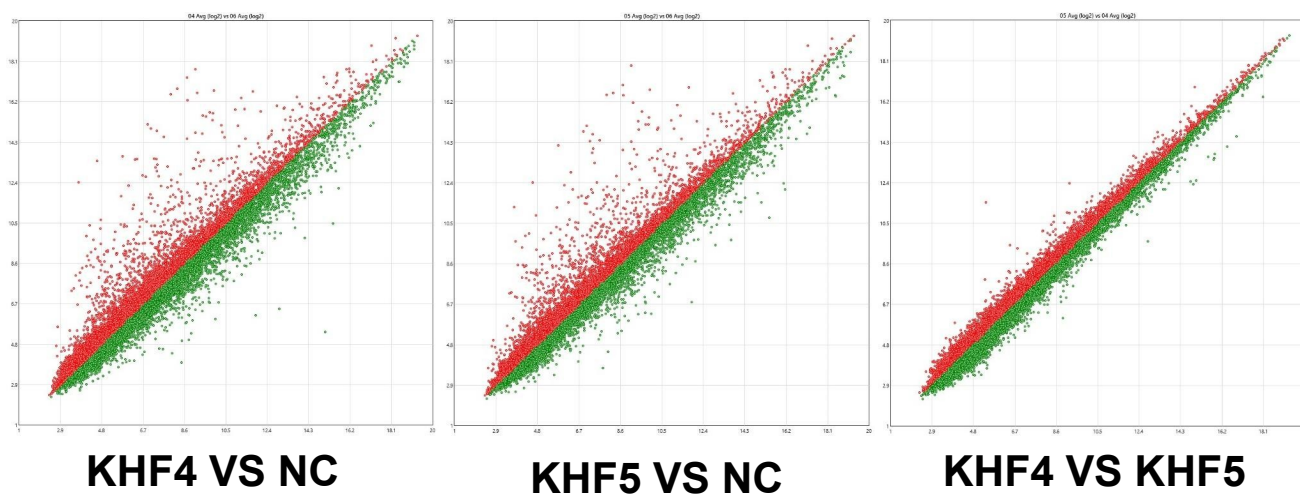


Supplementary Figure S2 Detection of IL-6 and TNF-alpha in sera

Sera were obtained from KHF4, KHF5, and mock infected mice (n=2). Sera were examined at 1:3 dilutions. Positive control IL-6 (333.3 pg/ml) and of TNF-alpha (187.5 pg /mL) were used. All test were performed in duplicate.



Supplementary Figure S3 Urinary protein analysis by SDS-PAGE



Supplementary Figure S4 Liver gene expression profiling by microarray