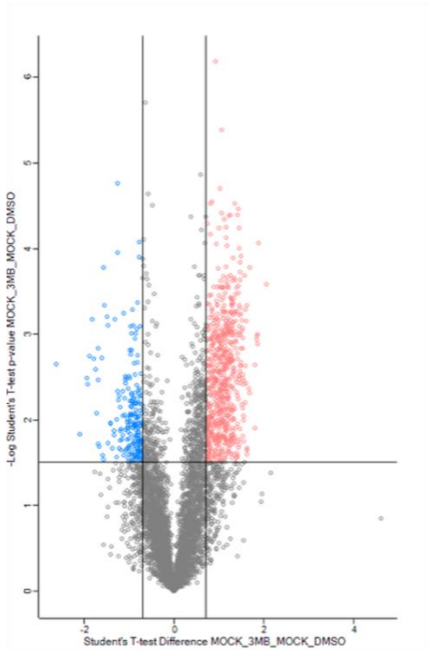
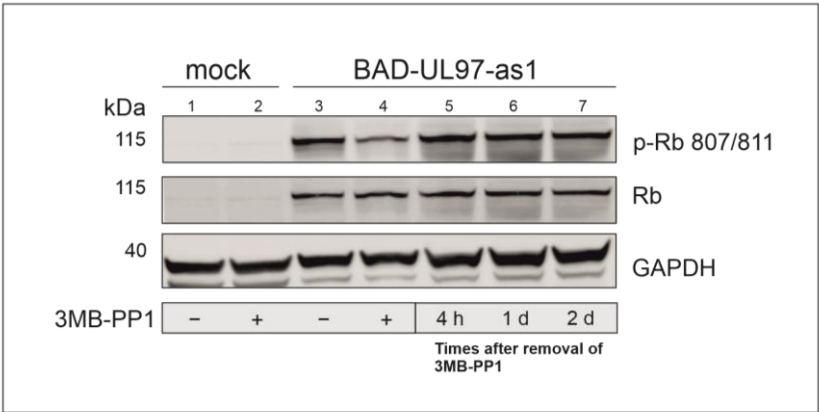


Supplementary Materials:

Supplemental Figure S1. Vulcano plot illustrating differentially abundant proteins of cells treated with 3MB-PP1 treatment. The $-\log_{10}$ T-test P value is plotted against the \log_2 (fold change: 3MB-PP1/untreated). The non-axial vertical lines denote ± 0.7 -fold change while the non-axial horizontal line denotes $P = 0.05$. Protein names are listed in Supplemental Table S1.



Supplemental Figure S2. Reversible effect of 3MB-PP1 treatment. HFFs were infected with the HCMV laboratory strain BAD-UL97-as1 (4 genomes/cell) and 3MB-PP1 was added at 3 days post infection. After 4h, the inhibitor was removed by exchanging the medium. Lines 4-7 represent the phosphorylation level of Rb S807/811at different time points after the removal of the inhibitor.



Supplemental Figure S3. Dose-dependent effect of 3MB-PP1 on pUL97-as1.

HFFs were infected with the HCMV laboratory strains BADwt or BAD-UL97-as1 (4 genomes/cell) and different concentrations of 3MB-PP1 were added at the time of infection.

Cells were harvested after 5 days and phosphorylation levels of Rb were analyzed.

