

Figure S1. Geographical locations of the origin of the Czech (CZ) and Hungarian (HU) samples. The Czech samples were collected from private orchards in the South Bohemian Region. Samples from productive orchards and germplasm collection were taken in the Hradec Králové Region.

Productive orchards were sampled at Zalaszentő, Tamási, Soroksár, Vámosmikola, Újfehértó, Olcsvaapáti, and four more locations at Nyirseg, while certified stock collections are located at Erd, Soroksár and Újfehértó (isolator houses are present only at Újfehértó). Biotest were carried out at Velence on a Virology Station of NEBIH.

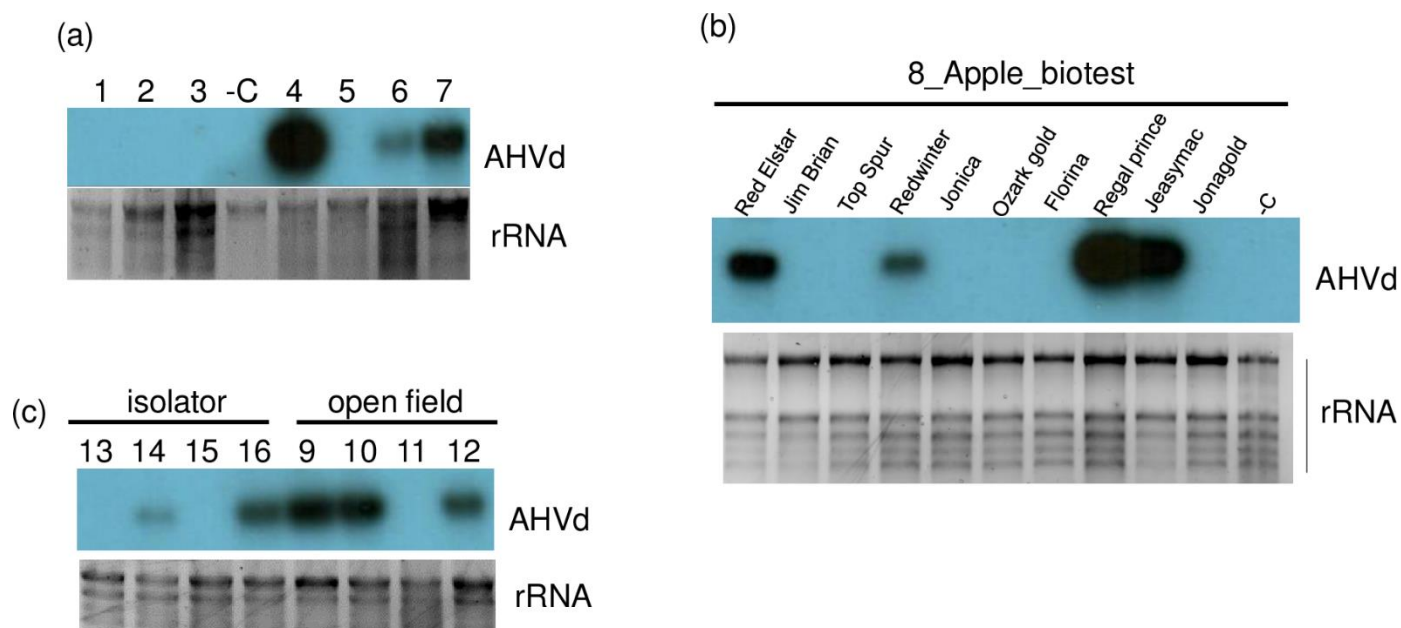


Figure S2. Northern blot validation of the sRNA HTS for presence of AHVd using AHVd specific radiolabelled probe (a) in libraries 1-7, (b) in individuals in 8_Apple_biotest library) and (c) in libraries 13-16. -C is a negative control.



Figure S3. Photo of the Florina cultivar at Erd (Hungary), infected with CCGaV.



Figure S4. Multiple nucleotide alignment of the ALV-1 isolates. The PA8 isolate is used as the reference. Putative INDEL events are annotated as green/red boxes. There were five variants of the putative ORF5a that differed in length (24 nt – 327 nt). In addition, the Gloster isolate of ALV-1 had abolished start codon, annotated with an asterisk.

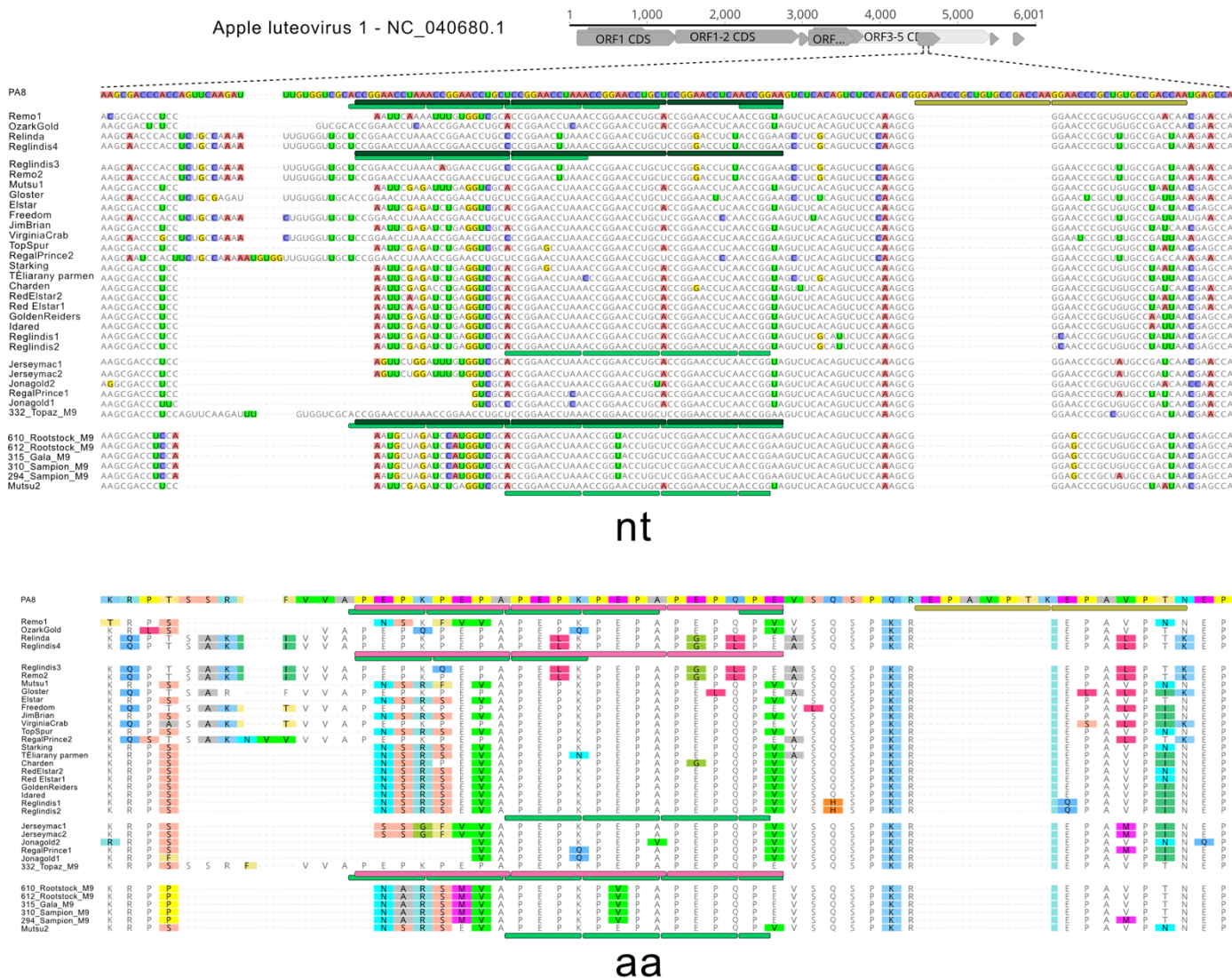


Figure S5. Multiple nucleotide alignment of the ORF5 region of the ALV-1 isolates with identified tandem repeats. The PA8 isolate is used as the reference. Deduced aminoacid sequences are shown in a lower part of the figure. Gaps are shown as dashes.

	1	2	3	4	5	6	7	8
1 ON593788, Artemisz HU	99	98	98	98	98	98	96	
2 ON593783, Golden HU		98	99	98	98	98	96	
3 ON593787, Florina HU			99	99	99	99	96	
4 ON593785, Reglindis HU				99	99	99	96	
5 ON593784, Jonagold HU					99	99	96	
6 CCGaV; M9 644, CZ						99	96	
7 MH038042.1, AC1, USA							96	
8 KX960112, CGW2, IT								96

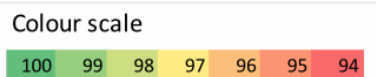


Figure S6. Shared nucleotide identity in a 1193 nt long part of polymerase gene between CCGaV isolates. The Italian isolate CGW2 had a citrus host, while others have been isolated from apple hosts.

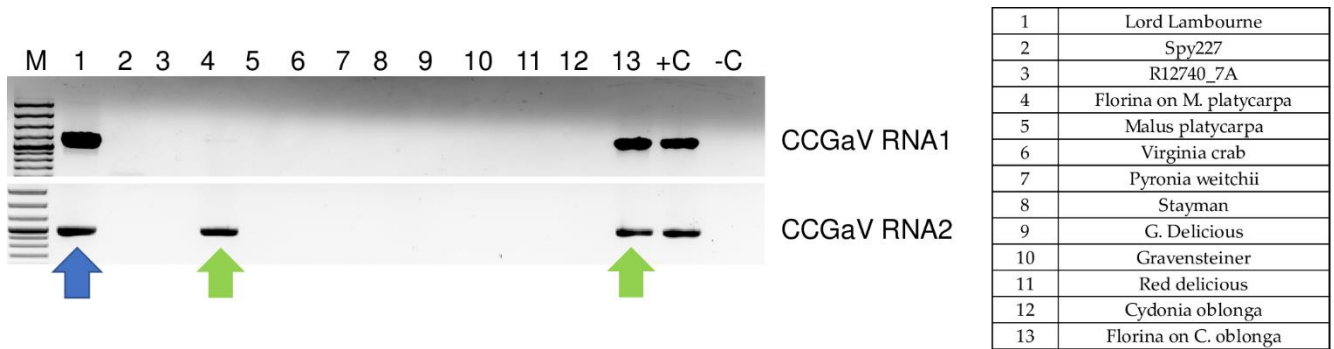


Figure S7. RT-PCR test of the indicators used for biotest of Florina cultivar for the presence of CCGaV RNA1 and RNA2. Blue arrows show results in the indicators, green arrows show results for the original cultivar sprouted during the biotest.