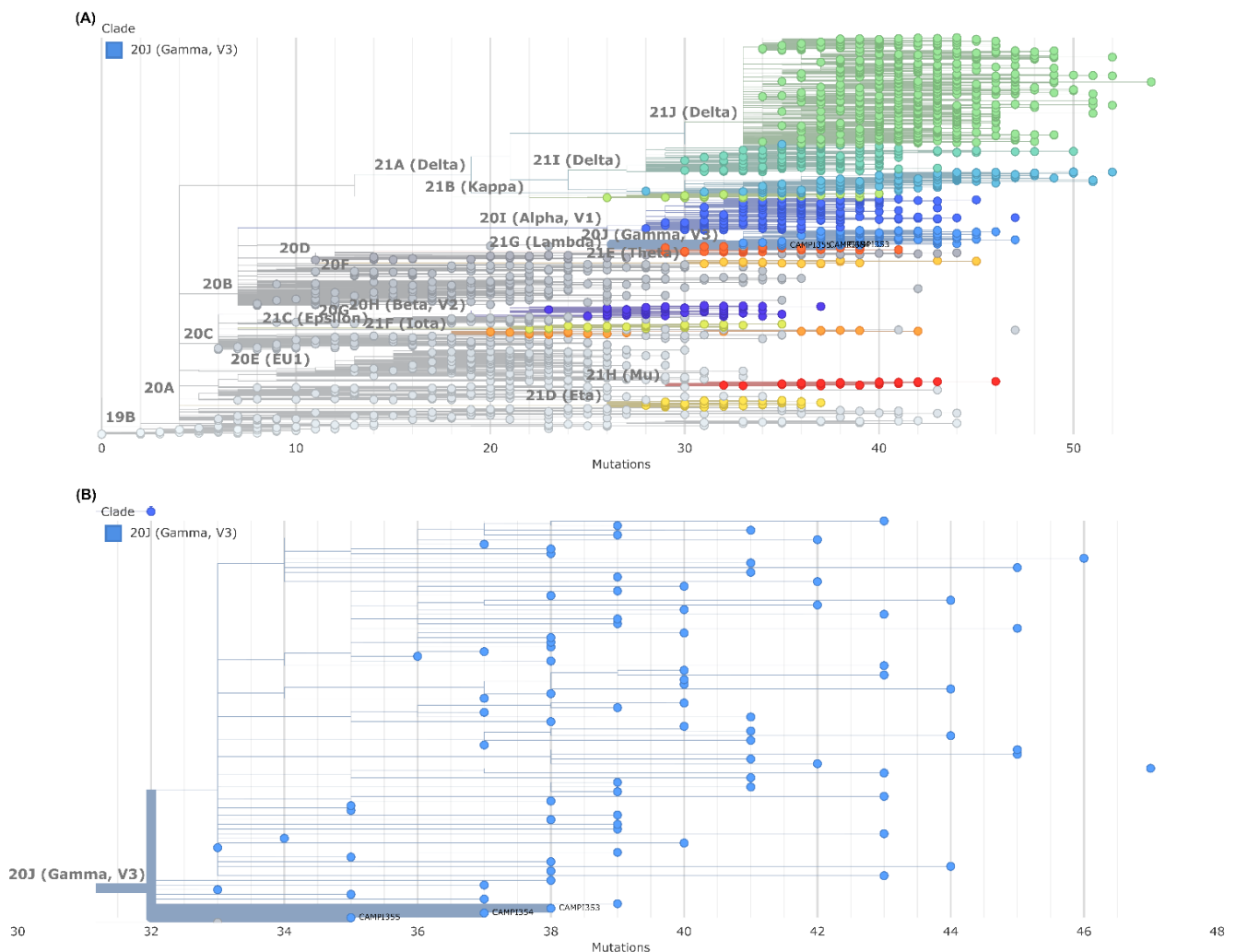


Supplementary Materials

# Clearance of Persistent SARS-CoV-2 RNA Detection in a NFκB-Deficient Patient in Association with the Ingestion of Human Breast Milk: A Case Report

Janine S. Sabino <sup>1,†</sup>, Mariene R. Amorim <sup>2,†</sup>, William M. de Souza <sup>3,†</sup>, Lia F. Marega <sup>1</sup>, Luciana S. Mofatto <sup>2</sup>, Daniel A. Toledo-Teixeira <sup>2</sup>, Julia Forato <sup>2</sup>, Rodrigo G. Stabeli <sup>4,5</sup>, Maria Laura Costa <sup>6</sup>, Fernando R. Spilki <sup>7</sup>, Ester C. Sabino <sup>8,9</sup>, Nuno R. Faria <sup>9,10,11</sup>, Bruno D. Benites <sup>12</sup>, Marcelo Addas-Carvalho <sup>12</sup>, Raquel S. B. Stucchi <sup>13</sup>, Dewton M. Vasconcelos <sup>14</sup>, Scott C. Weaver <sup>3,15</sup>, Fabiana Granja <sup>2,16,†</sup>, José Luiz Proenca-Modena <sup>2,17,18,\*,†</sup> and Maria Marluce dos S. Vilela <sup>1,\*,†</sup>



**Figure S1.** Maximum-likelihood phylogenetic analysis using NextStrain (Auspice tool(17). (A) Phylogenetic tree including clades related with 20J (Gamma V3). (B) The phylogenetic analysis shows the three SARS-CoV-2 genomes sequences from the proband (i.e., CAMPI353, CAMPI354 and CAMPI355) in the clade 20J (Gamma, V3).

**Table S1.** Mutation signatures of Gamma (PANGO P.1 lineage or NextStrain clade 20J) from genome sequencing of SARS-CoV-2.

Amino Acid	Protein	Position	CAMPI353 *	CAMPI354 *	CAMPI355 *
aa	ORF1A	S1188L	confirmed	confirmed	confirmed
aa	ORF1A	K1795Q	confirmed	confirmed	confirmed
deletion	ORF1A	del3675/3677	confirmed	confirmed	confirmed
aa	ORF1B	P314L	confirmed	confirmed	confirmed
aa	ORF1B	E1264D	confirmed	confirmed	confirmed
aa	S	L18F	confirmed	confirmed	confirmed
aa	S	T20N	confirmed	confirmed	confirmed
aa	S	P26S	confirmed	confirmed	confirmed
aa	S	D138Y	confirmed	confirmed	confirmed
aa	S	R190S	confirmed	confirmed	undetermined
aa	S	K417T	confirmed	confirmed	confirmed
aa	S	E484K	undetermined	undetermined	undetermined
aa	S	N501Y	undetermined	undetermined	undetermined
aa	S	D614G	confirmed	confirmed	confirmed
aa	S	H655Y	confirmed	confirmed	confirmed
aa	S	T1027I	confirmed	confirmed	undetermined
aa	S	V1176F	confirmed	confirmed	confirmed
aa	ORF3A	G174C	undetermined	undetermined	undetermined
aa	ORF3A	S253P	undetermined	confirmed	undetermined
aa	ORF8	S84L	absence	absence	absence
aa	ORF8	E92K	confirmed	confirmed	confirmed
aa	N	P80R	confirmed	confirmed	confirmed
aa	N	R203K	confirmed	confirmed	confirmed
aa	N	G204R	confirmed	confirmed	confirmed
aa	NSP3	S370L	confirmed	confirmed	confirmed
aa	NSP3	K977Q	confirmed	confirmed	confirmed
aa	NSP3	S1735F	undetermined	undetermined	undetermined
aa	NSP6	L260F	undetermined	undetermined	undetermined
deletion	NSP6	del106/108	confirmed	confirmed	confirmed
aa	NSP12	P323L	confirmed	confirmed	confirmed
aa	NSP13	E341D	confirmed	confirmed	confirmed

\* sequences are available on GISAID (accession number: EPI\_ISL\_6513196, EPI\_ISL\_6513480, and EPI\_ISL\_6513725; <https://www.gisaid.org>). The coding regions are those annotated on Wuhan-Hu-1 (GenBank accession number: NC\_045512).

**Table S2.** Immunophenotyping of our patient.

Cell Types	19 May 2021	12 July 2021	Ref. Values
CD3/mm <sup>3</sup> (%)	849 (88.4)	2673 (91.55)	849.1–1963.3
CD4/mm <sup>3</sup> (%)	234 (27.6)	612 (20.95)	477.5–1140.8
CD8/mm <sup>3</sup> (%)	466 (54.95)	1909 (65.38)	211.7–724.6
CD4/CD8	0.50	0.32	1.2–4.5
CD19/mm <sup>3</sup> (%)	7 (0.7)	0.0	124.2–415.9
CD16 <sup>+</sup> CD56/mm <sup>3</sup>	107 (11.1)	158 (5.41)	137–567.8
CD3/CD16 <sup>+</sup> CD56/mm <sup>3</sup>	65 (7.6)	N/P	137–567.8
TCRab <sup>+</sup> CD3 <sup>+</sup>	760 (89.5)	N/P	-
TCRab <sup>+</sup> CD3 <sup>+</sup> CD4 <sup>+</sup> CD8 <sup>-</sup> /mm <sup>3</sup>	22 (2.9)	N/P	<1.5%
CD4 <sup>+</sup> CD45RA <sup>+</sup>	N/P	112 (3.83)	137.8–574.5
CD4 <sup>+</sup> CD45RO <sup>+</sup>	N/P	394 (13.50)	-
CD45 <sup>+</sup> RA <sup>+</sup>	N/P	1282 (43.90)	-
CD45 <sup>+</sup> RO <sup>+</sup>	N/P	1413 (48.40)	-

Legend: N/P, not performed.

**Table S3.** C-reactive protein and ferritin values.

Parameters	19 May 2021	27 May 2021	7 June 2021	22 July 2021	Ref. Values
C-reactive protein (mg/dL)	41.2	1.7	2.0	2.0	<0.5
Ferritin (mg/L)	1464.0	918.7	728.4		30.0–400.0