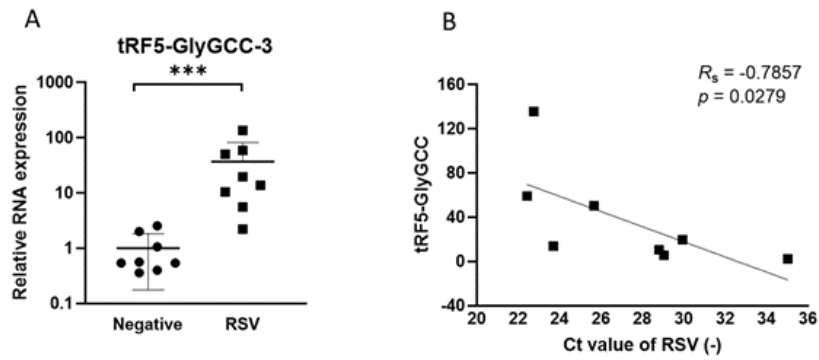
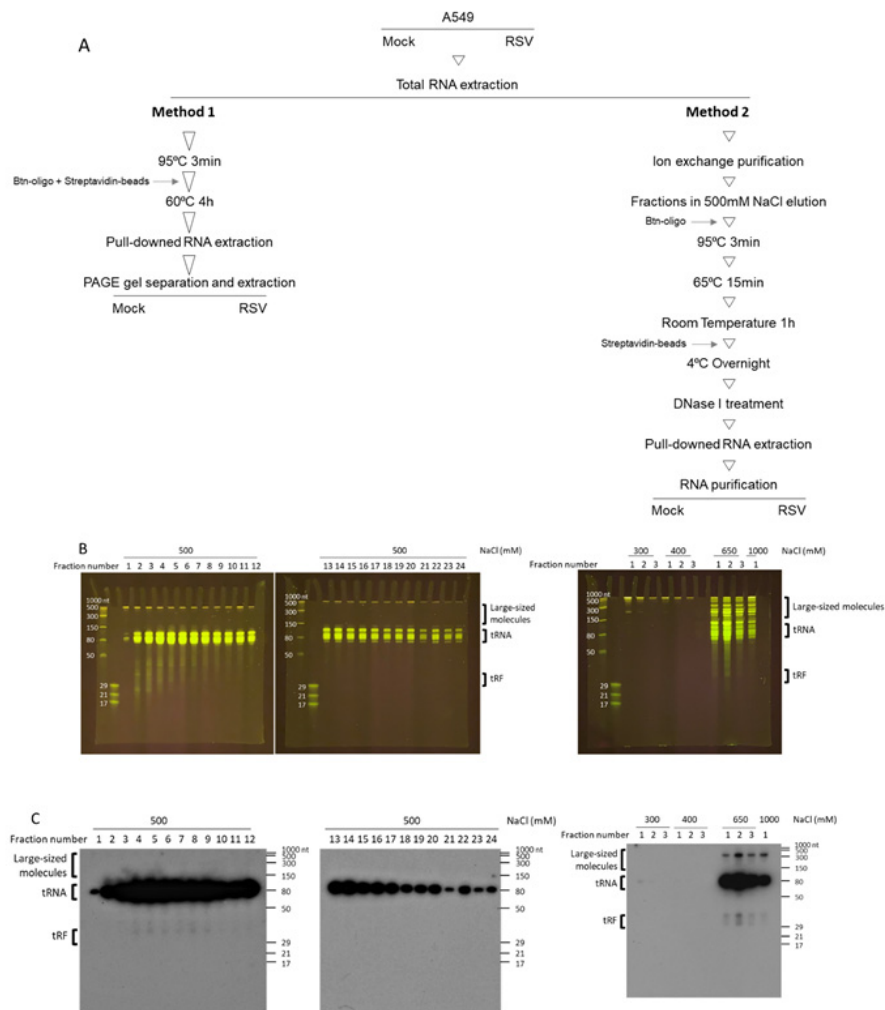


tRNA-GlyGCC-3 5' -GCAUUGGUGGUUCAGUGGUAGAAUUCUCG-3'



Supplementary Figure S1 RSV infection affects the expression of tRF5-GlyGCC-3. (A) qRT-PCR was performed to detect tRF5-GlyGCC-3 in the NPS from RSV and CN patients. An unpaired two-tailed Mann-Whitney U test was used to compare two independent groups. Triple asterisks represents a p -value of <0.001 . (B) The expression of tRF5-GlyGCC-3 correlated with RSV genome copies. We performed Spearman's rank correlation test. Spearman's rank correlation coefficient (R_s) was used to determine correlations. A p -value of less than 0.05 was considered significant.



Supplementary Figure S2 Additional tRNA purification methods. **(A)** Two alternate workflows to purify tRNA -GluCTC. **(B-C)**. The RNAs loaded in ion exchange column were eluted with different concentrations of NaCl. The eluted RNA fractions were loaded to the 15% denaturing polyacrylamide gel with 7 mol/l urea, followed by SYBRTM Green II RNA staining **(B)** or transferring to a positively charged nylon membrane for Northern blot using a ^{32}P -labeled DNA probe reversely complementary to the tRNA of interest in UL-TRAhyb-Oligo solution **(C)**.