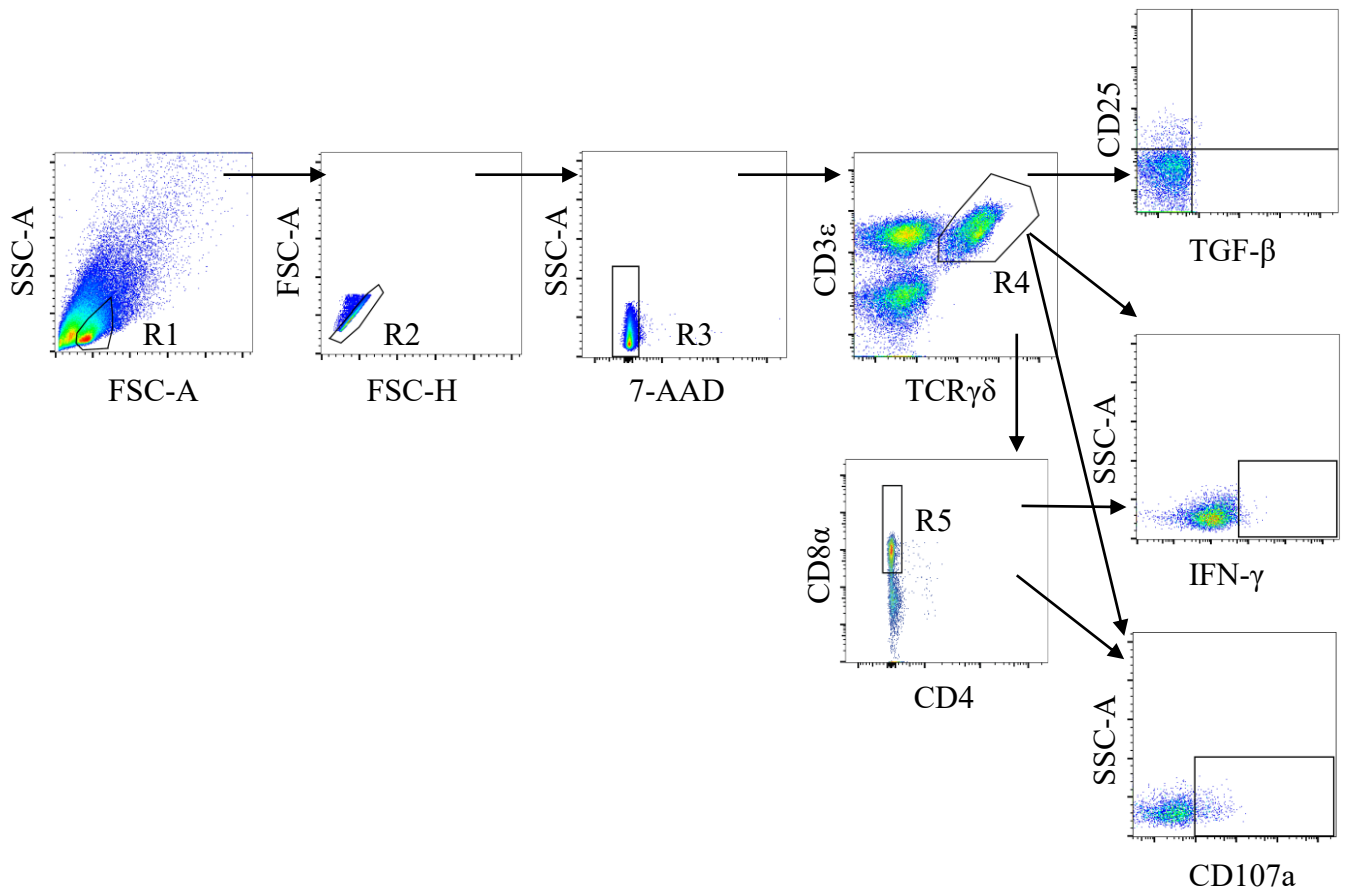


Activated chicken gamma delta T cells are involved in protective immunity against Marek's disease
Ayumi Matsuyama-Kato, Bahram Shojadoost, Nitish Boodhoo, Sugandha Raj, Mohammadali Alizadeh, Fatemeh Fazel, Charlotte Fletcher, Jiayu Zheng, Bhavya Gupta, Mohamed Faizal Abdul-Careem, Brandon L. Plattner, Shahriar Behboudi, and Shayan Sharif



Supplementary Figure

Representative gating strategy is shown for defining IFN- γ^+ $\gamma\delta$ T cells, TGF- β^+ $\gamma\delta$ T cells, and CD107a $^+$ $\gamma\delta$ T cells in live mononuclear cells by 7-AAD exclusion from the control, the TCR $\gamma\delta^-$ /MDV $^-$, the TCR $\gamma\delta^+$ /MDV $^-$, the MDV $^+$, the TCR $\gamma\delta^-$ /MDV $^+$, and the TCR $\gamma\delta^+$ /MDV $^+$ groups (spleen at 4 dpi).