

Supplementary Materials

Plant-Produced Chimeric Hepatitis E Virus-Like Particles as Carriers for Antigen Presentation

Eugenia S. Mardanova, Egor A. Vasyagin, Kira G. Kotova, Gergana G. Zahmanova, Nikolai V. Ravin

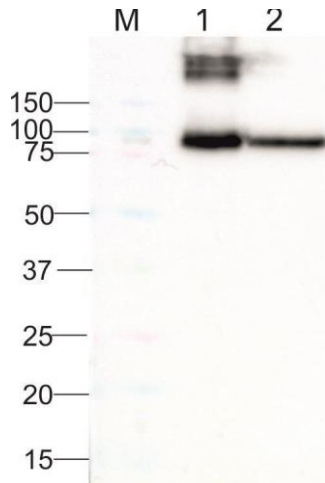


Figure S1. Solubility analysis of HEV/GFP protein expressed in *N. benthamiana* plants. Western blotting with antibodies against GFP. M, molecular weight marker (kD); 1, total proteins isolated from leaf infiltrated with pEff_HEV/GFP; 2, total soluble proteins isolated from leaf infiltrated with pEff_HEV/GFP.

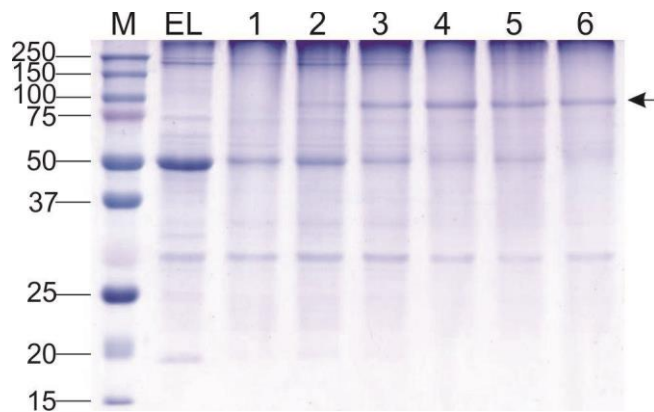


Figure S2. Expression of HEV/GFP protein in *N. benthamiana* plants on different days post infiltration. Coomassie brilliant blue-stained gel of proteins isolated from plants. M, molecular weight marker (kD); EL, total proteins isolated from non-infiltrated leaf; Lanes: 1–6, total proteins isolated from leaves infiltrated with pEff_HEV/GFP in 1–6 dpi, respectively. Position of HEV/GFP protein is shown by an arrow.

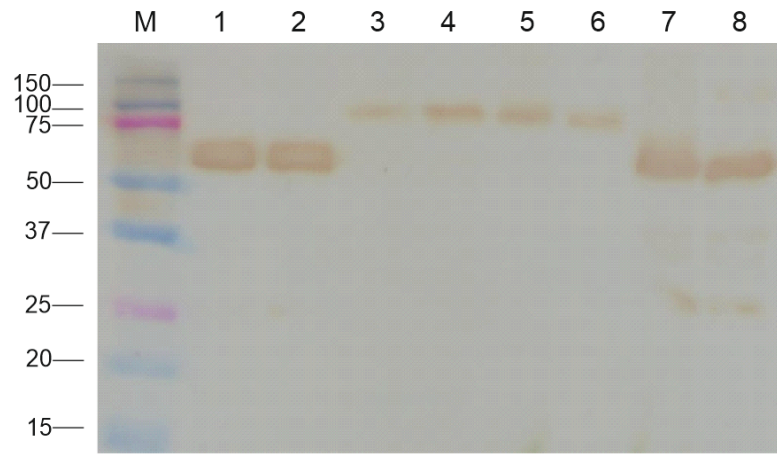


Figure S3. Expression and solubility analysis of HEV/4M2e protein expressed in *N. benthamiana* plants. Western blotting with antibodies against hexahistidine tag. M, molecular weight marker (kD); 1 and 2, soluble and total proteins isolated from leaf infiltrated with pAeff_HEV; 3 and 4, soluble fraction and total proteins isolated from leaf infiltrated with pAeff_HEV/4M2e; 5 and 6, soluble fraction and total proteins isolated from leaf infiltrated with pEff_HEV/4M2e; 7 and 8, soluble fraction and total proteins isolated from leaf infiltrated with pEff_HEV.

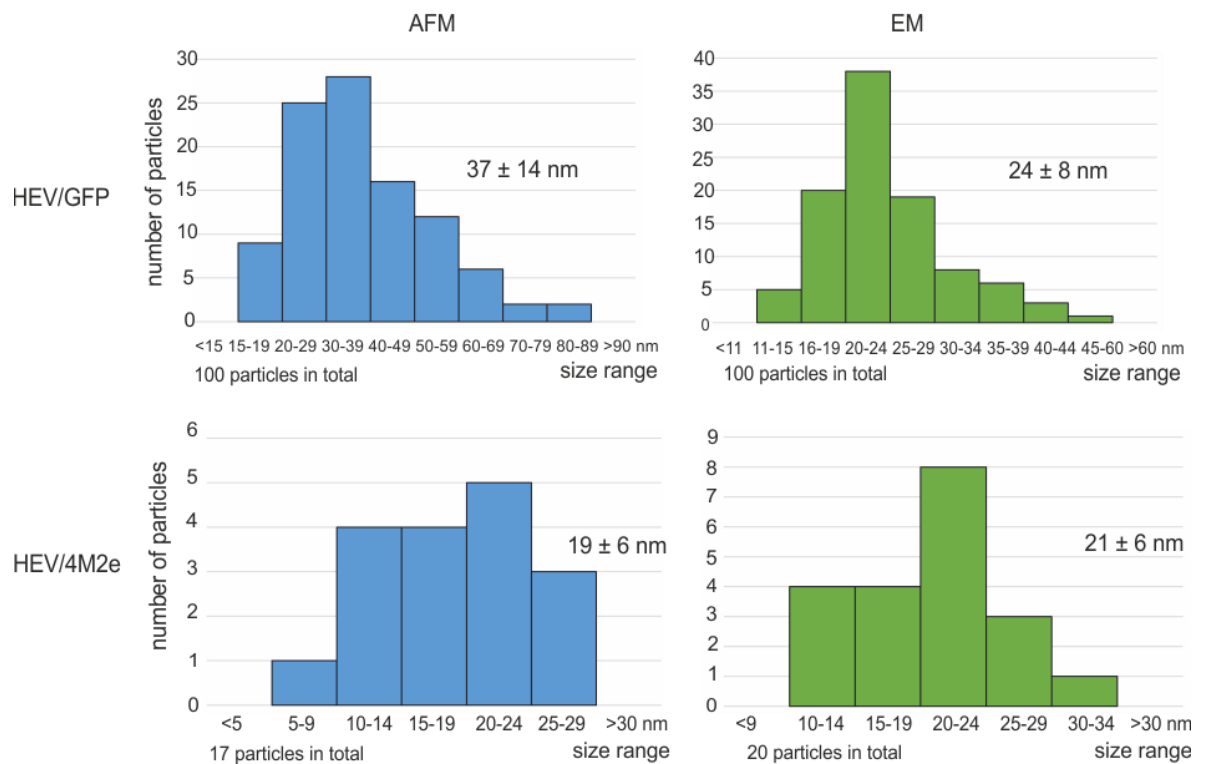


Figure S4. HEV/GFP and HEV/4M2e particle size distribution. The data were obtained using the atomic force microscopy (AFM) and transmission electron microscopy (EM) images. Mean \pm standard deviation values are shown.

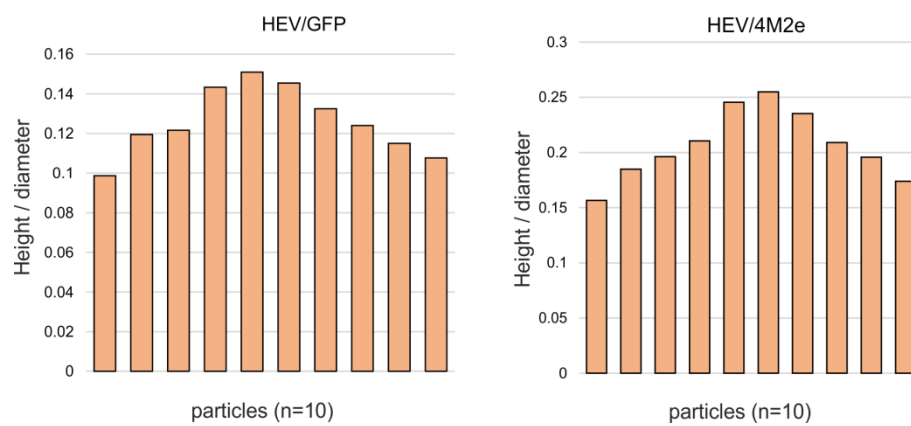


Figure S5. HEV/GFP and HEV/4M2e particle height to diameter ratio. The data are based on AFM images of 10 particles.