

# Supplementary Materials: Controlled Delivery of BET-PROTACs: In Vitro Evaluation of MZ1-loaded Polymeric Antibody Conjugated Nanoparticles in Breast Cancer

Francisco J. Cimas, Enrique Niza, Alberto Juan, María del Mar Noblejas-López, Iván Bravo, Agustín Lara-Sanchez, Carlos Alonso-Moreno and Alberto Ocaña

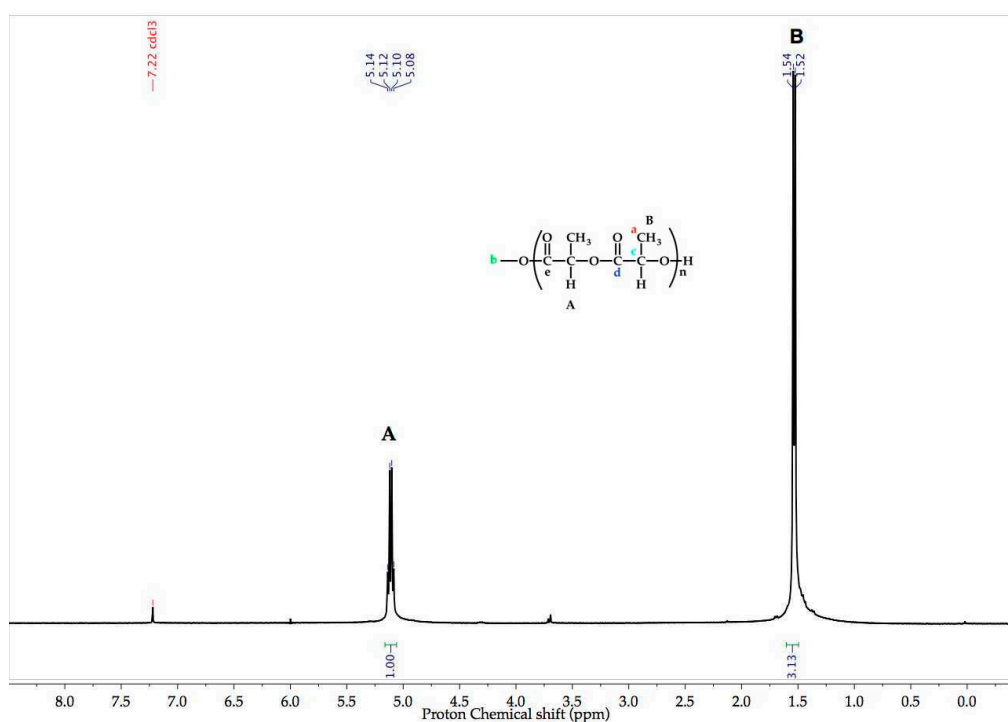


Figure S1. <sup>1</sup>H NMR of PLA.

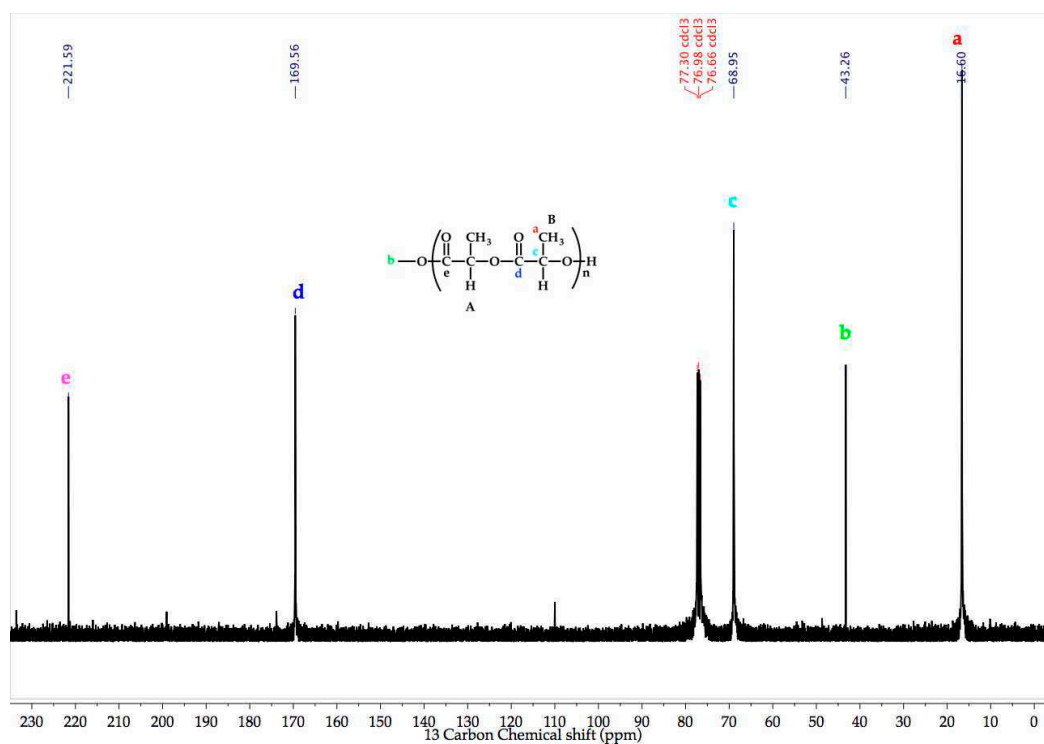


Figure S2.  $^{13}\text{C}\{^1\text{H}\}$  NMR of PLA.

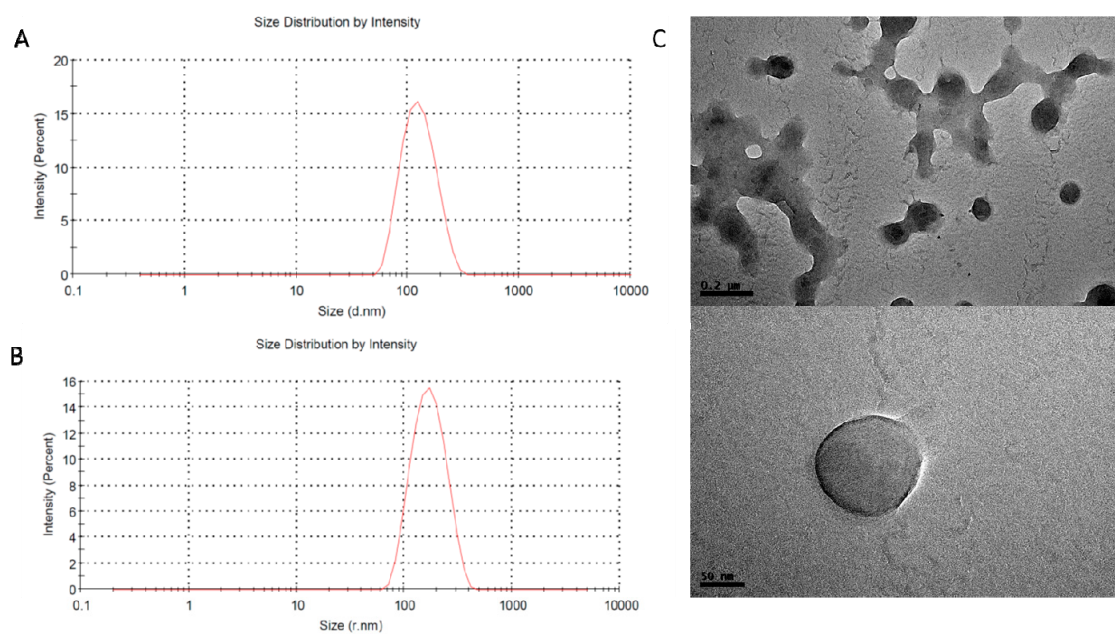


Figure S3. Size distribution curve for A) MZI-NPs, B) MZI-ACNPs and C) TEM images for MZI-NPs.

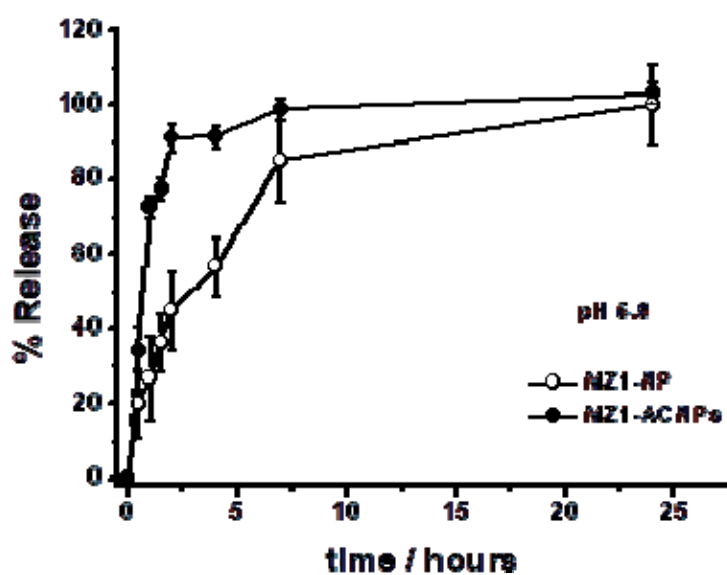


Figure S4. In vitro release profiles of MZ1-ACNPs at pH 5.8. Data are expressed as mean  $\pm$  s.e.m. from at least three independent experiments.

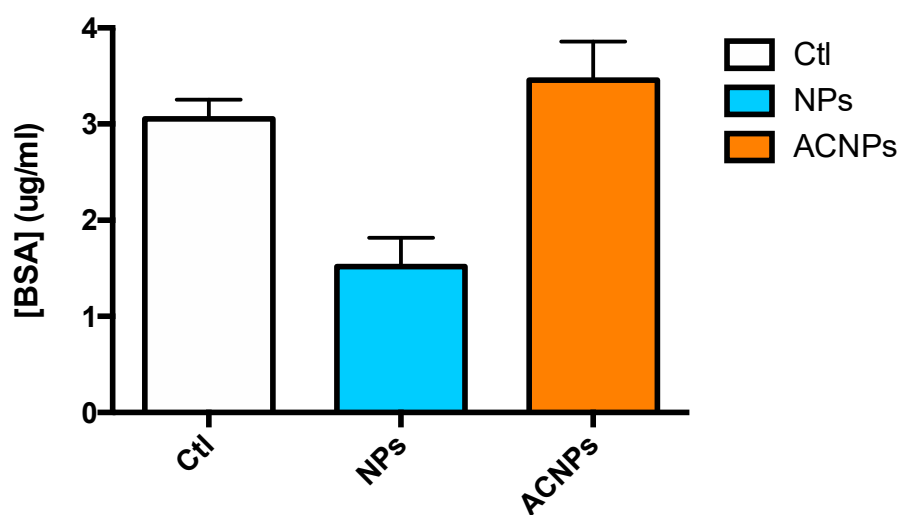


Figure 5. BCA analysis of protein corona formation. .