

Supplementary Materials: Lactoferrin Contributes a Renoprotective Effect in Acute Kidney Injury and Renal Fibrosis

Yung-Ho Hsu, I-Jen Chiu, Yuh-Feng Lin, Yi-Jie Chen, Yu-Hsuan Lee and Hui-Wen Chiu

Table S1. The identification of 62 overlay genes with 2-fold changes in the kidney tissues of AKI and CKD patients.

| | | | | | | |
|----------|-----------|---------|-------|--------|--------|---------|
| ADAM9 | C16orf89 | C2orf54 | C7 | CDH6 | CFI | CHI3L1 |
| COL14A1 | COPA | CR2 | DPT | EGF | ELF5 | ESRRB |
| FBXL21 | FGB | FTCD | GAD1 | GALM | GDF15 | GGT6 |
| HAVCR1 | HOXB8 | HSP90B1 | ITLN1 | KLK1 | KNG1 | LCN2 |
| LGSN | LINC00937 | LPP | LTF | LYZ | MET | MFAP5 |
| MT1E | MT1F | MT1M | NNMT | OGN | OLFM4 | OSMR |
| PAPPA | PTN | PVALB | REN | SEMA6D | SGK494 | SLC12A3 |
| SLC22A7 | SLC23A3 | SLC7A13 | SOST | SOX9 | STAT1 | TEF |
| TMEM106A | TPCN2 | TRPM3 | TRPM6 | USP2 | VCAM1 | |

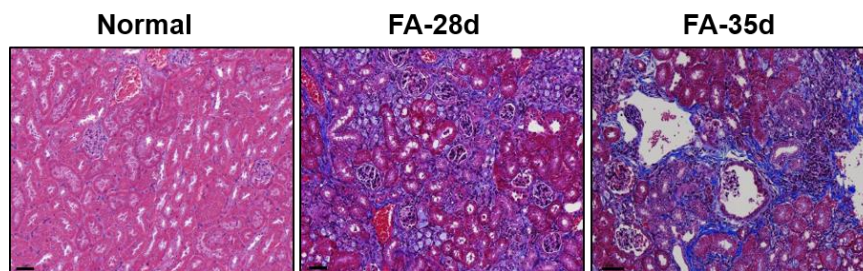


Figure S1. FA induces renal fibrosis. Representative kidney sections in mice were stained with Masson's trichrome staining and examined by microscopy. Scale bar = 60 μ m.

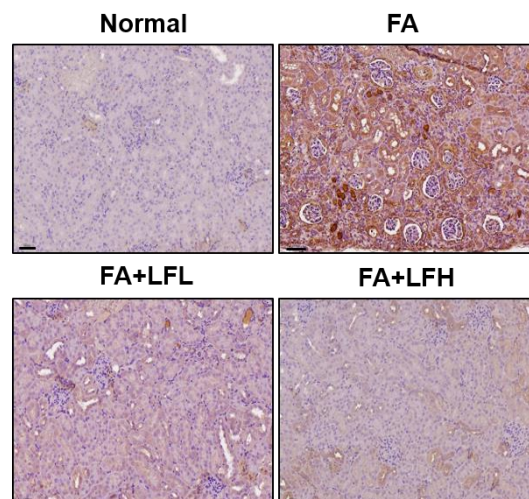


Figure S2. Immunohistochemistry (IHC) of fibrotic marker protein α -SMA in kidney of FA mouse model. The protein expression of α -SMA in the indicated groups of kidney sections. Scale bar = 60 μ m.