



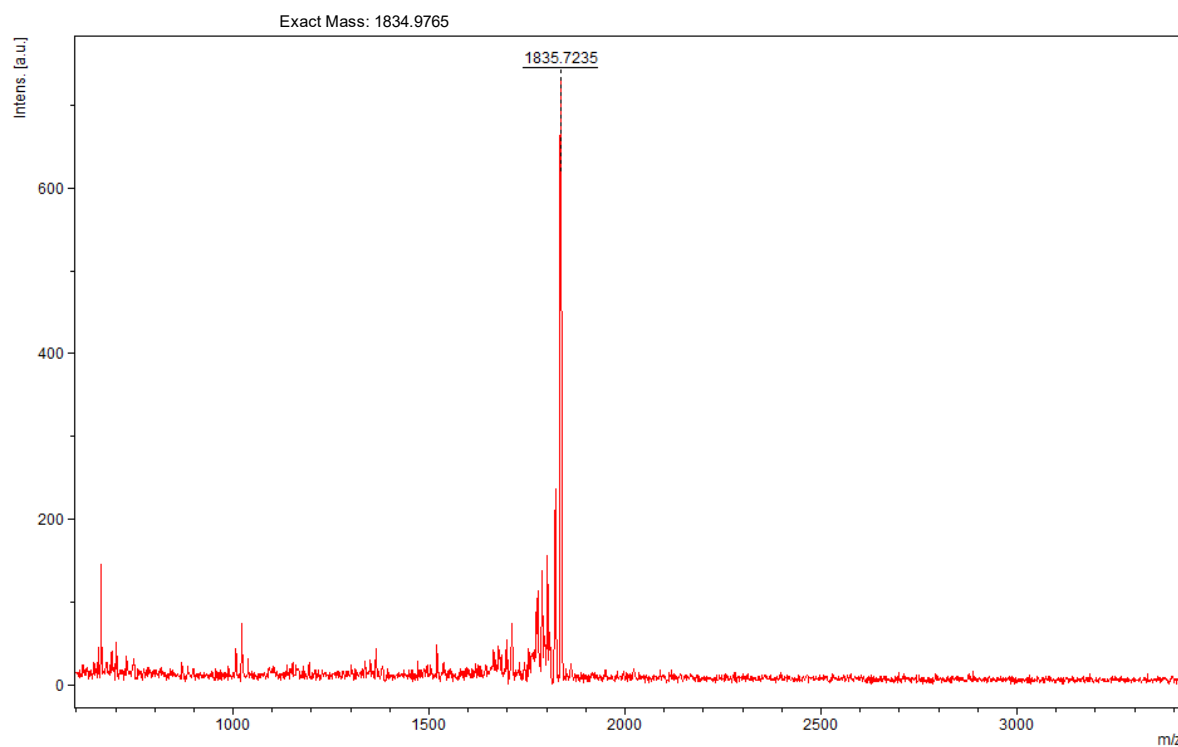
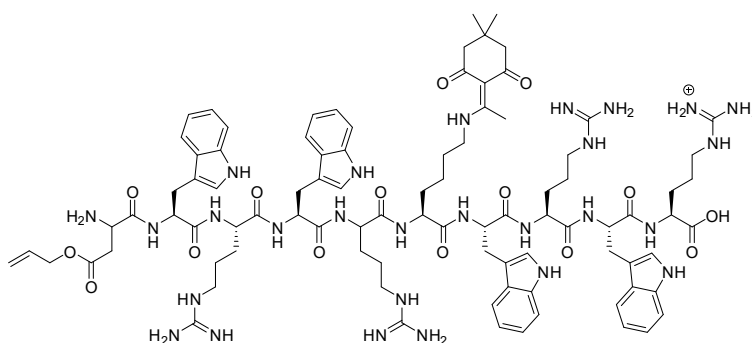
Supplementary Materials: Click-Free Synthesis of a Multivalent Tricyclic Peptide as a Molecular Transporter

Sumit Kumar, Dindyal Mandal, Shaima Ahmed El-Mowafi, Saghar Mozaffari, Rakesh Kumar Tiwari and Keykavous Parang

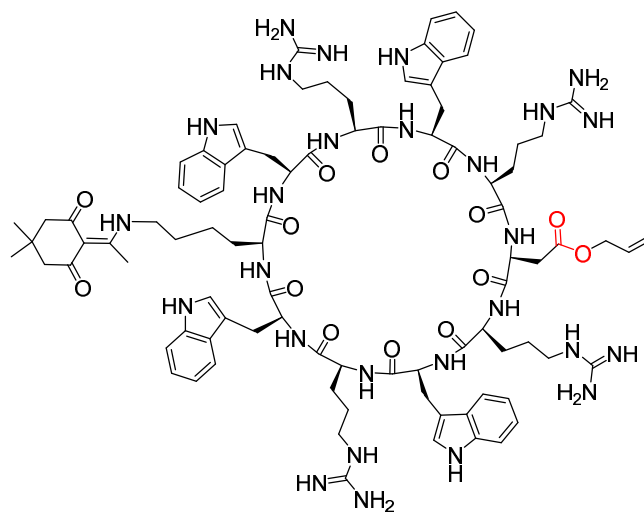
Content

Representative MALDI Spectra and HPLC of Intermediate and Synthesized Compounds (Page 3-15).

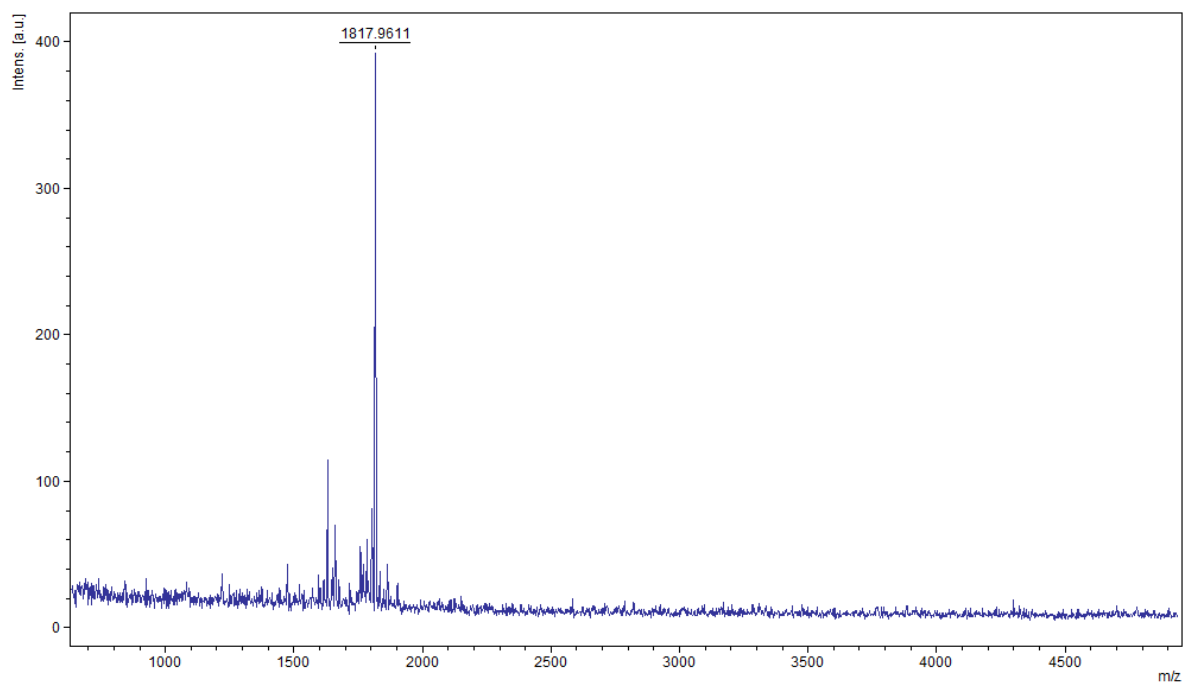
Peptide #2



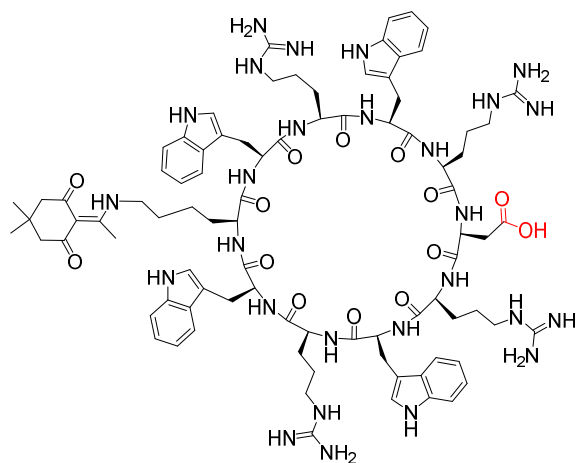
Peptide #3



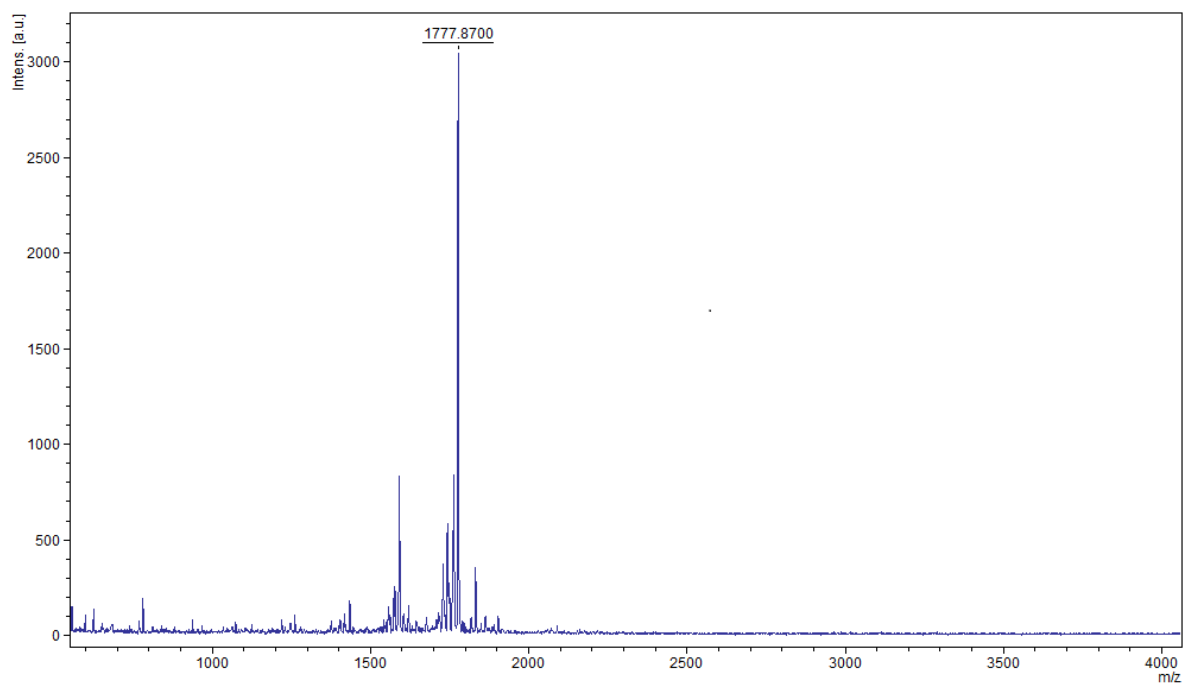
Exact Mass: 1815.9586



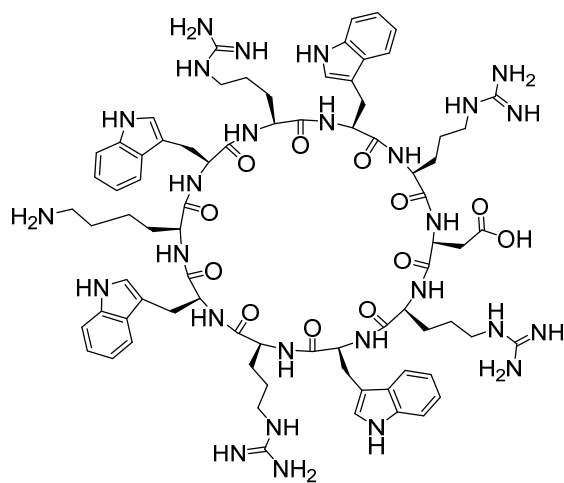
Peptide #4



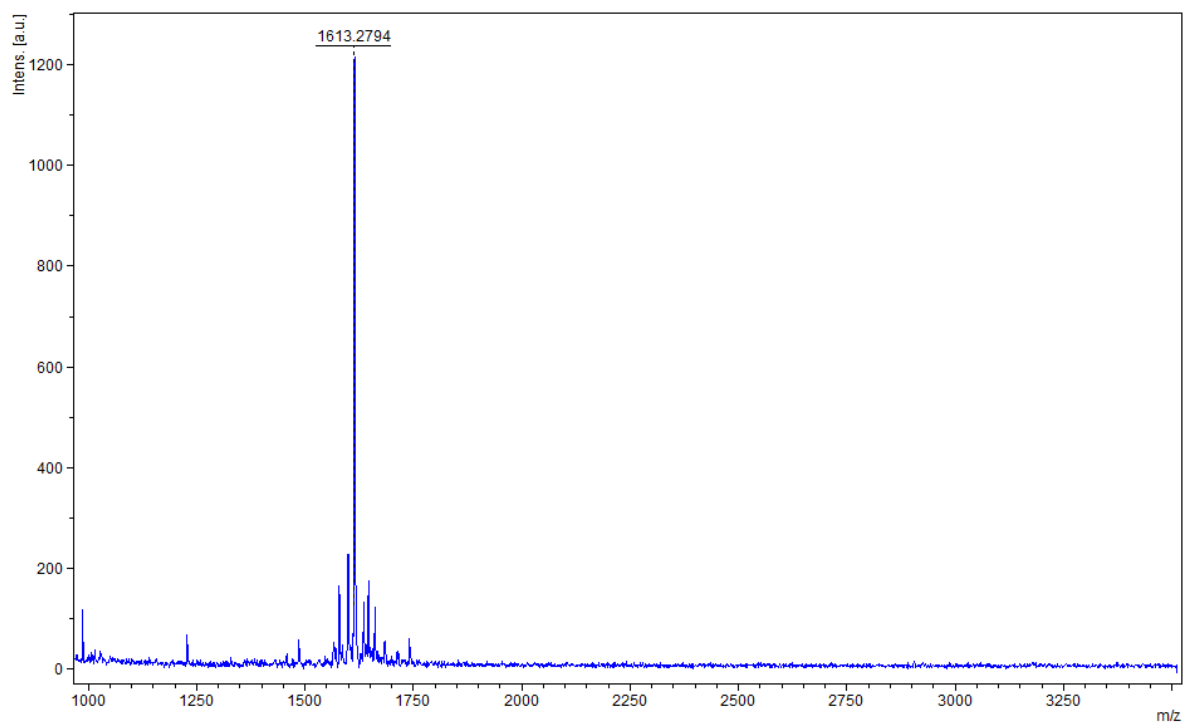
Exact Mass: 1775.9273



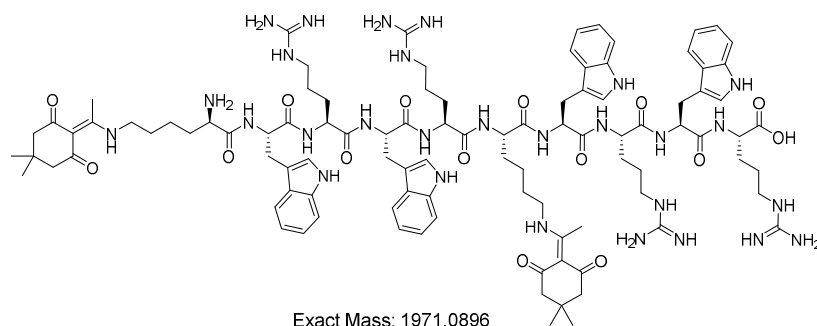
Peptide #7



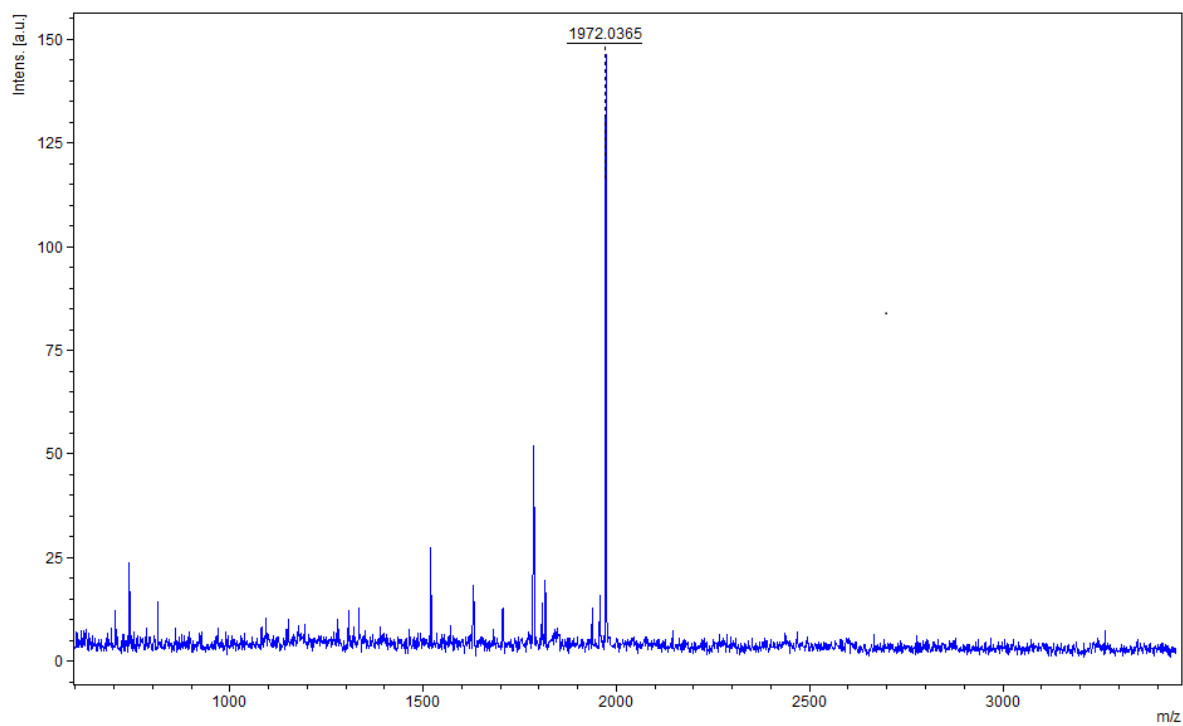
Exact Mass: 1611.8436



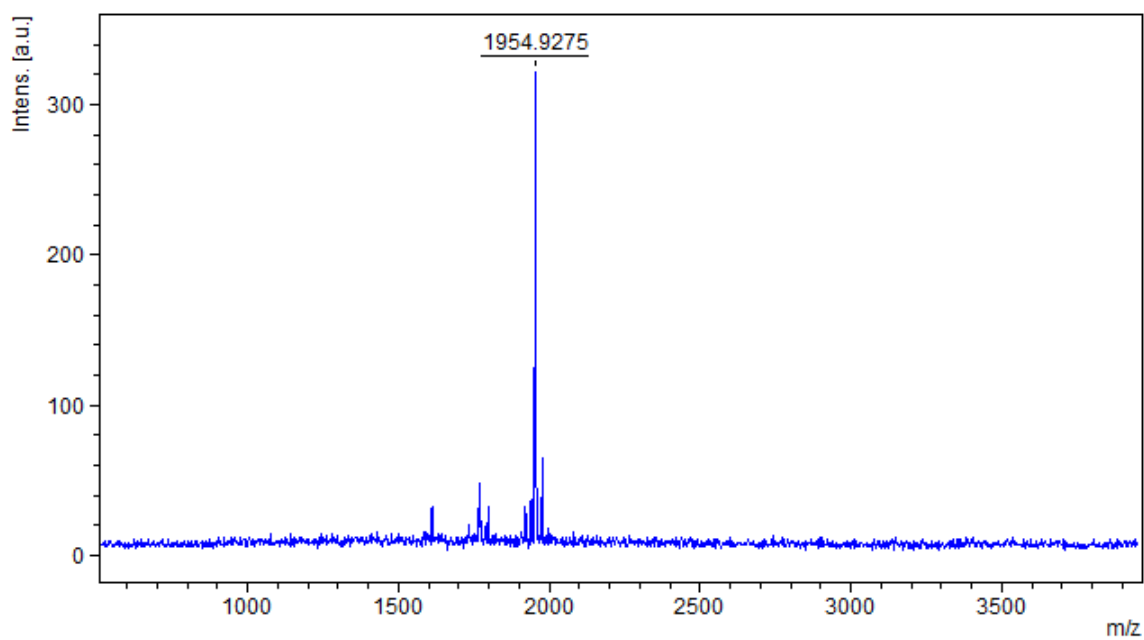
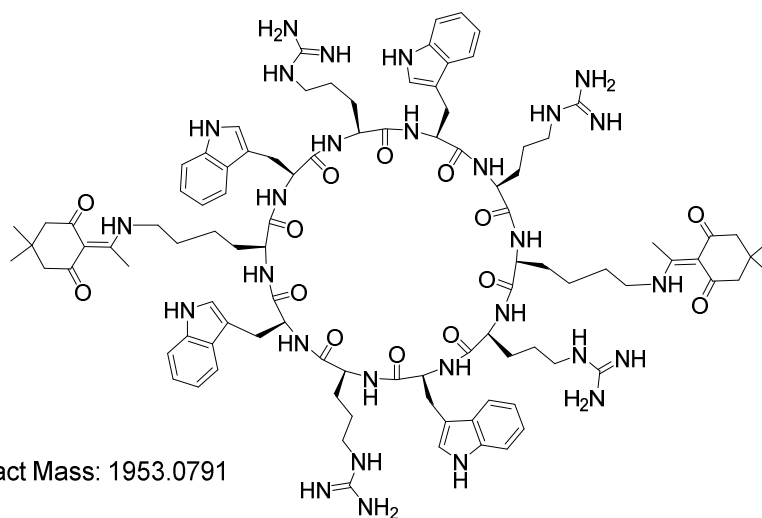
Peptide #8



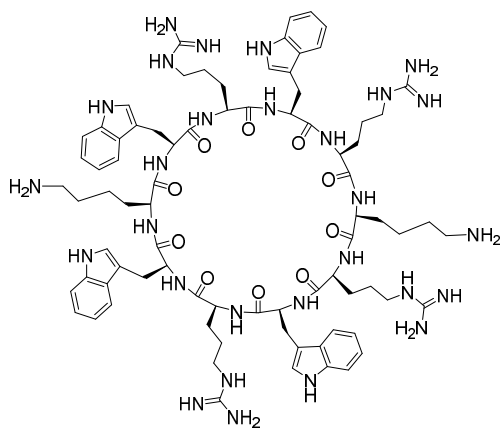
Exact Mass: 1971.0896



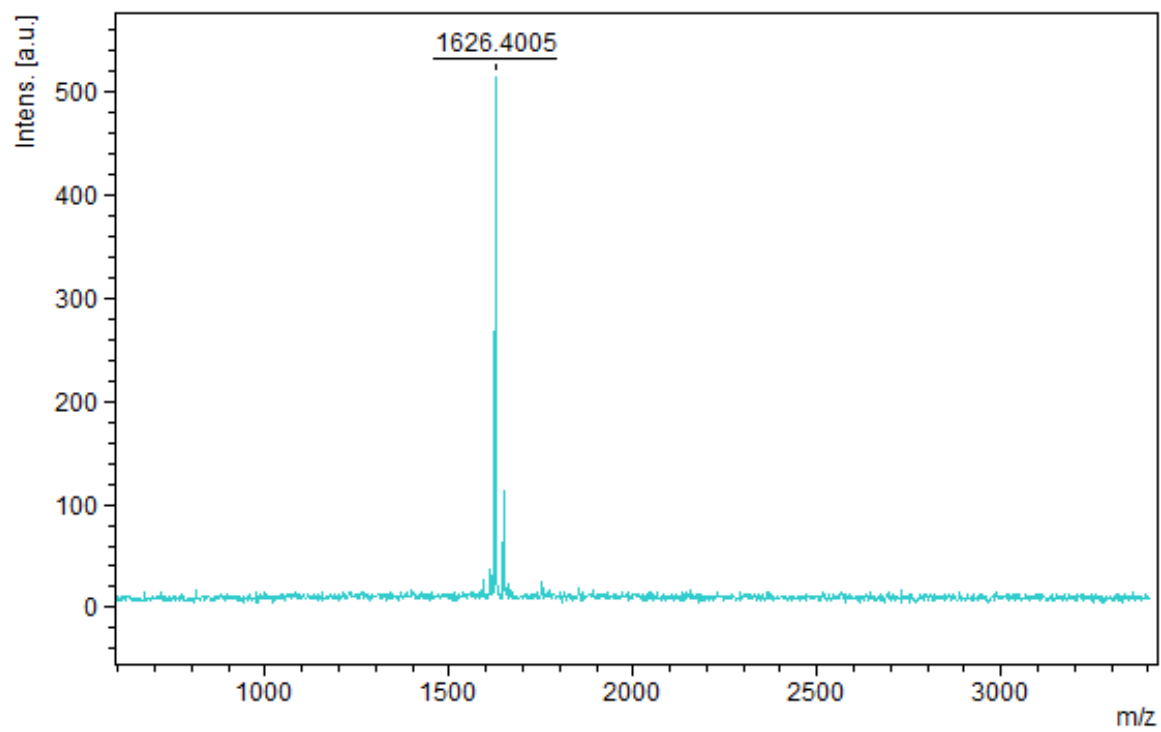
Peptide # 9/10 with Dde



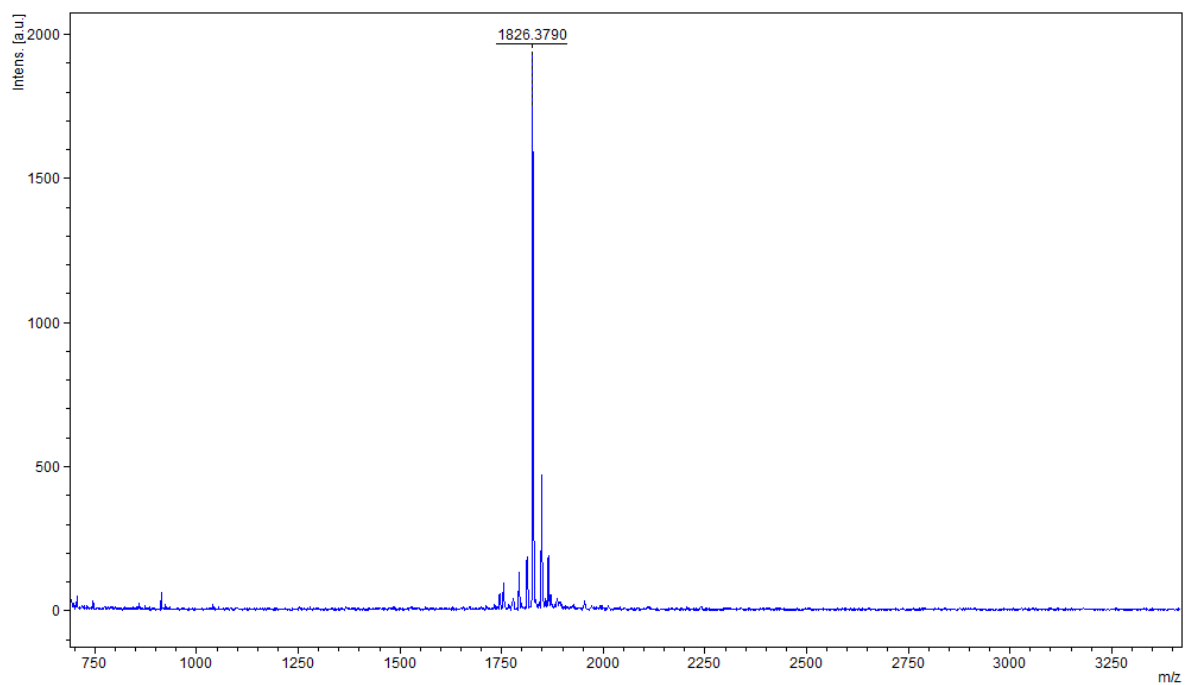
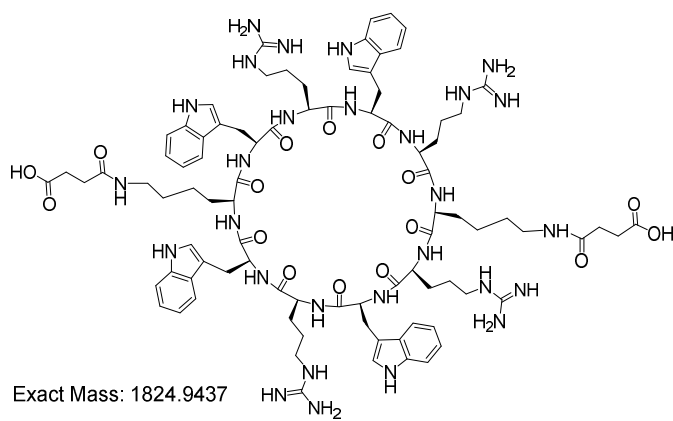
Peptide #10



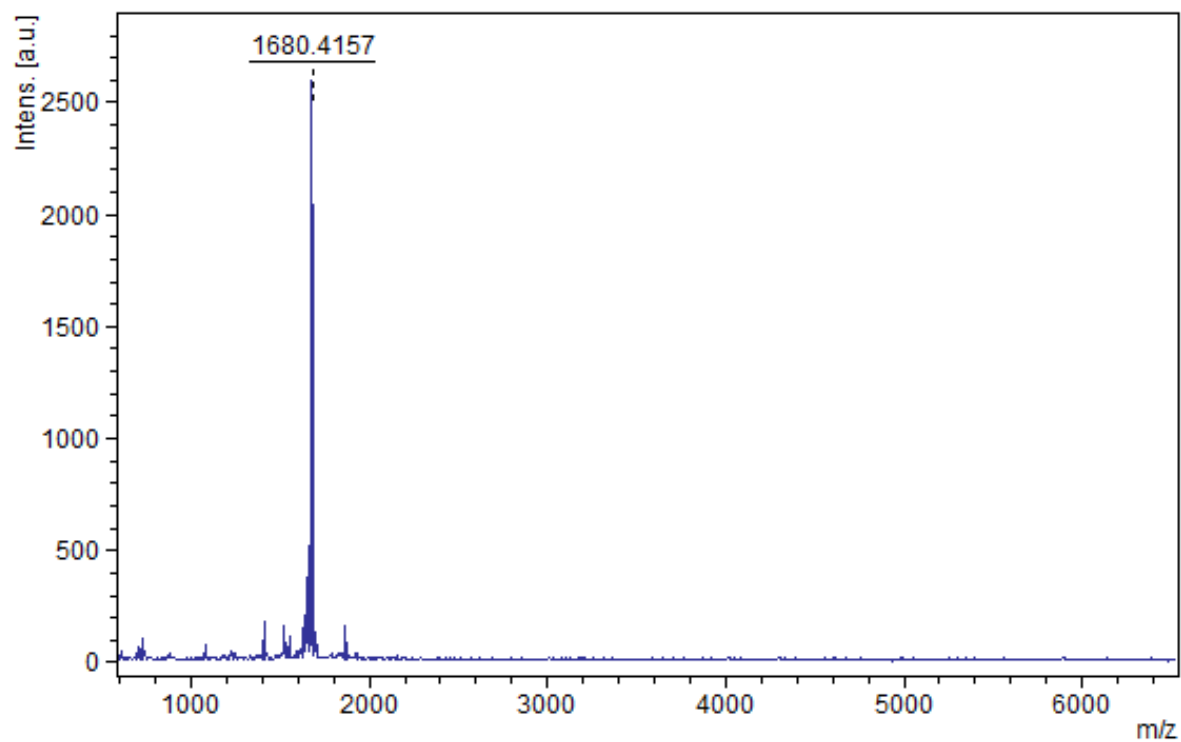
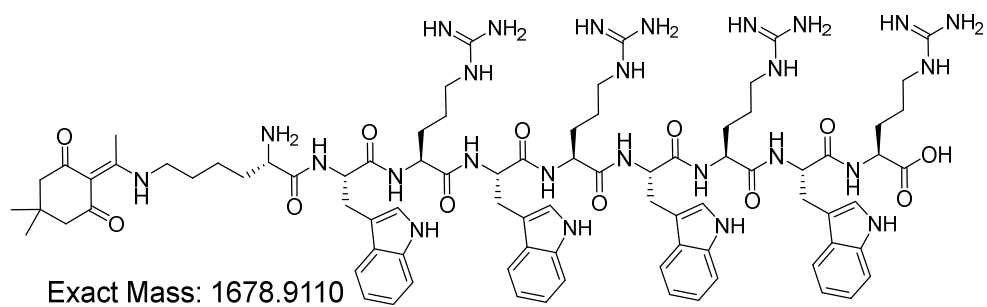
Exact Mass: 1624.9116



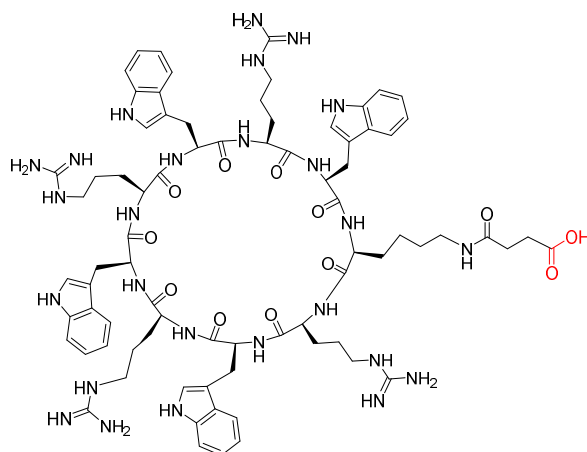
Peptide #12



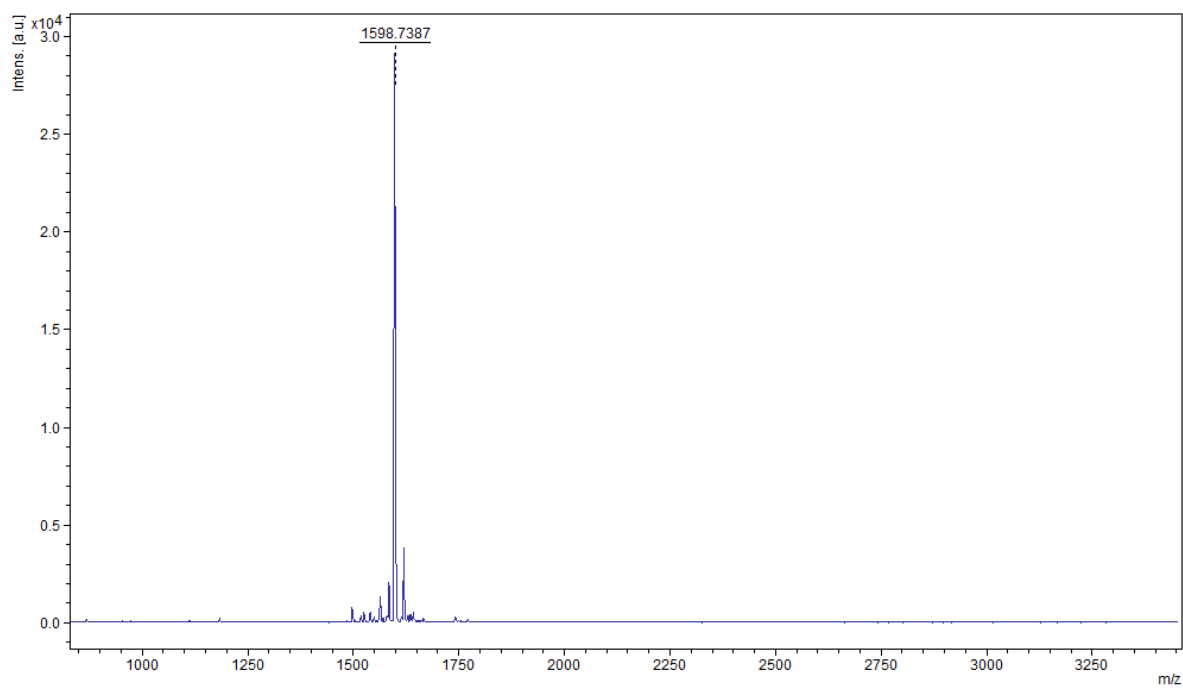
Peptide #13



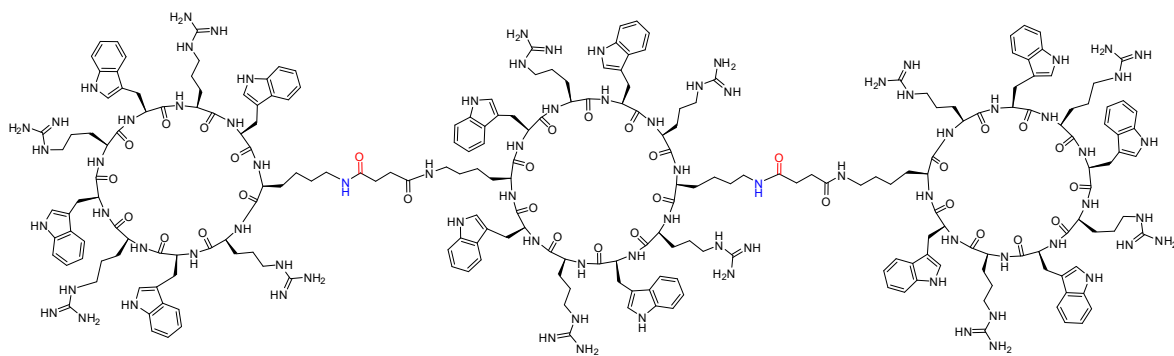
Peptide #18



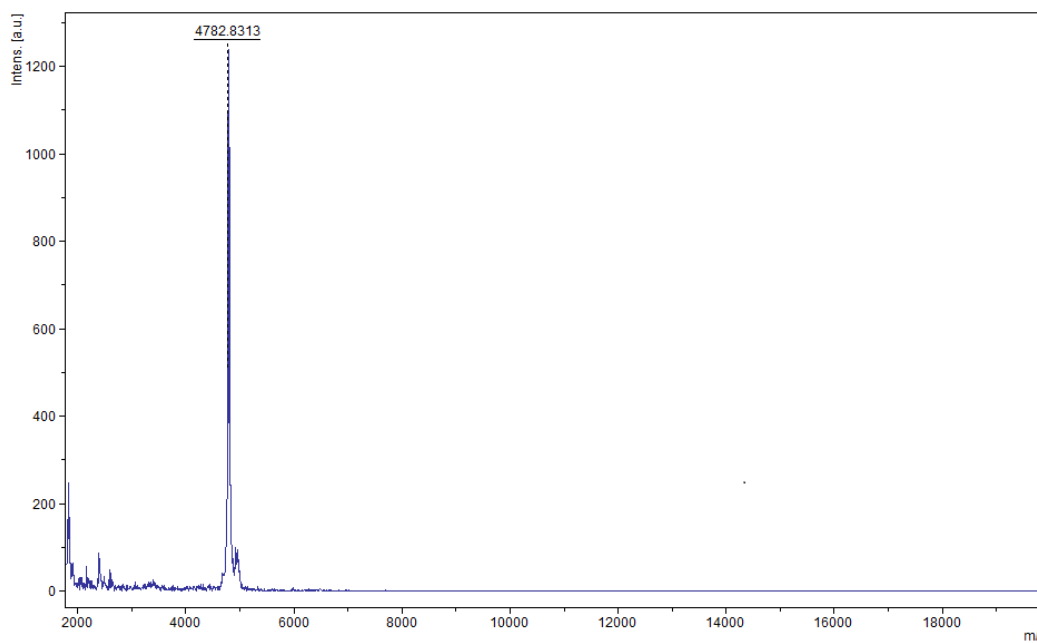
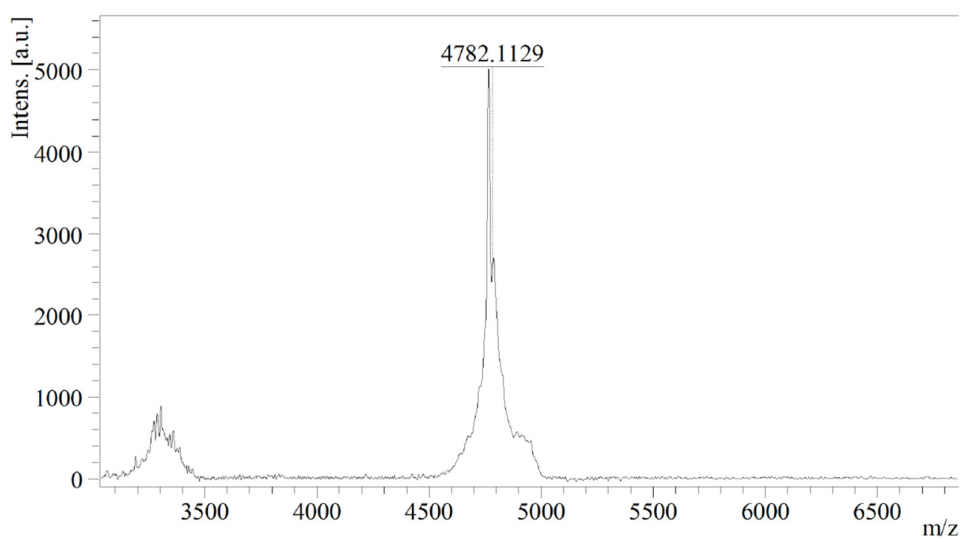
Exact Mass: 1596.8327



Peptide #20



Exact Mass: 4782.5559



HPLC of compound 20

Tricyclic peptide **20** was purified using reverse phase-high performance liquid chromatography (RP-HPLC) using Hitachi L-2455 system (Canby, OR, USA) with a C18 Phenomenex column (Prodigy, 10 μm , 2.1 $\text{cm} \times 25 \text{ cm}$), at a flow rate of 10 mL/min with the detection at 214 nm using a gradient of 0-100% acetonitrile (0.1% trifluoroacetic acid (TFA)) and water (0.1% TFA) over 60 min.

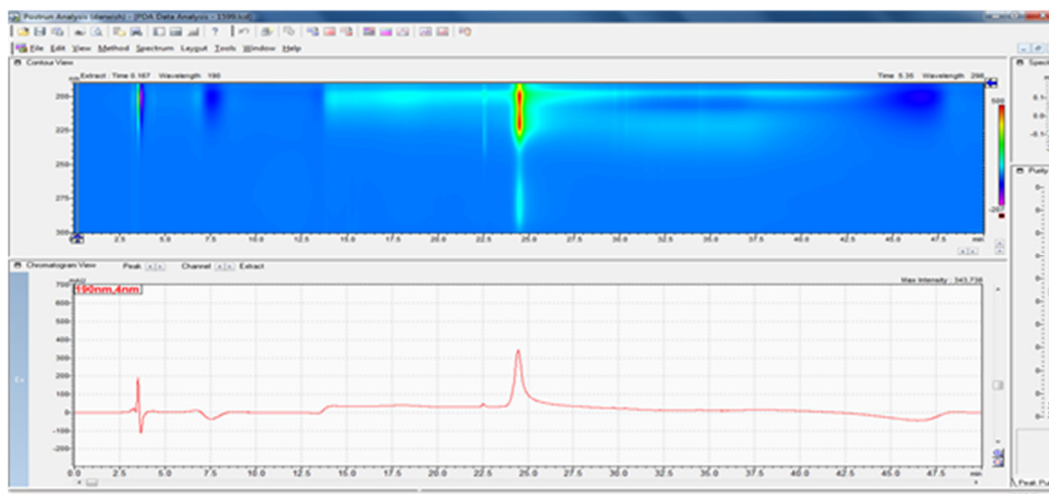


Figure S1. Preparatory RP-HPLC profile of tricyclic peptide **20**.

The analytical HPLC (HITACHI LaChrom ULTRA) was run with a gradient system of acetonitrile and water with 0.1% TFA (v/v) using a reversed-phase VyDAC column (218TP54, 5 μm , 4.60 $\text{mm} \times 150 \text{ mm}$) and flow rate of 1 mL/min with the detection at 214 nm.

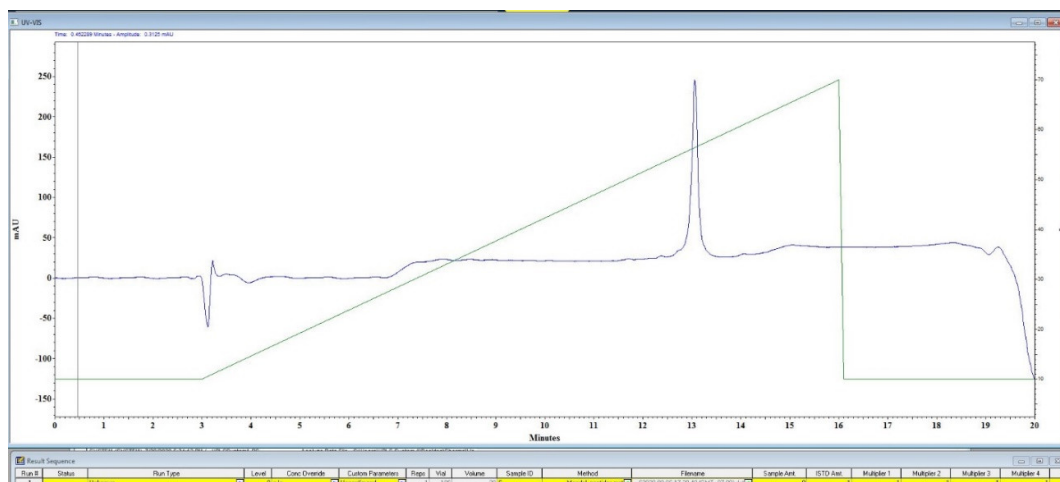


Figure S2. Analytical RP-HPLC profile of tricyclic peptide **20**.

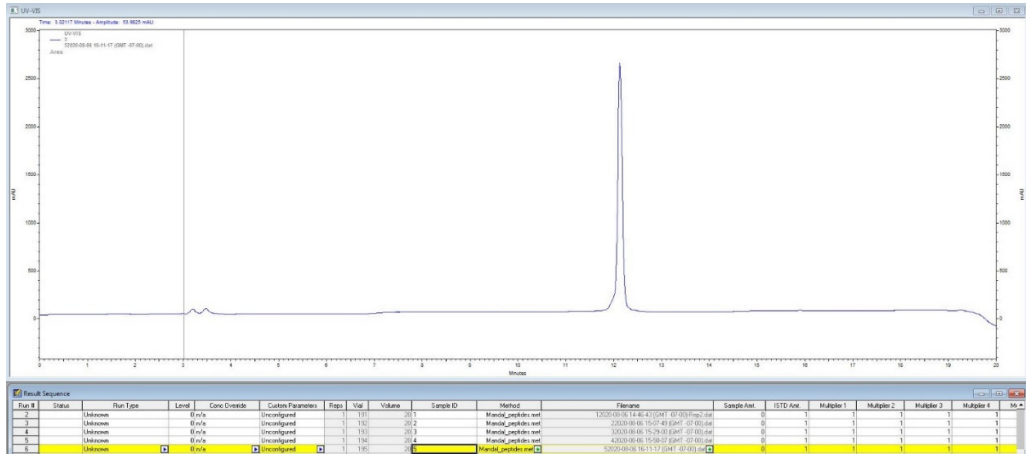


Figure S3. Analytical RP-HPLC profile of peptide 7.

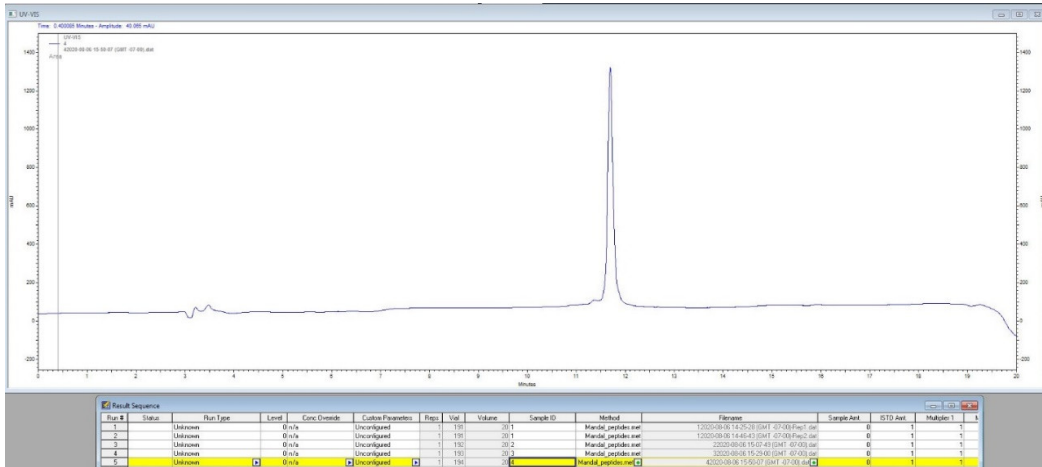


Figure S4. Analytical RP-HPLC profile of peptide 10.

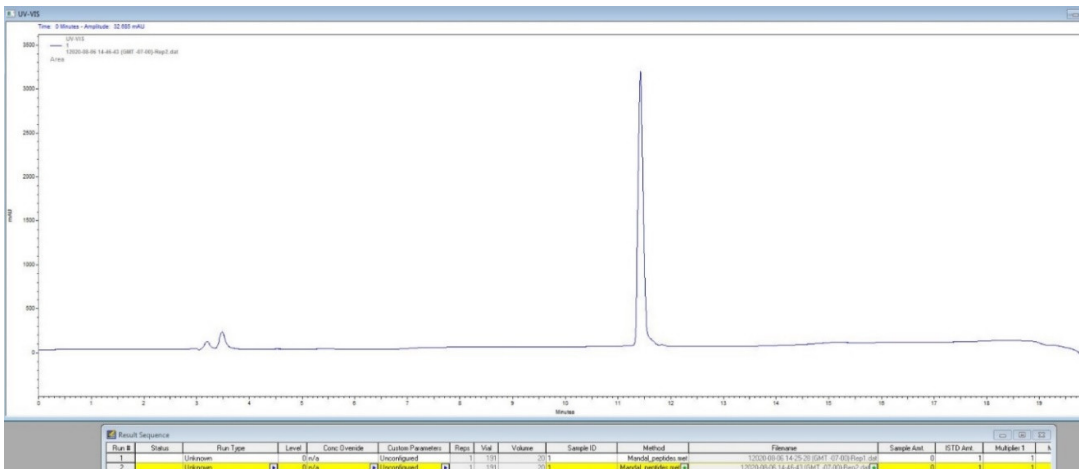


Figure S5. Analytical RP-HPLC profile of peptide 16.

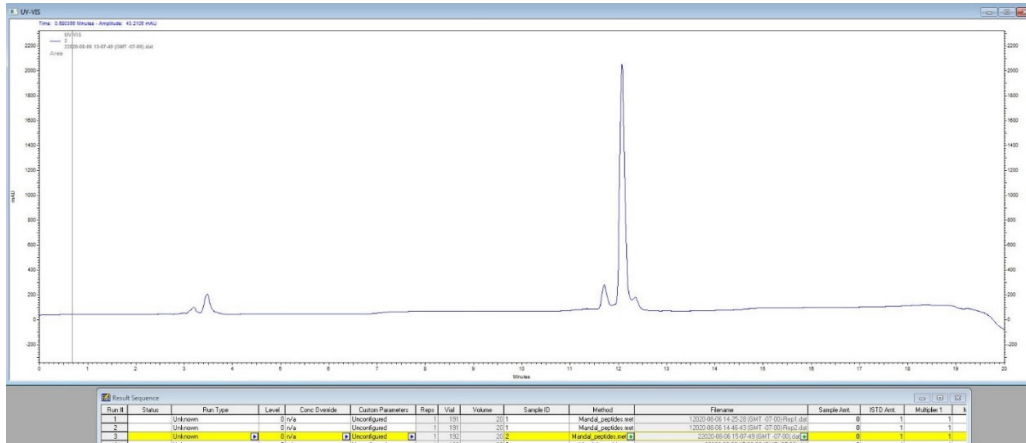


Figure S6. Analytical RP-HPLC profile of peptide 18.

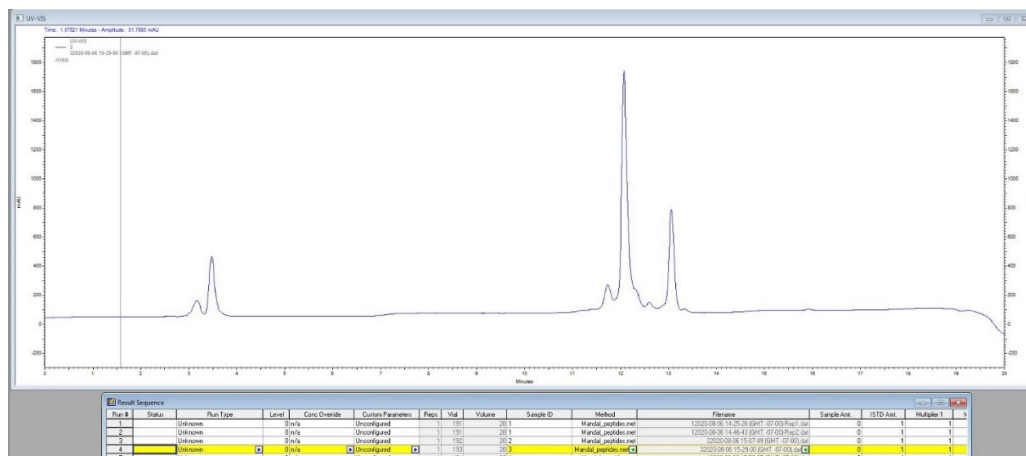


Figure S7. Analytical RP-HPLC profile of crude peptide 12.