

**Figure S1 - Reference chromatograms for THC and CBD analytical standards,  $\beta$ -4 oil and 2T emulsions**

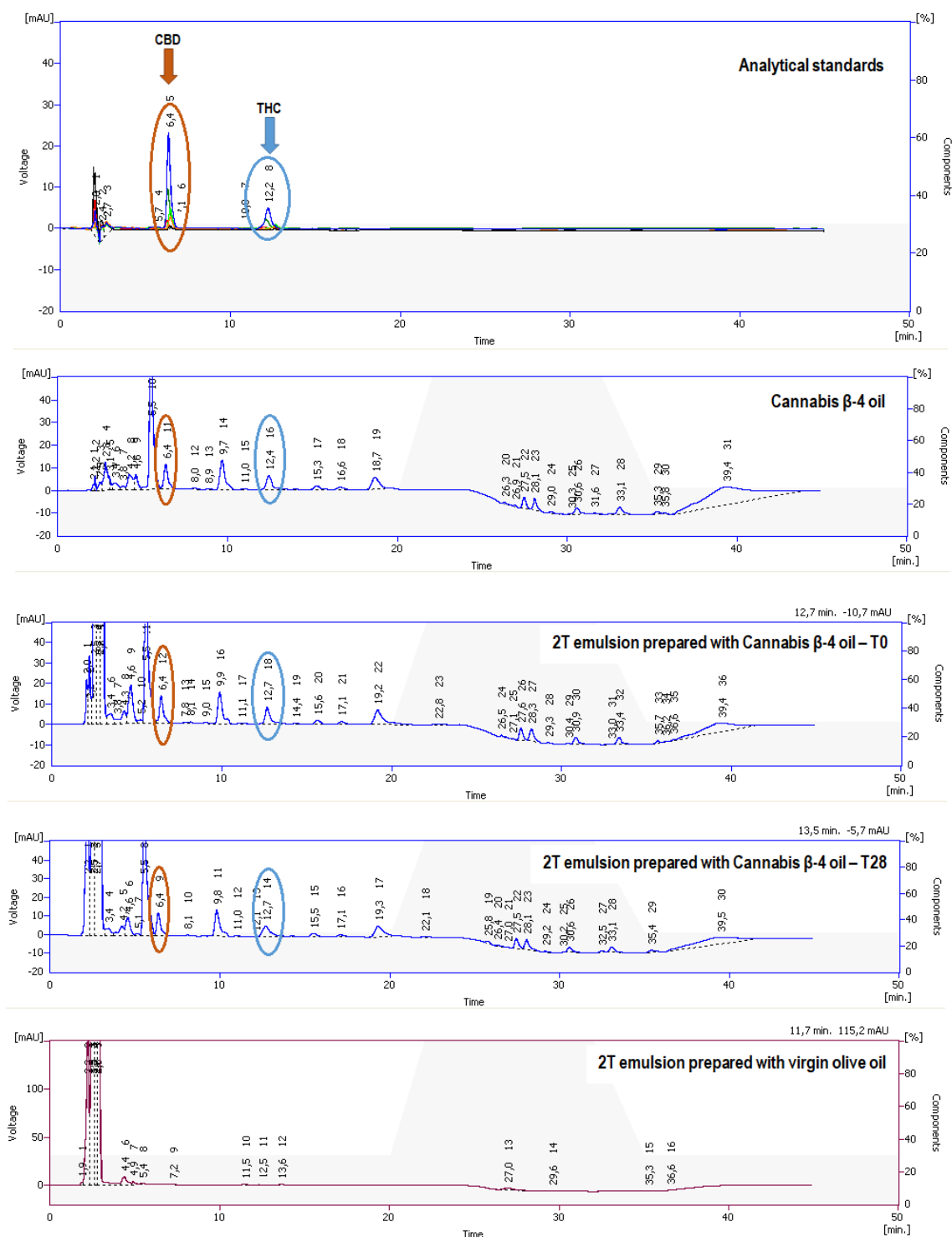


Table S1 - results obtained from the 2T emulsions quantitative analyzes

	2T EMULSIONS											
	THC						CBD					
	THC expected concentration in the emulsions (mg/g)	THC experimental concentration in the emulsions (mg/g)	mean value	SD	percentage variation compared to the mean value	percentage variation compared to the expected value	CBD expected concentration in the emulsions (mg/g)	CBD experimental concentration in the emulsions (mg/g)	mean value	SD	percentage variation compared to the mean value	percentage variation compared to the expected value
T0 LOTTO A	0,93	0,94	0,93	0,051	1,25	1,77	1,10	1,14	1,15	0,036	-0,79	3,89
		0,86			-7,32	-6,85		1,17			2,12	6,94
		0,87			-6,38	-5,90		1,18			2,89	7,74
T0 LOTTO B		0,94			0,90	1,42		1,20			4,62	9,55
		1,01			8,54	9,09		1,14			-0,99	3,68
		0,90			-2,86	-2,36		1,12			-2,81	1,77
T0 LOTTO C		1,00			7,01	7,56		1,16			0,76	5,51
		0,90			-3,45	-2,95		1,09			-5,66	-1,21
		0,95			2,31	2,83		1,15			-0,15	4,56
T28 LOTTO A		0,85	0,92	0,058	-7,53	-7,67		1,21	1,15	0,043	4,59	9,95
		0,90			-2,21	-2,36		1,17			0,99	6,17
		0,91			-1,50	-1,65		1,10			-4,6	0,3
T28 LOTTO B	0,96	4,18			4,01	1,18	2,31	7,56				
	0,95	2,29			2,13	1,18	2,5	7,76				
	1,01	8,91			8,74	1,15	-0,15	4,98				
T28 LOTTO C	0,86	-6,46			-6,61	1,11	-3,65	1,29				
	0,87	-6,11			-6,26	1,20	3,54	8,86				
	1,00	8,44			8,26	1,09	-5,54	-0,7				