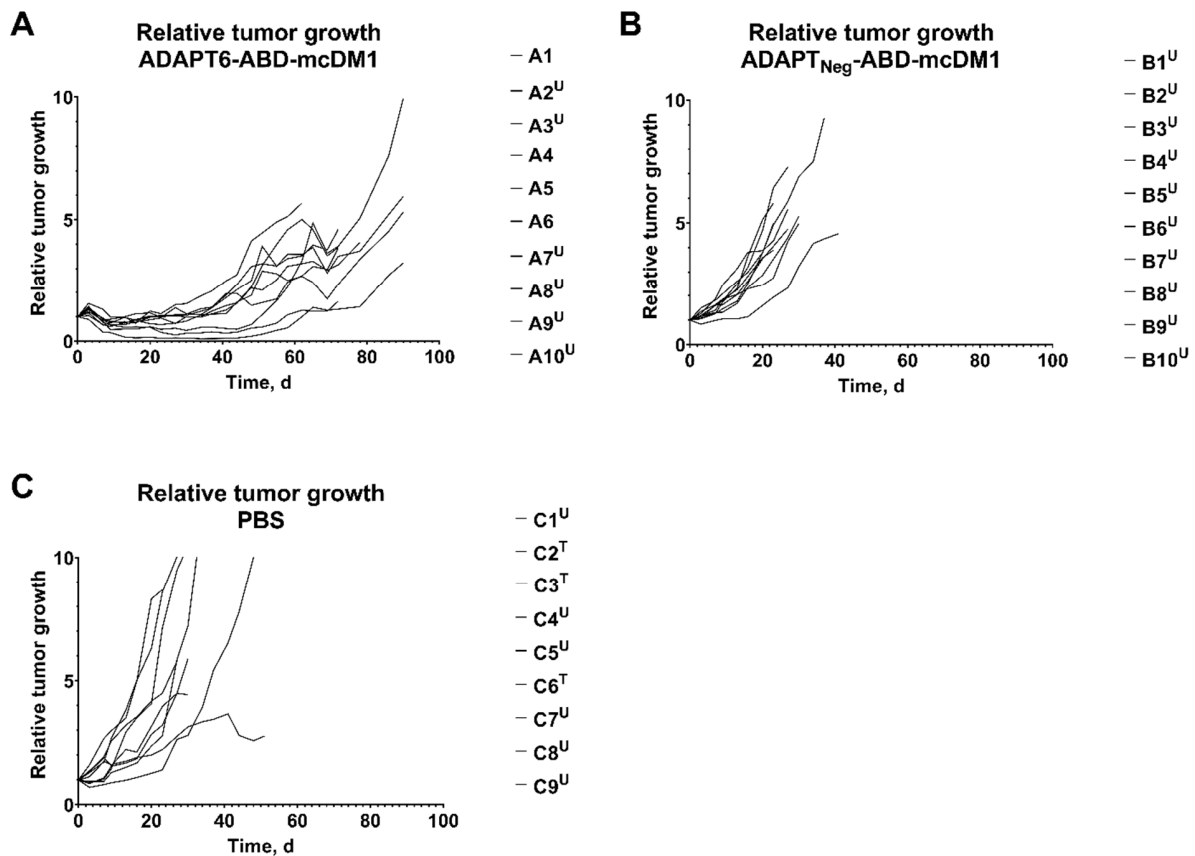
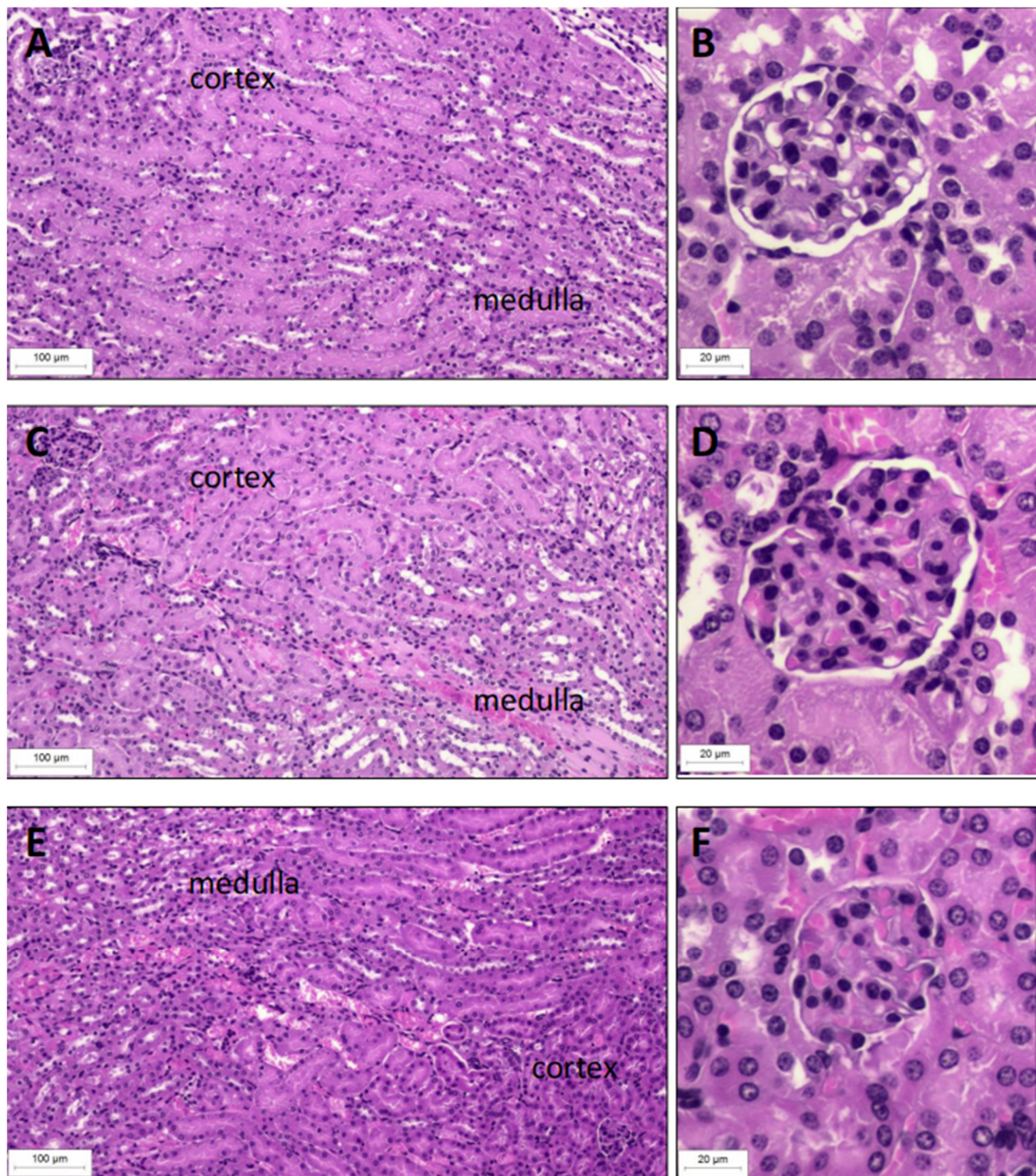


# Supplementary Materials: Experimental HER2-targeted therapy using ADAPT6-ABD-mcDM1 in mice bearing SKOV3 ovarian cancer xenografts: efficacy and selection of companion imaging counterpart

Javad Garousi, Tianqi Xu, Yongsheng Liu, Olga Vorontsova, Sophia Hober, Anna Orlova, Vladimir Tolmachev, Torbjörn Gräslund, Anzhelika Vorobyeva

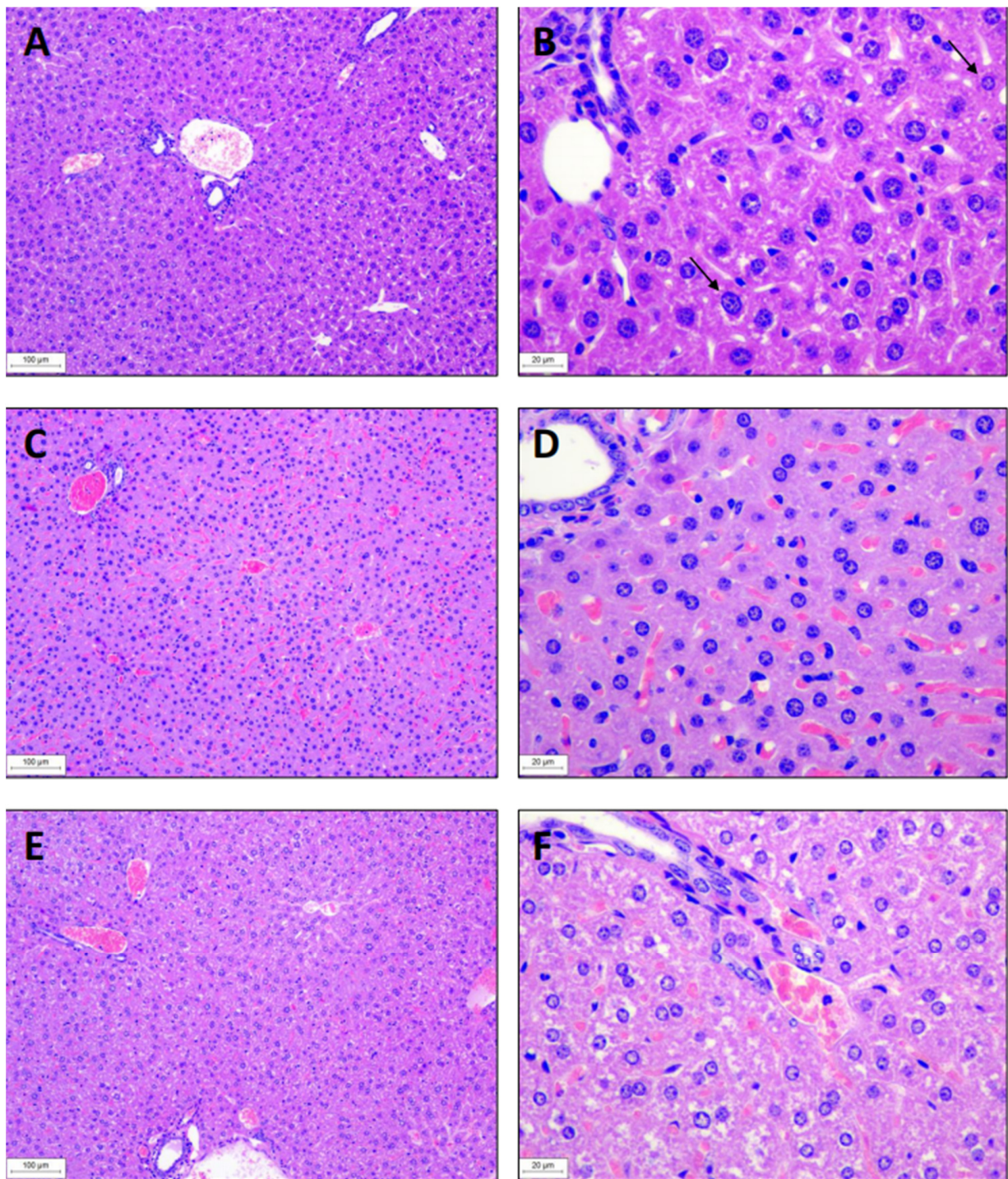


**Figure S1.** Relative tumor growth curve of BALB/C nu/nu mice bearing SKOV3 xenografts. Mice were treated with (A) ADAPT6-ABD-mcDM1, (B) ADAPTNeg-ABD-mcDM1 and (C) PBS. The mice were euthanized when the volume of the subcutaneous xenografts exceeded 1000 mm<sup>3</sup> (T) or bleeding ulcers on the xenografts were observed (U).



**Figure S2.** Results of pathological examination of kidneys. HE, 100x and 400x of kidney in mouse from (A,B) ADAPT6-ABD-mcDM1 group, (C,D) ADAPT<sub>Neg</sub>-ABD-mcDM1 group and (E,F) PBS group.





**Figure S3.** Results of pathological examination of livers. HE, 100x and 400x of liver in mouse from (A,B) ADAPT6-ABD-mcDM1 group (C,D) ADAPT<sub>Neg</sub>-ABD-mcDM1 group and (E,F) PBS group. Arrows indicate a small and a large nucleus.

