

Supplementary Materials

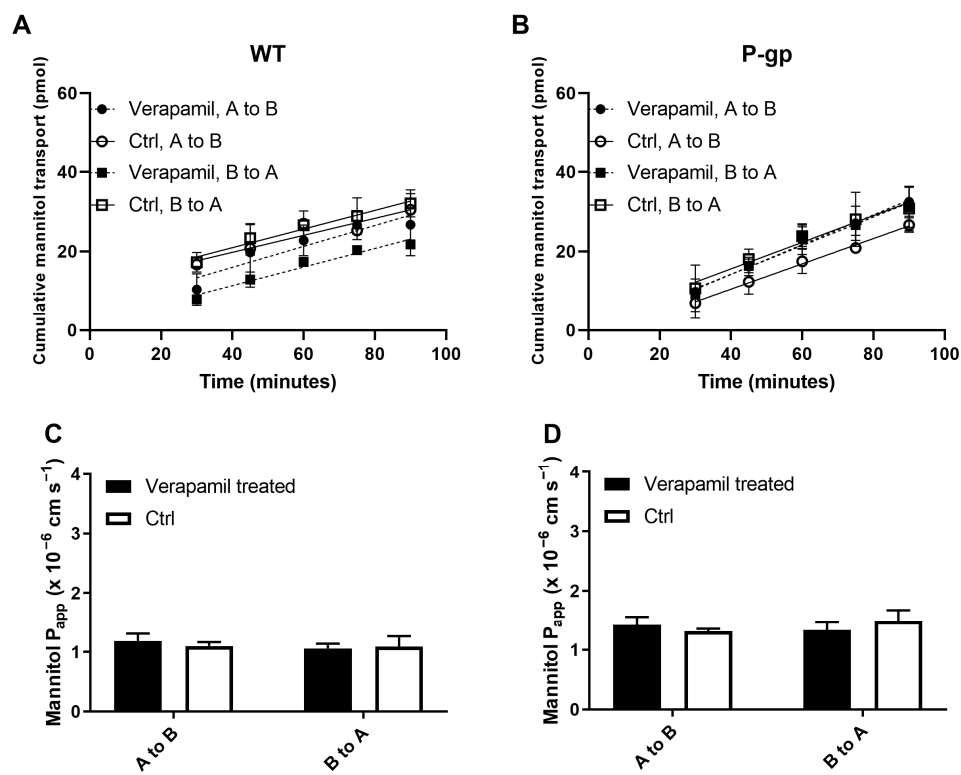


Figure S1. Mannitol bi-directional transport across MDCKII WT (A) and P-gp (B) cell monolayers with and without the transporter inhibitor, verapamil; P_{app} values obtained from the transport assays (C & D). Data represented as mean \pm SD of three biological replicates.

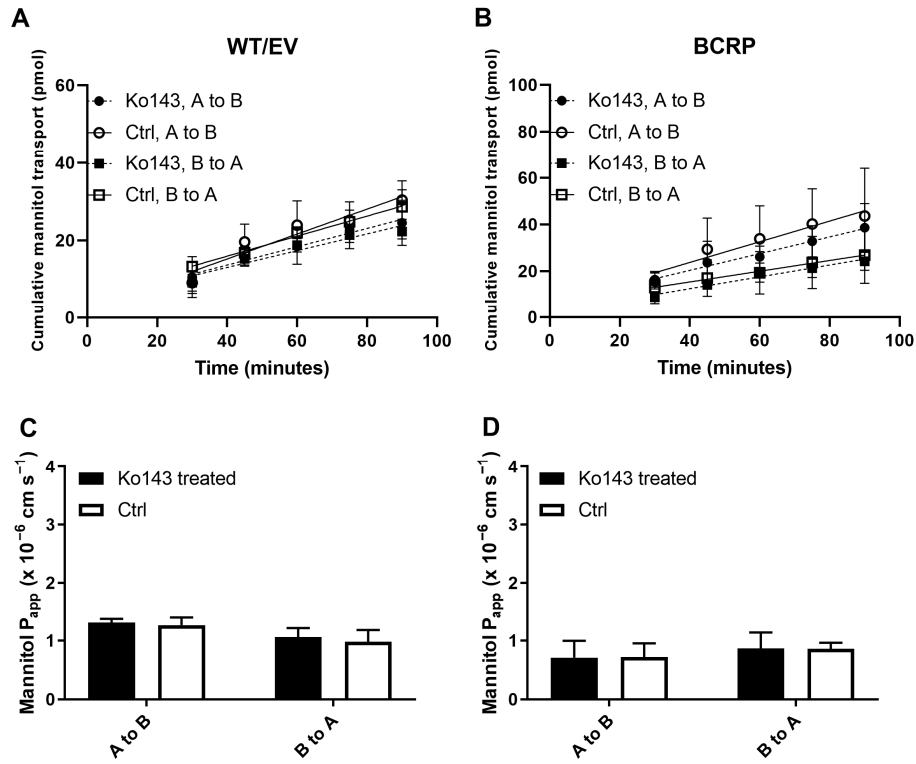


Figure S2. Mannitol bi-directional transport across MDCKII WT/EV (A) and BCRP (B) cell monolayers with and without transporter inhibitors (Ko143 and Ctrl); P_{app} values obtained from the transport assays (C & D). Data represented as mean \pm SD of three biological replicates.

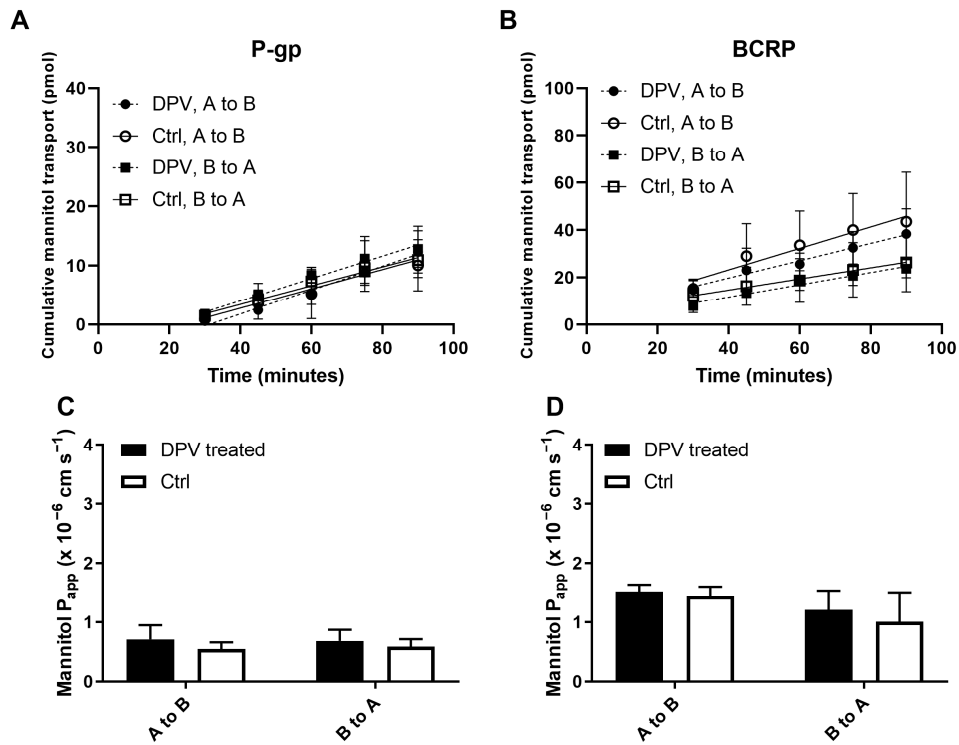


Figure S3. Mannitol bi-directional transport across MDCKII P-gp (A) and BCRP (B) cell monolayers with and without DPV (DPV and Ctrl); P_{app} values obtained from the transport assays (C to D). Data represented as mean \pm SD of three biological replicates.

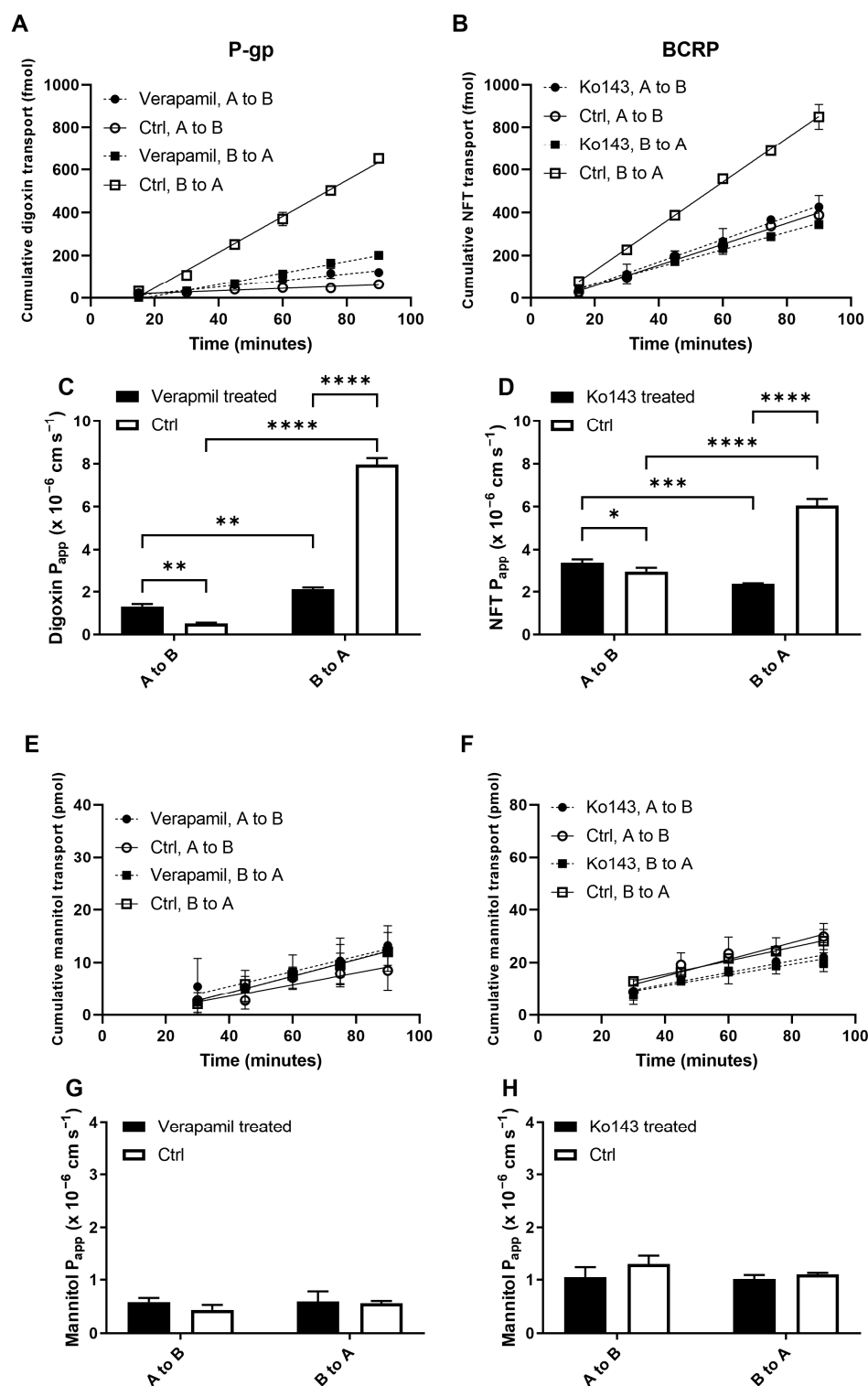


Figure S4. Bi-directional transport of digoxin (A) and mannitol (E) across MDCKII P-gp cell monolayers with and without the P-gp inhibitor, verapamil; Bi-directional transport of nitrofurantoin (B) and mannitol (F) across MDCKII BCRP cell monolayers with and without the BCRP inhibitor, Ko143; P_{app} values obtained from the transport assays (C, D, G & H). Data represented as mean \pm SD of three biological replicates. * $p < 0.05$. ** $p < 0.01$. *** $p < 0.001$. **** $p < 0.0001$ (Student's t -test).