

Supplementary Material

## Fish Scale Gelatin Nanofibers with *Helichrysum Italicum* and *Lavandula Latifolia* Essential Oils for Bioactive Wound-Healing Dressings

Carmen Gaidau <sup>1</sup>, Maria Râpă <sup>2,\*</sup>, Maria Stanca <sup>1,\*</sup>, Mariana-Luiza Tanase <sup>3</sup>, Laura Olariu <sup>3</sup>, Rodica Roxana Constantinescu <sup>1</sup>, Andrada Lazea-Stoyanova <sup>4</sup>, Cosmin-Andrei Alexe <sup>1</sup> and Madalina Tudorache <sup>5</sup>

<sup>1</sup> The National Research & Development Institute for Textiles and Leather-Division Leather and Footwear Research Institute, Bucharest 31251, Romania; carmen.gaidau@icpi.ro (C.G.); rodica.roxana@yahoo.com (R.R.C.); cosminandrei.alex@icpi.ro (C.-A.A.)

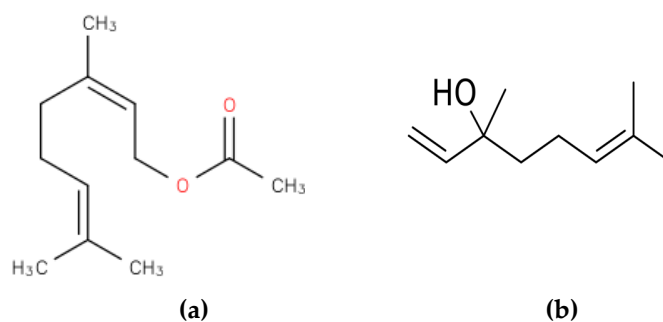
<sup>2</sup> Faculty of Materials Science and Engineering, National University of Science and Technology Politehnica Bucharest, Bucharest 060042, Romania; maria.rapa@upb.ro

<sup>3</sup> SC Biotehnos SA, 3–5 Gorunului Street, Otopeni 075100, Romania; luiza.craciun@biotehnos.com (M.-L.T.); lolariu@biotehnos.com (L.O.)

<sup>4</sup> National Institute for Laser, Plasma and Radiation Physics, 409 Atomistilor Street, Magurele, Ilfov 077125, Romania; andrada@infim.ro

<sup>5</sup> Laboratory for Quality Control and Process Monitoring, Faculty of Chemistry, University of Bucharest, 4-12 Regina Elisabeta Boulevard, Bucharest 030018, Romania; madalina.sandulescu@g.unibuc.ro

\* Correspondence: maria.rapa@upb.ro (M.R.); maria.stanca@icpi.ro (M.S.)



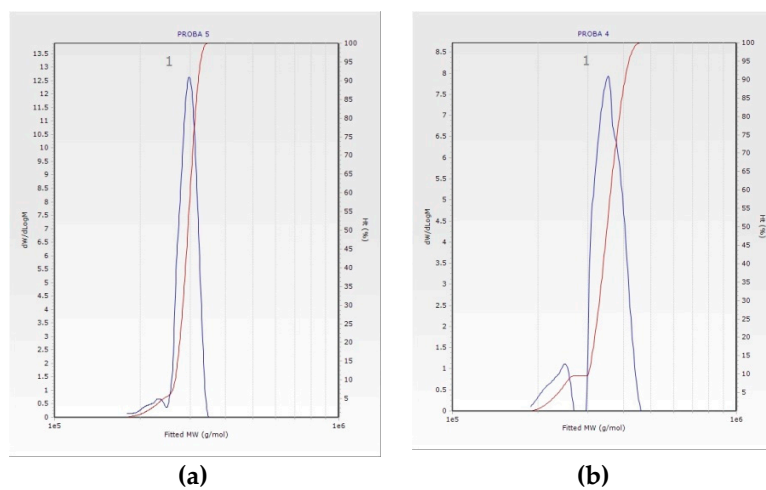
**Figure S1.** Chemical structure for: (a) Neryl acetate; (b) Linalool.



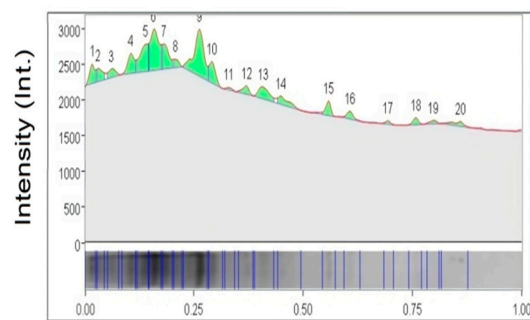
**Figure S2.** Emulsions of lavender and immortelle essential oils.



**Figure S3.** Electrospinnig of fish scale gelatin dispersions on polypropylene sheet.

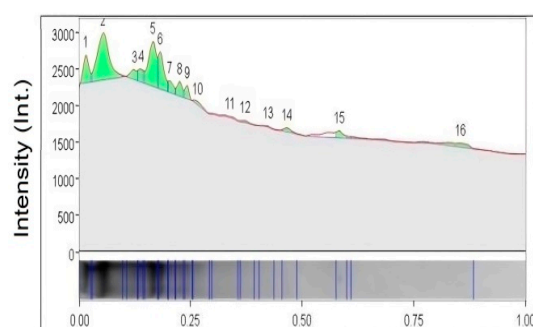


**Figure S4.** GP chromatograms for: (a) F-EDTA, and (b) F+EDTA.



Relative front (Rf)

(a)



Relative front (Rf)

(b)

**Figure S5.** SDS-PAGE electrophoresis gels band analyses and the molecular weight distribution of fish scale gelatins. (a) F-EDTA; (b) F+EDTA.