

Metformin-NSAIDs molecular salts: a path towards enhanced oral bioavailability and stability

Francisco Javier Acebedo-Martínez, Alicia Domínguez-Martín, Carolina Alarcón-Payer, Carolina Garcés-Bastida, Cristóbal Verdugo-Escamilla, Jaime Gómez-Morales, Duane Choquesillo-Lazarte*

Table of contents

Figure S1. PXRD patterns of the molecular salts obtained by LAG, compared with their respective components.

Figure S2. PXRD pattern of MTF–NIFH₂O, compared with the product of the LAG in water.

Figure S3. ORTEP representation showing the asymmetric unit of MTF–MEF (a), MTF–TLF (b), MTF–NIF (c), MTF–NIF·2H₂O (d), MTF–DIF (e), and MTF–FLP (f) with atom numbering scheme (thermal ellipsoids are plotted with the 50% probability level).

Figure S4. PXRD patterns of the reported molecular salts after aqueous slurring for 24 hours.

Figure S5. PXRD pattern of LAG of the mixture of MTF and DIF using water as liquid additive compared with the product after the slurry of MTF–DIF in aqueous media.

Figure S6. PXRD patterns of reported molecular salts under accelerated ageing conditions for 4 months.

Figure S7. Calibration curve of MTF·HCl determined from HPLC data.

Table S1. HPLC method parameters.

Table S2. Hydrogen bonds for MTF–NSAIDs molecular salts [Å and deg.].

Table S3. π,π -stacking interactions analysis of compounds MTF–MEF, MTF–TLP and MTF–FLP.

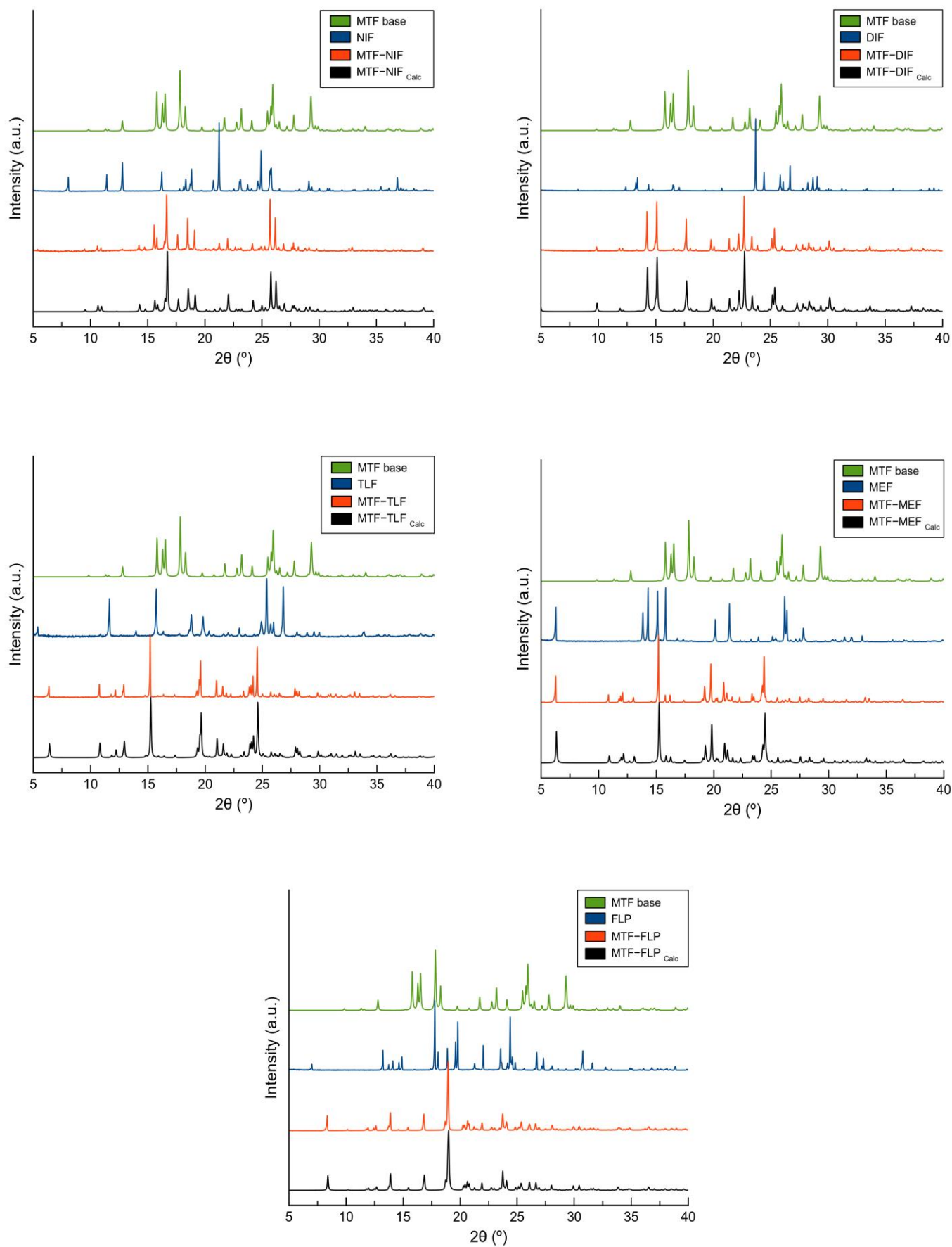


Figure S1. PXRD patterns of the molecular salts obtained by LAG, compared with their respective components.

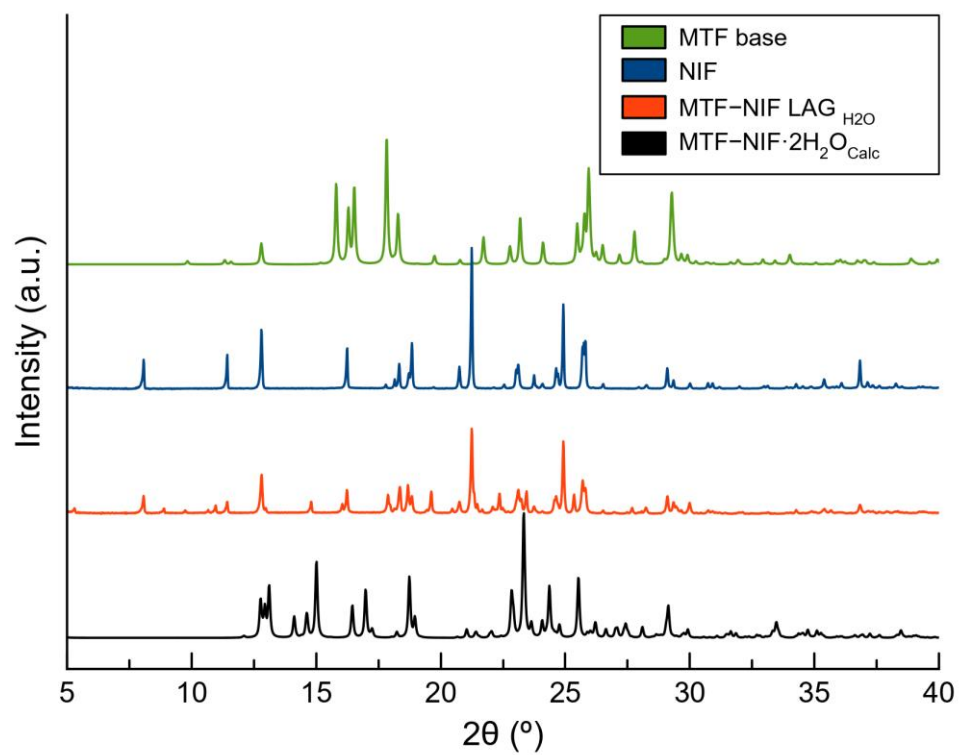


Figure S2. PXRD patterns of MTF-NIF·2H₂O, compared with the product of the LAG in water.

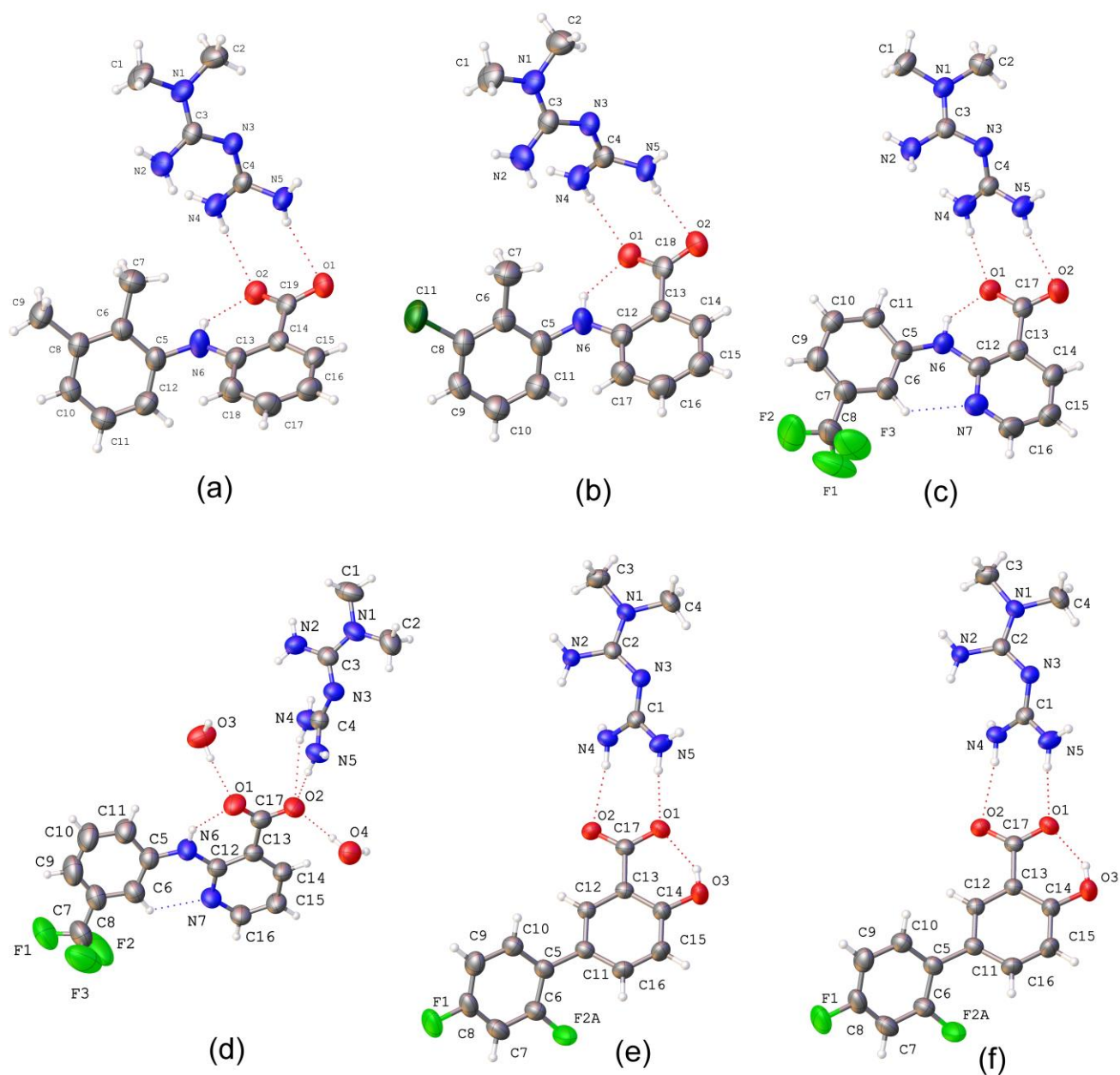


Figure S3. ORTEP representation showing the asymmetric unit of MTF—MEF (a), MTF—TLF (b), MTF—NIF (c), MTF—NIF·2H₂O (d), MTF—DIF (e), and MTF—FLP (f) with atom numbering scheme (thermal ellipsoids are plotted with the 50% probability level).

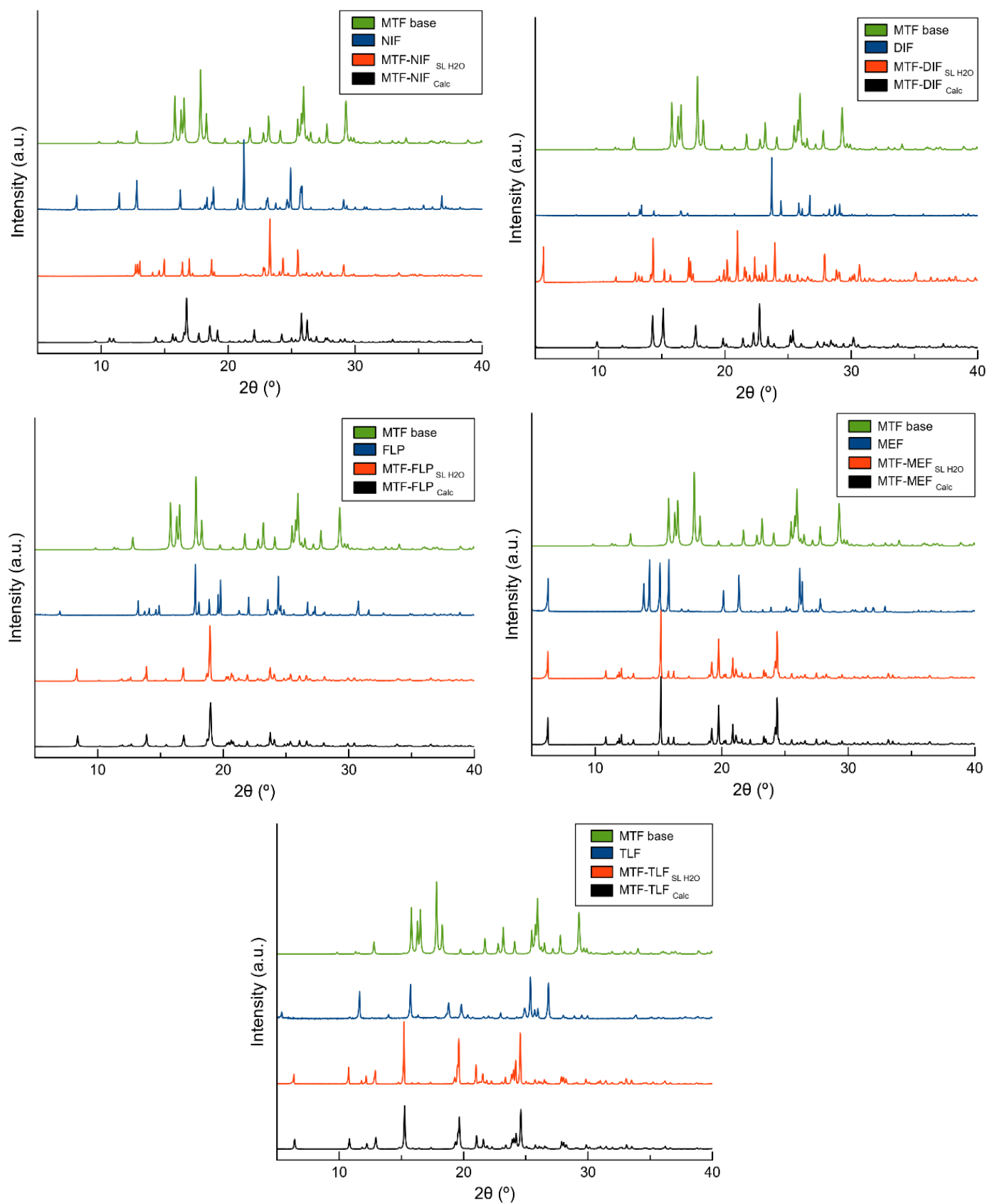


Figure S4. PXRD patterns of the reported molecular salts after aqueous slurring for 24 hours.

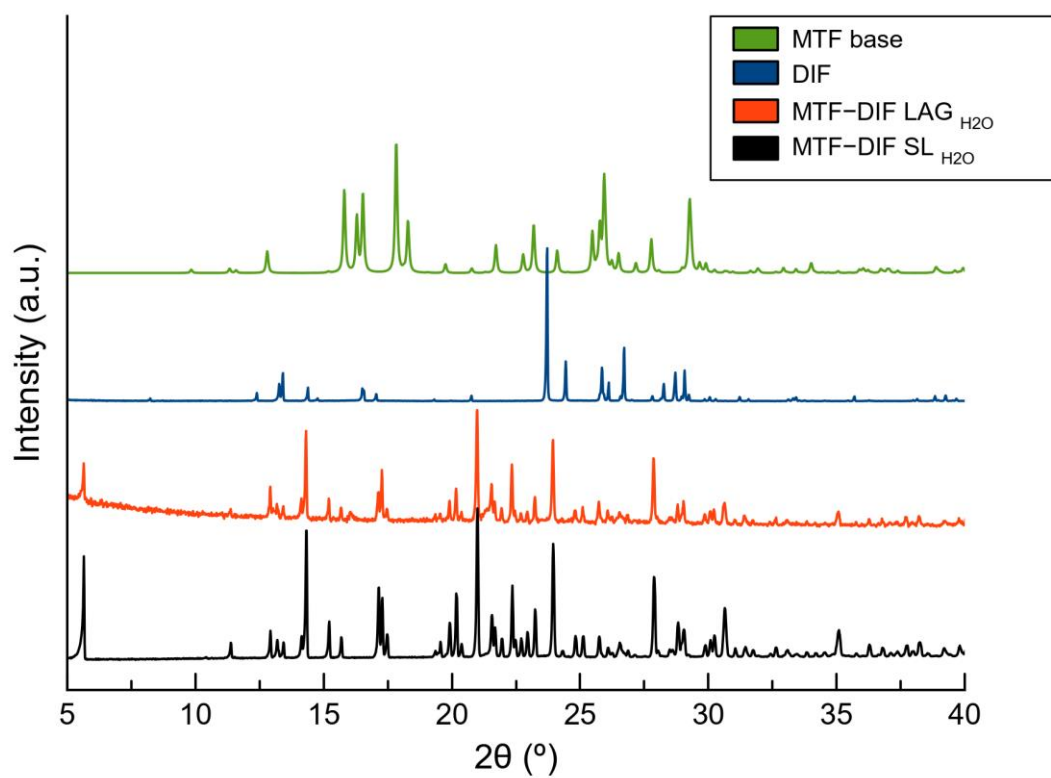


Figure S5. PXRD pattern of LAG of the mixture of MTF and DIF using water as liquid additive compared with the product after the slurry of MTF—DIF in aqueous media.

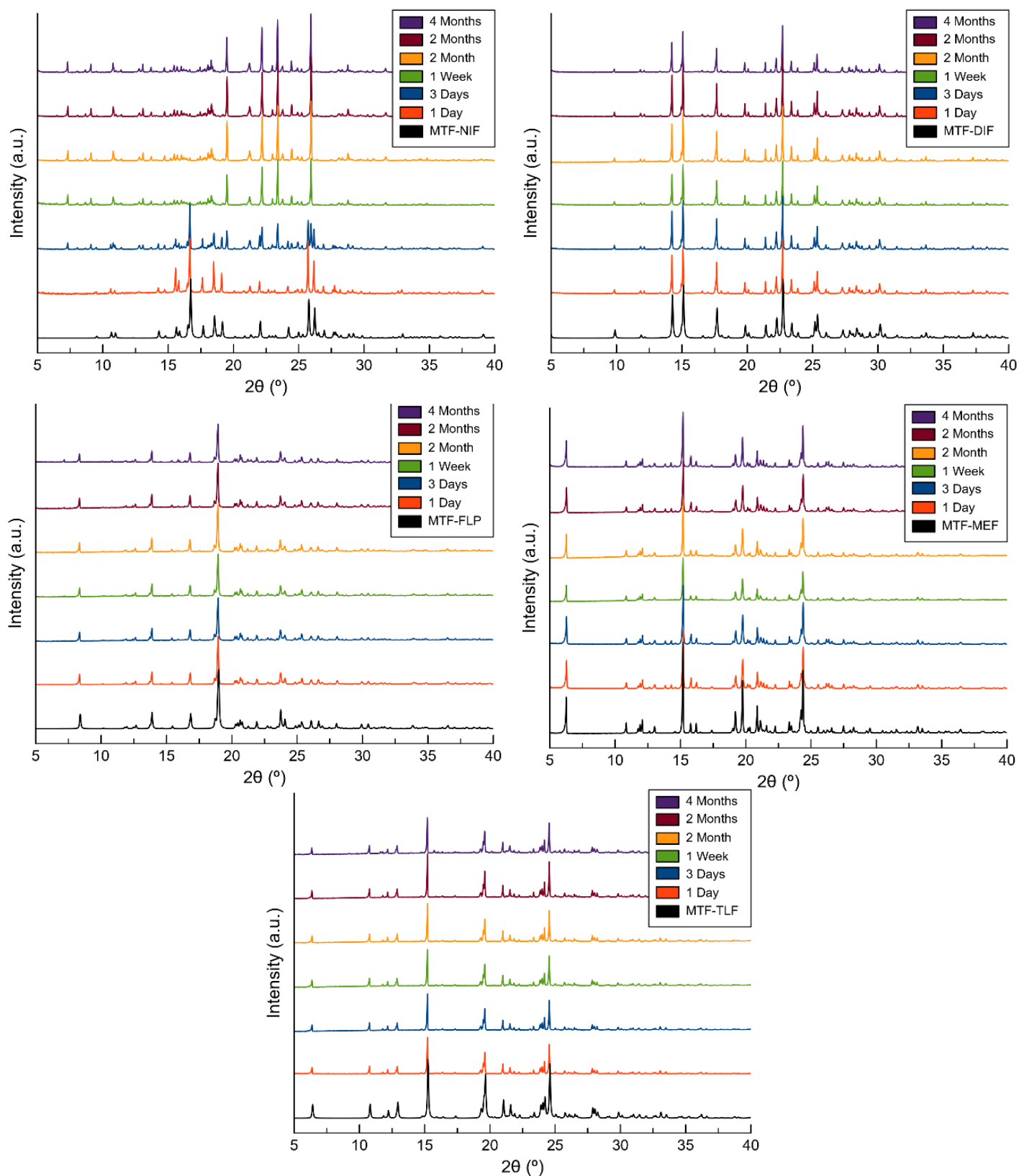


Figure S6. PXRD patterns of reported molecular salts under accelerated ageing conditions for 4 months.

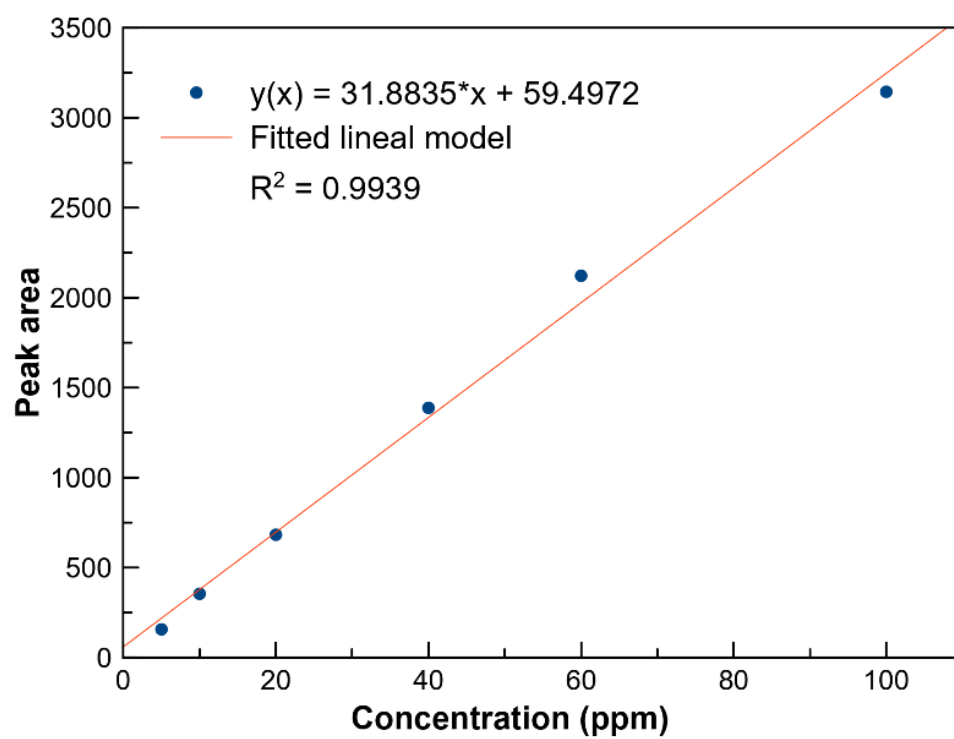


Figure S7. Calibration curve of MTF·HCl determined from HPLC data.

Table S1. HPLC method parameters

| Parameter | Details |
|----------------------------------|---|
| Column | 100 C18 (4.6 mm × 150 mm, 3 µm particle size) Scharlau |
| Mobile Phase | Isocratic 10% phase A : 90% phase B. A= 10% acetonitrile (0.1% Formic acid, v/v) B= 90% water (0.1% Formic acid, v/v). |
| Flow Rate | 1 mL/min |
| Injected Volume | 10 µL |
| Column Temperature | 25 °C |
| Sample Temperature | 25 °C |
| λ_{max} | 233 nm |
| Retention Time | 1 minute 54 seconds |
| Equation | $y(x) = 31.8835 \cdot x + 59.4972$ |
| Regression Coefficient (R^2) | 0.9939 |
| Calibration Range | 5– 100 mg/L (ppm) |

Table S2. Hydrogen bonds for MTF—NSAIDs molecular salts [\AA and deg.].

| | D-H...A | d(D-H) | d(H...A) | d(D...A) | <(DHA) |
|----------------|--|--------|----------|------------|--------|
| MTF-MEF | N(2)-H(2D)...O(1) | 0.86 | 2.17 | 2.8455(16) | 135.4 |
| | N(4)-H(4A)...O(2)#1 | 0.86 | 2.15 | 2.9671(16) | 157.9 |
| | N(4)-H(4B)...O(2)#2 | 0.86 | 2.11 | 2.9165(16) | 156.1 |
| | N(5)-H(5A)...O(1)#3 | 0.86 | 2.11 | 2.9049(18) | 151.8 |
| | N(5)-H(5B)...O(1)#1 | 0.86 | 2.23 | 2.9794(17) | 144.9 |
| | N(6)-H(6)...O(2) | 0.86 | 1.96 | 2.6496(17) | 135.7 |
| | #1 x,y+1,z #2 -x+1,y+1/2,-z+3/2 #3 -x+1,-y+2,-z+1 | | | | |
| | | | | | |
| MTF-TLF | D-H...A | d(D-H) | d(H...A) | d(D...A) | <(DHA) |
| | N(2)-H(2E)...O(2) | 0.86 | 2.09 | 2.839(2) | 144.9 |
| | N(4)-H(4A)...O(1)#1 | 0.86 | 2.16 | 2.969(2) | 157.3 |
| | N(4)-H(4B)...O(1)#2 | 0.86 | 2.12 | 2.930(2) | 156.9 |
| | N(5)-H(5A)...O(2)#3 | 0.86 | 2.12 | 2.911(3) | 152.0 |
| | N(5)-H(5B)...O(2)#1 | 0.86 | 2.16 | 2.988(2) | 161.5 |
| | N(6)-H(6)...O(1) | 0.86 | 1.95 | 2.637(2) | 136.5 |
| | #1 x,y-1,z #2 -x+1,y-1/2,-z+3/2 #3 -x+1,-y,-z+1 | | | | |
| | | | | | |
| MTF-NIF | D-H...A | d(D-H) | d(H...A) | d(D...A) | <(DHA) |
| | C(6)-H(6)...N(7) | 0.93 | 2.29 | 2.883(5) | 121.5 |
| | N(2)-H(2D)...N(4)#1 | 0.86 | 2.77 | 3.399(4) | 131.1 |
| | N(2)-H(2E)...O(1)#1 | 0.86 | 2.60 | 3.236(4) | 131.2 |
| | N(2)-H(2E)...O(2)#1 | 0.86 | 2.18 | 3.035(4) | 174.1 |
| | N(4)-H(4A)...O(2)#2 | 0.86 | 2.27 | 3.063(3) | 153.3 |
| | N(4)-H(4B)...O(1) | 0.86 | 1.98 | 2.828(3) | 167.6 |
| | N(5)-H(5A)...O(1)#3 | 0.86 | 2.14 | 2.950(3) | 156.3 |
| | #1 x-1,y,z #2 x-1/2,-y+1/2,z+1/2 #3 x-1/2,-y+1/2,z-1/2 | | | | |

Table S2 (cont.). Hydrogen bonds for MTF—NSAIDs molecular salts [Å and deg.].

| MTF-NIF·H ₂ O | D-H...A | d(D-H) | d(H...A) | d(D...A) <(DHA) |
|--------------------------|---|--------|----------|------------------|
| | N(2)-H(2D)...O(3)#1 | 0.86 | 2.18 | 2.923(3) 145.0 |
| | N(2)-H(2E)...O(4)#2 | 0.86 | 2.31 | 3.003(3) 138.3 |
| | N(4)-H(4A)...O(1) | 0.86 | 2.15 | 2.915(3) 147.2 |
| | N(4)-H(4B)...O(2)#3 | 0.86 | 2.43 | 3.195(3) 148.1 |
| | N(5)-H(5A)...O(3)#4 | 0.86 | 2.23 | 3.032(4) 156.1 |
| | N(5)-H(5B)...O(2)#3 | 0.86 | 2.25 | 3.057(3) 155.6 |
| | C(6)-H(6)...N(7) | 0.93 | 2.30 | 2.893(4) 120.8 |
| | N(6)-H(6A)...O(1) | 0.86 | 1.91 | 2.628(3) 139.6 |
| | O(3)-H(3A)...O(1) | 0.85 | 1.90 | 2.742(3) 170.9 |
| | O(3)-H(3B)...O(4)#5 | 0.85 | 1.97 | 2.816(3) 170.3 |
| | O(4)-H(4C)...O(2) | 0.85 | 1.96 | 2.808(3) 171.3 |
| | O(4)-H(4D)...O(2)#6 | 0.85 | 2.00 | 2.838(3) 166.4 |
| | #1 x,-y+1/2,z+1/2 #2 -x+2,-y+1,-z+1 #3 -x+2,y+1/2,-z+1/2 | | | |
| | #4 x,y+1,z #5 x,-y+1/2,z-1/2 #6 -x+2,-y,-z+1 | | | |
| | | | | |
| MTF-DIF | D-H...A | d(D-H) | d(H...A) | d(D...A) <(DHA) |
| | N(2)-H(2A)...O(2) | 0.86 | 2.11 | 2.9209(15) 156.9 |
| | N(2)-H(2B)...N(3)#1 | 0.86 | 2.43 | 3.1618(17) 143.5 |
| | N(4)-H(4E)...O(2)#1 | 0.86 | 2.16 | 3.0116(15) 152.7 |
| | N(5)-H(5A)...O(2)#2 | 0.86 | 2.20 | 3.0505(18) 169.2 |
| | N(5)-H(5B)...O(1)#1 | 0.86 | 2.17 | 2.9569(17) 151.3 |
| | C(15)-H(15)...F(1)#3 | 0.93 | 2.57 | 3.180(2) 123.7 |
| | O(3)-H(3)...O(1) | 0.82 | 1.81 | 2.5367(15) 146.7 |
| | #1 -x+1/2,y+1/2,-z+1/2 #2 -x+1/2,y-1/2,-z+1/2 #3 x,-y+2,z+1/2 | | | |
| | | | | |
| MTF-FLP | D-H...A | d(D-H) | d(H...A) | d(D...A) <(DHA) |
| | N(2)-H(2A)...O(1)#1 | 0.86 | 2.11 | 2.866(2) 146.6 |
| | N(4)-H(4A)...O(2) | 0.86 | 1.95 | 2.791(3) 165.6 |
| | N(4)-H(4B)...O(2)#2 | 0.86 | 2.07 | 2.861(3) 152.6 |
| | N(5)-H(5A)...O(1) | 0.86 | 2.01 | 2.867(3) 175.5 |
| | N(5)-H(5B)...N(3)#3 | 0.86 | 2.30 | 3.152(3) 171.3 |
| | #1 x+1,y,z #2 -x+2,-y+1,-z+1 #3 -x+2,-y+1,-z+2 | | | |

Table S3. π,π -stacking interactions analysis of compounds MTF—MEF, MTF—TLP and MTF—FLP.

MTF—MEF

| | | | | | | | | | | | | | | | | |
|--------------------------|----------|-------|-----|----------|--------------------------------------|-----------------------|---------|----------|-------|------|-----------|-----------|----------|----------|--|--|
| 6-Membered Ring (1) | | C5 | --> | C6 | --> | C8 | --> | C10 | --> | C11 | --> | C12 | --> | | | |
| 6-Membered Ring (2) | | C13 | --> | C14 | --> | C15 | --> | C16 | --> | C17 | --> | C18 | --> | | | |
| Cg(I) | Res(I) | Cg(J) | [| ARU(J)] | Cg-Cg Transformed J-Plane P, Q, R, S | | | | Alpha | Beta | Gamma | CgI_Perp | CgJ_Perp | Slippage | | |
| Cg1 | [1] -> | Cg1 | [| 3556.01] | 4.0614(11) | -0.0357-0.1565-0.9870 | -5.2777 | 0.02(8) | 29.3 | 29.3 | 3.5431(7) | 3.5431(7) | 1.985 | MEF-MEF | | |
| Cg1 | [1] -> | Cg2 | [| 4555.01] | 5.0184(11) | 0.6398 0.6413-0.4236 | -8.4282 | 72.85(8) | 25.9 | 46.9 | 3.4282(7) | 4.5130(6) | | | | |
| Cg2 | [1] -> | Cg1 | [| 3566.01] | 5.4305(13) | -0.0357-0.1565-0.9870 | -6.6412 | 60.29(8) | 33.4 | 86.3 | 0.3495(6) | 4.5334(7) | | | | |
| Cg2 | [1] -> | Cg1 | [| 4554.01] | 5.0184(11) | 0.0357-0.1565 0.9870 | 1.0898 | 72.85(8) | 46.9 | 25.9 | 4.5129(6) | 3.4282(7) | | | | |
| | | | | | ----- | | | | | | | | | | | |
| | | | | | Min or Max | 4.061 | | 0.0 | 25.9 | 86.3 | -3.543 | -4.533 | | | | |
| [3556] = -X,-Y,1-Z | | | | | | | | | | | | | | | | |
| [4555] = X,1/2-Y,1/2+Z | | | | | | | | | | | | | | | | |
| [3566] = -X,1-Y,1-Z | | | | | | | | | | | | | | | | |
| [4554] = X,1/2-Y,-1/2+Z | | | | | | | | | | | | | | | | |

MTF—TLF

| | | | | | | | | | | | | | | | | | | | | | | | | | |
|--------------------------|---------|-------|---|----------|--------------------------------------|---------|---------|---------|----------|-----------|------|-------|------------|------------|----------|----------------|-----|-----|-----|-----|-----|-----|-----|-----|-----|
| 6-Membered Ring (1) | | | | | | | | | | | | | | C5 | --> | C6 | --> | C8 | --> | C9 | --> | C10 | --> | C11 | --> |
| 6-Membered Ring (2) | | | | | | | | | | | | | | C12 | --> | C13 | --> | C14 | --> | C15 | --> | C16 | --> | C17 | --> |
| Cg(I) | Res(I) | Cg(J) | [| ARU(J)] | Cg-Cg Transformed J-Plane P, Q, R, S | | | | | Alpha | Beta | Gamma | CgI_Perp | CgJ_Perp | Slippage | | | | | | | | | | |
| Cg1 | [1] -> | Cg1 | [| 3576.01] | 3.9352(16) | -0.0211 | 0.1851 | -0.9825 | -3.6984 | 0.00(12) | 29.4 | 29.4 | 3.4277(10) | 3.4276(10) | 1.933 | TLF-TLF | | | | | | | | | |
| Cg1 | [1] -> | Cg2 | [| 4565.01] | 5.0454(15) | 0.6334 | -0.6491 | -0.4212 | -14.2733 | 73.72(12) | 28.6 | 45.1 | 3.5585(12) | 4.4308(10) | | | | | | | | | | | |
| Cg2 | [1] -> | Cg1 | [| 3566.01] | 5.3150(17) | -0.0211 | 0.1851 | -0.9825 | -5.3098 | 58.63(12) | 32.1 | 89.2 | 0.0702(10) | 4.5011(12) | | | | | | | | | | | |
| Cg2 | [1] -> | Cg1 | [| 4564.01] | 5.0454(15) | 0.0211 | 0.1851 | 0.9825 | 2.5195 | 73.72(12) | 45.1 | 28.6 | 4.4307(10) | 3.5586(12) | | | | | | | | | | | |
| Min or Max | | | | | 3.935 | | | | | | 0.0 | 28.6 | 89.2 | -3.428 | -4.501 | | | | | | | | | | |
| [3576] = -X,2-Y,1-Z | | | | | | | | | | | | | | | | | | | | | | | | | |
| [4565] = X,3/2-Y,1/2+Z | | | | | | | | | | | | | | | | | | | | | | | | | |
| [3566] = -X,1-Y,1-Z | | | | | | | | | | | | | | | | | | | | | | | | | |
| [4564] = X,3/2-Y,-1/2+Z | | | | | | | | | | | | | | | | | | | | | | | | | |

Table S3 (cont.). π,π -stacking interactions analysis of compounds MTF—MEF, MTF—TLP and MTF—FLP.

MTF—FLP

| | | | | | | | | | | | | |
|----------------------|-----|-----|-----|-----|-----|-----|-----|-----|-----|-----|-----|-----|
| 6-Membered Ring (1) | C5 | --> | C6 | --> | C7 | --> | C8 | --> | C9 | --> | C10 | --> |
| 6-Membered Ring (2) | C11 | --> | C12 | --> | C13 | --> | C14 | --> | C15 | --> | C16 | --> |

| Cg(I) Res(I) | Cg(J) | [ARU(J)] | Cg-Cg Transformed J-Plane P, Q, R, S | | | | | Alpha | Beta | Gamma | CgI_Perp | CgJ_Perp | Slippage |
|-----------------|------------|------------|--------------------------------------|---------|---------|----------|-----------|-------|------|------------|------------|----------|----------------|
| Cg1 [1] -> Cg1 | [2557.01] | 4.015(2) | -0.4231 | -0.2882 | -0.8590 | -10.4389 | 0.00(16) | 17.4 | 17.4 | 3.8302(13) | 3.8303(13) | 1.202 | FLP-FLP |
| Cg1 [1] -> Cg2 | [2556.01] | 4.9080(18) | 0.1215 | -0.7915 | -0.5990 | -1.3000 | 46.27(14) | 11.4 | 40.0 | 3.7580(13) | 4.8113(11) | | |
| Cg2 [1] -> Cg1 | [2556.01] | 4.9079(18) | -0.4231 | -0.2882 | -0.8590 | -1.9151 | 46.27(14) | 40.0 | 11.4 | 4.8113(11) | 3.7579(13) | | |
| | | ----- | | | | | | | | | | | |
| | | Min or Max | 4.015 | | | | | 0.0 | 11.4 | 40.0 | -4.811 | -4.811 | |

| |
|---------------------|
| [2557] = -X,-Y,2-Z |
| [2556] = -X,-Y,1-Z |