

Nanostructured Microparticles Repolarize Macrophages and Induce Cell Death in an In Vitro Model of Tumour-Associated Macrophages

Supplemental Figure S1

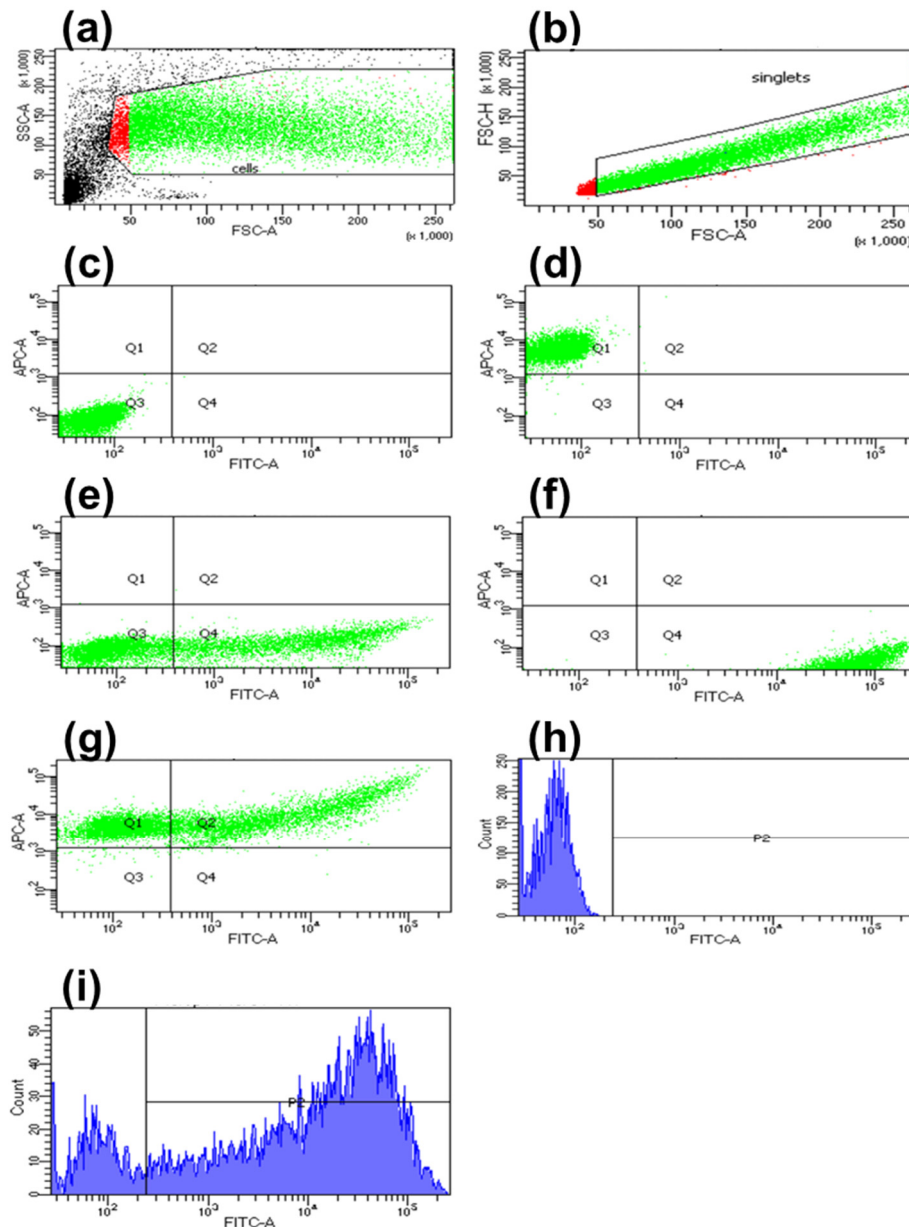


Figure S1. Flow cytometric gating strategy for μ R uptake analysis. HMDMs (M0) were incubated with green fluorescent μ Rs (2 μ Rs/ cell, FITC) and stained with CellTracker™ Deep Red Dye (APC). (a) Events in FSC-A vs. SSC-A. (b) Singlets in FSC-H vs. FSC-A. (c) Unstained cells in APC-A vs. FITC-A (Q3). (d) Stained cells (Q1). (e) Unstained cells containing μ Rs (Q4). (f) μ Rs (Q4). (g) Stained cells containing μ Rs (Q2), Q1 and Q2 were used for evaluation. Representative histogram of cells without μ Rs (h) and with μ Rs (i). P2: FITC-positive events.