

Synergistic Enhancement of Carboplatin Efficacy through pH-Sensitive Nanoparticles Formulated Using Naturally Derived Boswellia Extract for Colorectal Cancer Therapy

Sherif Ashraf Fahmy ^{1,2,*†}, Nada K. Sedky ^{3,†}, Hatem A. F. M. Hassan ^{4,5}, Nour M. Abdel-Kader ^{3,6}, Noha Khalil Mahdy ⁵, Muhammad Umair Amin ², Eduard Preis ² and Udo Bakowsky ^{2,*}

¹ Department of Chemistry, School of Life and Medical Sciences, University of Hertfordshire Hosted by Global Academic Foundation, R5 New Garden City, New Administrative Capital, Cairo 11835, Egypt

² Department of Pharmaceutics and Biopharmaceutics, University of Marburg, Robert-Koch-Str. 4, 35037 Marburg, Germany; muhammad.umairamin@pharmazie.uni-marburg.de (M.U.A.); eduard.preis@pharmazie.uni-marburg.de (E.P.)

³ Department of Biochemistry, School of Life and Medical Sciences, University of Hertfordshire Hosted by Global Academic Foundation, R5 New Garden City, New Administrative Capital, Cairo 11835, Egypt; nadasedky22@gmail.com (N.K.S.); nmohamed@gaf.edu.eg (N.M.A.-K.)

⁴ Medway School of Pharmacy, Universities of Kent and Greenwich, Chatham Maritime, Kent ME4 4TB, UK; hatem.hassan@pharma.cu.edu.eg

⁵ Department of Pharmaceutics and Industrial Pharmacy, Faculty of Pharmacy, Cairo University, Cairo 11562, Egypt; nkmahdy@gmail.com

⁶ Department of Biochemistry, Faculty of Science, Ain Shams University, Cairo 11566, Egypt

* Correspondence: sheriffahmy@aucegypt.edu (S.A.F.); ubakowsky@aol.com (U.B.)

† These authors contributed equally to this work.

Supplementary Material

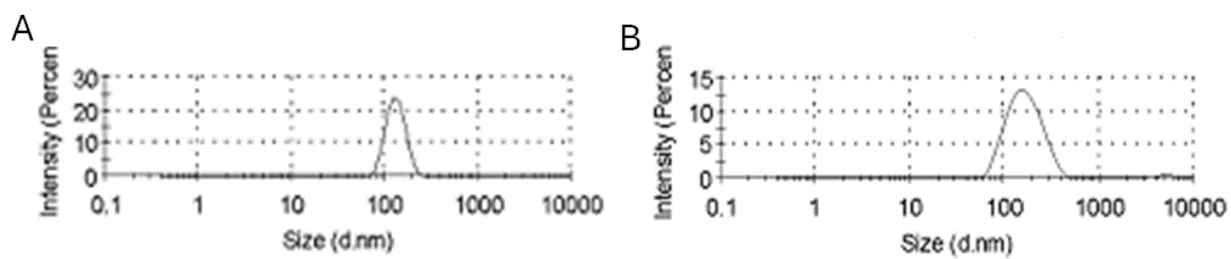


Figure S1. Size distribution curves of (A) BME NPs and (B) Cp@CS/BME NPs.