

# Influence of Mechanical Loading on the Process of Tribochemical Action on Physicochemical and Biopharmaceutical Properties of Substances, Using Lacosamide as an Example: From Micronisation to Mechanical Activation

Elena V. Uspenskaya, Ekaterina Kuzmina, Hoang Thi Ngoc Quynh, Maria A. Komkova, Ilaha V. Kazimova and Aleksey A. Timofeev

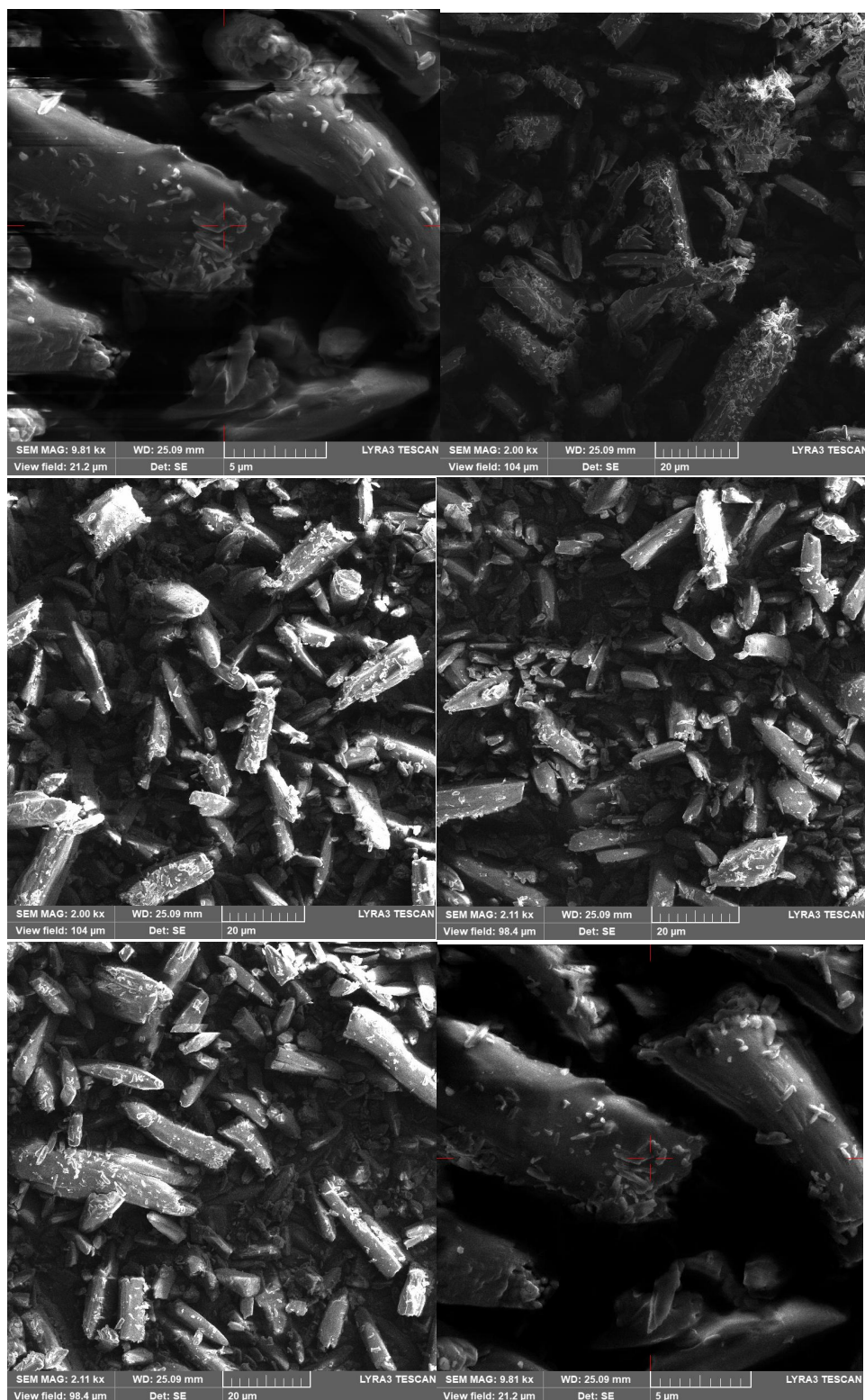


Figure S1: SEM micrographs for Lcs native obtained at  $t = 0$  min of high-intensity ML. Device magnification (MAG) MAG = 9.81–2.11kx.

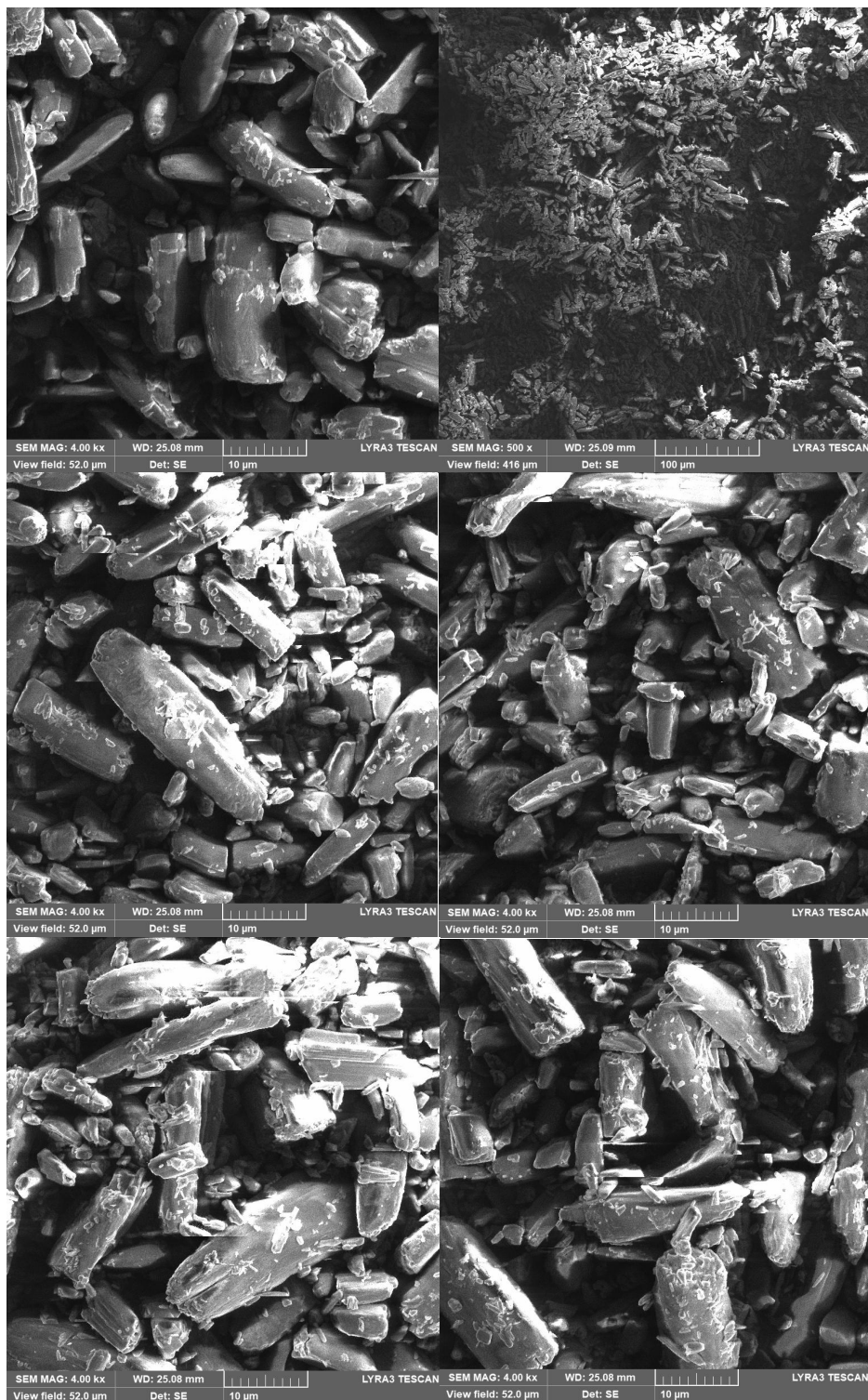


Figure S2: SEM micrographs for Lcs obtained at  $t = 60$  min of high-intensity ML. Device magnification (MAG) MAG = 4.00kx–500x.

## Supplementary Material

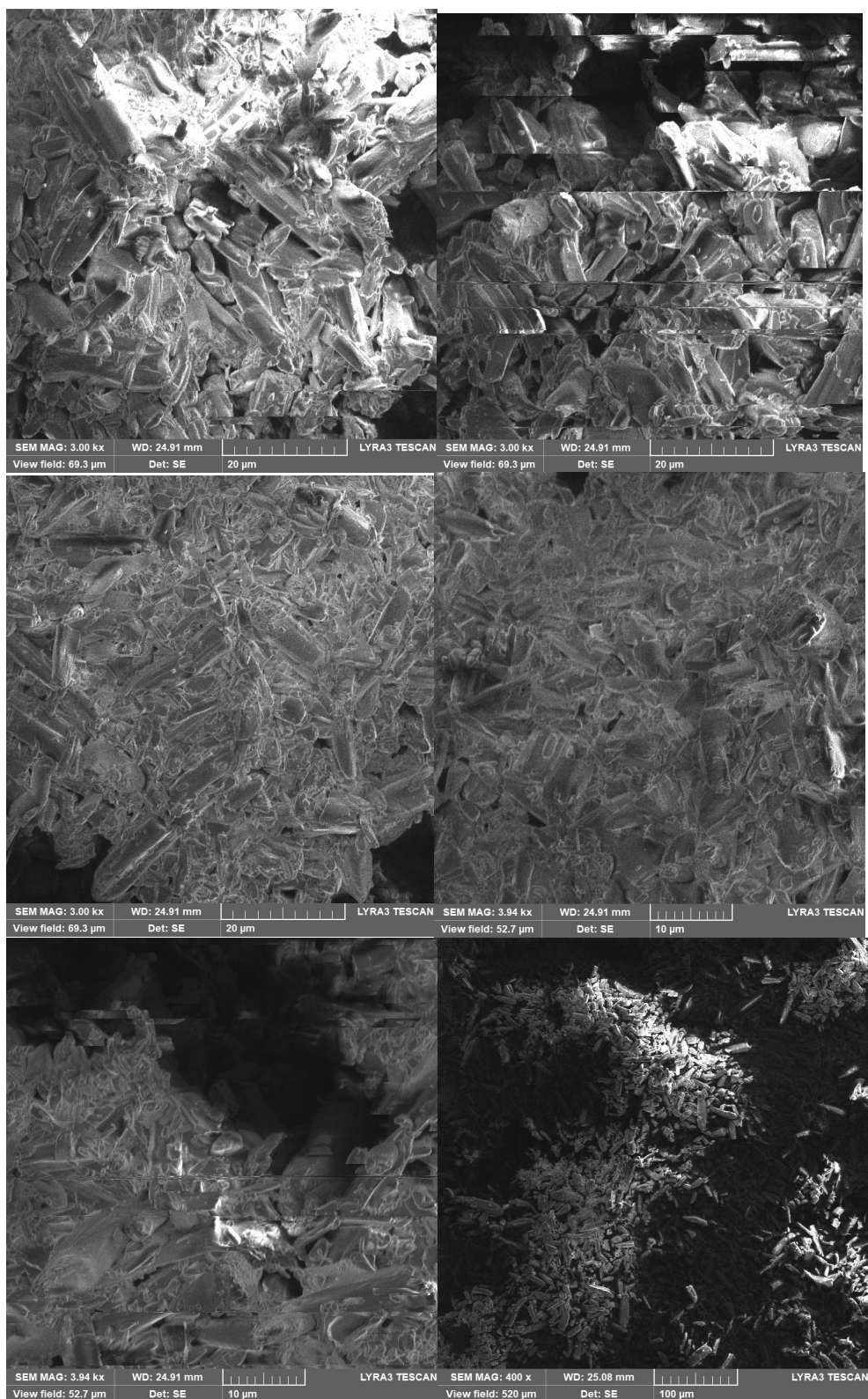


Figure S3: SEM micrographs for Lcs obtained at  $t = 90$  min of high-intensity ML. Device magnification (MAG) MAG = 3.00kx–400x.