

Table S1 – Curve Fit for the Toxicity Studies

		Curve Fit Equation	R ²
HA-R	A1G11	$2.0 + [(99.3 - 2.0) / (1 + (X/13.3)^{4.3})]$	0.999
	SH-SY5Y	$-92.2 + [(99.9 + 92.2) / (1 + (X/95.0)^{1.1})]$	0.980
	H4	$1.7 + [(84.7 - 1.7) / (1 + (X/30.9)^{8.1})]$	0.970
	HEK293	$-10.3 + [(95.7 + 10.3) / (1 + (X/29.6)^{2.0})]$	0.976
	N9	$-5.8 \times 10^7 + [(91.8 + 5.8 \times 10^7) / (1 + (X/2.5 \times 10^6)^{1.3})]$	0.966
Res	A1G11	$2.2 + [(100.0 - 2.2) / (1 + (X/6.1)^{4.6})]$	0.999
	SH-SY5Y	$1.2 + [(100.0 - 1.2) / (1 + (X/14.5)^{4.4})]$	0.983
	H4	$0.5 + [(94.0 - 0.5) / (1 + (X/21.2)^{4.4})]$	0.996
	HEK293	$1.8 + [(85.3 - 1.8) / (1 + (X/4.5)^{3.5})]$	0.956
	N9	$-0.6 + [(88.3 + 0.6) / (1 + (X/28.0)^{4.6})]$	0.980
HA	A1G11	$86.2 + [(102.6 - 86.2) / (1 + (X/25.4)^{3.6})]$	0.955
	SH-SY5Y	$-6.4 \times 10^7 + [(106.2 + 6.4 \times 10^7) / (1 + (X/2.8 \times 10^6)^{1.4})]$	0.679
	H4	$1.8 \times 10^7 + [(94.3 - 1.8 \times 10^7) / (1 + (X/1.3 \times 10^5)^{1.9})]$	0.873
	HEK293	$82.6 + [(101.1 - 82.6) / (1 + (X/16.5)^{1.4})]$	0.976
	N9	$-1.0 \times 10^7 + [(97.4 + 1.0 \times 10^7) / (1 + (X/2.9 \times 10^3)^{3.6})]$	0.975

Table S2 – ANOVA with Tukey post hoc test for the IC₅₀ (p-values)

		HA-R				
		A1G11	SH-SY5Y	H4	HEK293	N9
HA-R	A1G11	---	0.001	0.001	0.001	0.001
	SH-SY5Y	---	---	0.032	0.001	0.001
	H4	---	---	---	0.728	0.001
	HEK293	---	---	---	---	0.001
	Fib	---	---	---	---	---
		Res				
		A1G11	SH-SY5Y	H4	HEK293	N9
HA-R	A1G11	0.038	0.900	0.025	0.001	0.001
	SH-SY5Y	0.001	0.001	0.001	0.001	0.001
	H4	0.001	0.001	0.001	0.001	0.039
	HEK293	0.001	0.001	0.032	0.001	0.649
	N9	0.001	0.001	0.001	0.001	0.001
		Res				
		A1G11	SH-SY5Y	H4	HEK293	N9
Res	A1G11	---	0.002	0.001	0.704	0.001
	SH-SY5Y	---	---	0.325	0.001	0.009
	H4	---	---	---	0.001	0.678
	HEK293	---	---	---	---	0.001
	N9	---	---	---	---	---

Figure S1 – Comparison of the phase contrast images of A1G11, SH-SY5Y, H4, HEK 293, and N9 cells exposed to HA-R and resveratrol with 1% ethanol

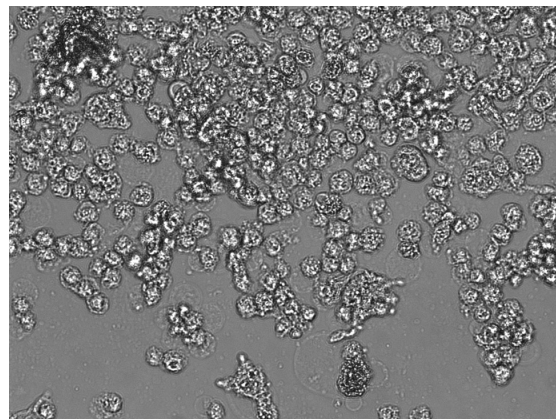
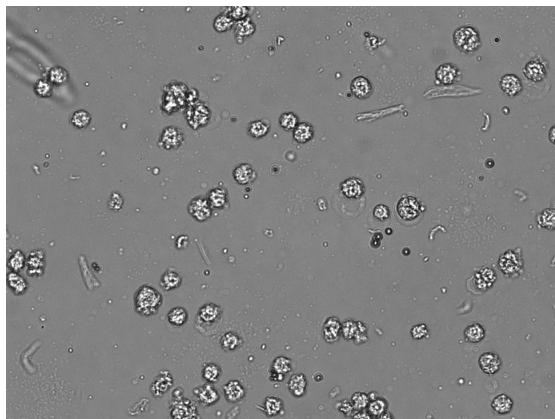
A1G11

HA-R

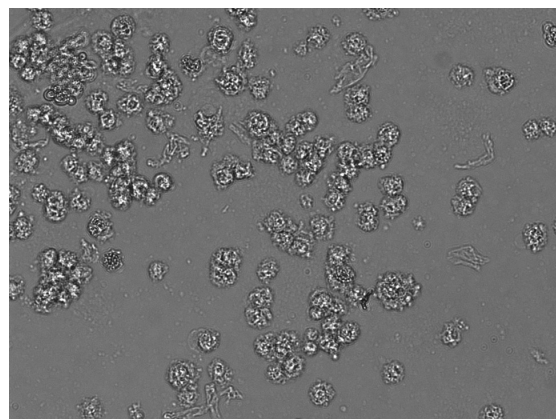
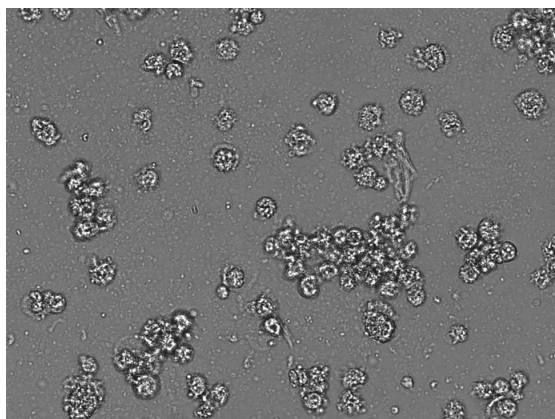
Res. with Ethanol

Concentration
[μ M]

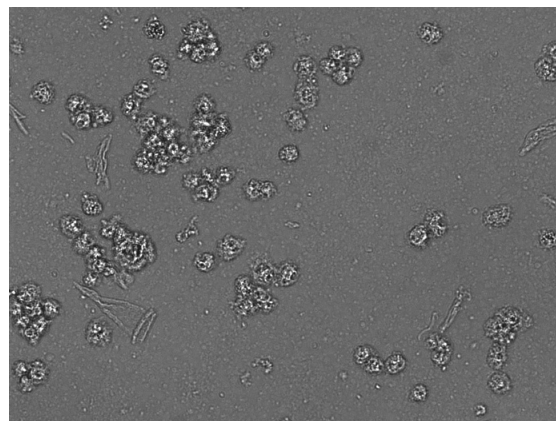
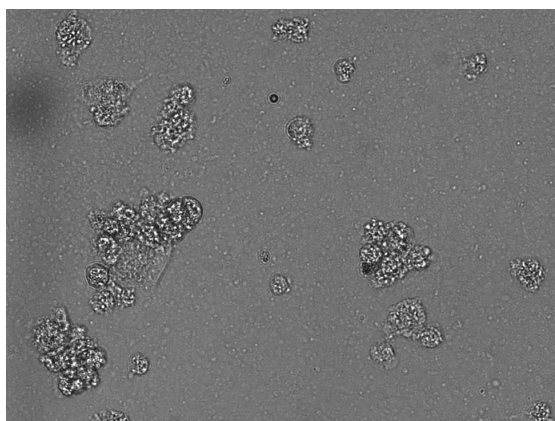
100



50



25

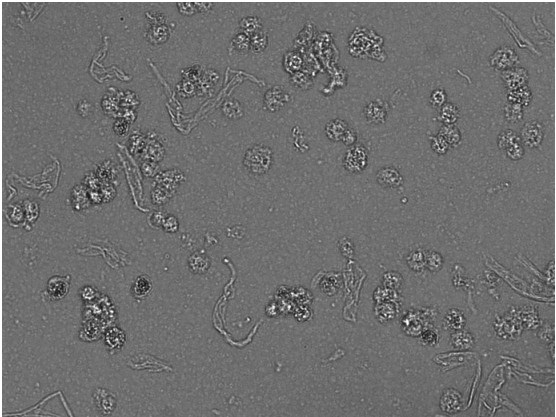
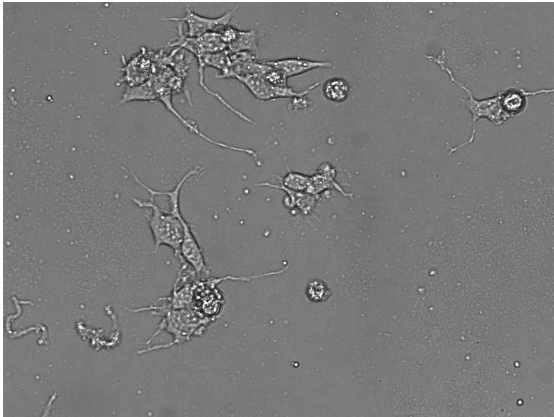


A1G11

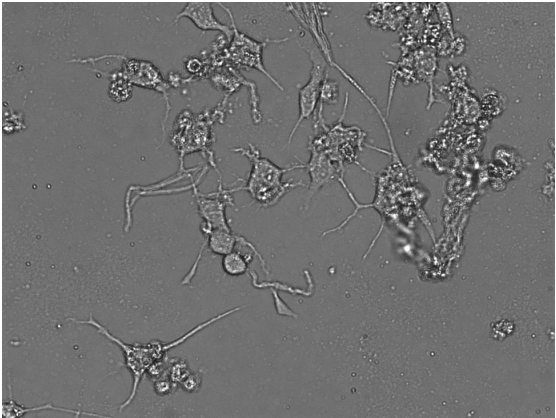
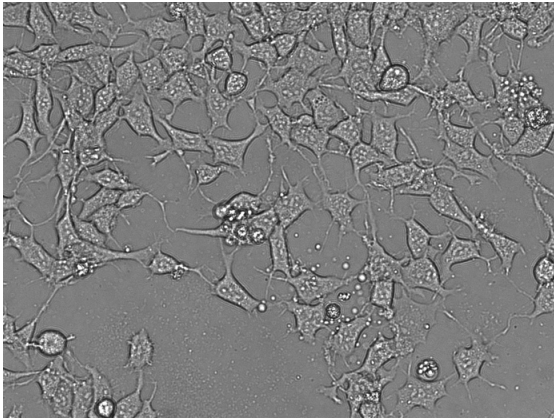
HA-R

Res. with Ethanol

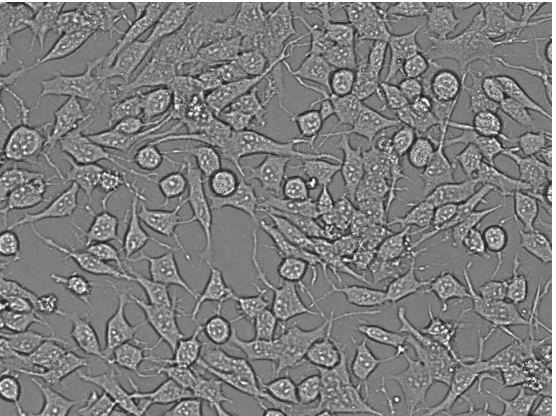
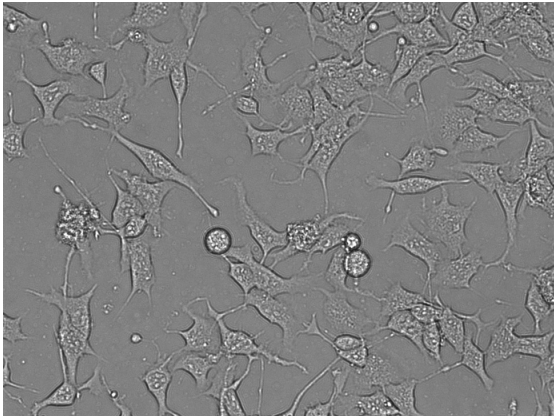
12.5



6.3



3.1

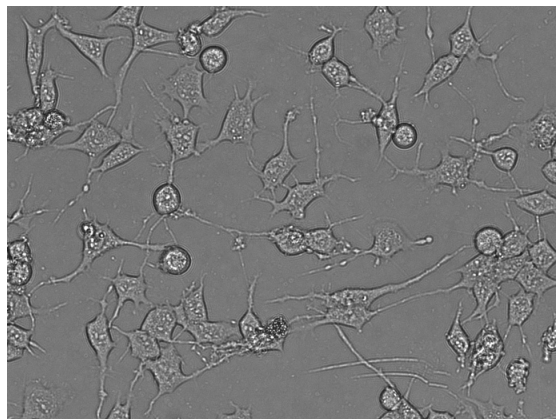
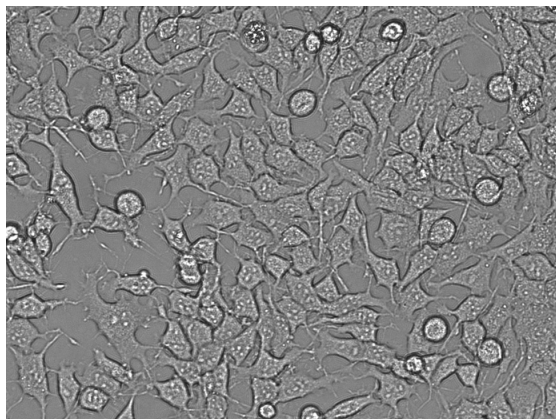


A1G11

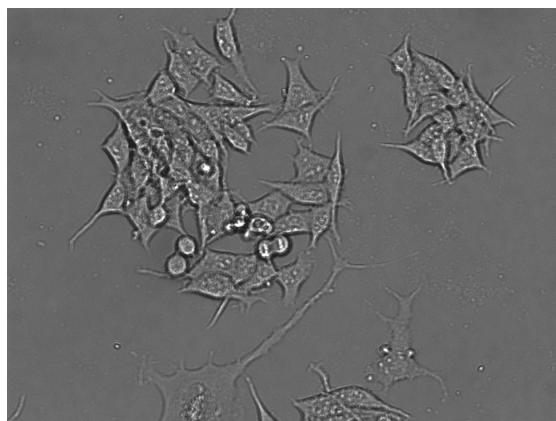
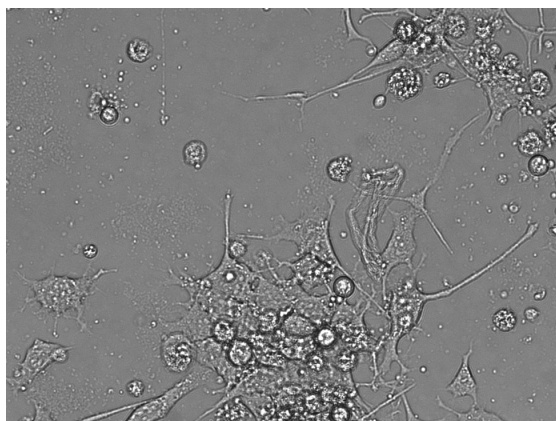
HA-R

Res. with Ethanol

1.5



0

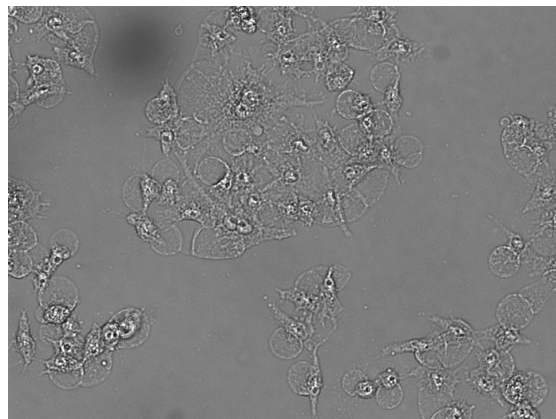
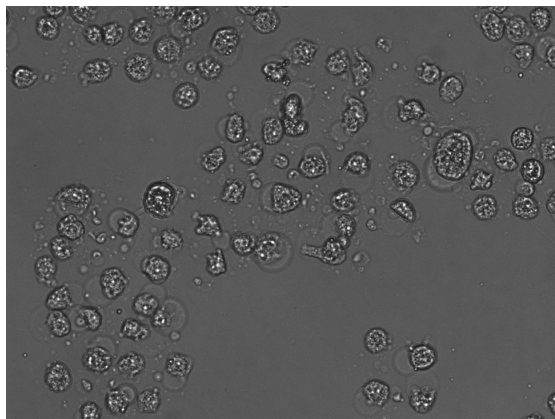


SH-SY5Y
Concentration
[μ M]

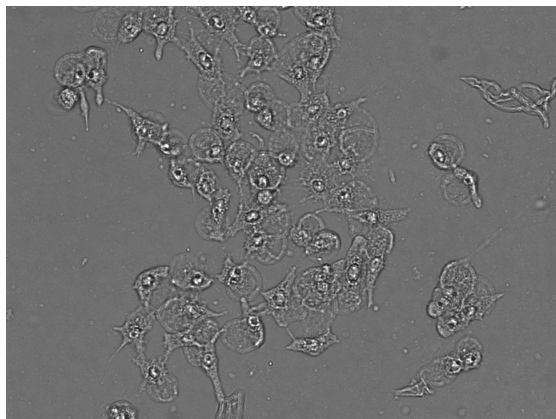
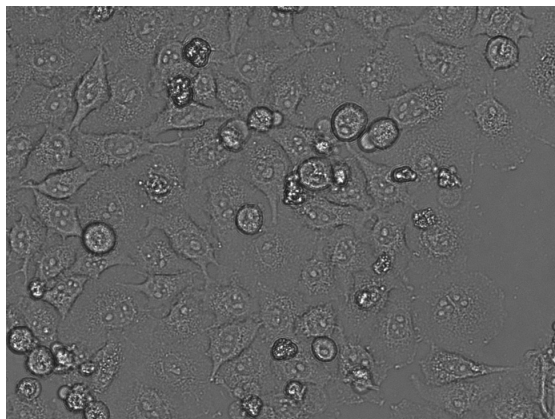
HA-R

Res. with Ethanol

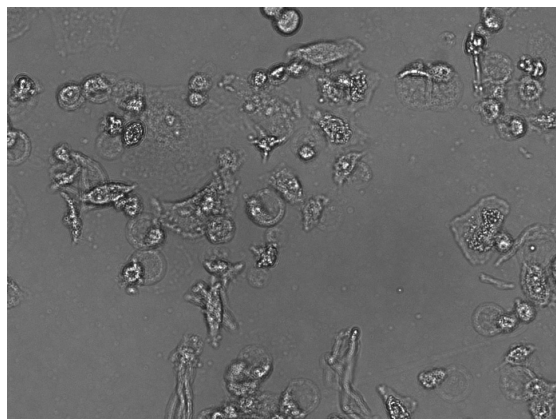
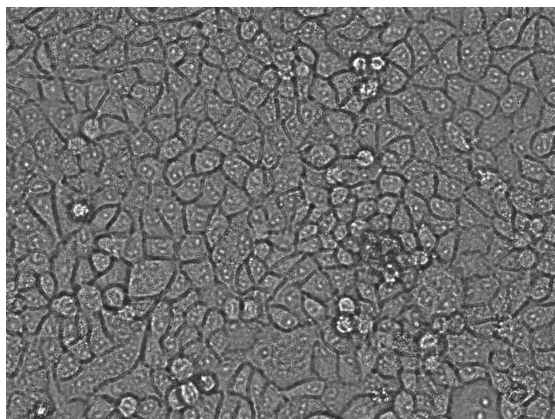
100



50



25

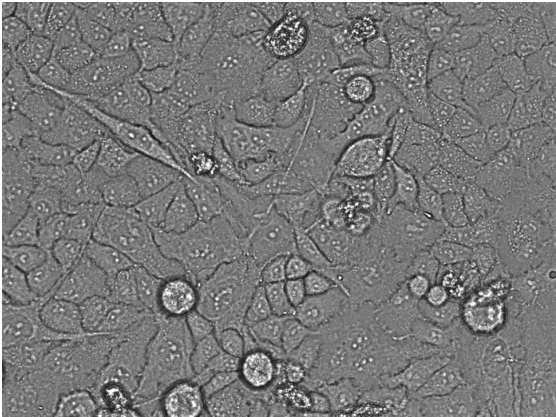
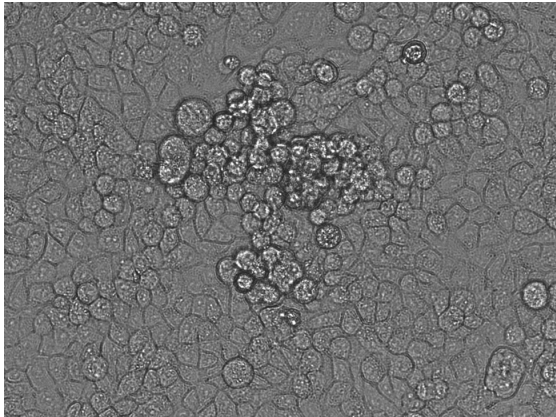


SH-SY5Y

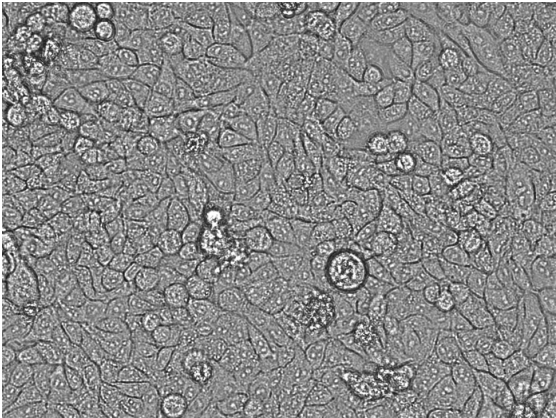
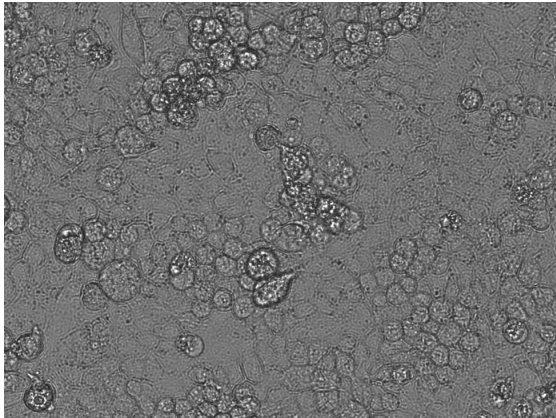
HA-R

Res. with Ethanol

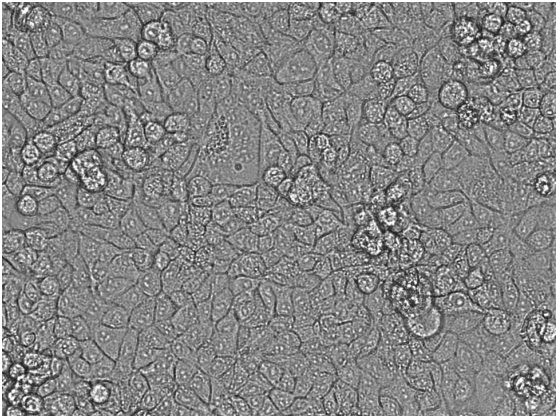
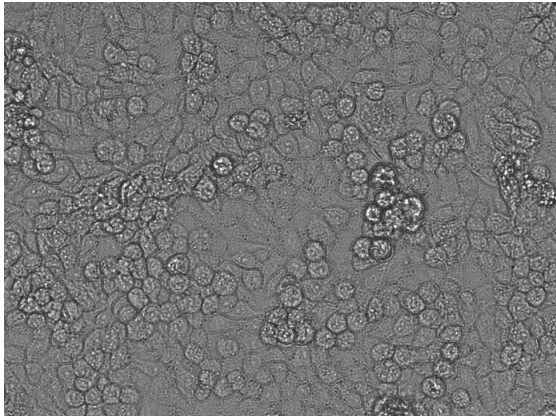
12.5



6.3



3.1

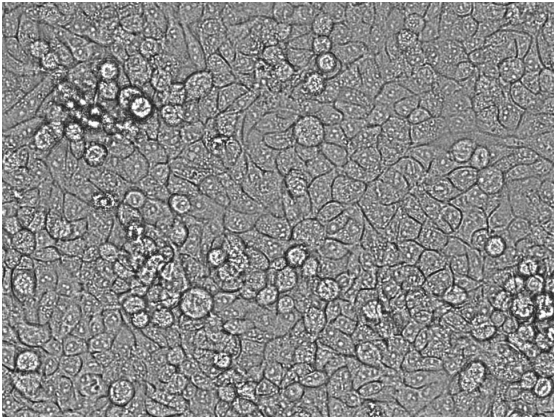
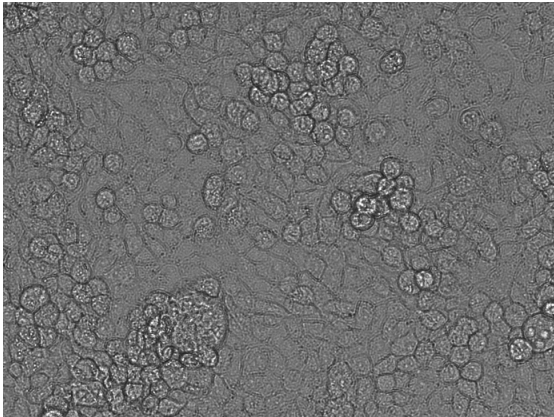


SH-SY5Y

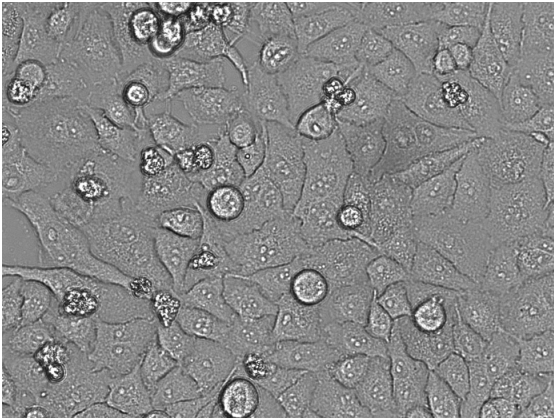
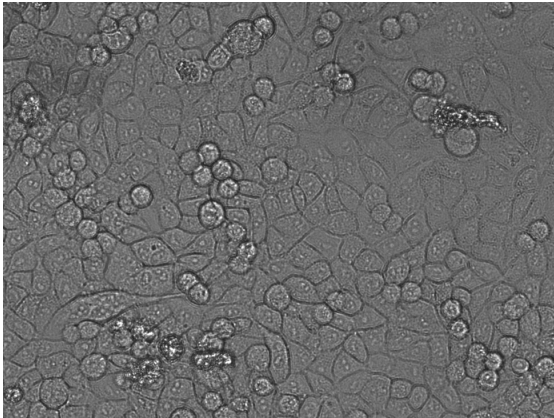
HA-R

Res. with Ethanol

1.5



0



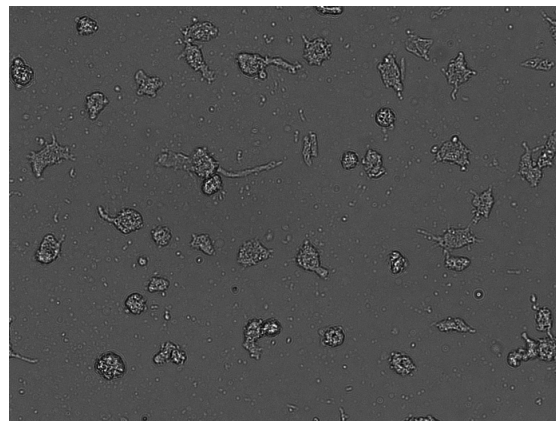
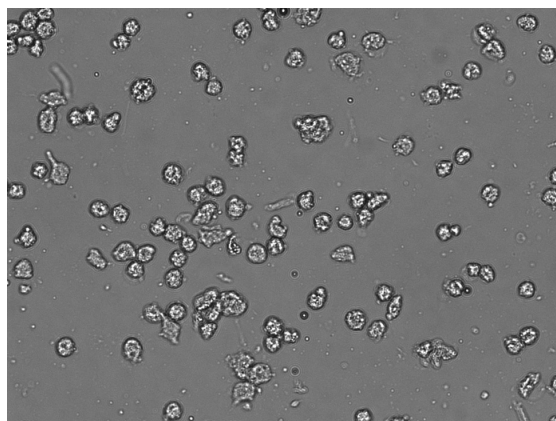
H4

HA-R

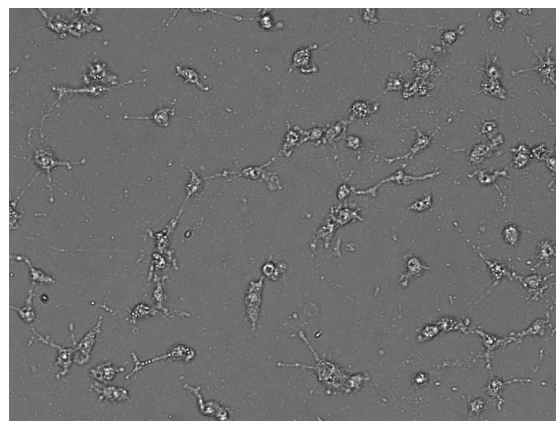
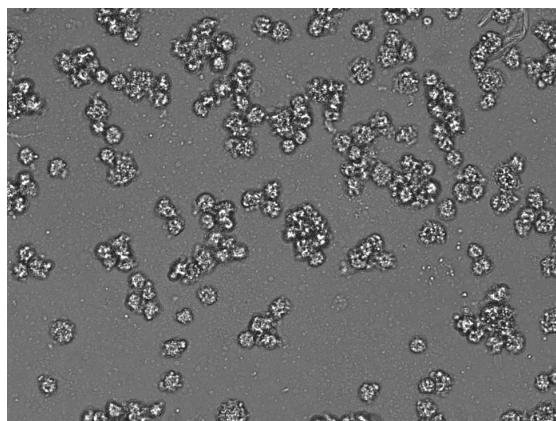
Res. with Ethanol

Concentration
[μ M]

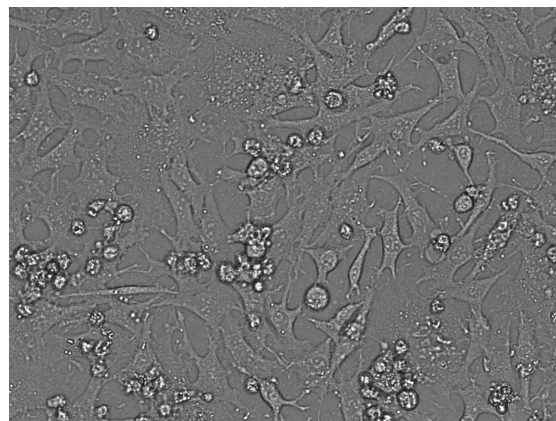
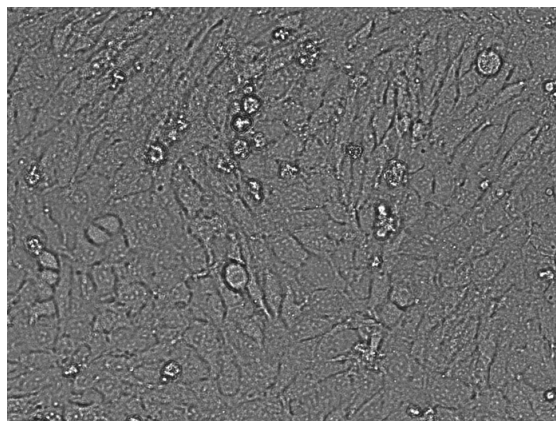
100



50



25

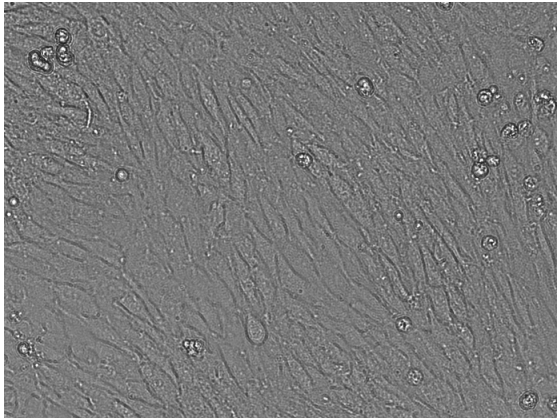
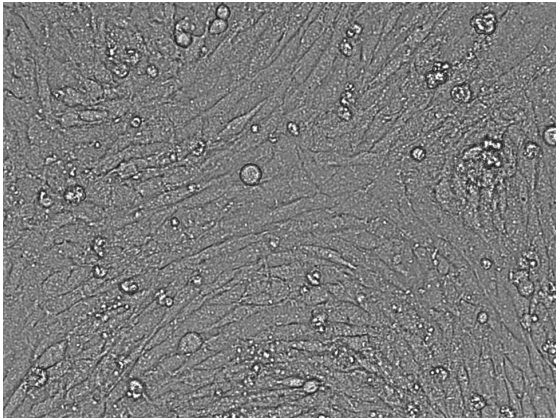


H4

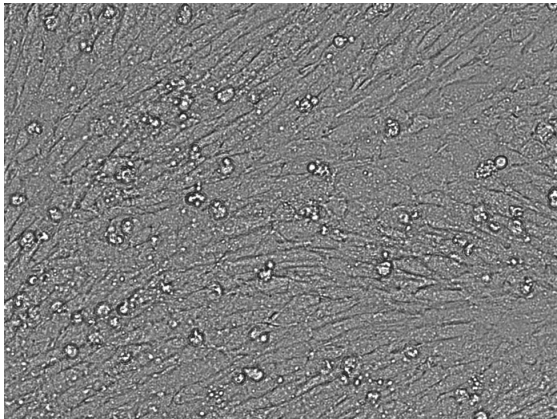
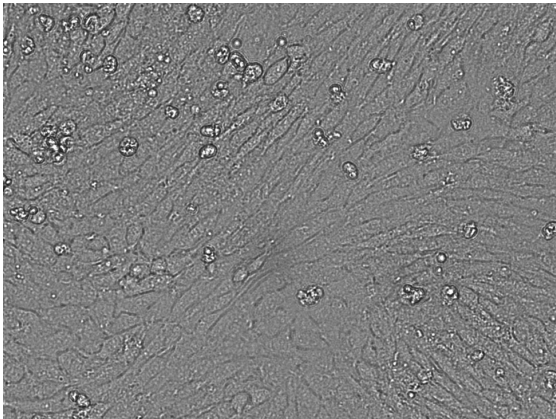
HA-R

Res. with Ethanol

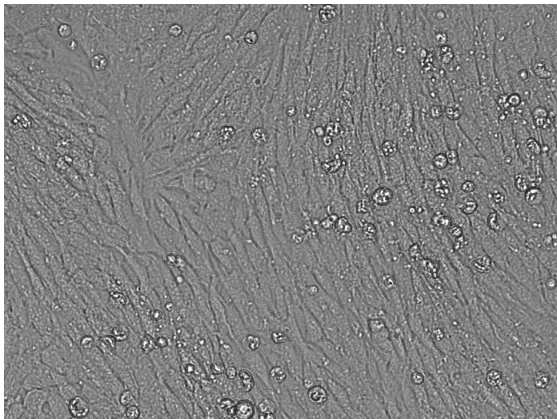
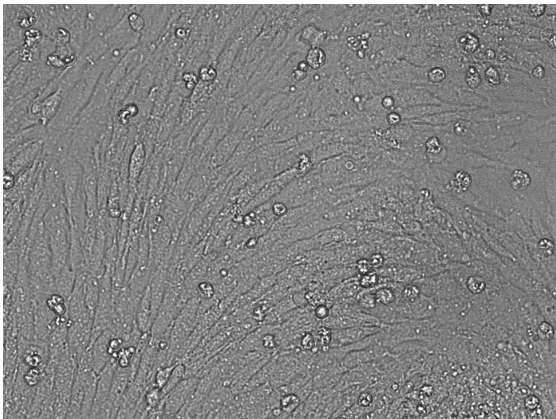
12.5



6.3



3.1

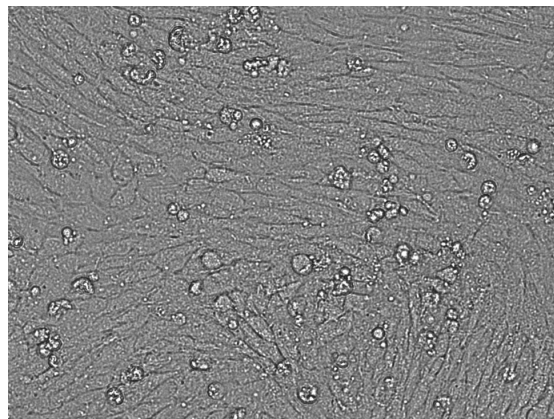
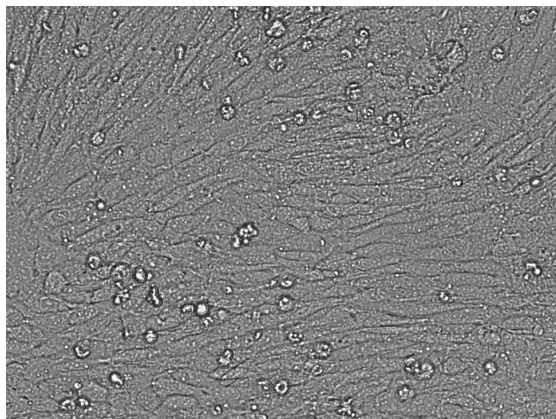


H4

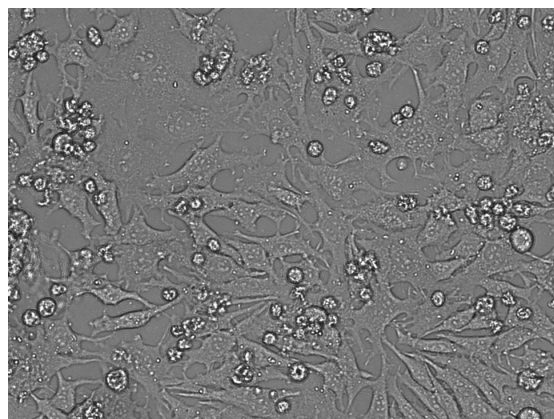
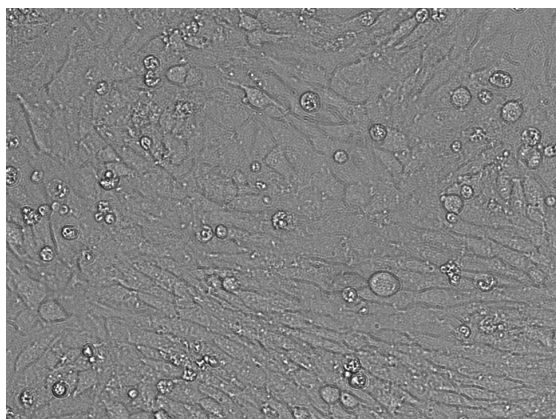
HA-R

Res. with Ethanol

1.5



0



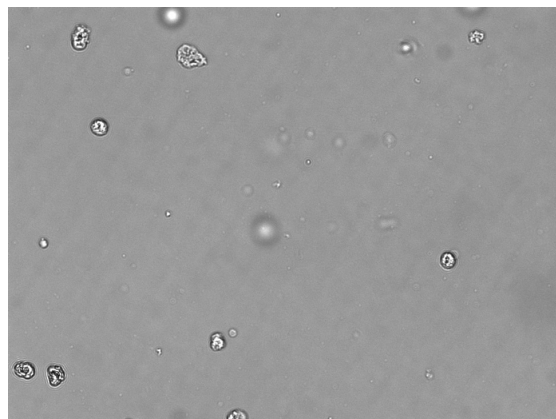
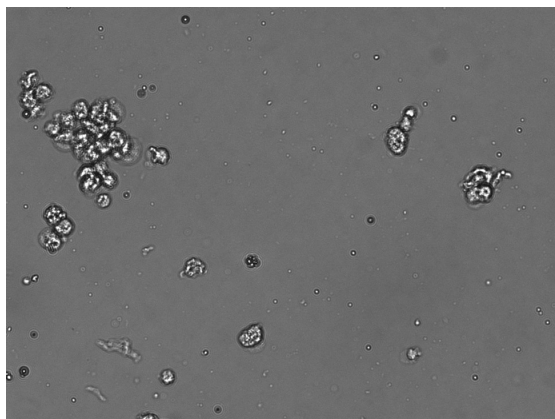
HEK293

HA-R

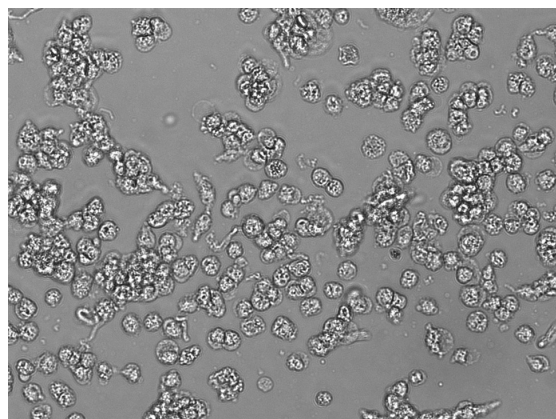
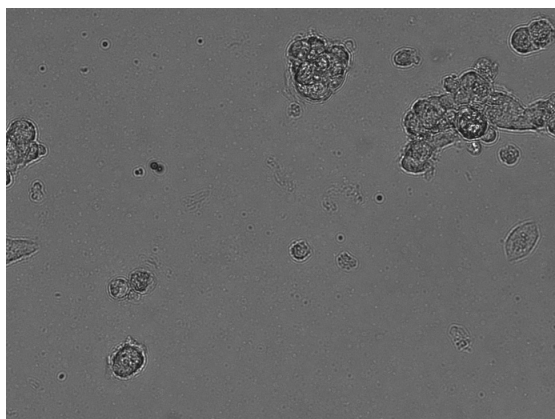
Res. with Ethanol

Concentration
[μ M]

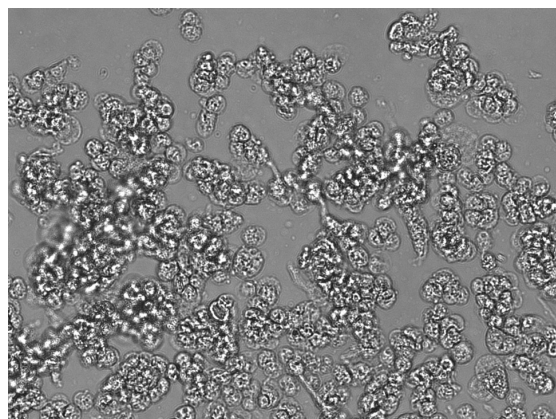
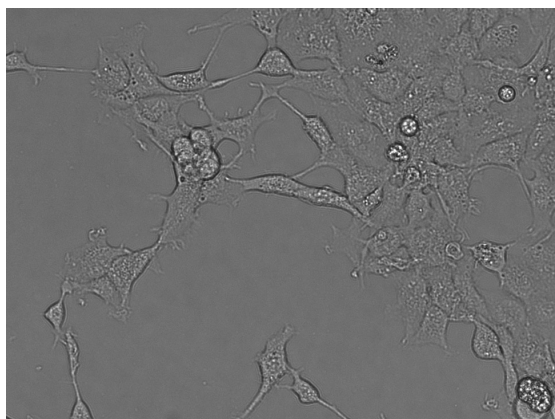
100



50



25

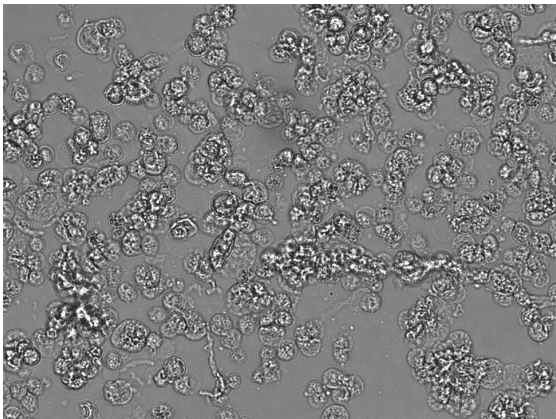
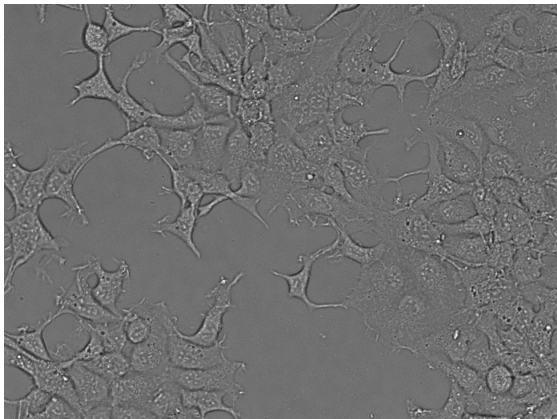


HEK293

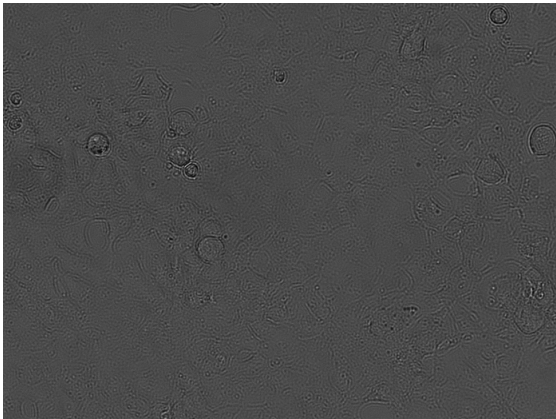
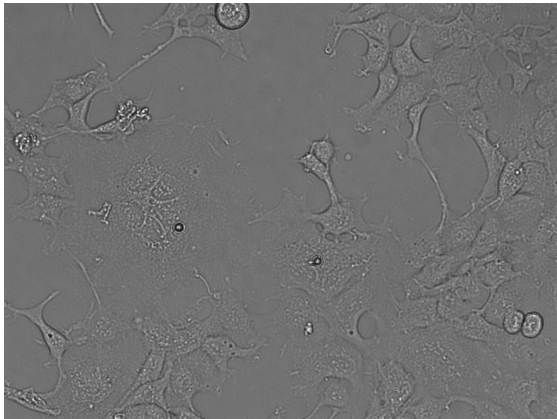
HA-R

Res. with Ethanol

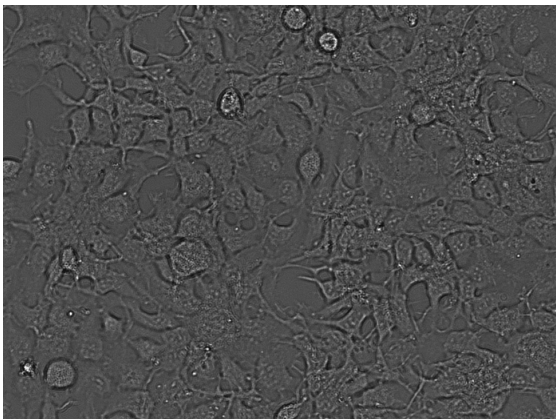
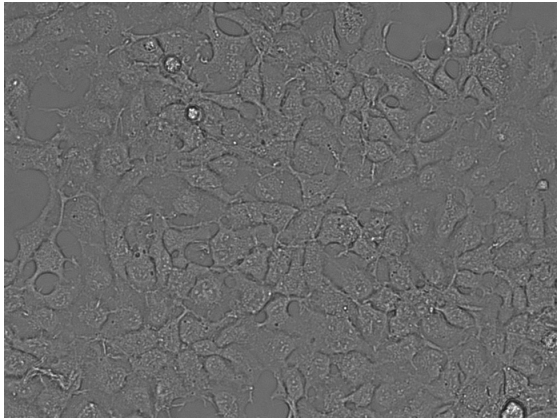
12.5



6.3



3.1

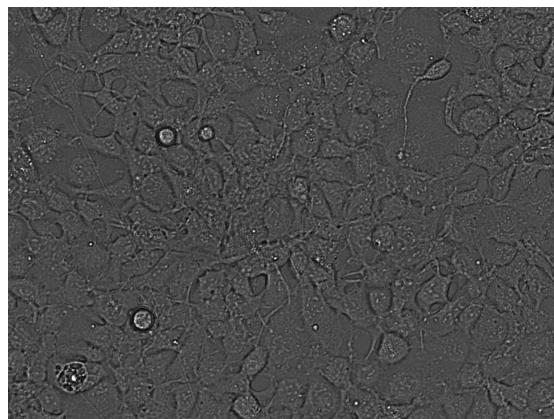
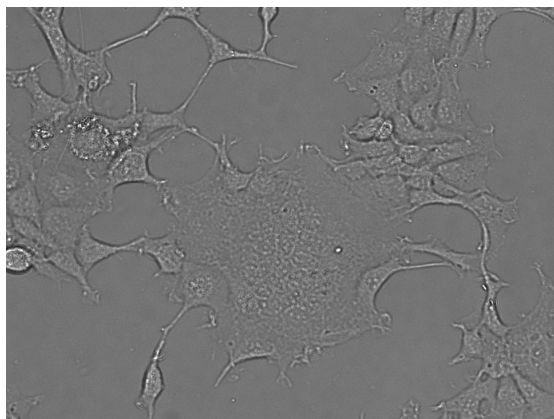


HEK293

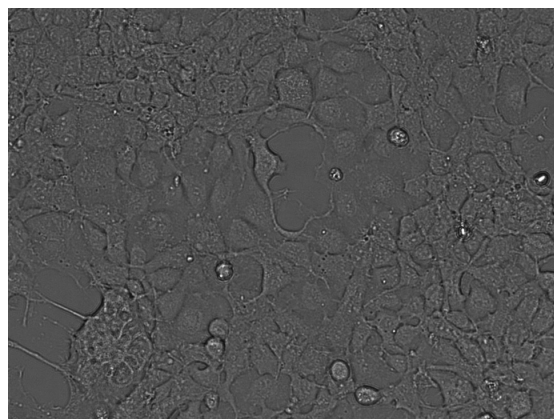
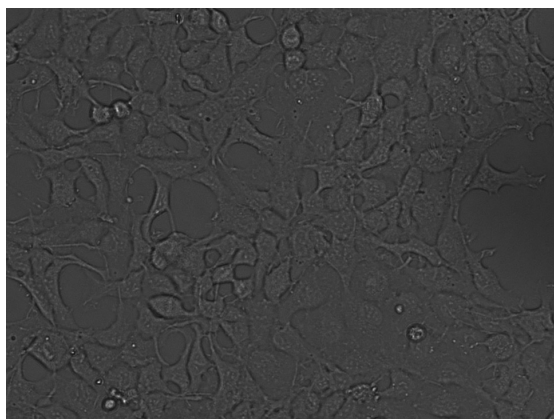
HA-R

Res. with Ethanol

1.5

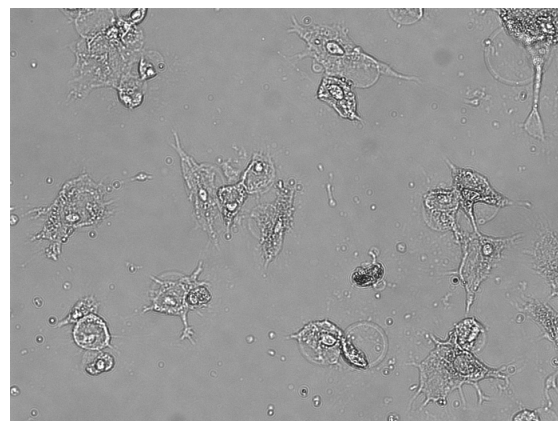
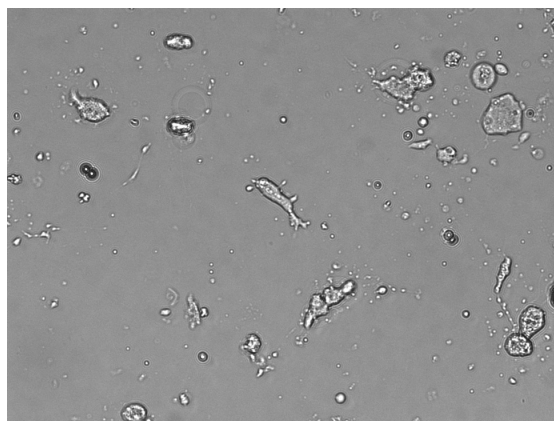


0

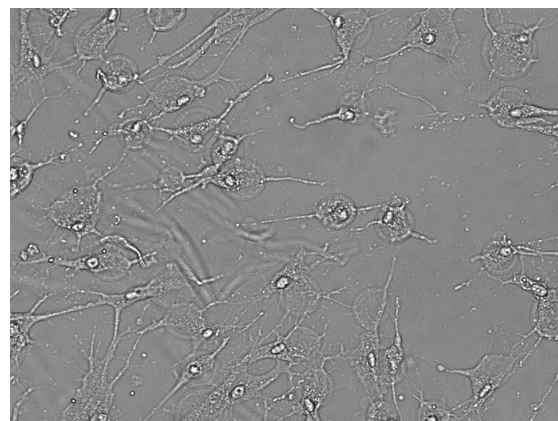
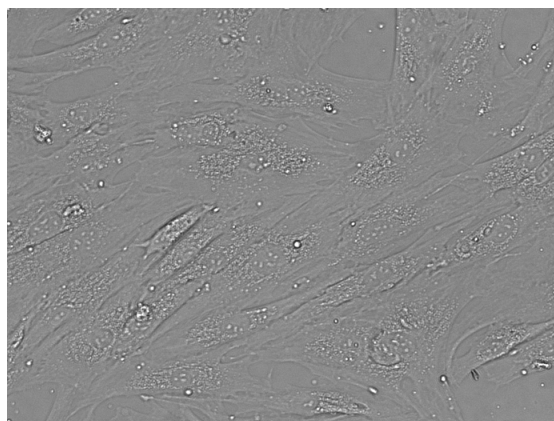


Fibroblast
Concentration
[μ M]

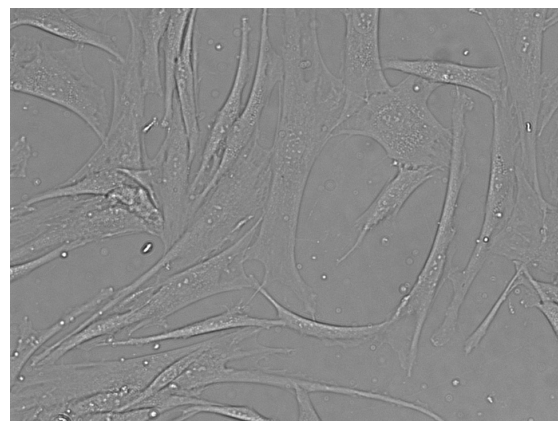
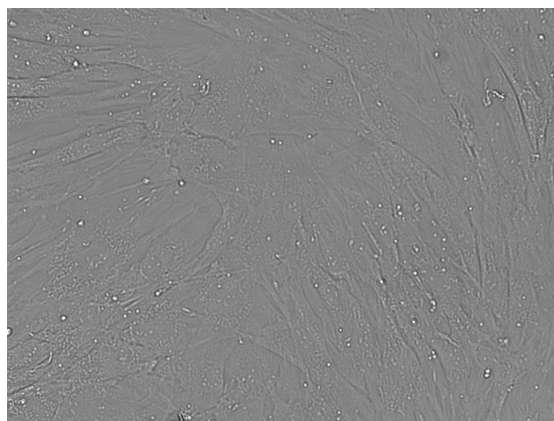
100



50



25

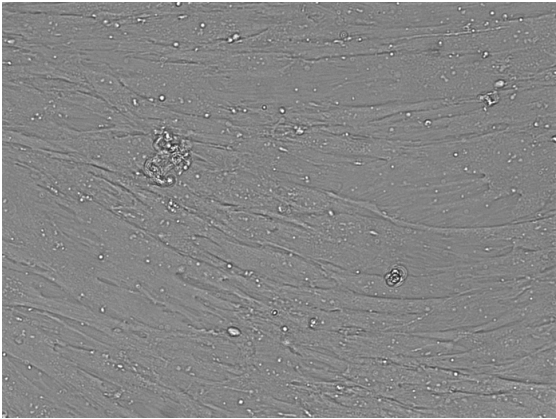
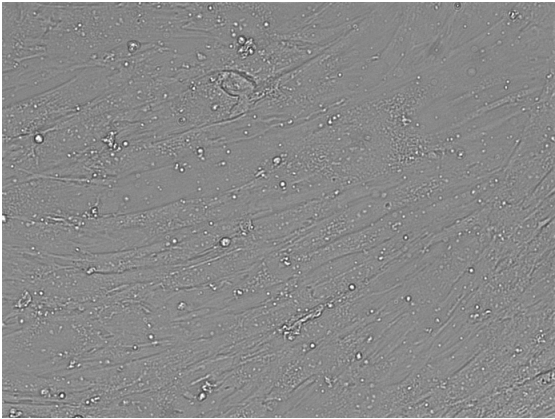


Fibroblast

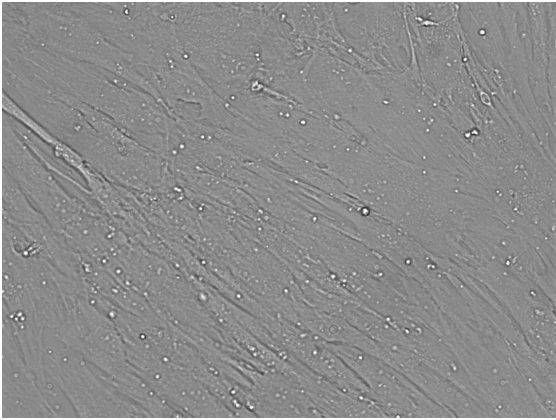
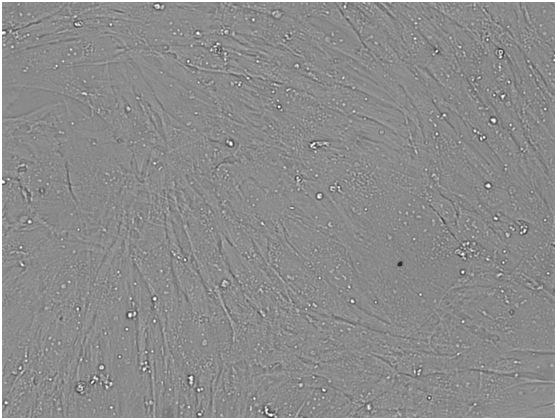
HA-R

Res. with Ethanol

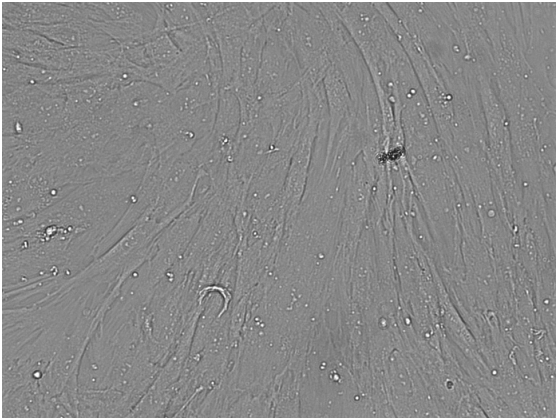
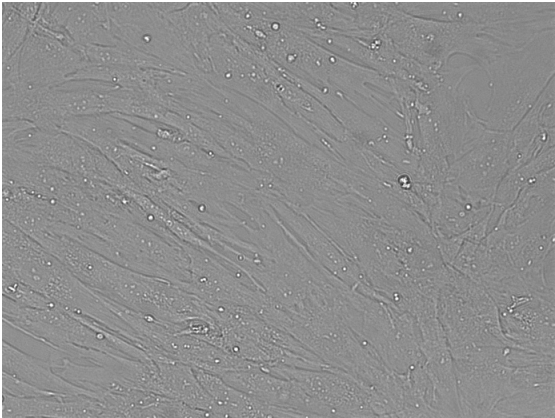
12.5



6.3



3.1

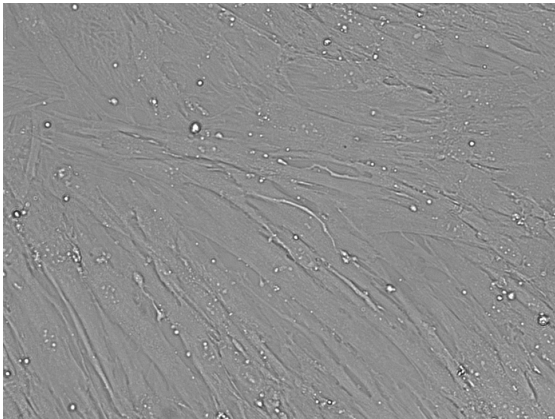
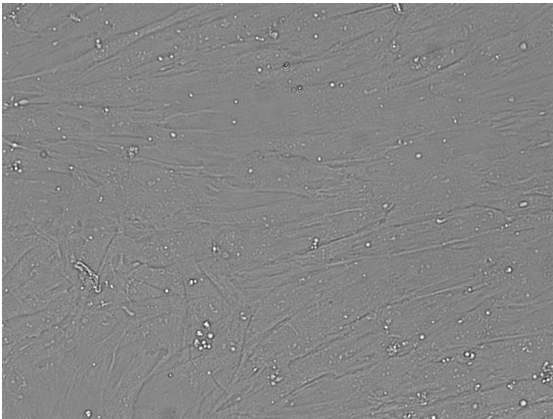


Fibroblast

HA-R

Res. with Ethanol

1.5



0

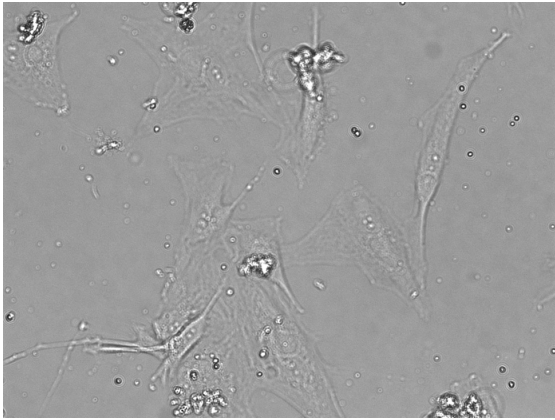
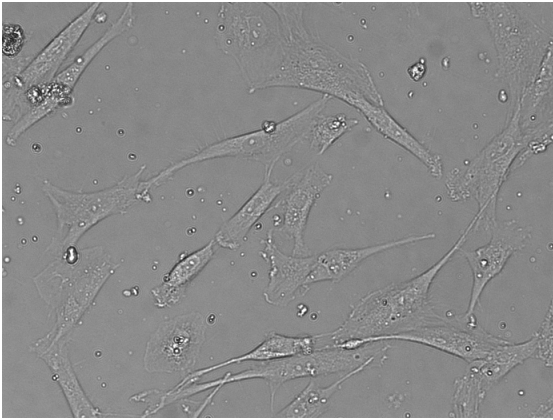


Figure S2 – Tail vein injection of HA-rhodamine after (a) 1, (b) 3, and (c) 6 hours

