

Supplementary Information

Understanding the endocytic pathways of extracellular vesicles produced by the Integra CELLine culture system for intracellular delivery

Tianjiao Geng^{1,2}, Lei Tian¹, Song Yee Paek³, Euphemia Leung⁴, Lawrence W. Chamley³, Zimei Wu^{1*}

¹ School of Pharmacy, Faculty of Medical and Health Sciences, University of Auckland, New Zealand

² Department of Pharmacy, Renji Hospital, School of Medicine, Shanghai Jiaotong University, Shanghai, China

³ Department of Obstetrics and Gynaecology and Hub for Extracellular Vesicles Investigations; Faculty of Medical and Health Sciences, University of Auckland, New Zealand

⁴ Auckland Cancer Society Research Centre; Faculty of Medical and Health Sciences, University of Auckland, New Zealand

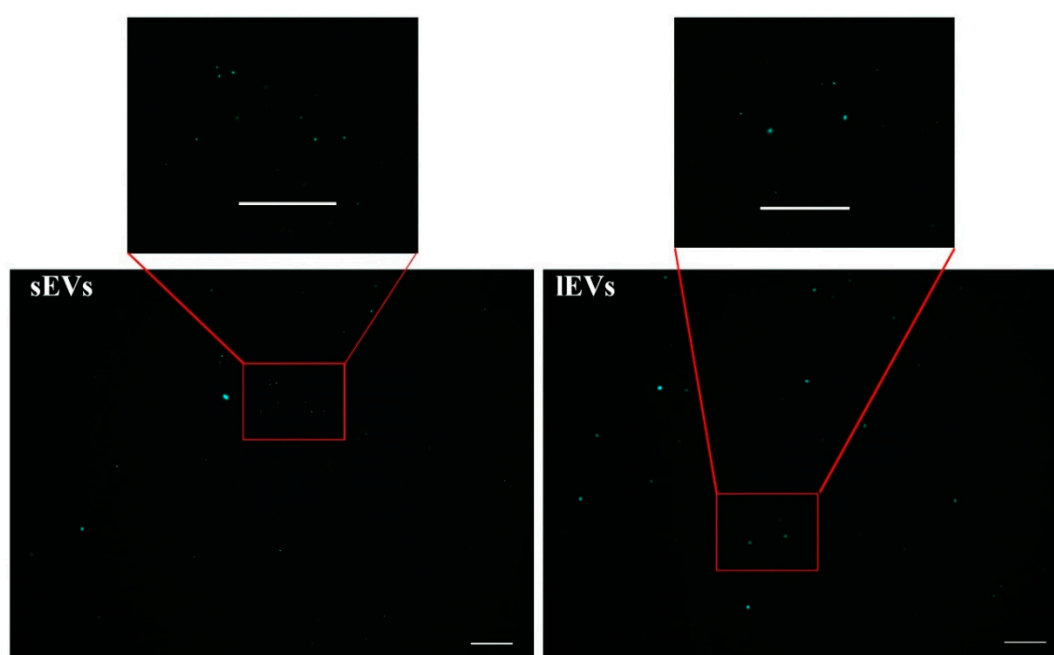


Figure S1. Natural sEVs and lEVs images under a fluorescence microscope, scale bars: 20 μ m. The images showed that natural sEVs and lEVs had no difference in size before adding to cells, indicating lEVs might aggregate during the treatment.