

Evaluating Swellable Cross-Linked Biopolymer Impact on Ink Rheology and Mechanical Properties of Drug-Contained 3D-Printed Thin Film

Farzana Khan Rony ^{1,2}, Jonathan Appiah ², Asmaa Alawbali ², Distinee Clay ², Shamsuddin Ilias ³, and Mohammad A. Azad ^{2,*}

¹ Department of Applied Science and Technology, North Carolina A&T State University, Greensboro, NC 27409, USA; fkrony@aggies.ncat.edu

² Materials Science and Process Engineering (MSPE) Lab, Department of Chemical, Biological, and Bioengineering, North Carolina A&T State University, Greensboro, NC 27409, USA; jappiah@aggies.ncat.edu (J.A.); djclay@aggies.ncat.edu (D.C.)

³ Department of Chemical, Biological, and Bioengineering, North Carolina A&T State University, Greensboro, NC 27409, USA; ilias@ncat.edu

* Correspondence: maazad@ncat.edu; Tel.: +1 -336-285-3701; Fax: +1 -336-334-7904

Table S1. F-5 formulation printed film's drug loading.

Film	Film weight (mg)	Drug loading in a film	
		(mg)	(%)
1	43.70	21.26	48.64
2	46.00	20.53	44.64
3	47.40	19.40	40.94
4	50.30	21.02	41.80
5	37.30	16.71	44.81
6	38.50	17.26	44.84
		Average	44.28
		STDEV	2.49
		RSD	5.62

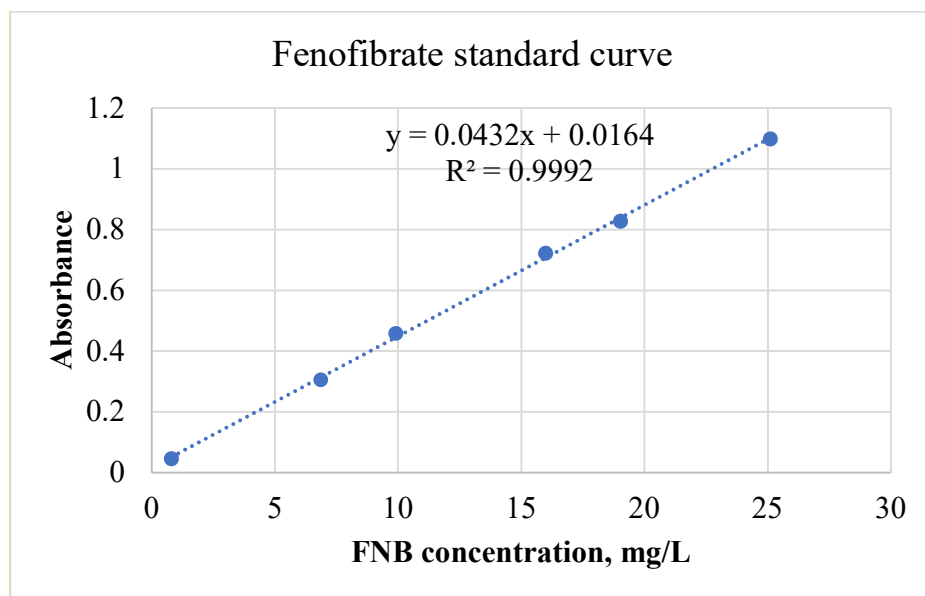


Figure S1: Calibration curve for fenofibrate concentration measured at 286 nm.