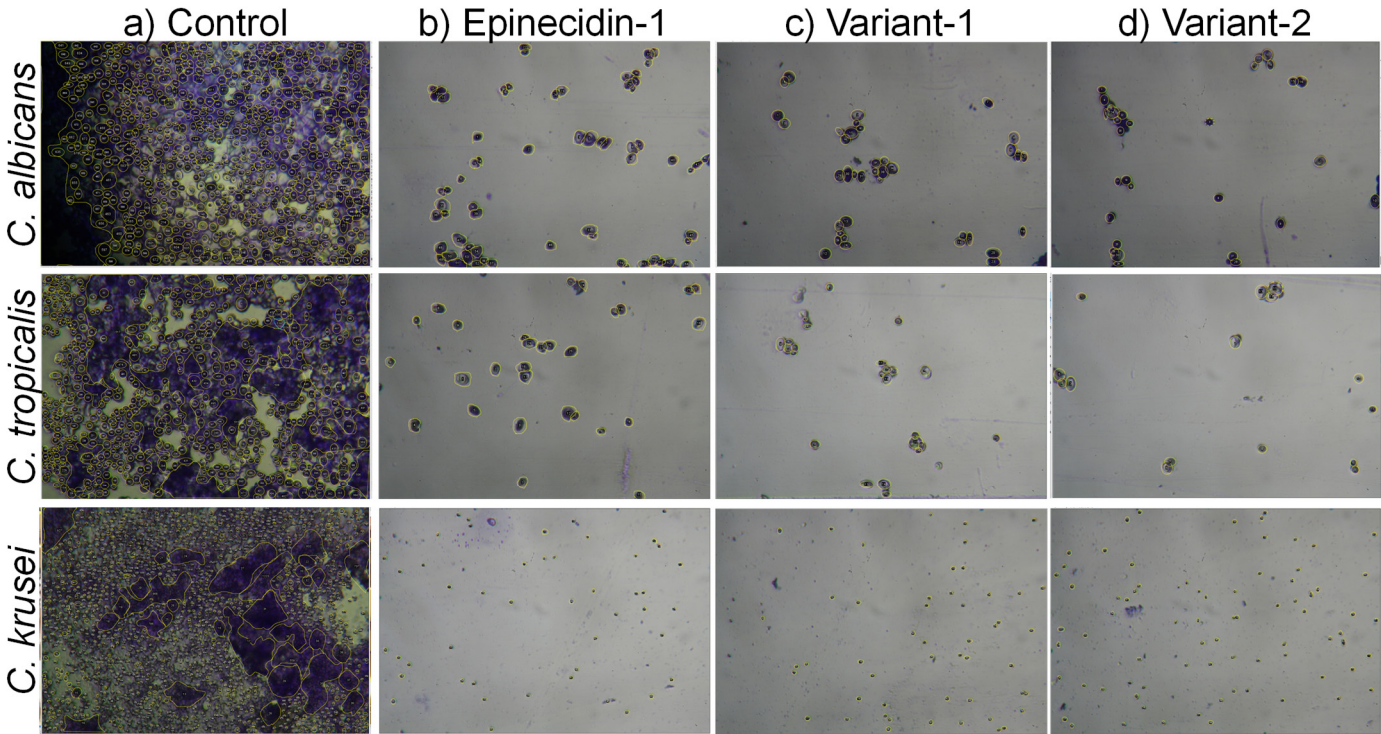


**Supplementary Table 1.** Amino acids of the *Candida* surface proteins that interacts with the peptides. The amino acids of the *Candida* membrane proteins that exhibit shared interactions with the peptides are indicated in bold. As the variants have small MIC values, their interaction with the membrane proteins are stronger.

<i>Candida</i> protein Name	PDB ID	Epi	Var-1	Var-2
a	Exo-B-(1,3)-Glucanase	1CZ1	ASP 151	
			TYR 153	
			VAL 197	PRO 196
			PHE 229	<b>GLN 230</b>
			<b>GLN 230</b>	VAL 231
			<b>PHE 232</b>	<b>PHE 232</b>
			GLU 262	ARG 309
			ASP 280	TYR 317
			ASN 305	ASP 318
			ARG 309	
b	Secreted aspartic proteinase	2QZW		HIS 11
				VAL 12
				<b>THR 221</b>
				<b>TYR 225</b>
			LYS 49	GLY 248
			GLY 85	<b>HIS 249</b>
			ASP 86	GLU 278
			GLY 87	ALA 282
				GLN 295
				LEU 298
c	N-terminal domain of Als 9-2	2Y7L		ARG 312
			TYR 21	
			VAL 22	
			<b>THR 63</b>	<b>THR 63</b>
			<b>THR 65</b>	<b>THR 65</b>
			ASN 82	ASP 80
			PHE 87	SER 92
			PRO 174	<b>SER 175</b>
			<b>SER 175</b>	GLU 265
			ASN 177	<b>ILE 267</b>
			<b>ILE 267</b>	ASP 268
			ASN 299	

Supplementary figure.1. Output of imageJ quantitated for number of cells in the fields.



Supplementary figure.2. Output of imageJ quantitated for number of cells in the fields using binary and threshold settings. The output of results obtained for blue and green channel which were used to calculate the percentage of ROS are shown.

