

Supplementary

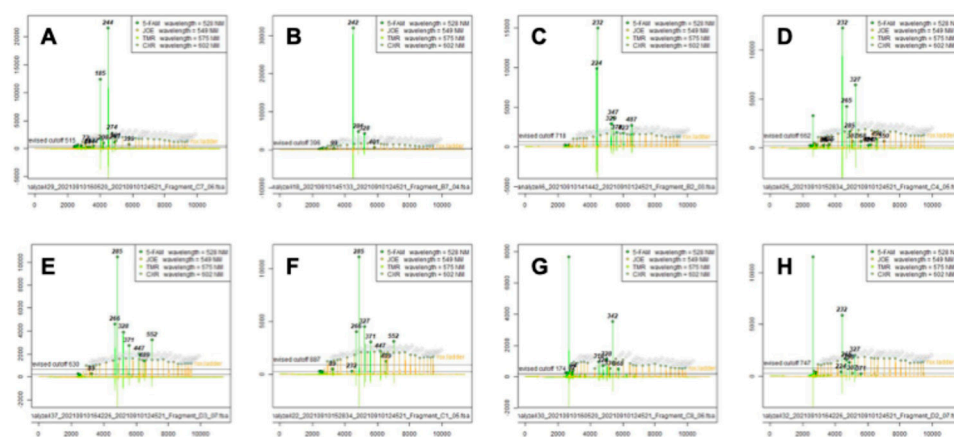


Figure S1. Ribosomal DNA fragment profiles of eight different potential novel ribotypes (From A-H).

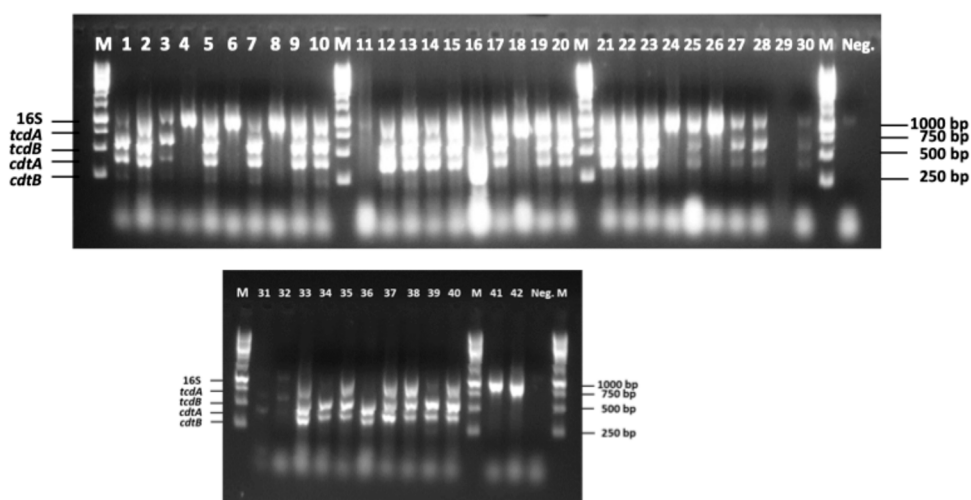


Figure S2. Toxin gene PCR amplification.

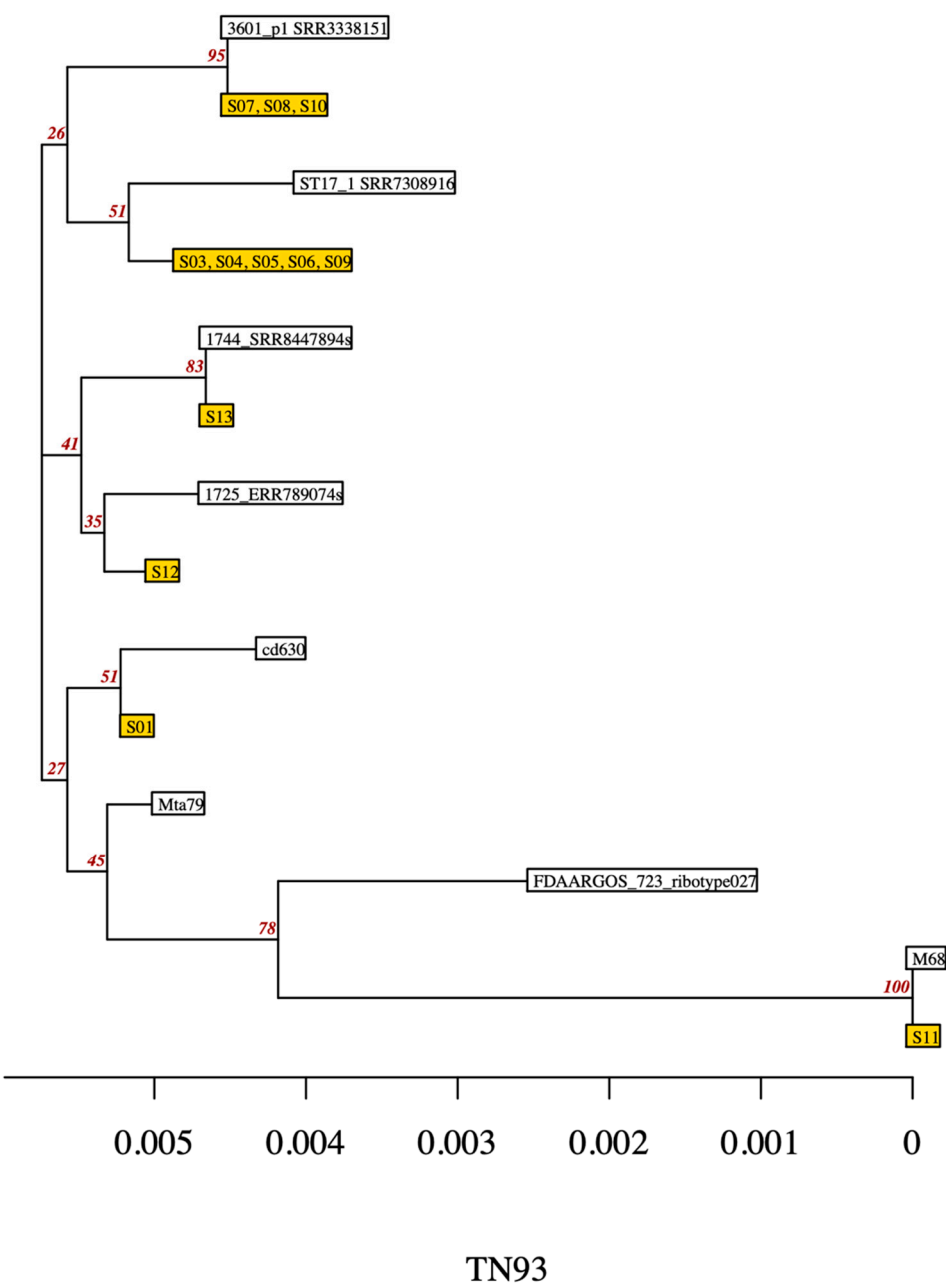


Figure S3. MLST gene phylogeny

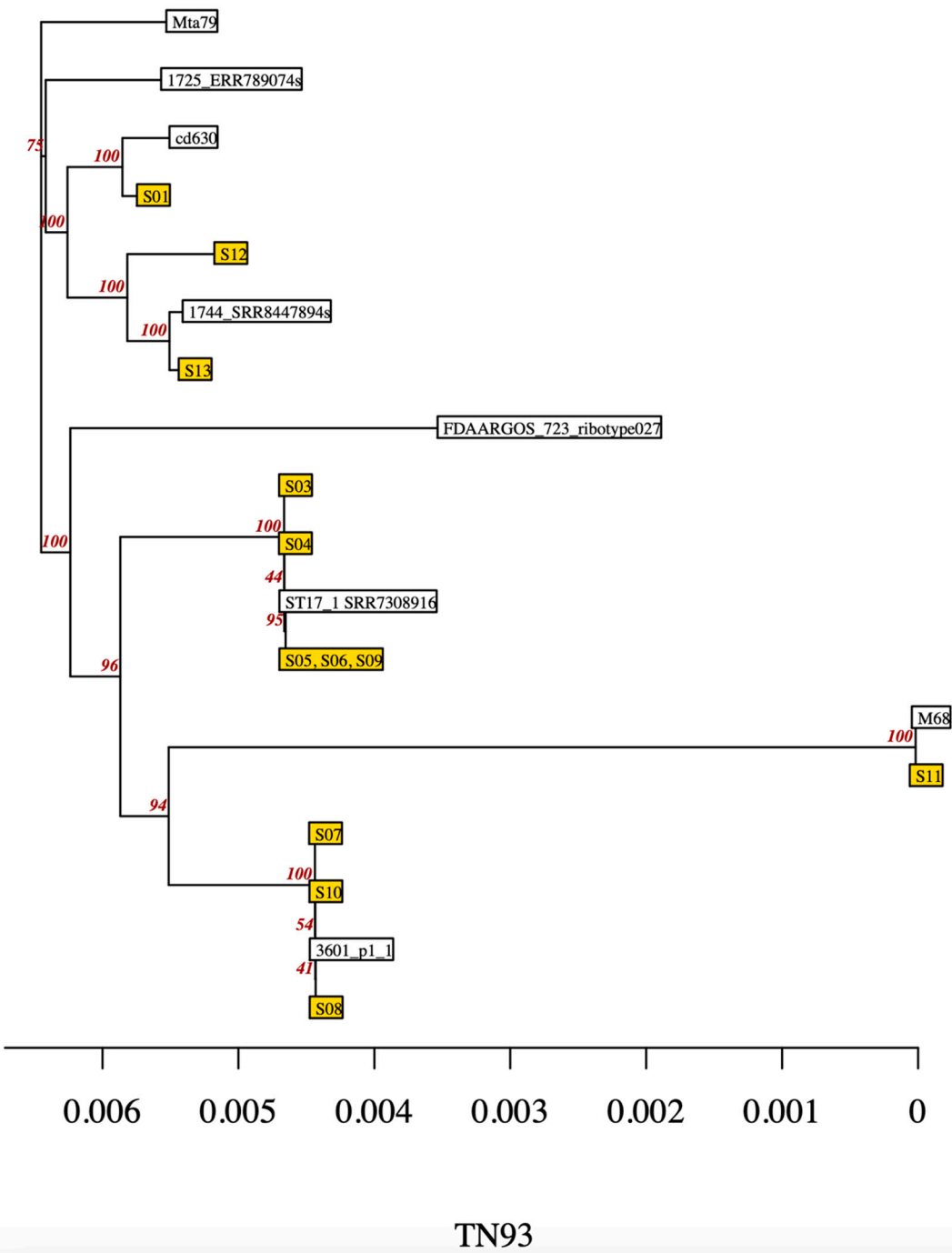


Figure S4. Core genome phylogeny

Table S1. Reference strain metadata

StrainID	GenebankID	BiosampleID	Rationale for inclusion	Database used	Database citation
CD105KSE6	GCA_900073115.1	SAMEA3294010	best match to S12 in MLST tree	PubMLST	PubMLST
V1982	NA	SAMN10755821	best match to S13 in MLST tree	PubMLST	PMID: 30345391
3601	NA	SAMN04460158	best match of a ST242 genome to S07, S08, and S10 which were also ST242	MMC1	PMID: 31130255
ST17	NA	SAMN09406876	best match of a ST17 genome to S03, S04, S05, S06, and S09 which were also ST17	MMC1	PMID: 31130255
Cd630	GCA_000009205.2	SAMEA1705932	reference strain	NCBI	
Mta-79	GCA_008245165.1	SAMN12388106	reference strain	NCBI	
M68	GCA_000210395.1	SAMEA3138366	Best BLASTn hit to S11	NCBI	
FDAARGOS_723	GCF_009730495.1	SAMN11056438	reference strain	NCBI	