

Online Supplementary Materials

Values Influence Public Acceptability of Geoengineering Technologies Via Self-Identities

Figure S1: *Conceptual Representation of the Mediation Model (Geothermal Energy)*

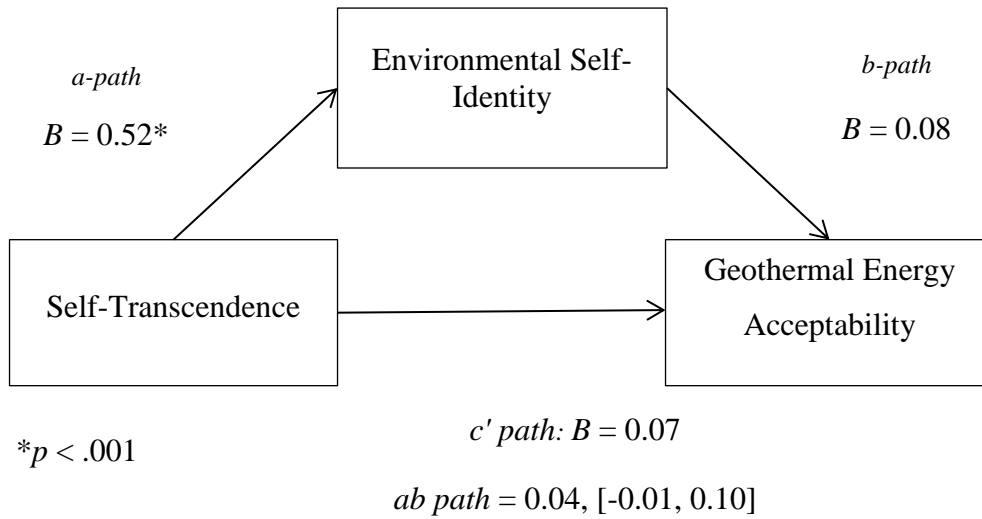


Figure S1: An outline of the relationship between self-transcendence values and geothermal energy acceptability mediated by an environmental self-identity with marginal significance.

Figure S2: *Conceptual Representation of the Mediation Model (Geothermal Energy)*

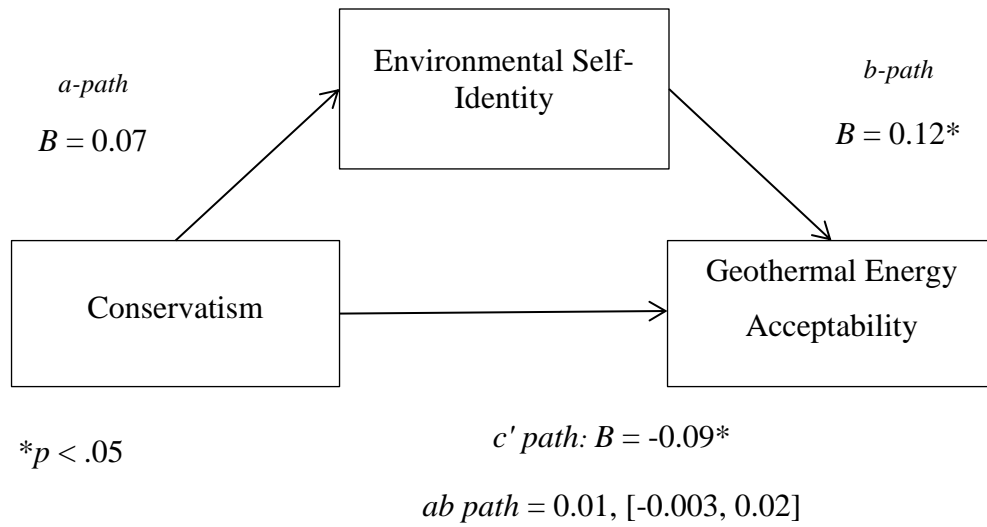


Figure S2: An outline of the relationship between conservatism and geothermal energy acceptability mediated by an environmental self-identity.

Figure S3: *Conceptual Representation of the Mediation Model (Geothermal Energy)*

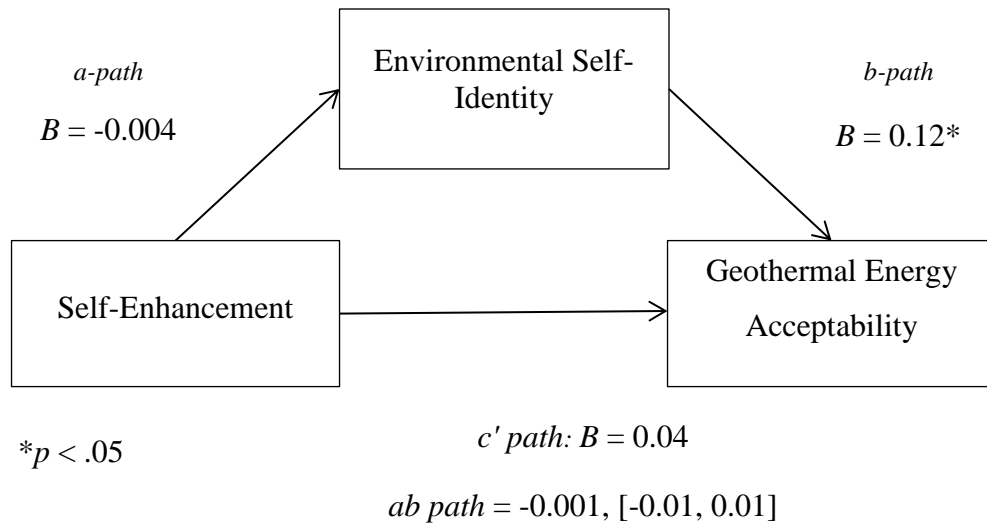


Figure S3: An outline of the relationship between self-enhancement values and geothermal energy acceptability mediated by an environmental self-identity.

Figure S4: *Conceptual Representation of the Mediation Model (Geothermal Energy)*

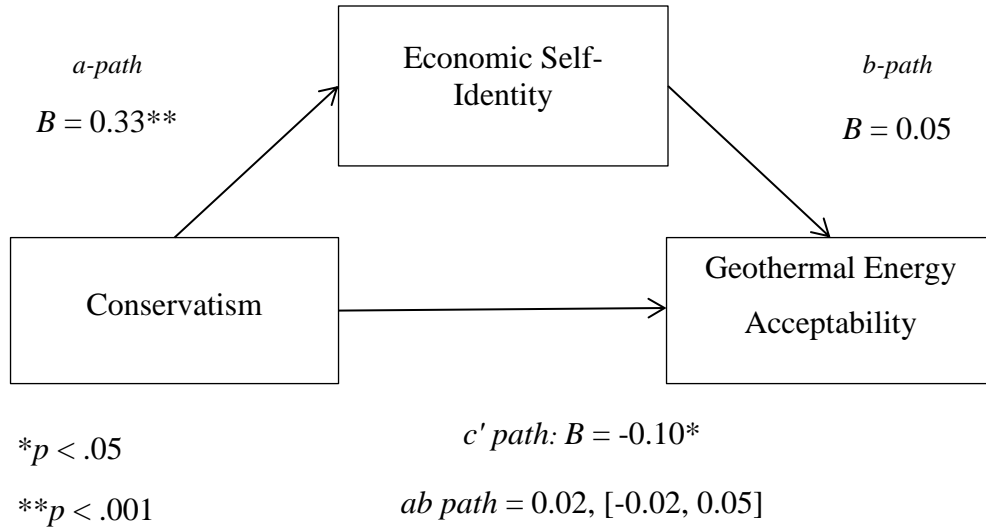


Figure S4: An outline of the relationship between conservatism and geothermal energy acceptability mediated by an economic self-identity.

Figure S5: *Conceptual Representation of the Mediation Model (Geothermal Energy)*

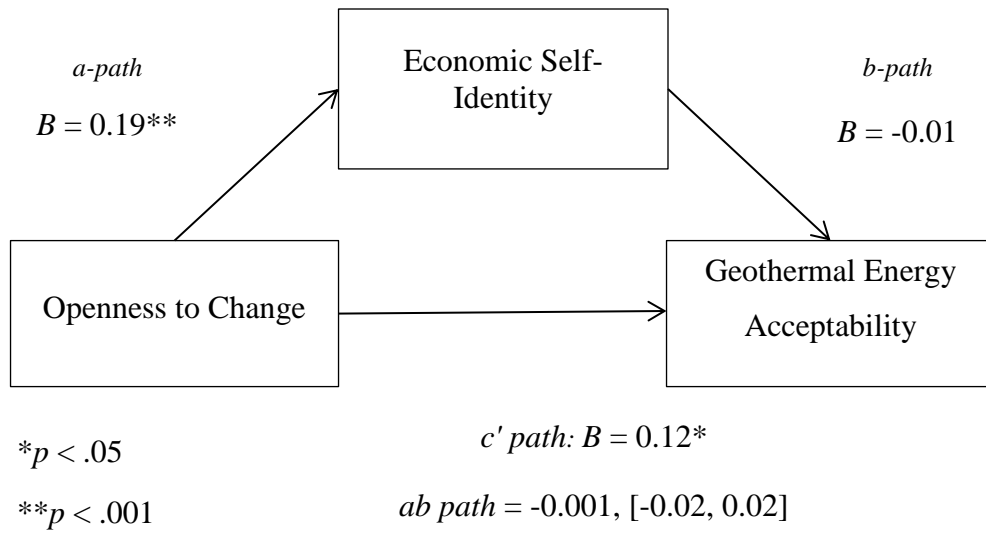


Figure S5: An outline of the relationship between openness to change and geothermal energy acceptability mediated by an economic self-identity.

Figure S6: *Conceptual Representation of the Mediation Model (Geothermal Energy)*

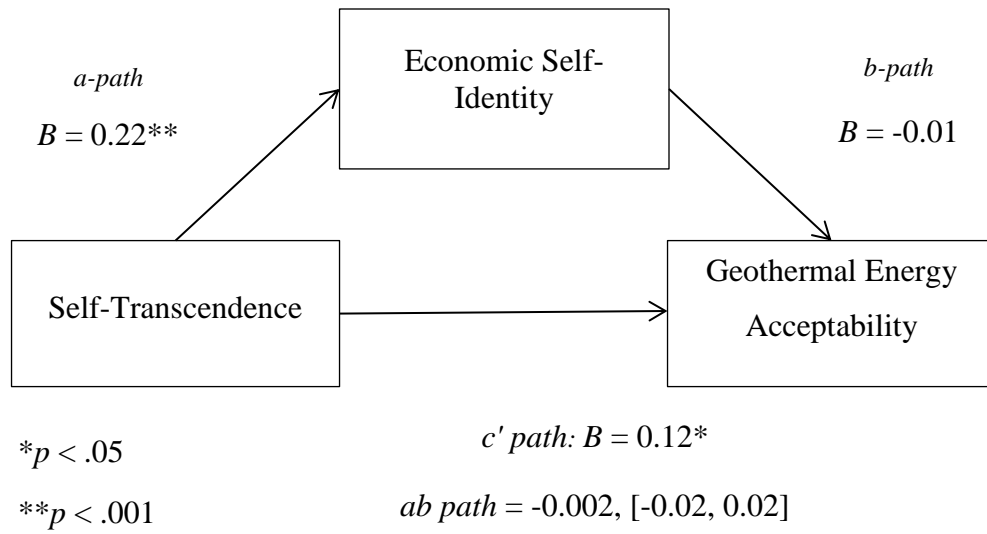


Figure S6: An outline of the relationship between self-transcendence values and geothermal energy acceptability mediated by an economic self-identity.

Figure S7: *Conceptual Representation of the Mediation Model (Geothermal Energy)*

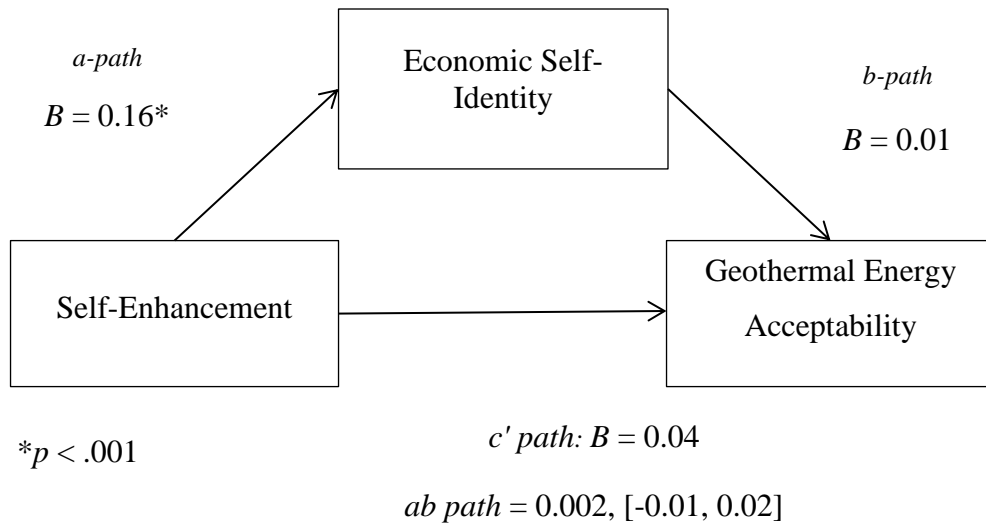


Figure S7: An outline of the relationship between self-enhancement values and geothermal energy acceptability mediated by an economic self-identity.

Figure S8: Conceptual Representation of the Mediation Model (Geothermal Energy)

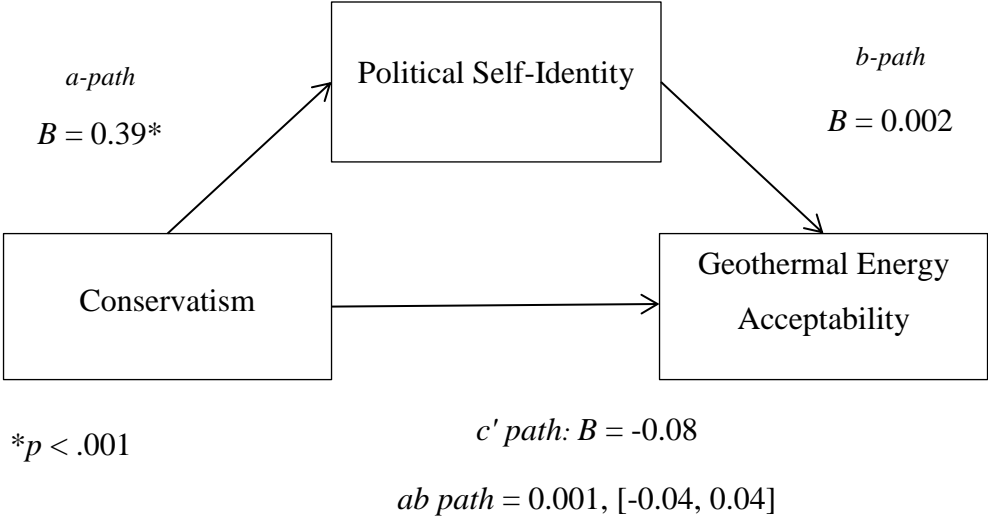


Figure S8: An outline of the relationship between conservatism and geothermal energy acceptability mediated by political self-identity.

Figure S9: *Conceptual Representation of the Mediation Model (Geothermal Energy)*

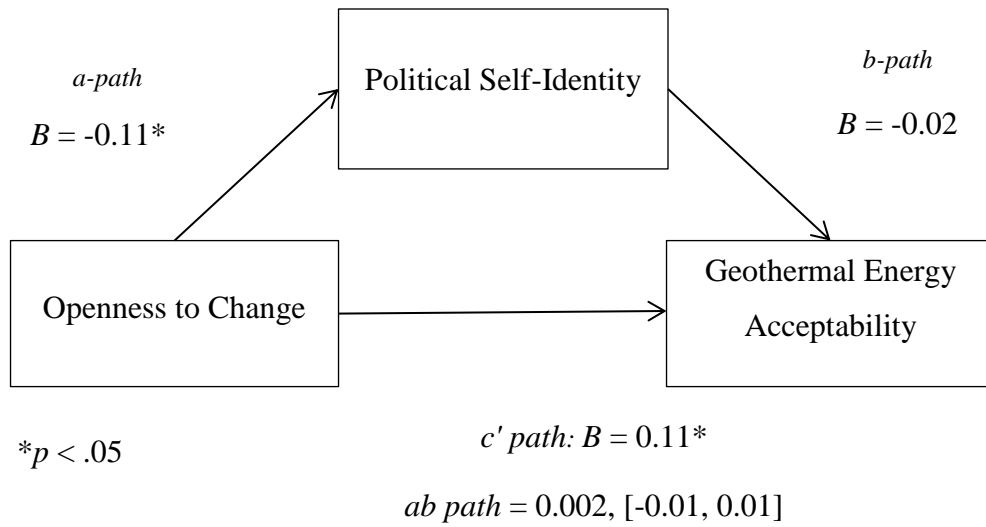


Figure S9: An outline of the relationship between openness to change and geothermal energy acceptability mediated by political self-identity.

Figure S10: *Conceptual Representation of the Mediation Model (Geothermal Energy)*

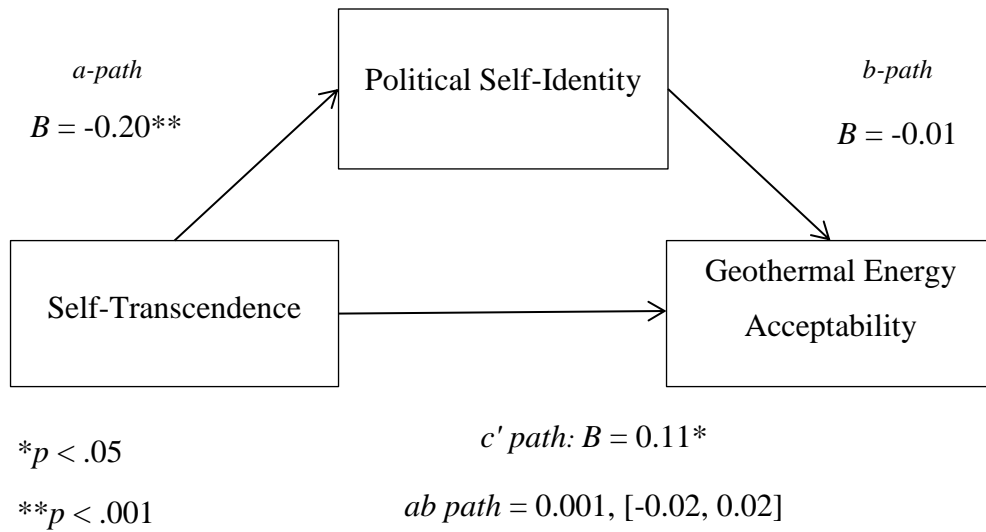


Figure S10: An outline of the relationship between self-transcendence values and geothermal energy acceptability mediated by political self-identity.

Figure S11: *Conceptual Representation of the Mediation Model (Geothermal Energy)*

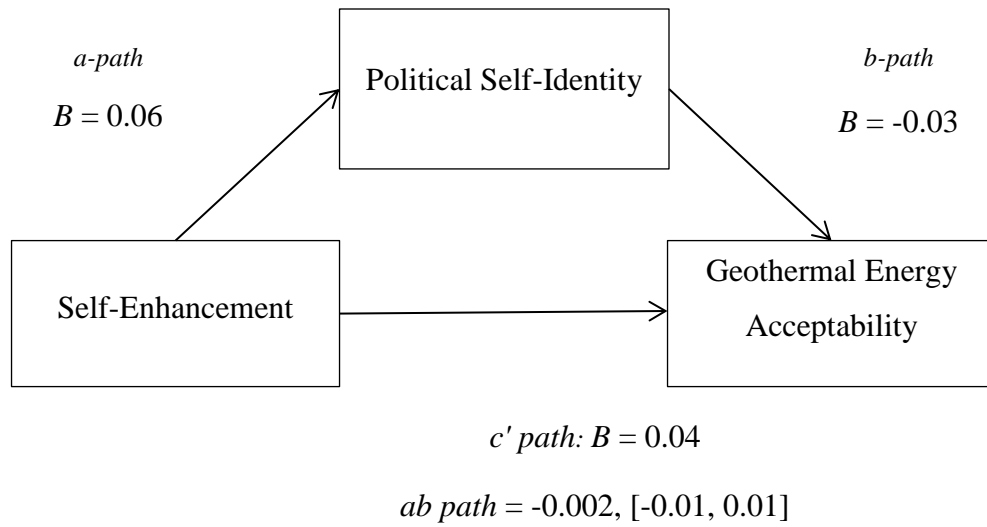


Figure S11: An outline of the relationship between self-enhancement and geothermal energy acceptability mediated by political self-identity.

Figure S12: *Conceptual Representation of the Mediation Model (Nuclear Power)*

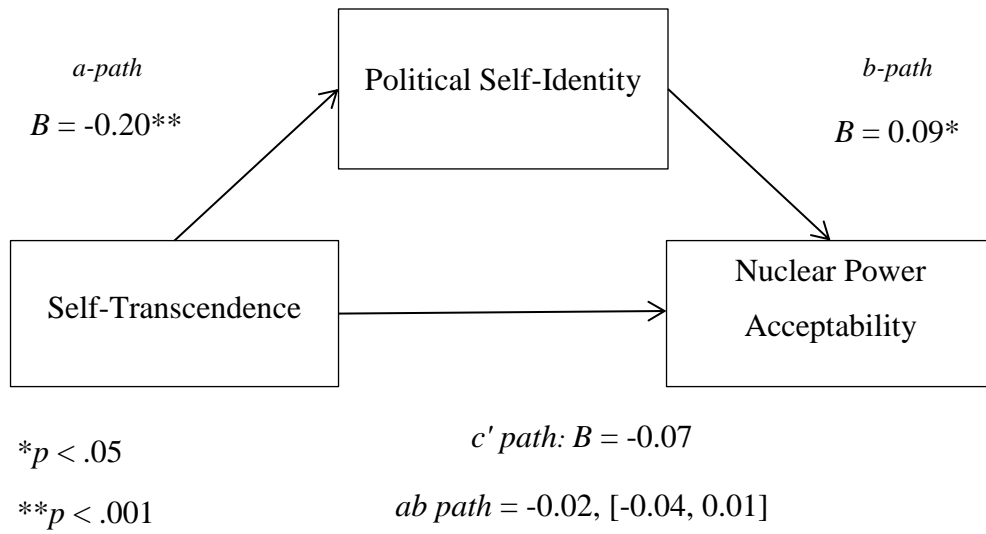


Figure S12: An outline of the relationship between self-transcendence and nuclear power acceptability mediated by a political self-identity.

Figure S13: *Conceptual Representation of the Mediation Model (Nuclear Power)*

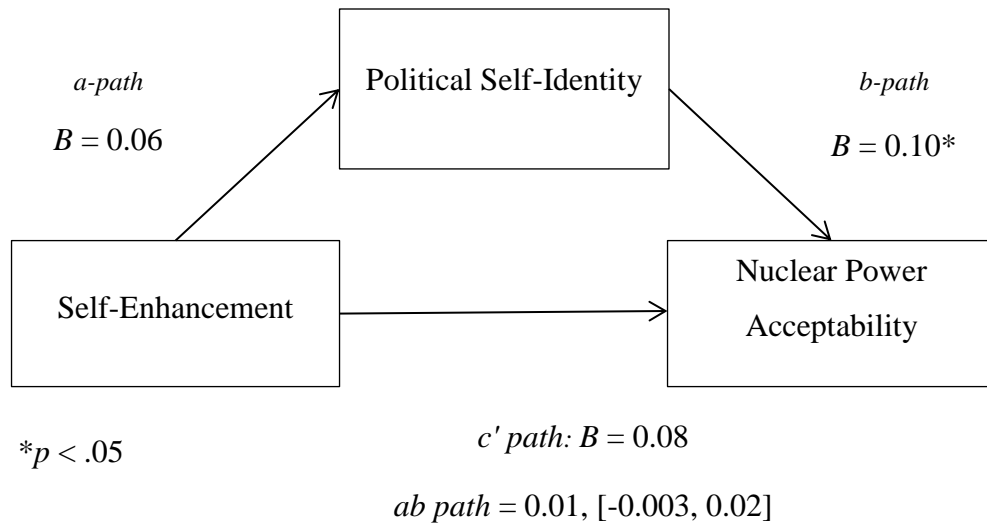


Figure S13: An outline of the relationship between self-enhancement and nuclear power acceptability mediated by a political self-identity.

Figure S14: *Conceptual Representation of the Mediation Model (Nuclear Power)*

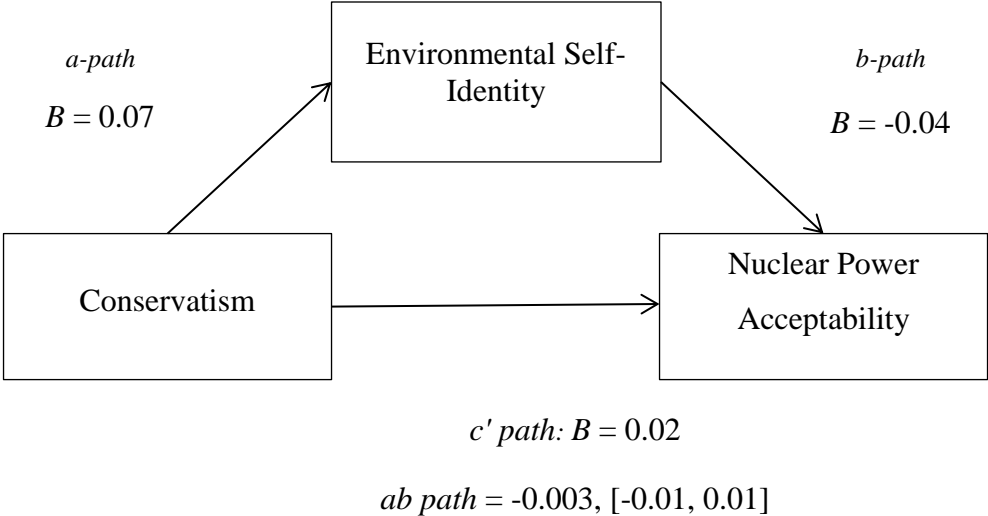


Figure S14: An outline of the relationship between conservatism and nuclear power acceptability mediated by an environmental self-identity.

Figure S15: *Conceptual Representation of the Mediation Model (Nuclear Power)*

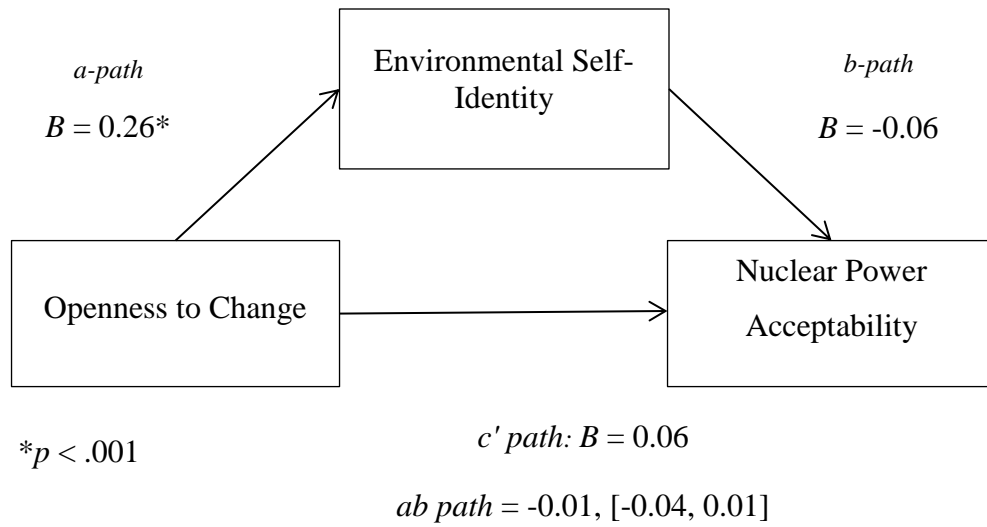


Figure S15: An outline of the relationship between openness to change and nuclear power acceptability mediated by an environmental self-identity.

Figure S16: *Conceptual Representation of the Mediation Model (Nuclear Power)*

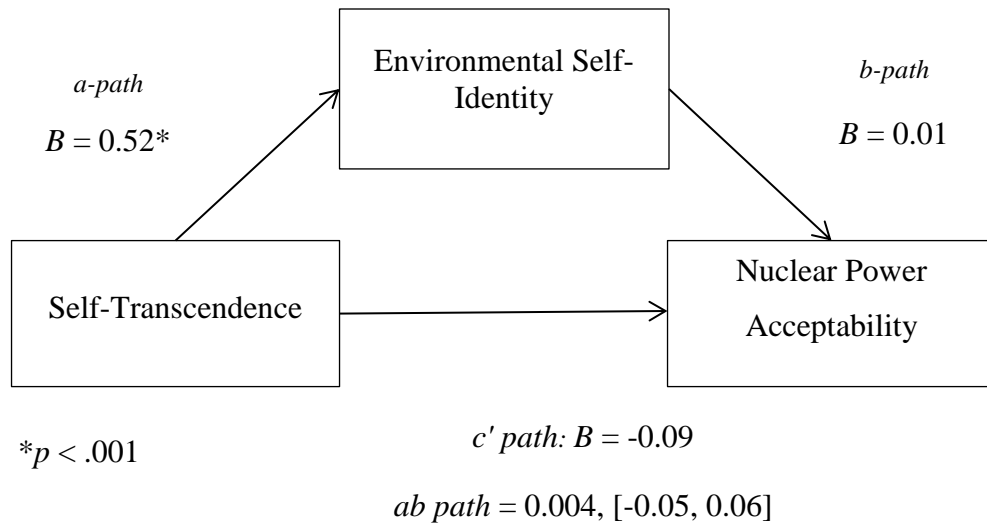


Figure S16: An outline of the relationship between self-transcendence values and nuclear power acceptability mediated by an environmental self-identity.

Figure S17: *Conceptual Representation of the Mediation Model (Nuclear Power)*

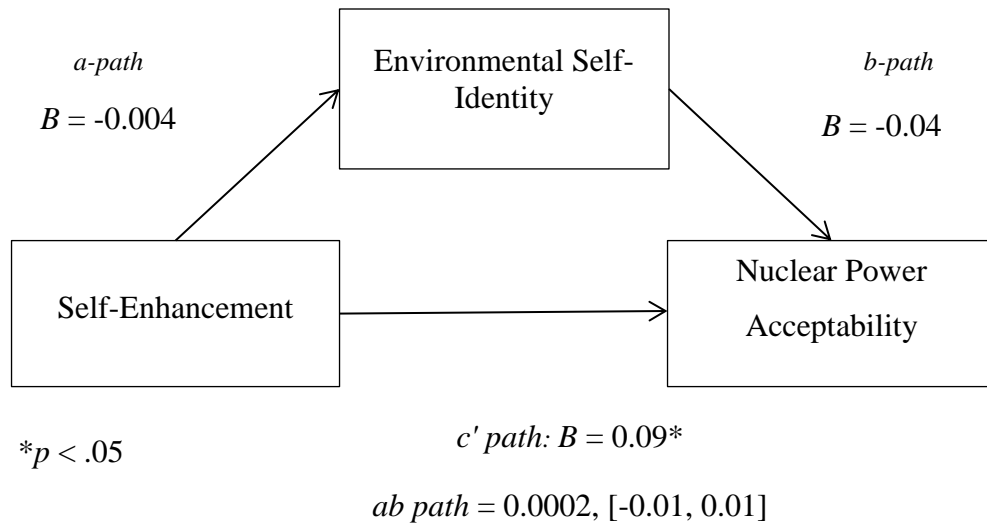


Figure S17: An outline of the relationship between self-enhancement values and nuclear power acceptability mediated by an environmental self-identity.

Figure S18: *Conceptual Representation of the Mediation Model (Nuclear Power)*

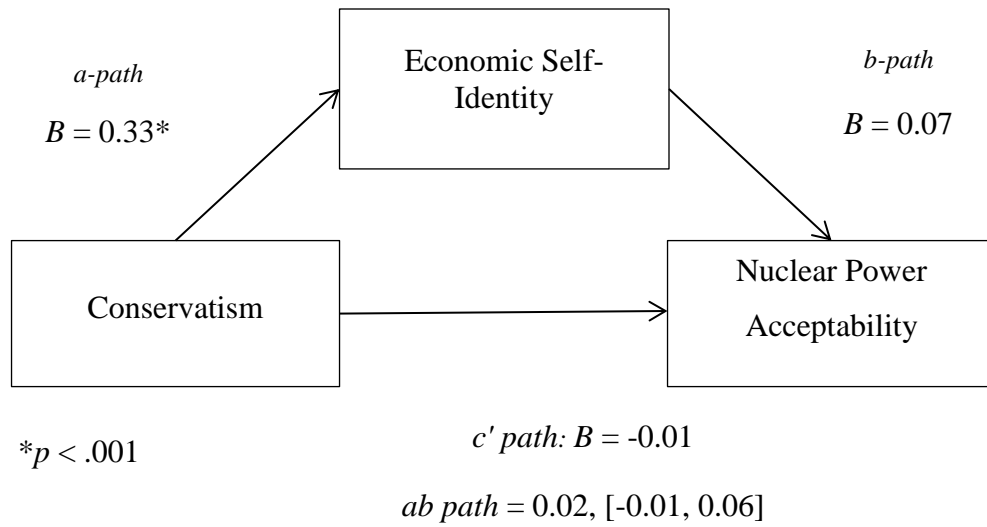


Figure S18: An outline of the relationship between conservatism and nuclear power acceptability significantly mediated by an economic self-identity.

Figure S19: *Conceptual Representation of the Mediation Model (Nuclear Power)*

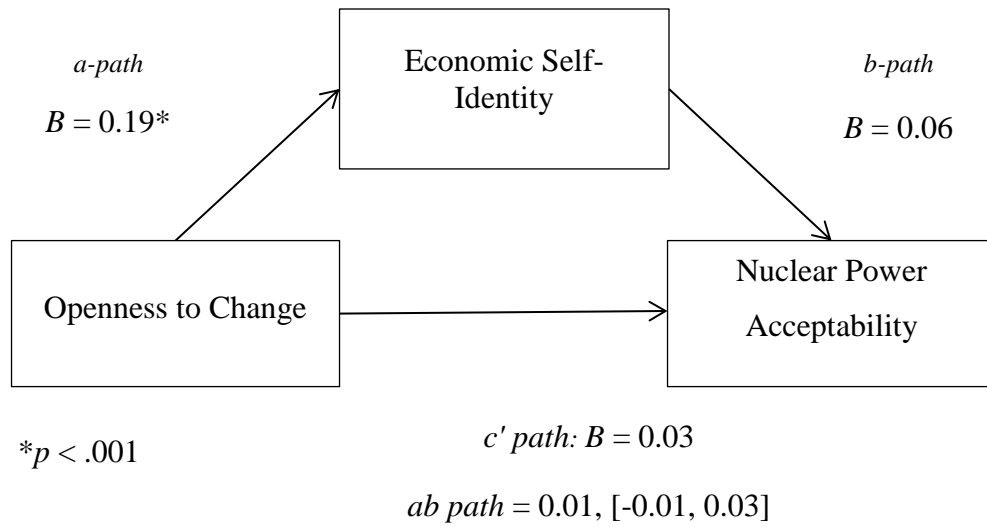


Figure S19: An outline of the relationship between openness to change and nuclear power acceptability mediated by an economic self-identity.

Figure S20: *Conceptual Representation of the Mediation Model (Nuclear Power)*

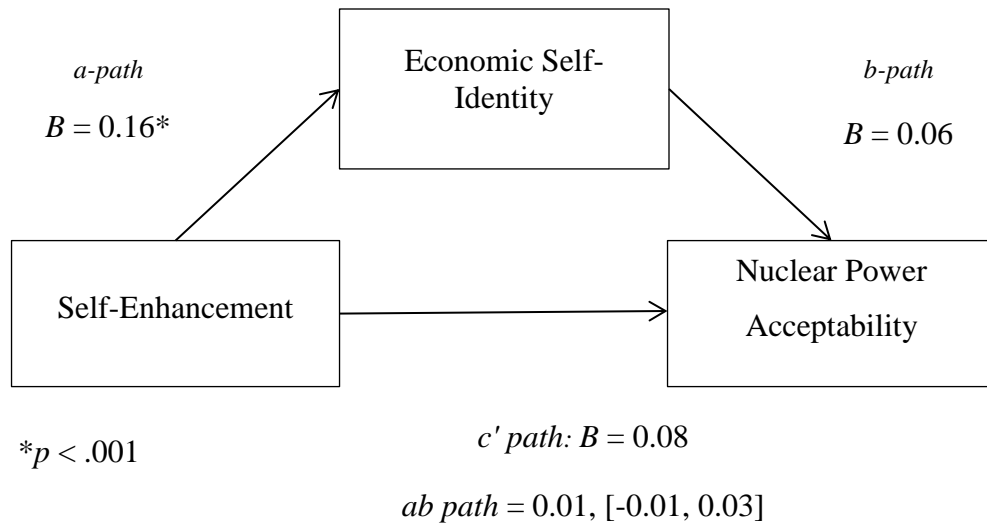


Figure S20: An outline of the relationship between self-enhancement values and nuclear power acceptability mediated by an economic self-identity with marginal significance.

Figure S21: *Conceptual Representation of the Mediation Model (Mining)*

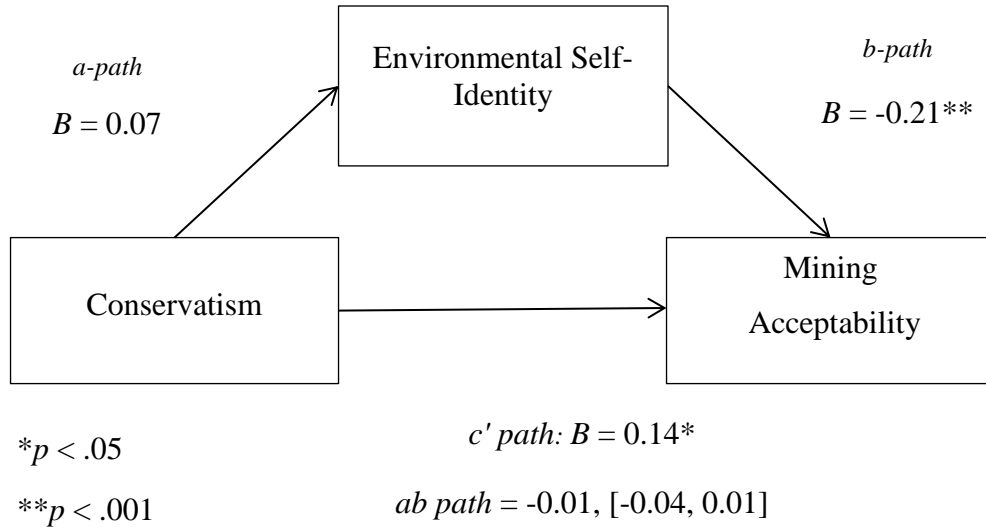


Figure S21: An outline of the relationship between conservatism and less mining acceptability mediated by an environmental self-identity with marginal significance.

Figure S22: *Conceptual Representation of the Mediation Model (Mining)*

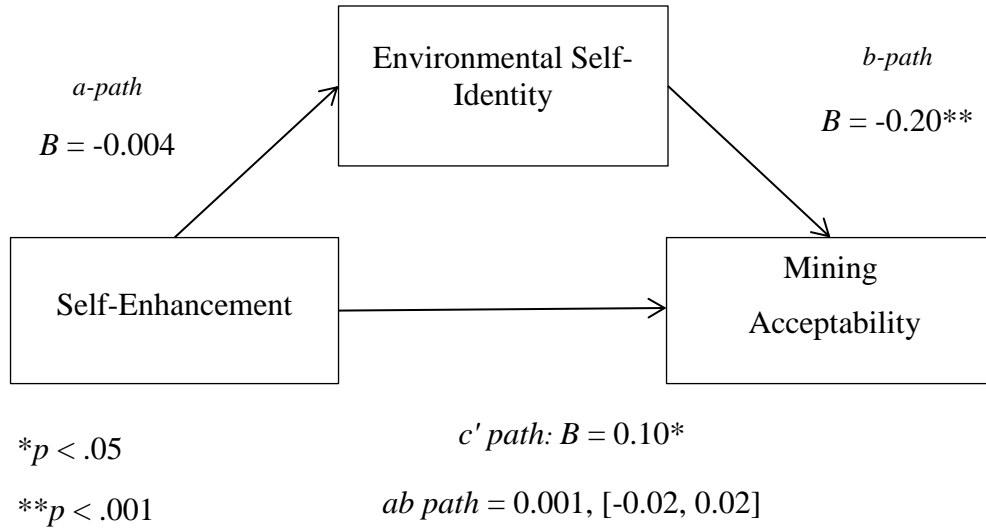


Figure S22: An outline of the relationship between self-enhancement and mining acceptability mediated by an environmental self-identity.

Figure S23: *Conceptual Representation of the Mediation Model (Mining)*

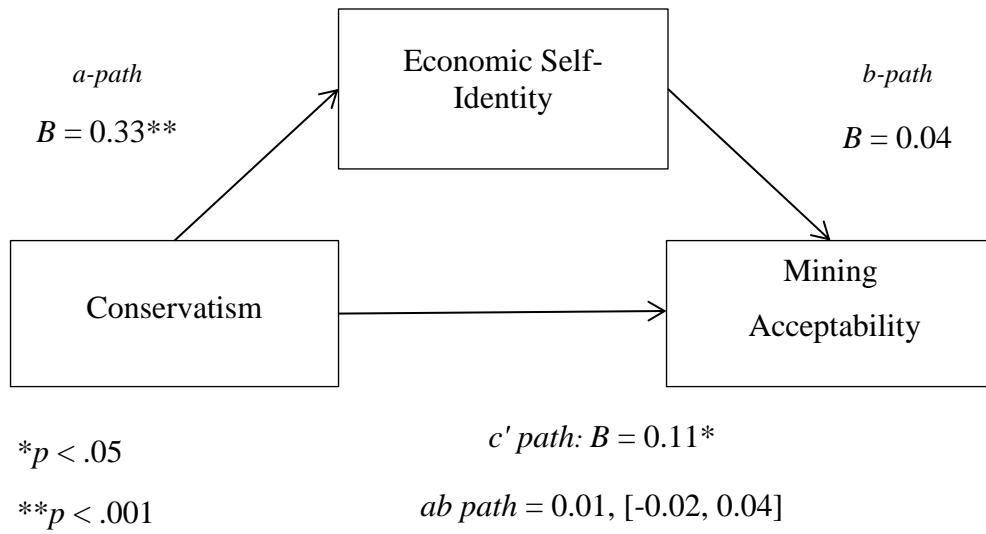


Figure S23: An outline of the relationship between conservatism and mining acceptability mediated by an economic self-identity.

Figure S24: *Conceptual Representation of the Mediation Model (Mining)*

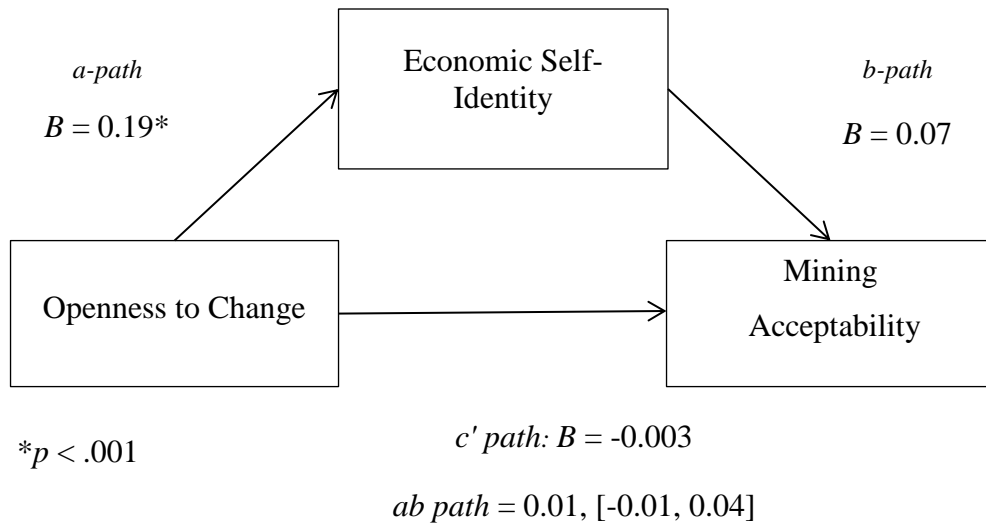


Figure S24: An outline of the relationship between openness to change and mining acceptability mediated by an economic self-identity with marginal significance.

Figure S25: *Conceptual Representation of the Mediation Model (Mining)*

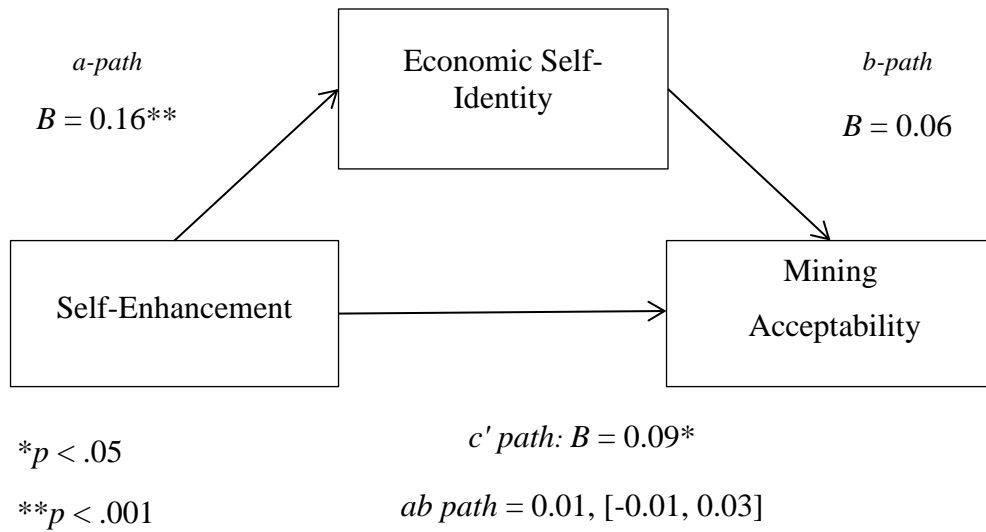


Figure S25: An outline of the relationship between self-enhancement values and mining acceptability mediated by an economic self-identity with marginal significance.

Figure S26: *Conceptual Representation of the Mediation Model (Mining)*



Figure S26: An outline of the relationship between self-enhancement values and mining acceptability mediated by a right-leaning political self-identity with marginal significance.

Figure S27: *Conceptual Representation of the Mediation Model (Geotechnical Engineering)*

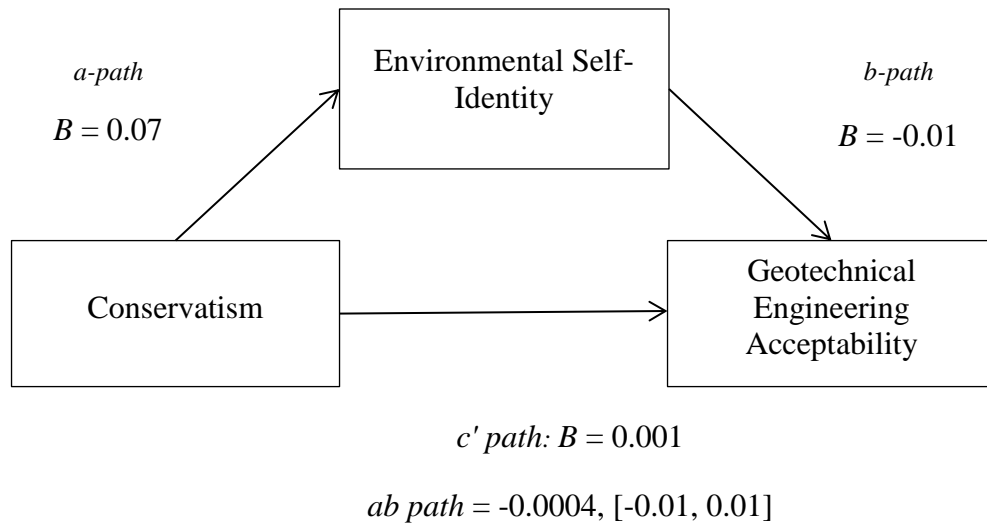


Figure S27: An outline of the relationship between conservatism and geotechnical engineering mediated by an environmental self-identity.

Figure S28: *Conceptual Representation of the Mediation Model (Geotechnical Engineering)*

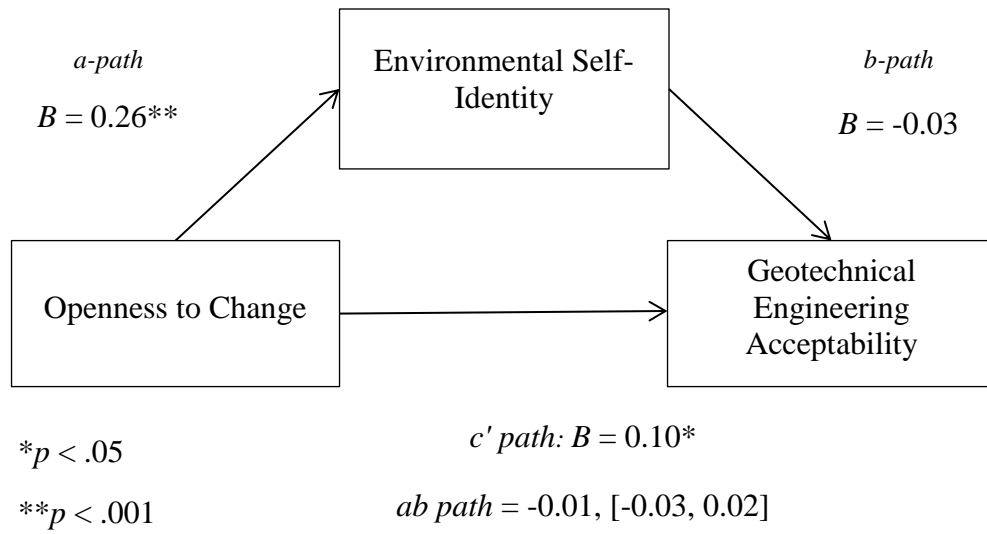


Figure S28: An outline of the relationship between openness to change and geotechnical engineering acceptability mediated by an environmental self-identity.

Figure S29: *Conceptual Representation of the Mediation Model (Geotechnical Engineering)*

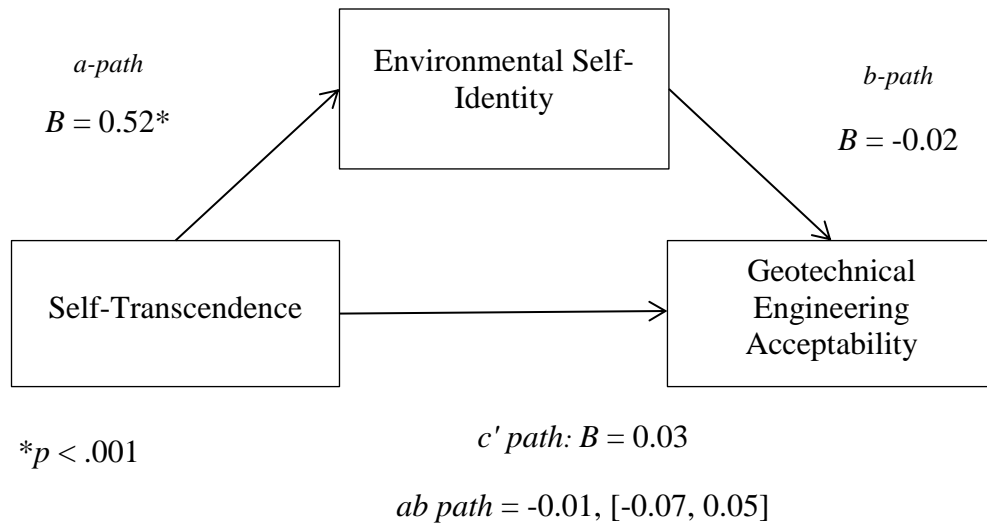


Figure S29: An outline of the relationship between self-transcendence values and geotechnical engineering acceptability mediated by an environmental self-identity.

Figure S30: *Conceptual Representation of the Mediation Model (Geotechnical Engineering)*

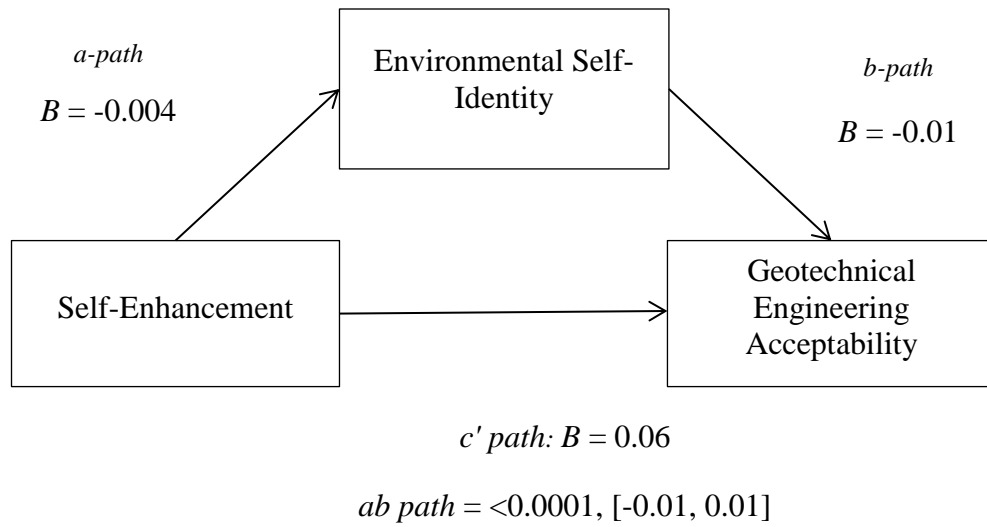


Figure S30: An outline of the relationship between self-enhancement values and geotechnical engineering acceptability mediated by an environmental self-identity.

Figure S31: *Conceptual Representation of the Mediation Model (Geotechnical Engineering)*

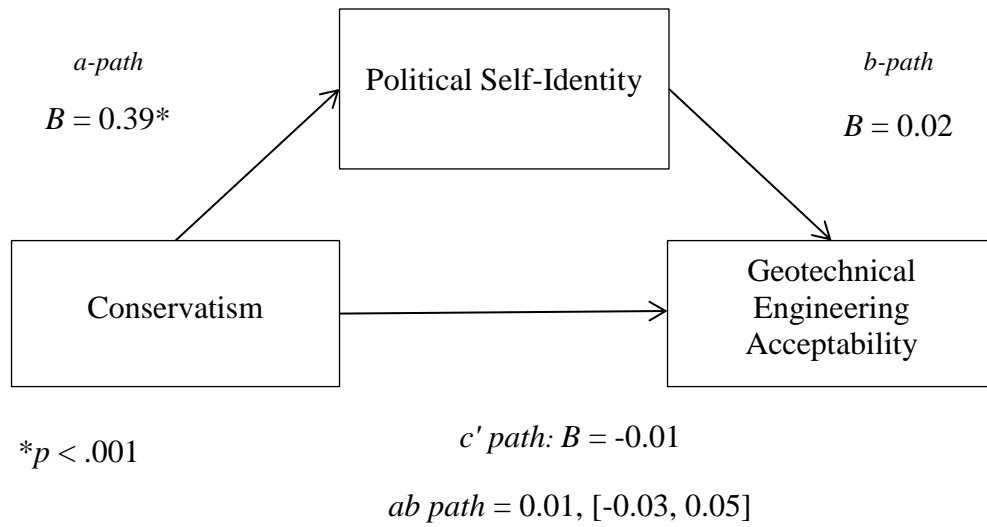


Figure S31: An outline of the relationship between conservatism and geotechnical engineering mediated by a political self-identity.

Figure S32: *Conceptual Representation of the Mediation Model (Geotechnical Engineering)*

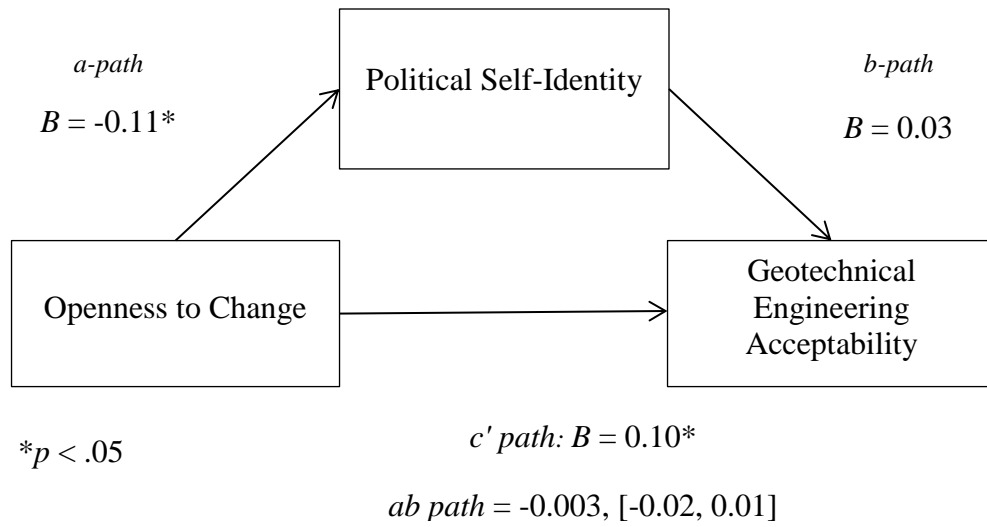


Figure S32: An outline of the relationship between openness to change and geotechnical engineering acceptability mediated by a political self-identity.

Figure S33: *Conceptual Representation of the Mediation Model (Geotechnical Engineering)*

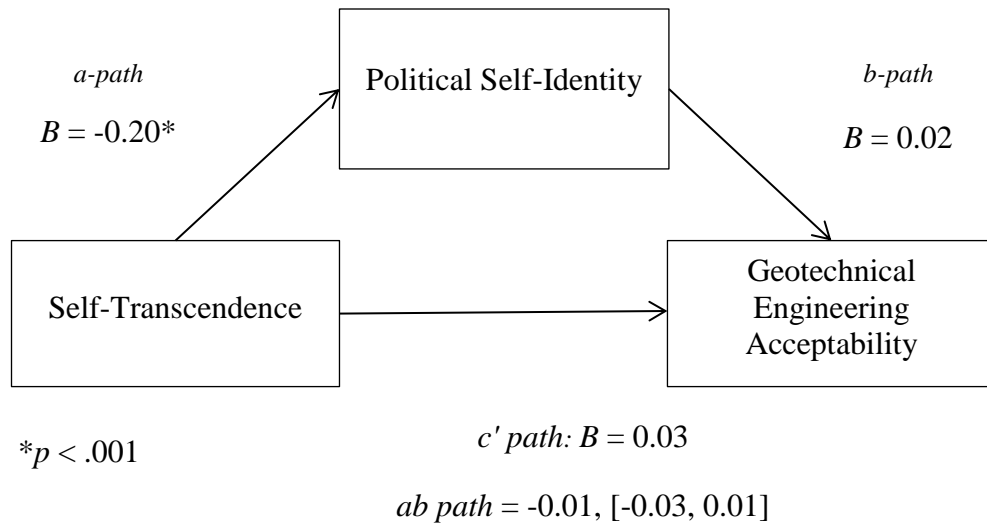


Figure S33: An outline of the relationship between self-transcendence values and geotechnical engineering acceptability mediated by a political self-identity.

Figure S34: *Conceptual Representation of the Mediation Model (Geotechnical Engineering)*

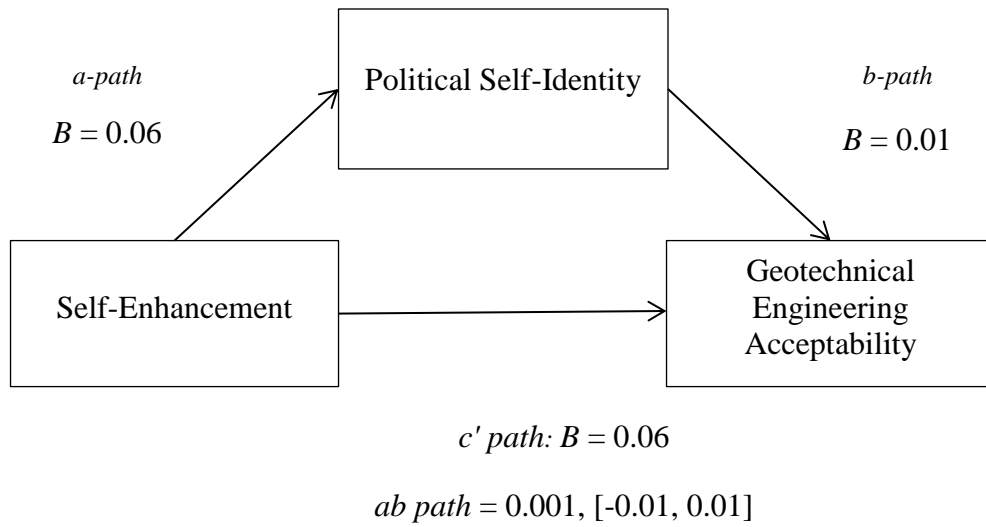


Figure S34: An outline of the relationship between self-enhancement values and geotechnical engineering acceptability mediated by a political self-identity.