

Figure S1. Scanning electron microscopy (SEM) of Sawdust before impregnation with KOH (A), and after impregnation with KOH (B).

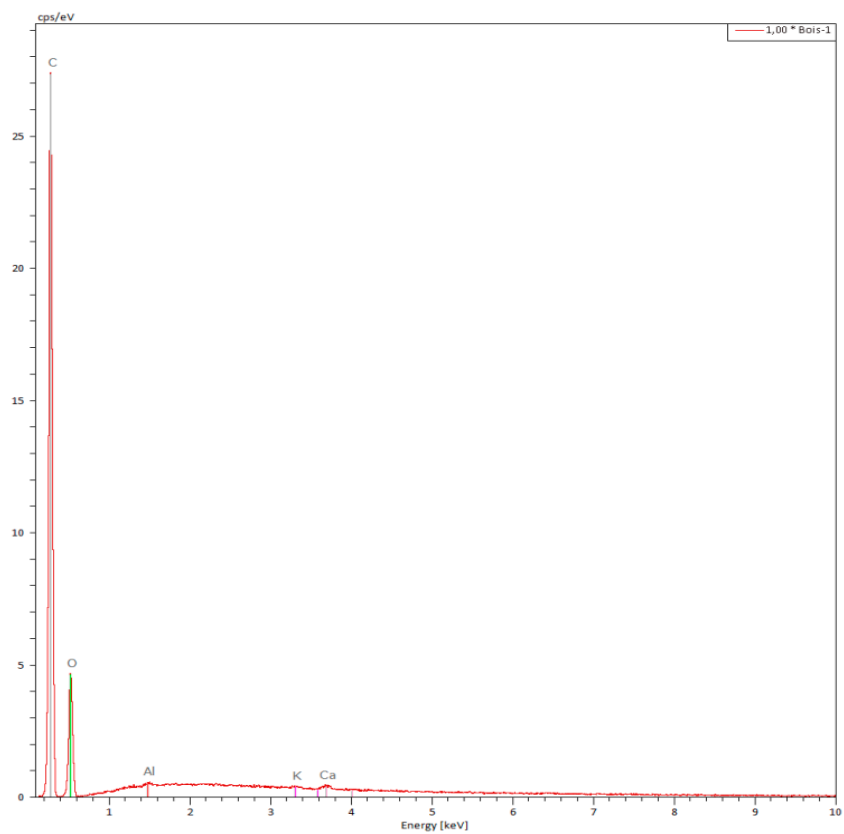


Figure S2. EDX spectrum of biomass (sawdust).

Table S1. XPS spectrum of sawdust.

O 1s (at%)	N 1s (at%)	C 1s (at%)	Si 2s (at%)	B 1s (at%)	Cl 2p (at%)	Ca 2p (at%)	Na 1s (at%)	F 1s (at%)	K 2p (at%)
12.6	5.1	74.1	0.2	0.7	0.1	0.0	0.0	0.5	6.7

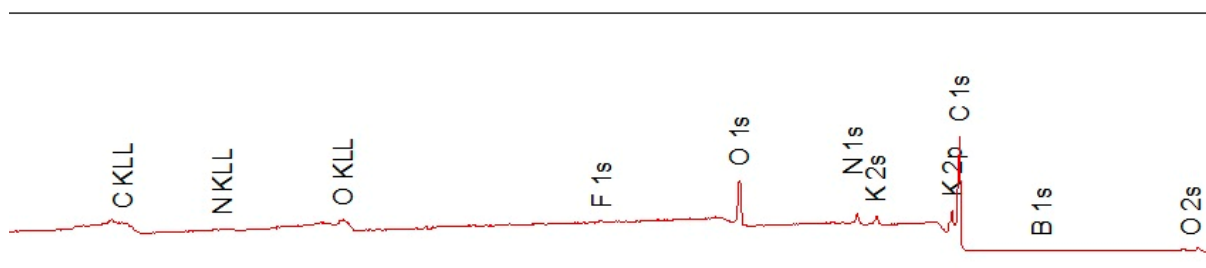


Figure S3. XPS analysis and complete survey of sawdust.

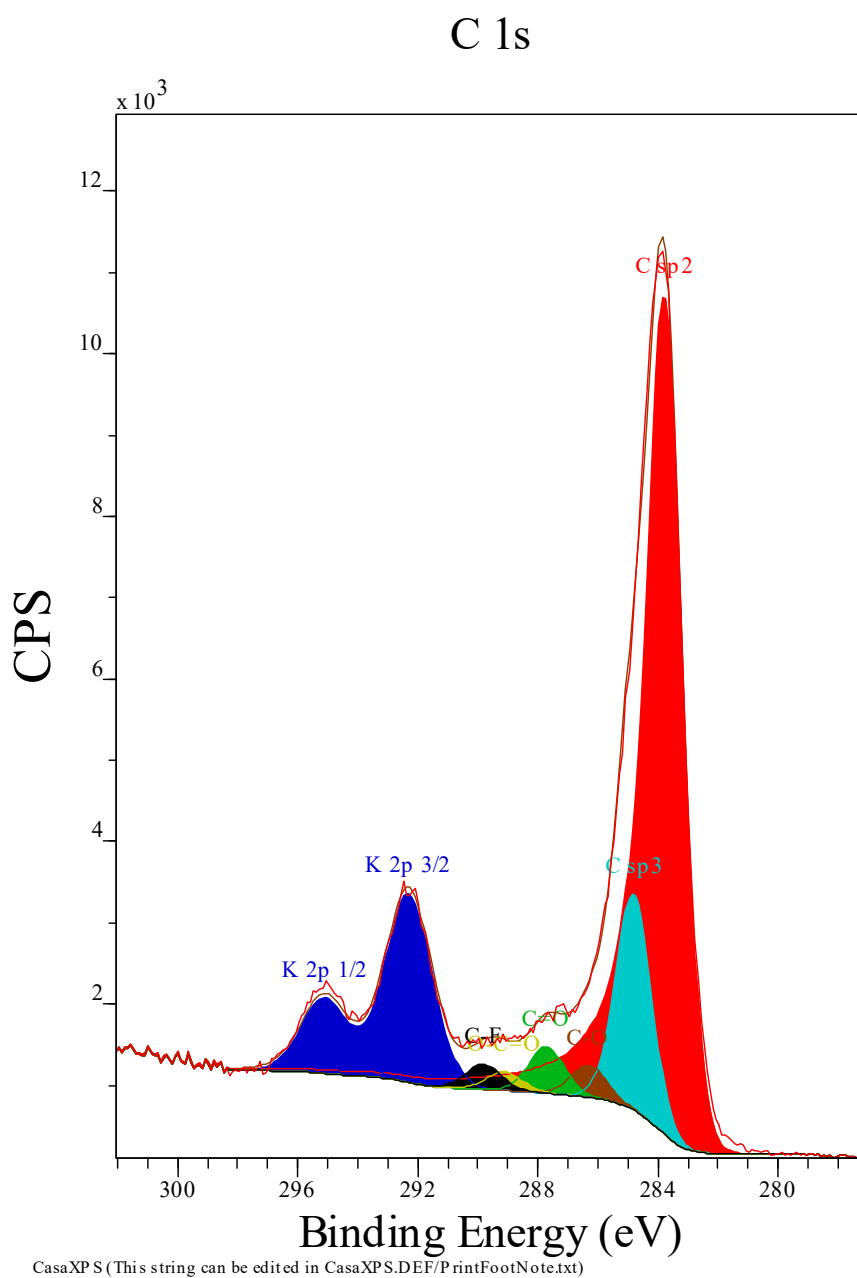
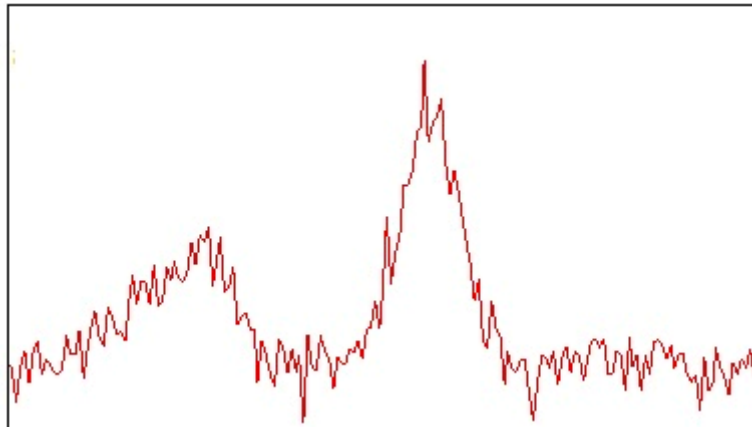
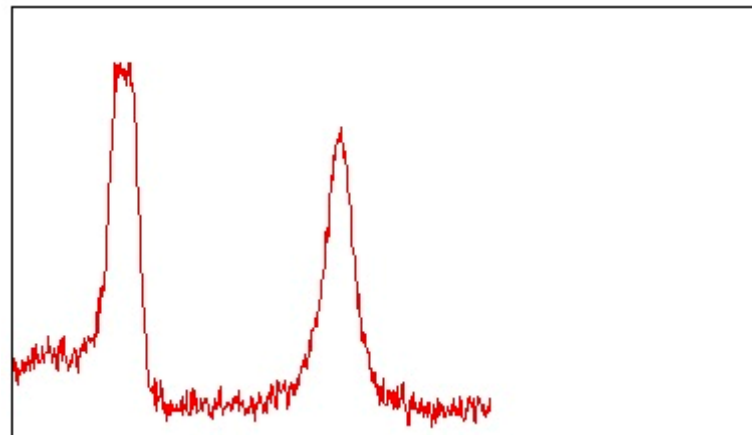


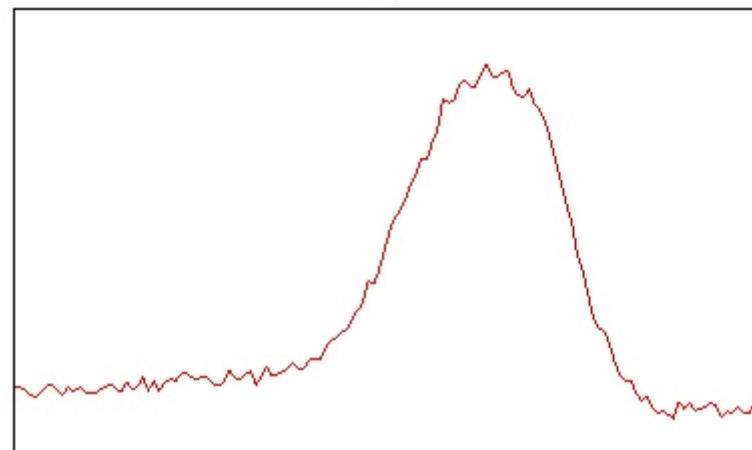
Figure S4. C 1s XPS spectrum of sawdust.



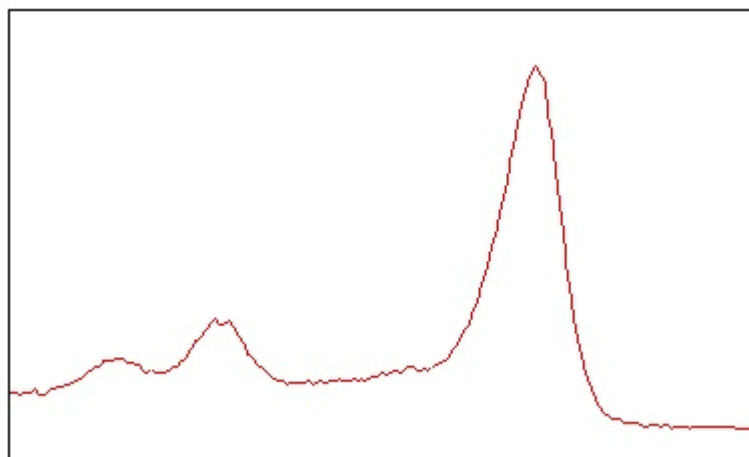
(a)



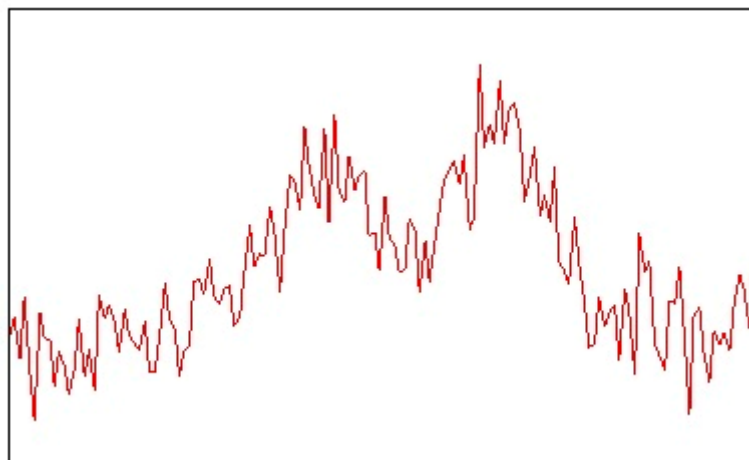
(b)



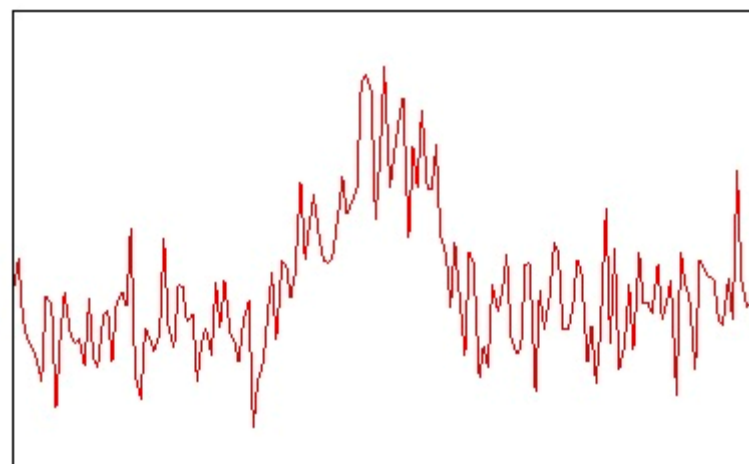
(c)



(d)



(e)



(f)

Figure S5. XPS spectrum of sawdust (a) Cl, (b) N 1s and K 2s, (c) O 1s, (d) C 1s, (e) F 1s and (f) Si 2p.

Table S2. Physico-chemical characteristics of sawdust.

Biomass Characterization	Softwood
Humidity level	10%
Granulometry	0.9–1.18 mm
ASH content	0.5 %