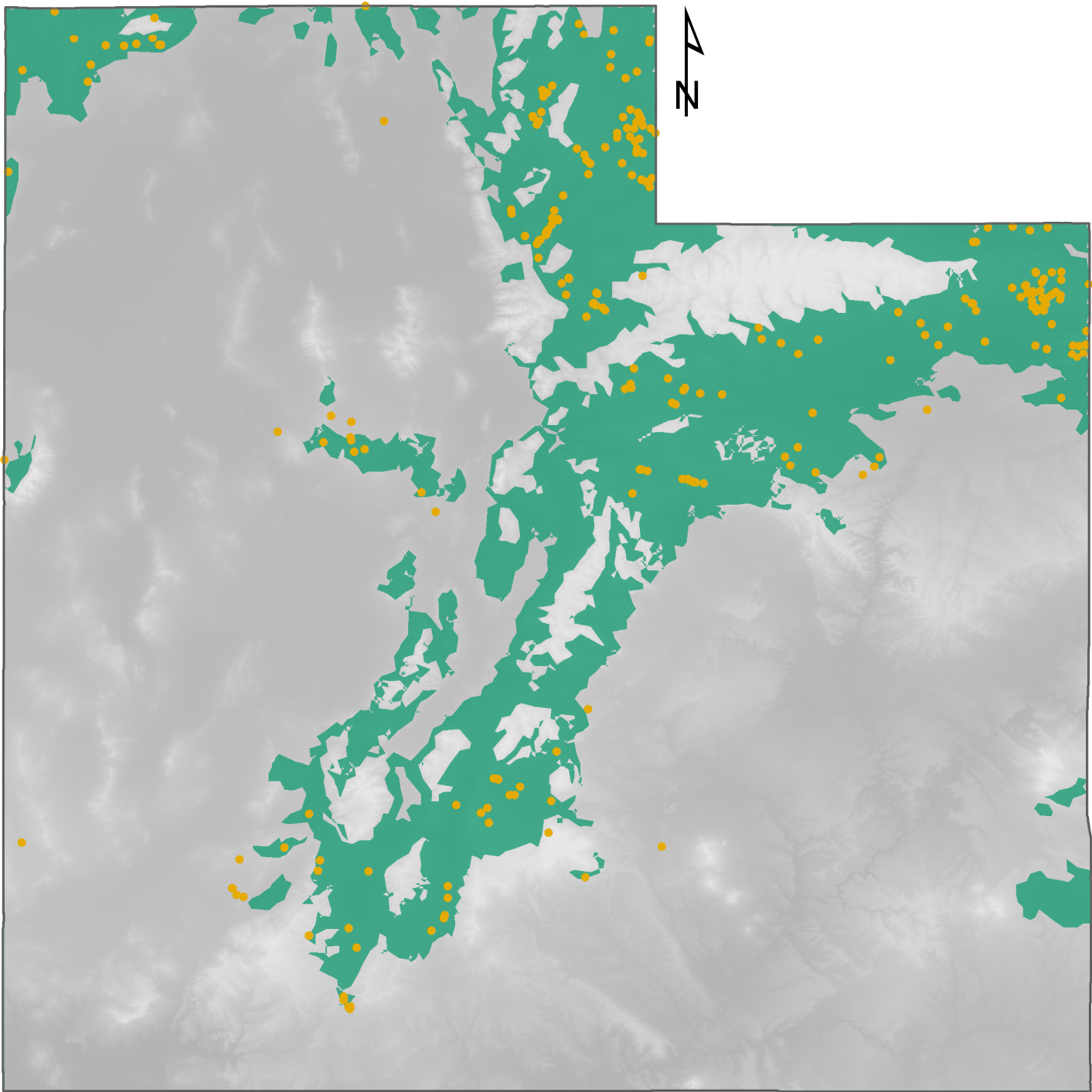
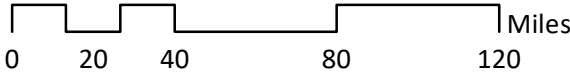


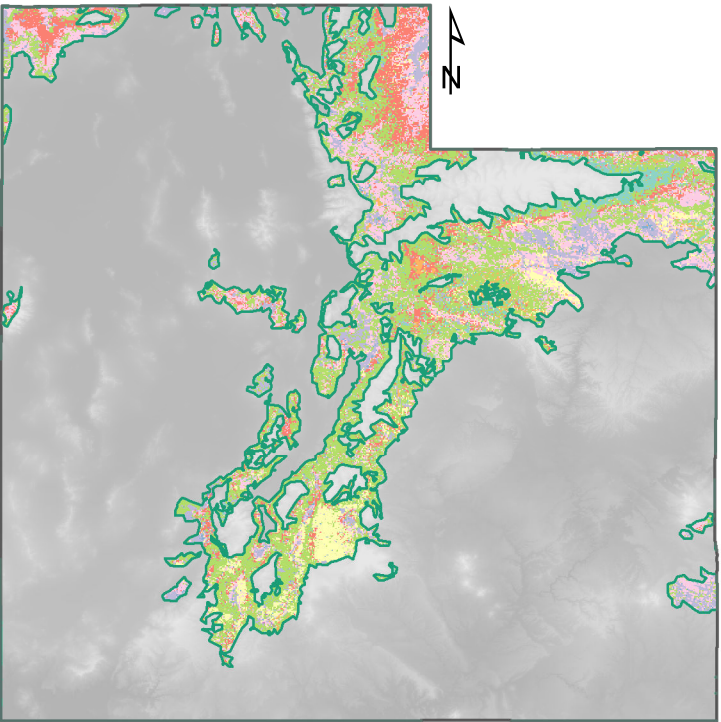
# Random Forest Current Sage-grouse Habitat Prediction Model Results



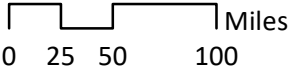
- RF Current**
- Habitat prediction
  - Sage-grouse observation
  - UT state boundary



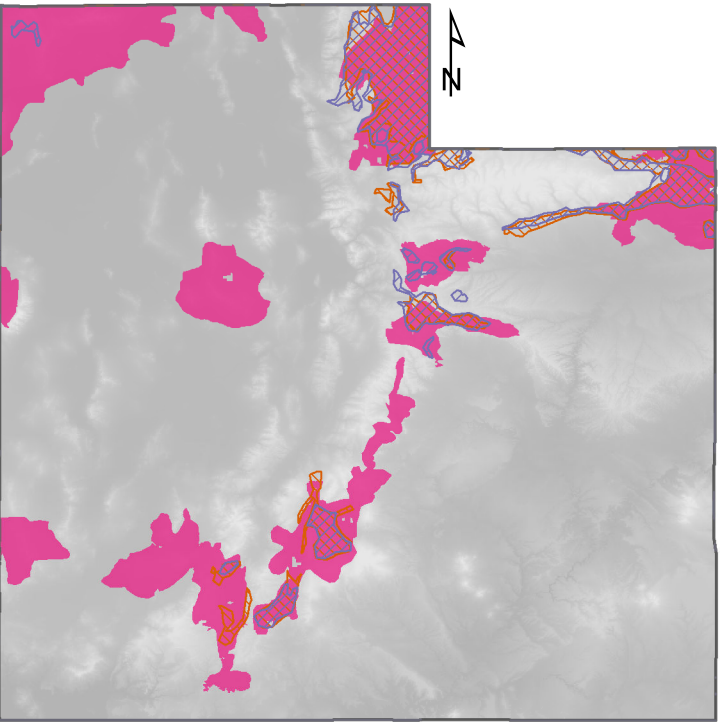
## Random Forest Current Sage-grouse Habitat Prediction Model Results Existing Vegetation Alignment



- RF Current**
- Habitat prediction
- Existing vegetation**
- Closed tree canopy
  - Dwarf-shrubland
  - Herbaceous - grassland
  - Herbaceous - shrub-steppe
  - No Dominant Lifeform
  - Non-vegetated
  - Open tree canopy
  - Shrubland
  - Sparse tree canopy
  - Sparsely vegetated
  - UT state boundary



## Random Forest SSP2-4.5 & SSP3-7.0 Emission Scenario Sage-grouse Habitat Prediction Model Results FWS PAC Alignment



- RF SSP3-7.0**
- Habitat prediction
- RF SSP2-4.5**
- Habitat prediction
  - FWS PAC
  - UT state boundary

