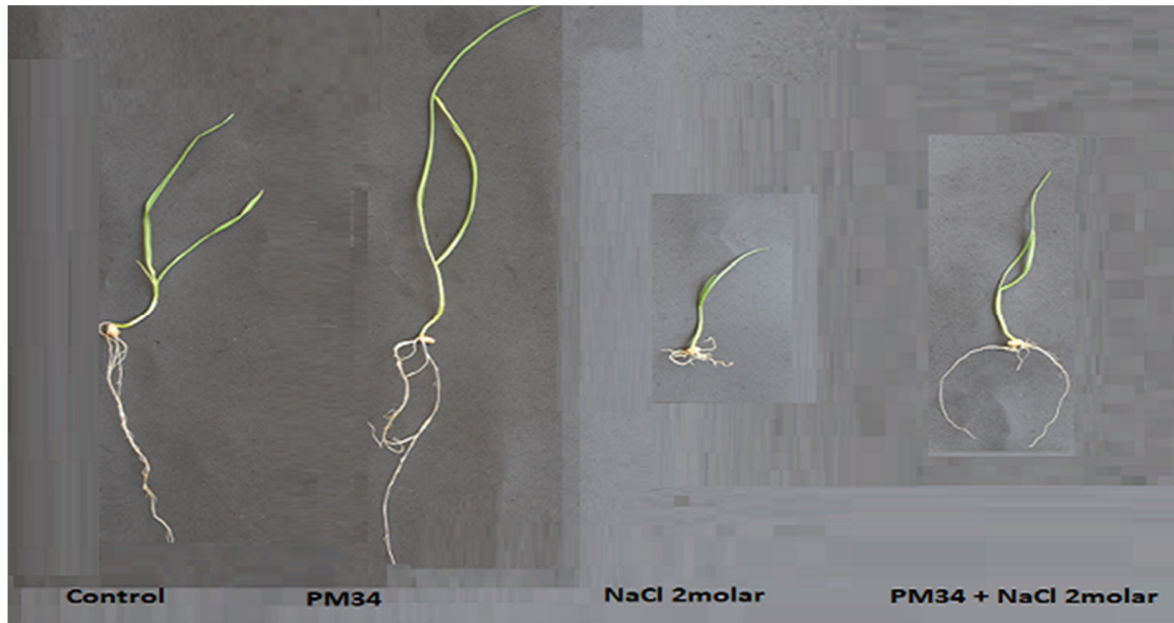
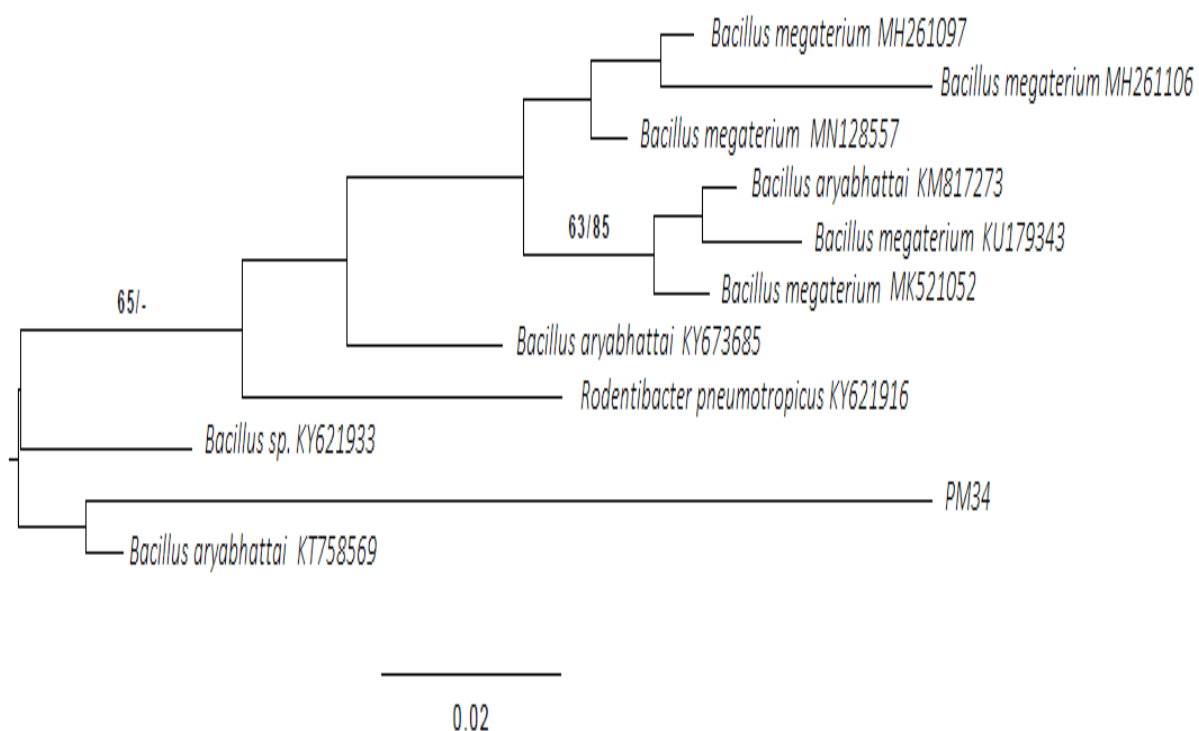


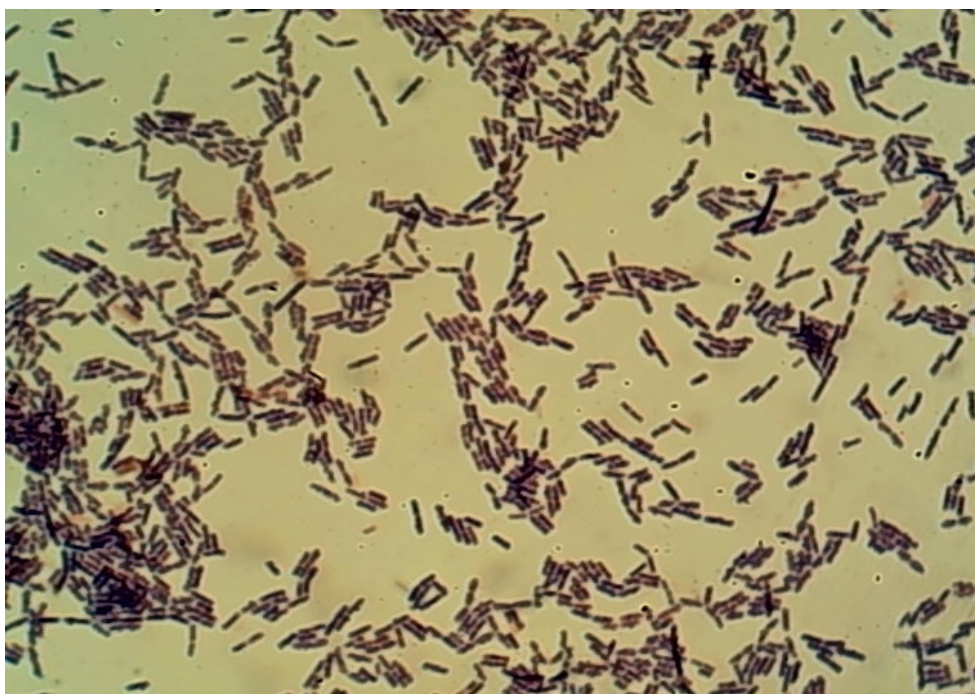
**Figure S1.** PCR product showing amplified *iturin* (A), *nifH* (B) and *acds* (C) gene fragment of bacterial strain PM34 on 1.5% agarose electrophoresis. Lanes: M, Molecular mass standards



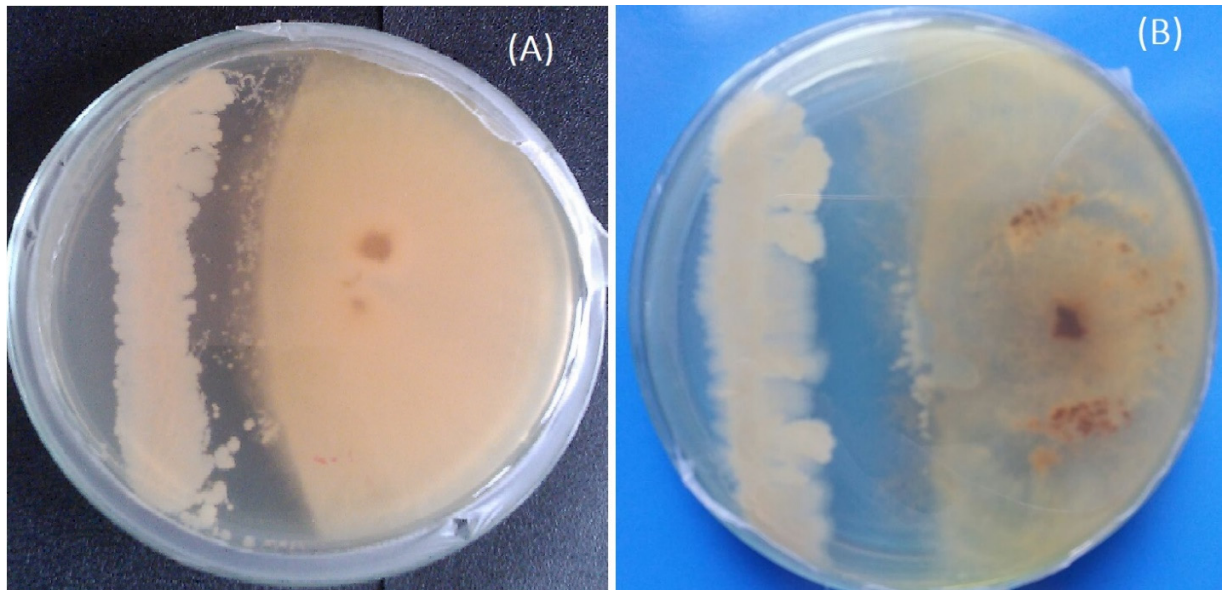
**Figure S2.** Effects of strain PM34 on growth of wheat seedlings under the 2molar NaCl stress.



**Figure S3.** The evolutionary history was constructed by Neighbor-Joining method. Bootstrap test—800 replicates



**Figure S4.** Gram staining results of strain PM34



**Figure S5.** Mycelial inhibition of *F. solani* (A) and *R. solani* (B) in dual culture experiment by strain PM34



**Figure S6.** Siderophore production by strain PM34





**Figure S7.** Zinc solubilization by strain PM34