

Article

Financing Romanian Agricultural Cooperatives' Investments for the 2023–2027 Horizon

Monica Laura Zlati ¹, Andrei Mirel Florea ², Valentin Marian Antohi ^{1,3,*}, Marius Sorin Dinca ³,
Florentin Bercu ⁴, Costinela Fortea ¹ and Stanciu Silviu ⁵

¹ Department of Business Administration, Dunarea de Jos University of Galati, 800008 Galați, Romania

² Department of Materials and Environmental Engineering, Dunarea de Jos University of Galati, 800008 Galați, Romania

³ Department of Finance, Accounting and Economic Theory, Transylvania University of Brasov, 500036 Brașov, Romania

⁴ Union of the National Branch of Crop Sector Cooperatives, 020491 Bucharest, Romania

⁵ Department of Food Science, Food Engineering, Biotechnology and Aquaculture, Dunarea de Jos University of Galati, 800008 Galați, Romania

* Correspondence: valentin.antohi@ugal.ro

Abstract: Agriculture represents an important sector of the Romanian economy, with certain vulnerabilities under the current geo-political context and pedoclimatic changes with a direct impact upon food security at national and European levels. This paper analyzes the possibilities for revitalizing the Romanian agricultural sector, which was affected by the excessive inflation (especially via the price increases of fertilizers and fuels) and drought, both generating significant cereal and agricultural production losses. The current research highlights the main investment options for the managers of 219 Romanian agricultural cooperative companies, including the available financing alternatives. In our view, the investments realized within the agricultural cooperative companies support the creation and increase in value added and reduce specific risks, consolidating the role and status of agricultural producers within the food chain. The research evaluates the Romanian agricultural investment typologies and establishes a model of assessing these investments by correlating the information obtained from the questionnaire distributed. The research methods include analyzing the reference literature, building the database, collecting and processing the questionnaires' observations, transforming the qualitative data into quantitative ones and modeling them with econometric instruments. The results obtained using the econometric model reveal the main investment directions to be integrating the production chains through economic association forms, including constructing and modernizing the warehouses, processing the primary products and obtaining higher value-added products, identifying various distribution channels, making the most of all available resources and focusing on digitalization, efficiency, circular economy and short supply chains. The study is of interest for the investors and managers of agricultural cooperative companies from Romania and Europe in view of securing sustainable development, enhancing the role of agricultural producers within the food chain and increasing efficiency of the agricultural activity, with a direct impact upon European food security.

Keywords: agricultural cooperative companies; investments; economic model; sustainable development



Citation: Zlati, M.L.; Florea, A.M.; Antohi, V.M.; Dinca, M.S.; Bercu, F.; Fortea, C.; Silviu, S. Financing Romanian Agricultural Cooperatives' Investments for the 2023–2027 Horizon. *Sustainability* **2023**, *15*, 2306. <https://doi.org/10.3390/su15032306>

Academic Editor: Keshav Lall Maharjan

Received: 23 December 2022

Revised: 22 January 2023

Accepted: 24 January 2023

Published: 27 January 2023



Copyright: © 2023 by the authors. Licensee MDPI, Basel, Switzerland. This article is an open access article distributed under the terms and conditions of the Creative Commons Attribution (CC BY) license (<https://creativecommons.org/licenses/by/4.0/>).

1. Introduction

Agriculture represents a very important sector of the Romanian economy, which was confronted with a severe crisis in 2022, induced by the Ukraine war blockages, generating significant increases in the price of fuels, fertilizers and medicines for plants and aggravated by the severe pedological drought and high temperatures. In the context of climatic changes and of a tense geopolitical situation, securing the food supply for the population has become of utmost importance. The Strategic National Plan for the 2023–2027 period envisions

enhancing Romanian farmers' resilience and competitiveness to ensure food security. This goal can be achieved only through investments, made available for the majority of potential beneficiaries (associated in cooperative companies or groups of producers) which jointly use the fixed assets, under a previously established schedule, ensuring a full and efficient use of those assets and a proper amortization of the initial investment.

Collective investments have been implemented, providing higher value-added, integrated production and processing chains and quality products at accessible prices for the final consumers.

The agricultural sector is confronted with a series of economic, environmental and social challenges, and a possible solution to overcome these challenges is the increase in resilience, an objective supported by the European Union through its specific policies [1]. The predictability of agriculture revenues is affected by the Ukraine war and by the exaggerated increase in energy, fuel, fertilizers and plants protection products' costs, as well as by the unfavorable climate and environmental conditions, which call for better instruments for managing the catastrophic and other specific agricultural risks. At the same time, this calls for improving the European legislation regarding modern amelioration techniques to have plants with a better drought and heat tolerance and improved resistance to specific bio-pests, which appear only in some EU regions or states, and providing efficient alternatives in terms of the price-quality ratio prior to forbidding the substances which were used previously and bypassed the rigors of EU regulations. Resilience in agriculture also encompasses preparing farmers to deal with external shocks by securing their minimal living standards and capacity to cultivate plants [2]. Some of these shocks can be predictable whilst some are not, and they can manifest in the short or long term, whereas governments have an essential role in providing a favorable environment for continuing and developing agricultural activity [3]. In this context of mitigating the risks generated by natural hazards, an *ex ante* approach is recommended, which prevents and limits the effects of disasters [4].

Increased poverty leads many consumers to buy the cheapest, lower quality products, which somehow contradicts the declarations of European leaders. To avoid double standards, an equal treatment in terms of quality and use of phytosanitary products should be applied for both EU and third countries' food products. Moreover, at the European level, viable alternatives in terms of quality-price ratio for pesticides should be offered, and only after that the pesticides which previously met the rigors of EU legislation and were deemed as safe for humans should be forbidden; each member state, as well between states correlating to the European level, has an obligation of setting up and maintaining protective forest curtains for the agricultural crops, creating and maintaining the microclimate, increasing the population living standards to be able to consume eco and bio products, increasing the share of ecological products into total agricultural production, increasing the association of farmers in economic entities (cooperative companies and producers groups) and developing and consolidating the economic cooperation forms via strategic investments at regional and national level to support competitiveness, capitalization and sustainability of member farmers in the single market competition.

By means of associative forms with an economic role and as a key factor in the horizontal coordination with the role of collecting production and ensuring a continuous flow within the distribution chains, the foundations of transport and processing networks can be laid [5]. At the same time, they also contribute to the development of vertical supply chains, eliminating competition imbalances and strengthening farmers' market power [6].

The integration of collaboration structures within supply chains to adapt production processes to consumers' demand, the increase in accessibility and the reduction of costs related to production, storage and delivery can be achieved by implementing technological and innovative processes [7].

At the European level, according to the Global Index of food security (GSI), high levels are registered by countries such as Finland (first place in 2022 in the ranking of the 113 countries considered, with a score of 83.7 points) [8], followed by Ireland (second best place with 81.7 points), France (80.2 points, fourth place), Holland (80.1 points, fifth

place) and Sweden (seventh place, 78.7 points). Romania is in 23rd place with 68.8 points and ranks last within EU member countries in terms of accessibility, sustainability and adaptation. In what concerns availability, Romania with 60.6 points outranks Greece and Slovenia, being third in the end of the rankings. This situation is due to the decline in the domestic industrial capacity, which made Romania a net importer in almost every sector (for many inputs), although it has a high potential and considerable natural resources. In what concerns food quality and food safety, Romania ranks 17th out of 26, before Slovakia, Czech Republic, Hungary and Italy. Also compared to Ukraine, Romania has a better standing for all monitored categories of accessibility, availability, quality and safety, sustainability and adaptation. The data regarding Romania's position according to the GSI were summarized in Table 1.

In dynamics, in the ranking realized by The Economist Intelligence Unit, part of The Economist Group, Romania has vulnerabilities, compared to the EU average, regarding the change in average price of food items (with 84 points compared to 88 points, the EU average [9]), with 95.8 points as a share of the population affected by absolute poverty (people living with less than 3.2 USD per day), as compared to 99.2 points, the EU average. Romania also displays an unfavorable index of the inequality adjusted income, with a 66.4 point index compared to 76.3 points, the European average. In the agricultural trade chapter, Romania stands above the average of European countries, with 76 points in its 2022 score, with import tariffs for agricultural products also higher than the European average (data from World Trade Organization). In the same chapter of agricultural trade (from the point of commercial freedom, quantified through the tariff and non-tariff barriers to trade), the global index of food security, according to Heritage Index of Freedom [10,11], placed Romania around the European average (79.2 points compared to 79.5 points, the European average score).

Concerning food safety programs, Romania is well represented, with an index of 100 points compared to the European average of 96 points and stands out in financing food security programs, the nation-wide coverage and functionality of the programs implemented by the Romanian government [8].

In the availability chapter, the measure of access to agricultural inputs, as a composite index of measuring the resources available for farmers [8], places Romania a little above the European average (73.8 points against the European average of 72.9 points). Romania stands in the upper echelon concerning access to basic financial services, annual variation of farmers' prices and access to consultancy and agricultural development services. In research and innovation in agriculture, there is a deficit of governmental financing (the proxy index of agricultural evaluation), of technology access, of education and of agricultural resources which could promote agricultural production by ensuring an integrated use of land, labor and investments [8]. According to the same source, Romania is above the European average with policies facilitating the development of innovating agricultural technologies (with a score of 100 points compared to 75.6 points, the European average) [12].

Table 1. Romania’s position towards EU countries according to the Global Index of food security.

Rank by GSI	UE27 Country	Overall Score	% by Romanian Overall Score	Affordability	% by Romanian Affordability Score	Availability	% by Romanian Availability Score	Quality and Safety	% by Romanian Quality Score	Sustainability and Adaptation	% by Romanian Sustainability Score
1st	Finland	83.7	121.7%	91.9	108.0%	70.5	116.3%	88.4	113.5%	82.6	175.4%
2nd	Ireland	81.7	118.8%	92.6	108.8%	70.5	116.3%	86.1	110.5%	75.1	159.4%
4th	France	80.2	116.6%	91.3	107.3%	69	113.9%	87.7	112.6%	70.3	149.3%
5th	Netherlands	80.1	116.4%	92.7	108.9%	70.7	116.7%	84.7	108.7%	69.2	146.9%
7th	Sweden	79.1	115.0%	91.9	108.0%	68.3	112.7%	85	109.1%	68.3	145.0%
10th	Portugal	78.7	114.4%	90	105.8%	77	127.1%	79.8	102.4%	64.5	136.9%
12th	Austria	78.1	113.5%	91.3	107.3%	67.1	110.7%	81.2	104.2%	69.7	148.0%
14th	Denmark	77.8	113.1%	92.1	108.2%	63.2	104.3%	89.1	114.4%	63.8	135.5%
16th	Czech Republic	77.7	112.9%	91.3	107.3%	69.4	114.5%	76.3	97.9%	70.3	149.3%
17th	Belgium	77.5	112.6%	92.6	108.8%	64.6	106.6%	88.4	113.5%	61	129.5%
19th	Germany	77	111.9%	87.9	103.3%	67	110.6%	79.9	102.6%	70.8	150.3%
20th	Spain	75.7	110.0%	89	104.6%	63.1	104.1%	81.2	104.2%	66.4	141.0%
21st	Poland	75.5	109.7%	87.4	102.7%	63.8	105.3%	81.5	104.6%	66.7	141.6%
27th	Italy	74	107.6%	89.5	105.2%	68.7	113.4%	75.9	97.4%	57.3	121.7%
29th	Bulgaria	73	106.1%	85.8	100.8%	66.5	109.7%	79.5	102.1%	56.6	120.2%
31st	Greece	72.2	104.9%	88.5	104.0%	58.3	96.2%	80.8	103.7%	57.3	121.7%
34th	Hungary	71.4	103.8%	86.7	101.9%	63.3	104.5%	74.4	95.5%	57	121.0%
36th	Slovakia	71.1	103.3%	89.1	104.7%	55.3	91.3%	77.9	100.0%	57.6	122.3%
45th	Romania	68.8	100.0%	85.1	100.0%	60.6	100.0%	77.9	100.0%	47.1	100.0%

Source: Adapted by the authors after [8].

To improve Romania's position to the European Union's level, the authors consider investments in agricultural cooperatives as the main solution. The methods of improving Romania's position to the European Union's level refer to supporting, creating and increasing added value, reducing specific risks and consolidating the role and status of agricultural producers in the food chain. In 1990, all Romanian agricultural cooperatives were dissolved or transformed into agricultural societies. Until 1st January of 2005, no agricultural cooperatives were established. Starting with this date, modern cooperatives were founded, operating according to the International Alliance of Agricultural Cooperatives' principles. They are currently in full reform, development and efficiency of activity. In Romania, according to National Trade Registry Office, in 2021, 2641 agricultural cooperatives were established [13]. In 2021, a number of 1152 agricultural cooperatives generated a turnover of 588 million euros. Of the total 2641 cooperatives registered at the National Trade Office, 170 appeared as deregistered and 2389 in operation. In the last 5 years, the number of agricultural cooperatives that submit their financial statements (and hence prove interest for continuing their activity) increased at an annual average of 17.4% during the 2015–2021 period [13]. As such, in 2021 the number of cooperatives submitting their financial statements increased by 153.7%, compared to 2015. Also, almost half (46.9%) of the profitable cooperatives carry out agricultural activity or auxiliary activities, while 48% carry out trading activities.

The overall table of agricultural cooperatives' financial indicators indicates a favorable evolution, yet there is a need for increasing the capitalization via new investments.

These considerations require improving investments' financing methods, which is the object of the current research, with the following specific objectives:

1. Identifying the current context's vulnerabilities for Romanian farmers and cooperative agricultural companies;
2. Identifying the opportunities for development and for limiting Romanian agricultural sector's vulnerabilities;
3. Creating an econometric model for optimizing Romanian agricultural cooperatives' access to financial funds;
4. Creating a balanced scorecard with viable solutions for agricultural development and leveling Romania's agricultural food products' trade balance in accordance with the needs of the current unfavorable context.

The study continues with presenting a review of the reference literature, the research methodology and the logical scheme, the results and the discussions, whilst the final section is dedicated to presenting the relevant conclusions with an impact upon national level decision makers.

2. Literature Review

The interest of specialists for agricultural sector's sustainable development increased significantly starting with the 2010s, especially in areas such as food security and climate change, global food crisis, sustainable development, agricultural management, ecological agriculture, funding micro-farms, agricultural management systems, agriculture value-added and agriculture under uncertain conditions.

Studying the 1953 sector articles published by the Web of Science platform during the 1975–2022 period, we find that over 900 articles pertain to the last 5 years (2018–2022); the Hirsch index of the publications was of 64 points, whereas the average citation for one article is of 11.34.

Using the 1.6.18 version of the Vosviewer software, we have realized a diagram which groups the 1953 articles in clusters of research interests such as agricultural investments, agricultural credit, agricultural markets, the management of agricultural entities, food security and agriculture in Romania from the efficiency, European funds financing, sustainable agriculture and Common Agricultural Policies (Figure 1).

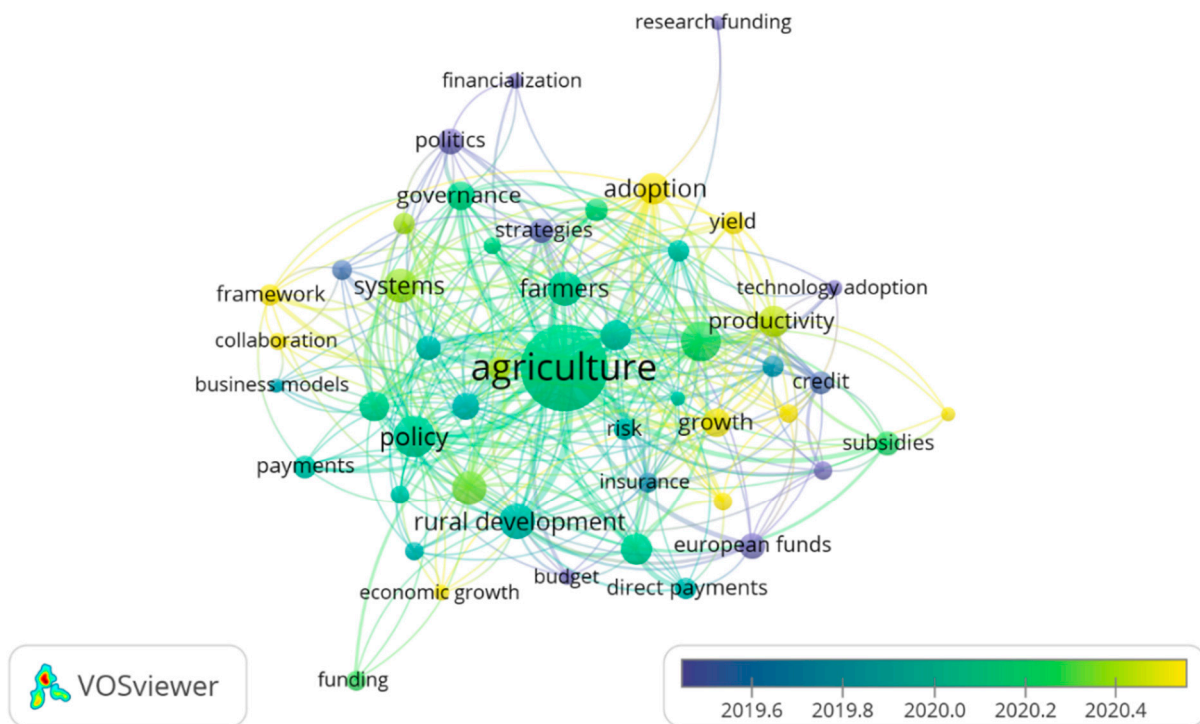


Figure 1. The bibliometric analysis regarding research interests concerning agriculture funding in the reference literature. Source: Elaborated by the authors, using Vosviewer software.

The analysis of the specialized literature regarding agriculture financing options in the European Union highlighted a concern of researchers for this field through 158 articles published in the specialized literature and included on the Web of Science platform, with a Hirsch index of 14 points and a citation rate of 3.69 citations per item. This proves this issue is of interest for the academic and scientific environment, responding to the need for the efficiency of the agricultural sector through adequate financing (Figure 2).

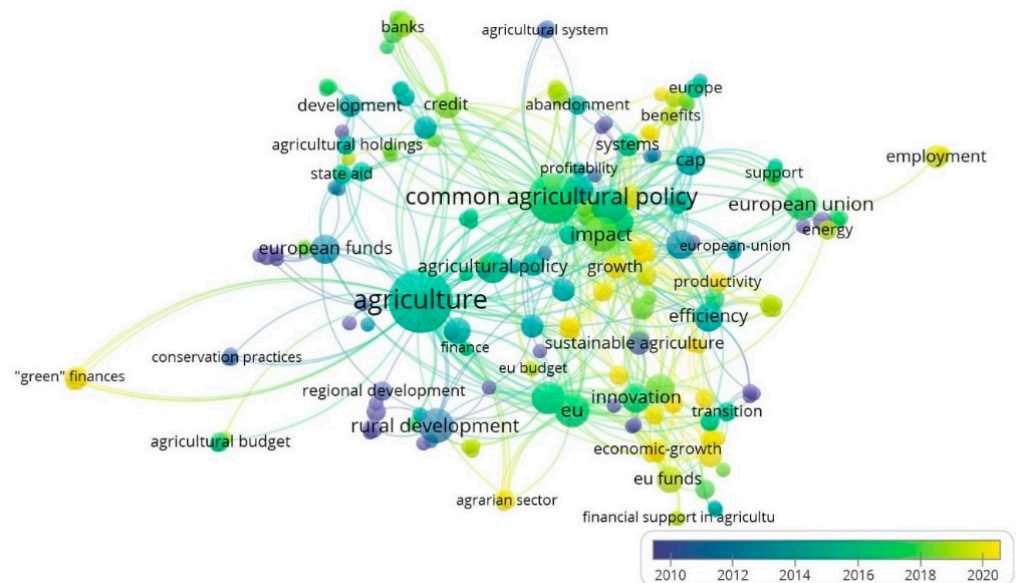


Figure 2. The bibliometric analysis on the financing options for the European agriculture in the reference literature. Source: Elaborated by the authors, using Vosviewer software.

Based on the analysis carried out, the areas of interest were grouped according to the competition criteria, 22 in number, and their financing through government aid financing programs and the economic financing conditions that have an effect on regional and rural development and make more effective the agricultural sector. Also, the researchers' interest was directed towards investment mechanisms, agricultural financing, agricultural banks and agricultural cooperatives for agricultural support, agricultural structural funds, the multiannual financing framework, direct payments in agriculture, the development of green agriculture, the common agricultural policy and the financing of this European policy, the support mechanisms for financing agriculture, agricultural cooperatives, conservation practices, agricultural investments, European funds for agriculture, dedicated financing programs, the level of allocating funds for agriculture and the absorption rates for agriculture, the degree of implementation of the reforms, structural and investment funds, programs for farmers, co-financing in agriculture, agricultural development strategies, costs in agriculture, agricultural management and agribusiness.

In the paper [14] Territorial differences in agricultural investments co-financed by the European Union in Poland, the authors identified the relationship between the support investments of the European programs for the development of agriculture and economic development in Poland, based on the fragmentation and heterogeneity of agricultural land and by comparisons with the agricultural conditions and the structure of the Polish agricultural sector. The authors showed that the agricultural development and financing are in a direct proportional relationship for agricultural farms with more than 10 hectares in operation, this being supported by much previous research, as the authors show in the conclusions of their study. Access to European funds for support investments was mostly achieved by large farms with high productive potential, which led to production concentration and specialization, respectively, to technological progress in agriculture. Another interesting conclusion of the study was that investing in capital resources reduced labor demand, which bolstered labor force's specialization and access to better paid sectors of support services and maintenance, an aspect appreciated by the authors as essentially positive for economic development.

The research of Paun C. and Ivascu C. [15] analyzes the impact of European financial support measures on the agricultural sector's development, highlighting that the financial instruments related to the common agricultural policy will focus ever more on rewarding innovation, the efficient and profitable development of the sector minimizing the state's aids and subsidies and on increasing agriculture's resilience and sustainability in the global market. The authors show that there are some very important aspects that require innovative solutions, these being dependent on the pedoclimatic conditions and the climatic changes in relation to the geographic location. The current use of expensive climate change forecasting technologies could make the difference in the efficiency of agricultural policies, land improvement and optimizing the profitability indicators needed in a global competition. According to the study, at a historical level, a direct relationship was determined between net subsidies and the volume of agricultural production in the European Union. The authors believe that the future agriculture policies and reforms should stimulate investments and the adoption of revolutionary technologies so that the common agricultural market and the common agricultural policy are completely reformed and prepared for global competition. Another significant aspect discussed by the authors is the flexibility of the investment programs, considered too rigid and not very sensitive by farmers.

According to Kiryluk-Dryjska E. et al. [16], the financial support for investments in agriculture increases the structural homogeneity of agricultural holdings and the consolidation of operators that manage to attract financing. The key factors resulting from the study in Poland are represented by access to financing, the size of the agricultural entity and the level of efficiency of the agricultural management. The authors reveal that the efficient use of investments requires a balance between the primary factors, namely land ownership and the size of the capital. As such, the investment balance ensures, under conditions of continuity, managerial efficiency, while the imbalance of these elements weakens agricultural

entities and decreases their ability to use funds, reducing the effects of the financing. In the conclusions, the authors show that the application for the pro-investment measure is differentiated according to the farmers' interest in the program, based on the geo-spatiality criterion. The results suggest that investment financing programs increase disparities between the agricultural entities, depending on the availability of labor resources and geo-climatic conditions (geospatial differentiation).

In another approach [17], the authors show that significant additional capital is needed to achieve a sustainable agricultural production, with an appropriate quality and affordable prices for consumers, capital that cannot be attracted solely from financial markets, but through a combination of public funds and private dissociated funds. In this sense, the financing from the concessional development-oriented fund can be the solution to ensure the additional financing to achieve the objectives of sustainable development in agriculture. These funds are usually grants, concessional loans, subordinated loans or financing tranches between affiliated entities, but they usually add risks regarding the perception of private investors, guarantee risks and require technical support measures, including a feasible and efficient development plan. During mixed financing, it is important to follow the investments' impact on the entity and the regional socio-economic development through key monitoring items such as: socio-economic performance, development of investment strategies, improvement of the structure of agricultural entities, reduction of risks and control of intermediate transactions. According to the authors, there are four levels of mixed financing, respectively: permanent mixed financing whereby the financing requirement is provided only from the combination of public-private financing with additional surplus from concessional loans; transitional mixed financing whereby some government agencies partially guarantee for agricultural investment funds (government backed guarantees); adjustable mixed financing of the Social Impact Incentives type; mixed impact financing whereby the concessional capital covers the monitoring or impact costs (agricultural risk management tools).

Rolfe, J. et. al. [5] show that accessing public funds requires consistency (achieving the proposed goal), demonstrating the compliance with the access guidelines through plan documents and confirming the legitimacy of access to financing and the traceability of the activity (control). Instead, accessing private financing requires compliance with the principles of efficiency (transfer of funds), equal access to financing, mutual solidarity and legitimacy.

According to some authors [18], agriculture financing represents an essential factor for sector development, especially in underdeveloped countries. The authors showed that agriculture investments are the guarantee of food security and sustainable agriculture, securing the food sources for the population of underdeveloped countries. Other authors [19] showed that technological development represents the key for reaching agricultural efficiency, and blockchain technology could be key for improving credit access and reducing the informational asymmetry, lowering the cost of agricultural financing.

In financing small farms [20], the authors of a study called Rural Finance, Capital Constrained Small Farms, and Financial Performance: Findings from a Primary Survey showed that financial constraints and capital access limitations reduce entities' capacity to use optimally their resources and hinder small agricultural entities' sales increase.

Financing through government agricultural policies [21] generates conditions for sustainable economic growth, especially for emergent markets, where limited funding access impairs agricultural efficiency by reducing market opportunities of sector companies. As such, the authors appreciate that governmental financial policies can reduce the pressure of food security especially by reducing creditors' risk aversion and supporting agricultural insurance. A study realized for ASEAN countries for the 2009–2020 period [22] highlighted the role of agricultural financing for rural sustainable development. This study used a fixed-effects model (FEM) to prove that the congruence of adequate agricultural financing and of rural development has a significant positive role in sustainable development and generates durable economic growth.

The authors of this study [23] used the scenarios method to analyze four agriculture financing schemes for the 2025 horizon, showing that a multidimensional and complex agricultural sector, including agricultural financing, using technology and innovation in agriculture, financial chains, configuring markets and institutional innovation, support agricultural sector's development by increasing convergence and economic diversification, especially for rural economies, which are fully dependent upon the agricultural sector.

A group of authors [24] examined US agricultural cooperatives' financial performances and proved that reducing or eliminating financial stress increases their rate of return on equity (ROE) and rate of return on assets (ROA) and decreases interest rates over time.

By decomposing the risk function, the authors concluded that the financial stress appears because assets have a reduced efficiency, and the profitability is low. The authors [25] used an equation system to analyze US agricultural cooperatives' financial performances according to their dimensions and specialization and concluded that risks are influenced by the diversification of the cooperative company production, such as that profitability, indebtedness degree and size of debt positively influence financial performances.

Another study [26] analyzes the effect of capital constraints upon agricultural cooperatives' economic growth, using a data panel with 669 US sector companies. The authors of this study show that long-term debt funding and company size had a positive influence upon agricultural companies' economic growth and that free cash flows and reinvested equity had a critical contribution for small and medium agricultural cooperatives' assets increase. The authors concluded that large agricultural cooperatives are less financially exposed and have a lower cash flow pressure.

A study based on a literature review [27] analyzed agricultural entities' performance, governance and financing, revealing that the causal evidence of the relations between these units' management and governance determines performances, even under long-term debt constraints, whilst the heterogenous component of members' objectives and attitudes in terms of commitment and participation leads to inefficiency.

Marcis, J. et al. [28], using the meta-analysis method to evaluate the sustainability of agricultural cooperatives' performances, showed that the context of performances' evaluation has not reached a scientific consensus in the reference literature, as there are many evaluation models based on different items, most of them focusing on the values and preferences of decision factors which are then incorporated into assessing the sustainability. The authors propose all three dimensions of sustainability to be included in the evaluation model in an integrative way, preserving a balance between the economic, social and environmental aspects.

Other authors [29] show that agricultural supply chains impact the small agricultural farms' capital constraints, forcing the usage of intermediary platforms to secure the economic flows. This aspect creates a financial strain, which directly threatens the supply of resources needed for the primary production cycle and generates high financing fees, which significantly increase the overall costs, even though production costs are not very high. The use of intermediary platforms supports efficiency increase for small companies, whilst intermediaries' social responsibility could become essential in providing a win-win situation for farmers, platforms and the entire supply chain.

Markus Hannish [30] claims that economic association forms, respectively, the agricultural cooperatives which keep the private domestic sector fair and strong. The author states there are significant economic size differences between the ten biggest Romanian agricultural cooperatives (they are about 100 times smaller) and their EU counterparties. These differences manifest themselves also in what concerns the average number of members of an agricultural cooperative company, with Romania recording 100 to 500 times fewer members in an association (the biggest agricultural cooperative from UE-27 counts in excess of 8000 members).

Romania needs to increase the weight of profitable agricultural cooperatives, which requires a significant increase in their sales revenues to become more attractive for investors/financing entities.

Programs of supporting the investments “to create rural infrastructure services, such as supply, warehouses, post-harvesting services, logistic and marketing services for the development, professionalizing, integrating the production of small, middle and also big farmers provided they associate into cooperatives and comply with the cooperative principles” are also needed.

To secure strong agricultural cooperatives in Romania, Hannish [30] suggested the following lines of actions:

Identifying the main obstacles for the growth and integration of cooperative companies inside the chain;

Setting up a chain of “test cooperatives” for which to secure the financing of research and development activities;

Building a statistical data management system to have a long-term analysis of cooperatives’ economic and financial activity;

Analyzing the registration procedure and the follow-up procedures. In many EU-27 countries, the sectorial/federations of cooperatives accompany this process with the verifications of business plans and standardized documents;

Consolidating the reporting activities and centralizing the data, as a first step toward a cooperative auditing organization, as in most EU-27 countries.

The specialized literature shows that the impact of agricultural financing is significant; the financing action is necessary and useful for the development of the agricultural sector based on professional investment opportunity analyses. However, in the conditions of the global orientation of European agricultural trade, a reprioritization of financing is required in the sense of supporting the innovative act and the contribution of technology in the field which should balance the link between the need for labor and capital, with an emphasis on the efficiency of productive processes, increasing profitability and ensuring production sustainability.

3. Methodology

The research is based on the logical schematic presented in Figure 3.

To evaluate the Romanian agricultural investments’ typology, the research used a questionnaire investigating the available investment options, which was sent to 230 agricultural cooperatives in the January 2021–March 2022 period. The sample is representative, as verified by the Cochran test, with a 2% error margin and a 98% significance threshold (the minimum required sample was of 188 agricultural cooperatives).

At the time of the questionnaire’s release, 2641 agricultural cooperatives were registered in Romania, of which only 1200 had submitted their financial statements.

The selection criteria imposed active agricultural cooperatives, with a positive sales turnover of more than 20,000 euros, profit of more than 5000 euros and with fully Romanian private property in the last three years. A number of 230 agricultural cooperatives met these conditions.

The interrogation was performed via e-mail, with confirmation of receipt and with returning in cases of no initial response. The questionnaire was addressed to managers of the cooperatives, and after sending the questionnaire, they were also contacted by phone. An online questionnaire (via Google Forms) was also sent, with the respondent having the opportunity to fill it in either in written or electronic format. Of the total 230 selected cooperatives, 219 offered complete responses to all the items from the questionnaire and were included in the sample. Three cooperatives did not answer, whereas eight were excluded as they offered incomplete answers to questionnaire items.

The structure of the questionnaire was developed based on the most used financing options available in Romania. It started from the idea of quantifying the investment directions of the cooperatives and the selected sources of financing. The questionnaire was structured starting from the need for investment and identifying the appropriate funding sources. Accordingly, the possibility of financing (Figure 3) from own funds, from bank loans, from mixed funds (bank loans–own funds, European funds–bank loans or European

funds–own funds) and European funds (the identification of the funds to cover own contribution and the need to call on guarantee funds was included in the questionnaire) had been identified.

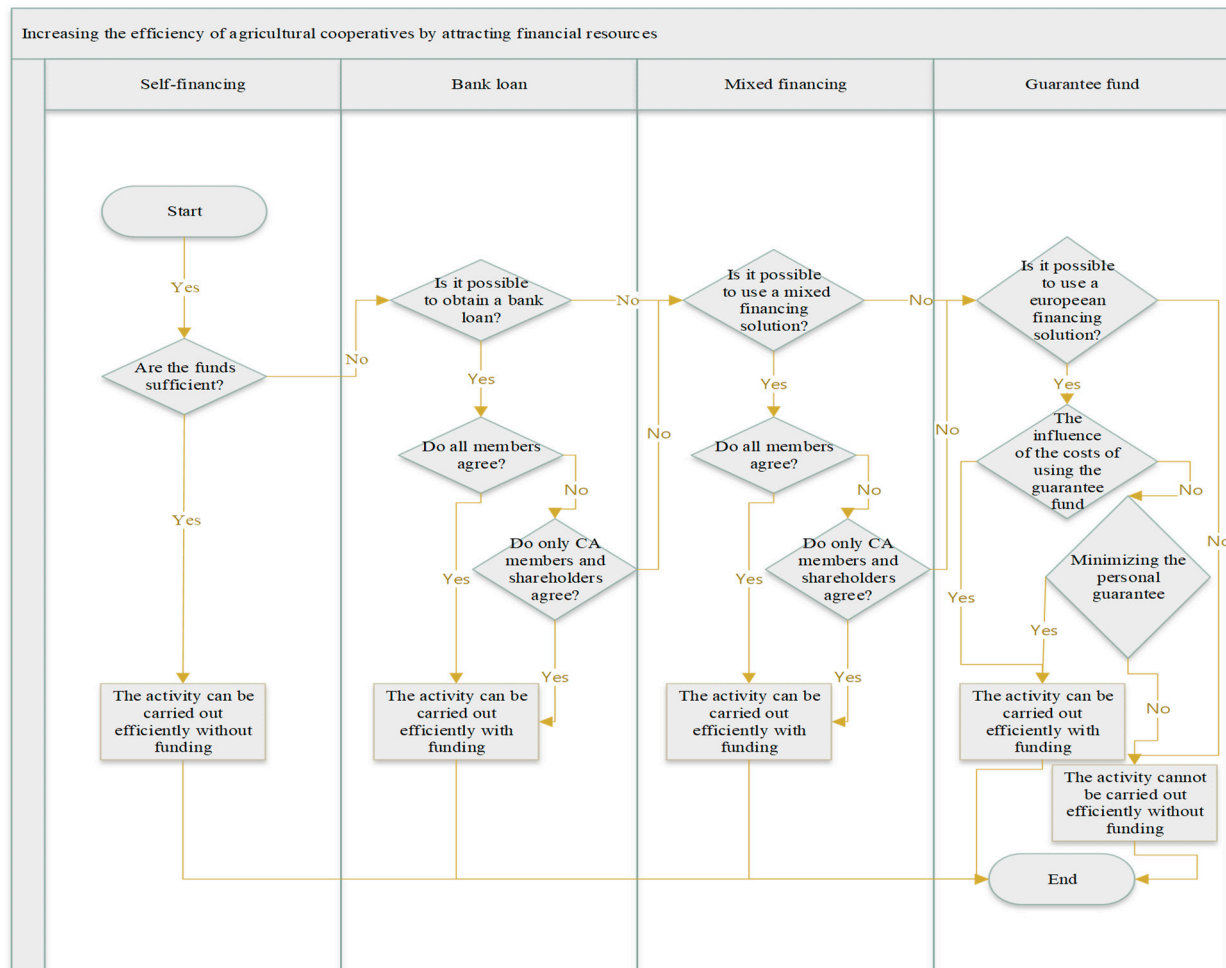


Figure 3. Schematic logic of the study. Source: Realized by the authors.

The variables included in the questionnaire and subsequently used in the modeling are presented in Table 2.

Table 2. The variables studied via the structured questionnaire.

Null Hypothesis	Description of the Variables	Type of Answer	Sig.	Decision
f0	Application for grants	Yes (2)/No (1)	0	Reject the null hypothesis.
f1	Destination of grants: acquisition of machinery	Yes (2)/No (1)	0	Reject the null hypothesis.
f2	Destination of grants: warehousing-processing	Yes (2)/No (1)	0	Reject the null hypothesis.
f3	Destination of grants: new technologies	Yes (2)/No (1)	0	Reject the null hypothesis.
f4	Destination of grants: common investments	Yes (2)/No (1)	0.001	Reject the null hypothesis.
f5	Destination of grants: horticulture	Yes (2)/No (1)	0	Reject the null hypothesis.
f6	Destination of grants: zootechnics	Yes (2)/No (1)	0	Reject the null hypothesis.
f7	Lack of application from lack of funds	Yes (2)/No (1)	0	Reject the null hypothesis.
f8	Lack of application from lack of collaterals	Yes (2)/No (1)	0	Reject the null hypothesis.

Table 2. Cont.

Null Hypothesis	Description of the Variables	Type of Answer	Sig.	Decision
f9	Lack of application from excessive indebtedness	Yes (2)/No (1)	0	Reject the null hypothesis.
f10	Lack of application from not having enough capital	Yes (2)/No (1)	0	Reject the null hypothesis.
f11	Acquisition of commonly used machinery	Yes (2)/No (1)	0.003	Reject the null hypothesis.
f12	Acquisition of specific machinery	Yes (2)/No (1)	0	Reject the null hypothesis.
f13	Acquisition of solar equipment	Yes (2)/No (1)	0	Reject the null hypothesis.
f14	Acquisition of zootechnical equipment	Yes (2)/No (1)	0	Reject the null hypothesis.
f15	Warehousing investments	Yes (2)/No (1)	0	Reject the null hypothesis.
f16	Primary investments	Yes (2)/No (1)	0	Reject the null hypothesis.
f17	Investments in processing of finished products	Yes (2)/No (1)	0.043	Reject the null hypothesis.
f18	Labor investments	Yes (2)/No (1)	0.037	Reject the null hypothesis.
f19	Financing project contribution with self-financing generated funds/equity	Yes (2)/No (1)	0	Reject the null hypothesis.
f20	Financing project contribution with loans	Yes (2)/No (1)	0	Reject the null hypothesis.
f21	Financing project contribution with mixed funds, equity and loans	Yes (2)/No (1)	0	Reject the null hypothesis.
f22	Co-financing by each member according to its share in the agricultural cooperative	Yes (2)/No (1)	0	Reject the null hypothesis.
f23	Co-financing from previously gathered funds	Yes (2)/No (1)	0	Reject the null hypothesis.
f24	Covering the loan guarantees by each and every member	Yes (2)/No (1)	0	Reject the null hypothesis.
f25	Covering the loan guarantees according to the share in the agricultural cooperative	Yes (2)/No (1)	0	Reject the null hypothesis.
f26	Covering the loan guarantees by other means	Yes (2)/No (1)	0	Reject the null hypothesis.
f27	Most likely intention to make appeal to the Guarantee Fund	Yes (2)/No (1)	0.047	Reject the null hypothesis.
f28	Clear and certain intention to make appeal to the Guarantee Fund	Yes (2)/No (1)	0	Reject the null hypothesis.
f29	Not appealing to the Guarantee Fund due to supplementary costs	Yes (2)/No (1)	0	Reject the null hypothesis.

Asymptotic significances are displayed. The significance level is 0.05. Source: Realized by the authors.

The following working hypotheses were formulated to test the investment typology:
H1: Financing the agricultural cooperative via the Guarantee Fund is accepted by the producers only if the financing entails no supplementary costs and if it is useful for developing the main activity sectors, ensuring technological development or developing the key sectors of warehousing/conditioning/processing/selling as the market registers deficits in these areas;

H2: Financing the agricultural cooperative via the Guarantee Fund is accepted by the producers in view of minimizing the personal guarantees, allocating the funds only to the base activity or to the warehousing/conditioning/processing/selling sectors, following the investment priorities toward technologization and development to enhance social equity inside the cooperative;

H3: In the absence of the access to the Guarantee Fund or after it was spent, the easiest financing solution is covering the guarantee by other means, aspect which covers the basic

economic needs of the cooperative and ensures the efficient use of the loan, correlated with co-financing from already collected funds.

The model of evaluating the investment typology is based on measures' correlations, using the Pearson coefficient after applying the correlation testing procedures.

We hereby define the intensity of the correlation of the model measures using the Equation (1):

$$\rho_{F_x, F_y} = \frac{\text{cov}(F_x, F_y)}{\sigma_{F_x} \sigma_{F_y}} = \frac{\mathbb{E}[(F_x - \mu_x)(F_y - \mu_y)]}{\sigma_{F_x} \sigma_{F_y}} \quad (1)$$

where:

ρ_{F_x, F_y} —Pearson coefficient;

cov—covariance;

F_x, F_y —the models' variable, correlated via Pearson test

$\sigma_{F_x} \sigma_{F_y}$ —variables standard deviation

\mathbb{E} —expected value

μ_x, μ_y —average values of the measures.

The qualitative variables of the model were transformed into dichotomic variables, each *Yes* option being assigned the value of 1, whereas the *No* option received the value of 0. A database resulted, which was subsequently tested on a regression using the Pearson correlation test from equation 1.

The values were interpreted using a structural matrix, which responded to the following correlation intensity tests (see Equations (2)–(5)).

$$\rho_{F_x, F_y} < 0, \sum f_x(\rho_{F_x, F_y} < 0) < 4 \text{ Weak intensity, lack of financing interest} \quad (2)$$

$$\rho_{F_x, F_y} < 0.2, \sum f_x(\rho_{F_x, F_y} < 0) < 8 \text{ Average intensity, minimum financing interest} \quad (3)$$

$$\rho_{F_x, F_y} < 0.3, \sum f_x(\rho_{F_x, F_y} < 0) < 12 \text{ Average intensity, average financing interest} \quad (4)$$

$$\rho_{F_x, F_y} > 0.3, \sum f_x(\rho_{F_x, F_y} < 0) \geq 12 \text{ High intensity, high financing interest} \quad (5)$$

After applying the hierarchy algorithm, the representation diagram from Figure 4 emerged:

Figure 4 shows that a number of items have a higher frequency in the agricultural cooperatives' options, allowing the prioritization of investment options, according to a cumulative scheme of frequencies in the correlation matrix.

The representation diagram has generated the variables from the first echelon of interest of Romania's agricultural cooperative's investments, according to the data from Figure 5.

By applying the frequency calculation methodology, a diagram on the maximum correlations of investment interest in the agricultural sector was obtained in Figure 5. This diagram shows that the options: covering the loan guarantees according to the share in the agricultural cooperative; co-financing from previously gathered funds; clear and certain intention to appeal to the Guarantee Fund; covering the loan guarantees by other means; not appealing to the Guarantee Fund due to supplementary costs, represent the main orientation directions in the investment field of the agricultural entities' management.

The results of the study confirm Romanian farmers' interest for financing collective investments realized by agricultural cooperatives, using a combination of equity/internal generated funds and banking loans, co-financing the investment from previously collected funds, providing credit collaterals with money from the Guarantee Fund and financing investment by other means than banking credit. The detailed aspects are approached in the Section 4.

	f29	f28	f27	f26	f25	f24	f23	f22	f21	f20	f19	f18	f17	f16	f15	f14	f13	f12	f11	f10	f9	f8	f7	f6	f5	f4	f3	f2	f1	
f1	1	1	1	1	1	1	1	1	1	0	1	1	1	0	1	1	1	0	1	0	0	0	0	0	1	1	0	0	0	
f2	0	1	0	0	1	0	0	1	0	0	0	0	0	0	1	1	1	0	0	0	0	0	0	0	1	0	1	0	0	0
f3	0	0	0	0	1	1	1	1	0	0	0	1	0	0	1	1	0	0	0	0	0	0	0	0	0	0	0	0	0	0
f4	0	1	0	1	1	0	1	1	0	1	0	1	0	0	1	1	1	0	0	0	0	0	0	0	0	0	0	0	0	0
f5	0	1	0	1	1	0	1	1	1	1	1	0	0	1	1	1	1	0	0	0	0	0	0	0	1	0	0	0	0	0
f6	0	1	0	1	1	0	0	1	1	1	1	0	0	0	1	1	1	0	1	0	0	0	0	0	0	0	0	0	0	0
f7	0	0	0	0	0	0	0	0	0	0	0	0	0	0	0	0	0	0	0	0	0	0	0	0	0	0	0	0	0	0
f8	0	0	0	0	0	0	0	0	0	0	0	0	0	0	0	0	0	0	0	0	0	0	0	0	0	0	0	0	0	0
f9	0	0	0	0	0	0	0	0	0	0	0	0	0	0	0	0	0	0	0	0	0	0	0	0	0	0	0	0	0	0
f10	0	0	0	0	0	0	0	0	0	0	0	0	0	0	0	0	0	0	0	0	0	0	0	0	0	0	0	0	0	0
f11	0	0	0	0	1	0	0	0	0	0	1	1	1	0	0	1	0	1	0	0	0	0	0	0	0	0	0	0	0	0
f12	1	0	0	0	1	1	1	0	1	0	1	0	0	1	0	1	0	1	0	0	0	0	0	0	0	0	0	0	0	0
f13	1	1	1	1	0	1	0	1	0	0	1	1	1	1	1	0	0	0	0	0	0	0	0	0	0	0	0	0	0	0
f14	0	0	0	0	0	0	1	1	0	0	1	0	1	1	1	0	0	0	0	0	0	0	0	0	0	0	0	0	0	0
f15	1	1	1	1	1	0	0	0	1	0	1	0	1	1	0	0	0	0	0	0	0	0	0	0	0	0	0	0	0	0
f16	0	1	0	0	1	1	1	1	1	1	0	0	1	0	0	0	0	0	0	0	0	0	0	0	0	0	0	0	0	0
f17	0	1	0	0	0	0	1	1	0	1	0	0	0	0	0	0	0	0	0	0	0	0	0	0	0	0	0	0	0	0
f18	0	0	0	1	0	0	1	1	0	0	1	0	0	0	0	0	0	0	0	0	0	0	0	0	0	0	0	0	0	0
f19	1	0	1	1	1	0	1	0	0	0	0	0	0	0	0	0	0	0	0	0	0	0	0	0	0	0	0	0	0	0
f20	1	1	1	1	0	0	1	0	1	0	0	0	0	0	0	0	0	0	0	0	0	0	0	0	0	0	0	0	0	0
f21	1	0	1	1	1	0	1	1	0	0	0	0	0	0	0	0	0	0	0	0	0	0	0	0	0	0	0	0	0	0
f22	1	1	1	1	0	0	1	1	0	0	0	0	0	0	0	0	0	0	0	0	0	0	0	0	0	0	0	0	0	0
f23	1	0	1	1	1	1	0	0	0	0	0	0	0	0	0	0	0	0	0	0	0	0	0	0	0	0	0	0	0	0
f24	1	0	0	0	1	0	0	0	0	0	0	0	0	0	0	0	0	0	0	0	0	0	0	0	0	0	0	0	0	0
f25	1	0	0	0	0	0	0	0	0	0	0	0	0	0	0	0	0	0	0	0	0	0	0	0	0	0	0	0	0	0
f26	1	1	0	0	0	0	0	0	0	0	0	0	0	0	0	0	0	0	0	0	0	0	0	0	0	0	0	0	0	0
f27	0	1	0	0	0	0	0	0	0	0	0	0	0	0	0	0	0	0	0	0	0	0	0	0	0	0	0	0	0	0
f28	0	0	0	0	0	0	0	0	0	0	0	0	0	0	0	0	0	0	0	0	0	0	0	0	0	0	0	0	0	0
f29	0	0	0	0	0	0	0	0	0	0	0	0	0	0	0	0	0	0	0	0	0	0	0	0	0	0	0	0	0	0

Figure 4. The diagram of variables representation in the panel type correlation structure. Source: Elaborated by the authors using Excel software.

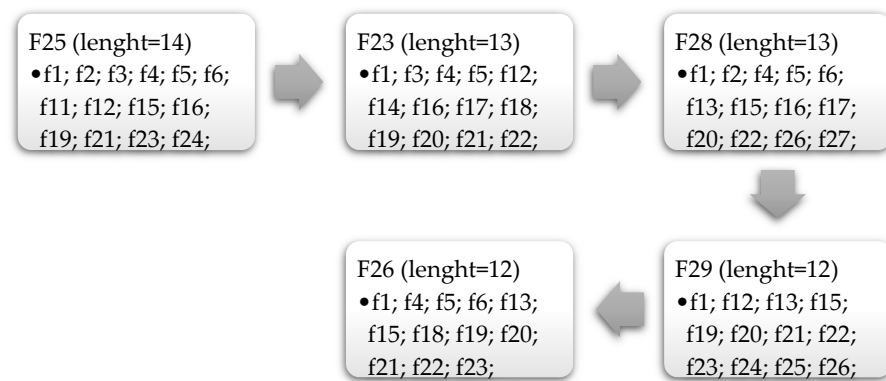


Figure 5. The diagram of maximum correlation points on interest sectors of agricultural investments. Source: Elaborated by the authors.

4. Results and Discussions

To demonstrate the H1 hypothesis (financing the agricultural cooperative by appealing to the Guarantee Fund is accepted by the producers only if the financing entails no supplementary costs and it is useful for developing the main activity sectors, ensuring technological development or developing the key sectors of warehousing/conditioning/processing/selling as the market registers deficits in these areas), we have conceived a neuronal model with a basis radial function with six testing units and 14 factors (f1; f2; f3; f4; f5; f6; f11; f12; f15; f16; f19; f21; f23; f24) in connection with the dependent variable (f25), using the statistical identification function and error testing with the sum of squares residuals (SSE = 34.113).

After running the model, the incorrect predictive percentage was of 29%, the estimated parameters being presented in the Table 3.

Table 3. Estimating the parameters with the neuronal method, covering the credit collaterals according to the existing share into the agricultural cooperative.

Predictor		Parameter Estimates							
		Predicted						Output Layer	
		Hidden Layer ^a							
H(1)	H(2)	H(3)	H(4)	H(5)	H(6)	[f25 = 1]	[f25 = 2]		
Input Layer 1 = NO 2 = YES	[f1 = 1]	0.750	0.652	1.000	0.977	0.677	0.774		
	[f1 = 2]	0.250	0.348	0.000	0.023	0.323	0.226		
	[f2 = 1]	0.500	1.000	0.739	0.955	0.161	0.790		
	[f2 = 2]	0.500	0.000	0.261	0.045	0.839	0.210		
	[f3 = 1]	0.917	0.826	0.913	0.977	0.484	0.919		
	[f3 = 2]	0.083	0.174	0.087	0.023	0.516	0.081		
	[f4 = 1]	0.722	0.739	1.000	0.068	0.581	0.774		
	[f4 = 2]	0.278	0.261	0.000	0.932	0.419	0.226		
	[f5 = 1]	0.889	1.000	0.913	0.977	0.935	0.919		
	[f5 = 2]	0.111	0.000	0.087	0.023	0.065	0.081		
	[f6 = 1]	0.917	1.000	0.739	0.773	0.710	0.790		
	[f6 = 2]	0.083	0.000	0.261	0.227	0.290	0.210		
	[f11 = 1]	0.222	0.261	1.000	0.386	0.065	0.500		
	[f11 = 2]	0.778	0.739	0.000	0.614	0.935	0.500		
	[f12 = 1]	0.778	0.957	0.696	0.750	0.774	0.855		
	[f12 = 2]	0.222	0.043	0.304	0.250	0.226	0.145		
	[f15 = 1]	0.556	0.348	1.000	0.795	0.645	0.758		
	[f15 = 2]	0.444	0.652	0.000	0.205	0.355	0.242		
	[f16 = 1]	0.806	1.000	0.870	0.659	0.323	0.726		
	[f16 = 2]	0.194	0.000	0.130	0.341	0.677	0.274		
	[f19 = 1]	1.000	1.000	1.000	1.000	1.000	0.129		
	[f19 = 2]	0.000	0.000	0.000	0.000	0.000	0.871		
	[f21 = 1]	0.194	0.043	0.000	0.068	0.097	1.000		
	[f21 = 2]	0.806	0.957	1.000	0.932	0.903	0.000		
[f23 = 1]	0.806	0.783	0.609	0.932	0.968	0.806			
[f23 = 2]	0.194	0.217	0.391	0.068	0.032	0.194			
[f24 = 1]	0.972	0.130	0.696	0.773	0.419	0.645			
[f24 = 2]	0.028	0.870	0.304	0.227	0.581	0.355			
Hidden Unit Width		0.921	0.761	0.752	0.792	0.962	0.945		
Hidden Layer	H(1)							−0.173	1.173
	H(2)							1.493	−0.493
	H(3)							1.057	−0.057
	H(4)							1.066	−0.066
	H(5)							1.003	−0.003
	H(6)							0.881	0.119

Source: Elaborated by the authors. ^a Displays the center vector for each hidden unit.

Table 3 reveals that the prediction variable covering the loan collaterals according to existing share into the agricultural cooperative is represented at the predictors level (14 factors) at 96.2% in prediction layer no. 5 and at 76.1% in the prediction layer no. 2, which favors the prediction of the variable in the higher than one variation of the NO category. The results of the neuronal model also show a 78.1% percentage associated to the variation layer no. 2 of YES, whilst 82.2% associated to the layer 1 of NO. The value of the correction is of 78.1%, according to Figure 6.

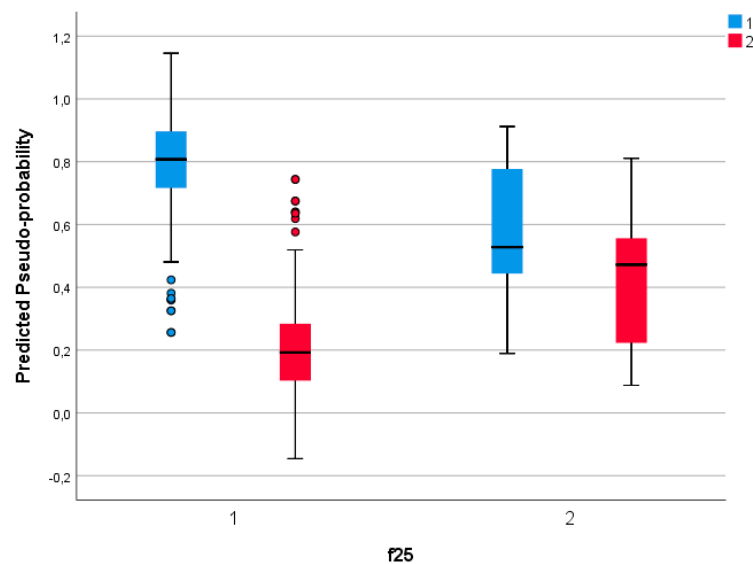


Figure 6. The representation diagram of pseudo-probable distributed variables for the two options (1 of NO, respectively, 2 of YES) of the f25 dependent variable. Source: Elaborated by the authors using SPSS software.

The sensitivity analysis of the function shows a favorable distribution of the financing decision by using guarantee funds, under the H1 hypothesis, according to Figure 7.

According to the sequential analysis method based on the Pearson correlations resulted that the size of the distribution gaps (lags) for the variable financing using the guarantee funds is the maximum of the analyzed financing possibilities, being net superior to the general sample inside the sample with declared financing pre-disposition, which confirms that the main challenge for the agricultural producers is the necessity of covering the support costs from the financing line, during the financing period. Thereby, the producers have to temporary provide financing from their own funds, which discourages access to financing and indirectly the agricultural production.

Superior correlations on the subsample favorable opinion for financing were registered for economic supported investments, the most representative of the entity, as well as in the warehousing/conditioning/processing/selling sectors, considering the growing experience accumulated by the producers in the market in each year.

To demonstrate the H2 hypothesis (financing the agricultural cooperative by appealing to the Guarantee Fund is accepted by the producers in view of minimizing the personal guarantees, allocating the funds only to the base activity or to the warehousing/conditioning/processing/selling sectors, following the investment priorities toward technologization and development to enhance social equity inside the cooperative), we have conceived a neuronal model with a basis radial function with six testing units and 12 factors (f1; f12; f13; f15; f19; f20; f21; f22; f23; f24; f25; f26) in connection with the dependent variable (f29), using the statistical identification function and error testing with the sum of squares residuals (SSE=13.825). After running the model, the incorrect predictive percentage was of 24.7%, the estimated parameters being presented in the Table 4.

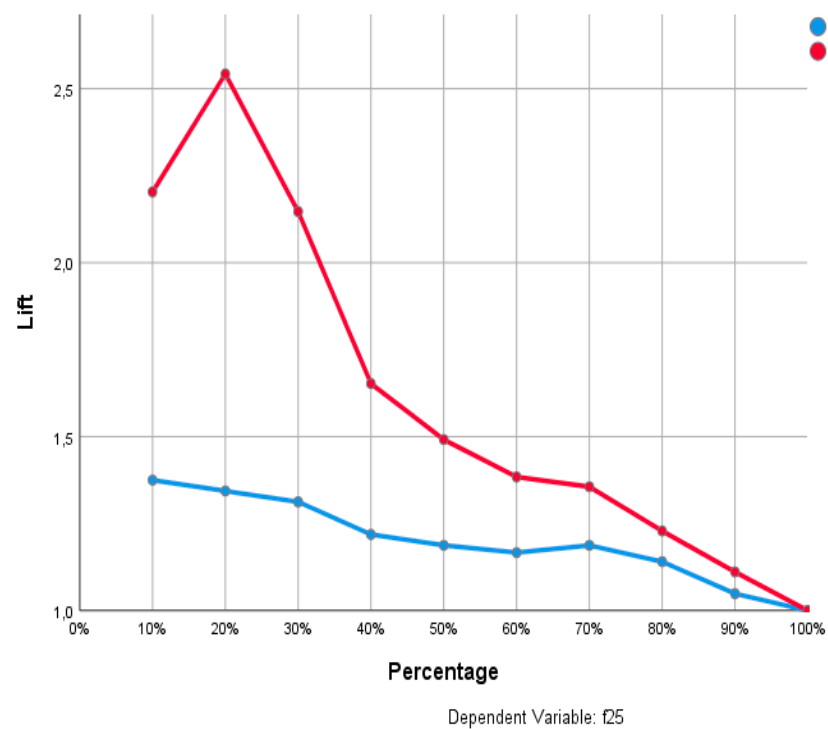
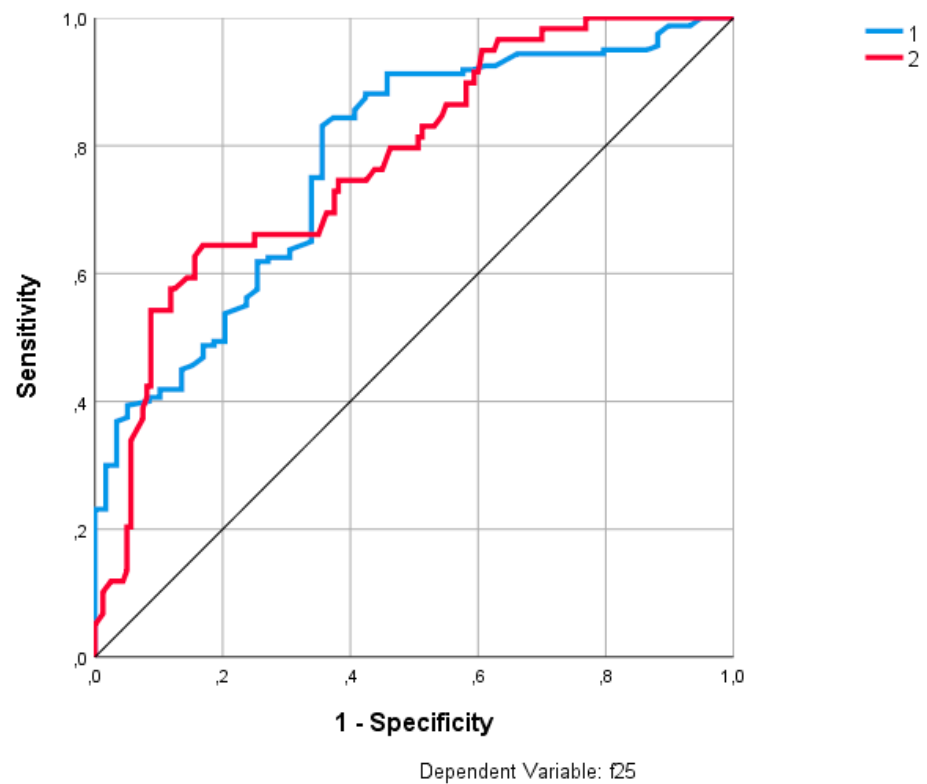


Figure 7. The sensitivity analysis of the options declared by the 219 polled agricultural entities using the structured questionnaire administered for the f25 dependent variable. Source: Elaborated by the authors using SPSS software v.25.

Table 4. Estimating the parameters with the neuronal method for not appealing to Guarantees Fund because of supplementary costs.

Predictor		Parameter Estimates								
		Predicted						Output Layer		
		Hidden Layer ^a								
		H(1)	H(2)	H(3)	H(4)	H(5)	H(6)	[f29 = 1]	[f29 = 2]	
Input Layer 1 = NO 2 = YES	[f1 = 1]	0.727	0.722	0.737	0.857	0.765	1.000			
	[f1 = 2]	0.273	0.278	0.263	0.143	0.235	0.000			
	[f12 = 1]	0.879	0.889	0.737	0.929	0.676	0.889			
	[f12 = 2]	0.121	0.111	0.263	0.071	0.324	0.111			
	[f13 = 1]	0.970	0.944	1.000	0.929	0.971	0.963			
	[f13 = 2]	0.030	0.056	0.000	0.071	0.029	0.037			
	[f15 = 1]	0.727	0.722	0.895	0.500	0.588	0.704			
	[f15 = 2]	0.273	0.278	0.105	0.500	0.412	0.296			
	[f19 = 1]	1.000	0.000	0.000	1.000	1.000	1.000			
	[f19 = 2]	0.000	1.000	1.000	0.000	0.000	0.000			
	[f20 = 1]	1.000	1.000	1.000	0.000	1.000	1.000			
	[f20 = 2]	0.000	0.000	0.000	1.000	0.000	0.000			
	[f21 = 1]	0.000	1.000	1.000	1.000	0.000	0.000			
	[f21 = 2]	1.000	0.000	0.000	0.000	1.000	1.000			
	[f22 = 1]	0.091	0.333	0.000	0.571	0.382	0.000			
	[f22 = 2]	0.909	0.667	1.000	0.429	0.618	1.000			
	[f23 = 1]	0.970	0.667	1.000	0.929	0.647	1.000			
	[f23 = 2]	0.030	0.333	0.000	0.071	0.353	0.000			
	[f24 = 1]	0.000	1.000	0.421	0.714	1.000	1.000			
	[f24 = 2]	1.000	0.000	0.579	0.286	0.000	0.000			
	[f25 = 1]	1.000	1.000	0.579	0.714	0.118	1.000			
	[f25 = 2]	0.000	0.000	0.421	0.286	0.882	0.000			
	[f26 = 1]	1.000	0.000	1.000	0.571	0.882	0.000			
	[f26 = 2]	0.000	1.000	0.000	0.429	0.118	1.000			
	Hidden Unit Width		0.568	0.706	0.696	0.857	0.819	0.414		
	Hidden Layer	H(1)							0.892	0.108
H(2)								0.285	0.715	
H(3)								0.651	0.349	
H(4)								0.799	0.201	
H(5)								0.646	0.354	
H(6)								0.874	0.126	

Source: Elaborated by the authors. ^a Displays the center vector for each hidden unit.

Table 4 reveals that the prediction variable not appealing to Guarantee Fund because of supplementary costs is represented at predictors' level (14 factors) at 85.7% on the fourth prediction layer and at 41.4% on sixth prediction layer, which favors the location of the variable in the NO floor with a lower than one variation. The results of the neuronal model show a 12.4% percentage for the variation layer of 2—YES and 87.6% percentage for the 1—NO layer. The value of the correction is of 78.1%, according to Figure 8.

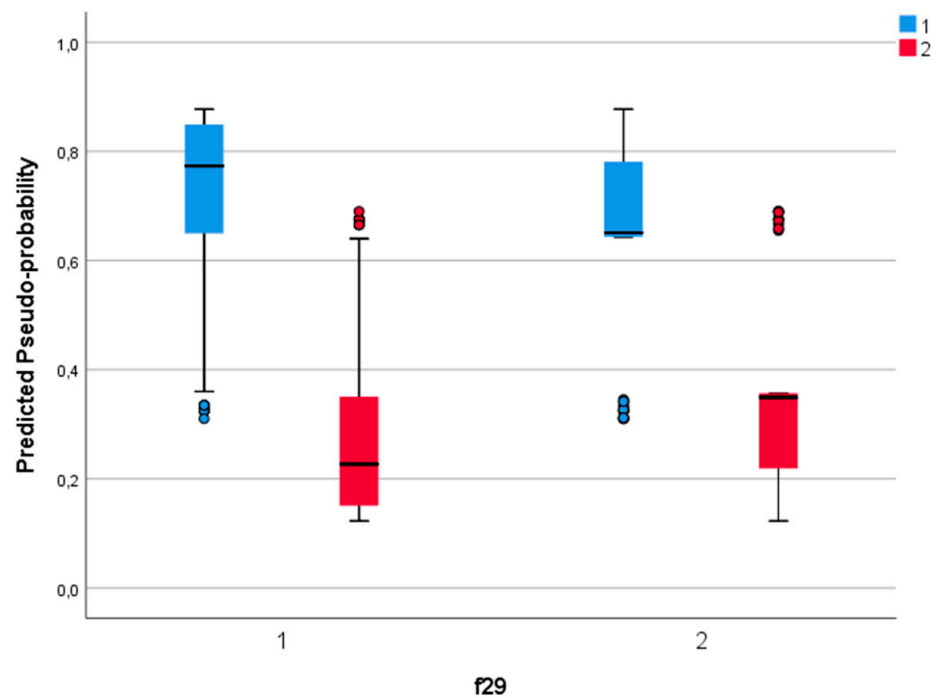


Figure 8. The representation diagram of pseudo-probable distributed variables for the two options (1 of NO, respectively, 2 of YES) of the f29 dependent variable. Source: Elaborated by the authors using SPSS software.

The sensitivity analysis shows a favorable distribution of the financing decision by appealing to guarantee funds under the H2 hypothesis, according to Figure 9 from.

According to the sequential analysis method based on the Pearson correlations, the size of the distribution gaps (lags) for the variable financing using the guarantee funds is a priority, resulting a declared predisposition on financing of the deciding entities in relation to the general sample. This confirms that minimizing the personal collaterals can be quintessential in the context of the growing financial and fiscal pressures, as otherwise the producers have to temporarily provide financing from their own funds, which discourages the access to financing and indirectly the agricultural production.

From the lag distribution perspective, superior correlations on the subsample favorable opinion for financing were registered for economic supported investments, the most representative of the entity, as well as in the warehousing/conditioning/processing/selling sectors, considering the growing experience accumulated by the producers in the market in each year.

This proves the H2 hypothesis.

To demonstrate the H3 hypothesis (in the absence of the access to the Guarantee Fund or after it was spent, the easiest financing solution is covering the guarantee by other means, aspect which covers basic economic needs of the cooperative and ensures the efficient use of the loan, correlated with co-financing from already collected funds), we have conceived a neuronal model with a basis radial function with six testing units and 12 factors (f1; f4; f5; f6; f13; f15; f18; f19; f20; f21; f22; f23) in connection with the dependent variable (f26), using the statistical identification function and error testing with the sum of squares residuals (SSE=16.521). After running the model, the incorrect predictive percentage was of 32%, the estimated parameters being presented in the Table 5.

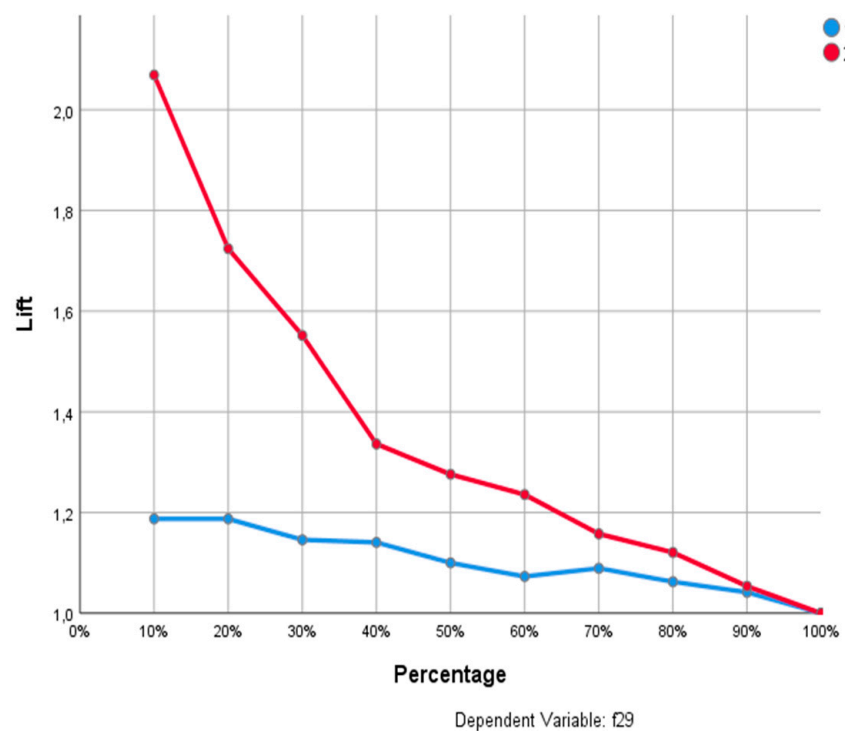
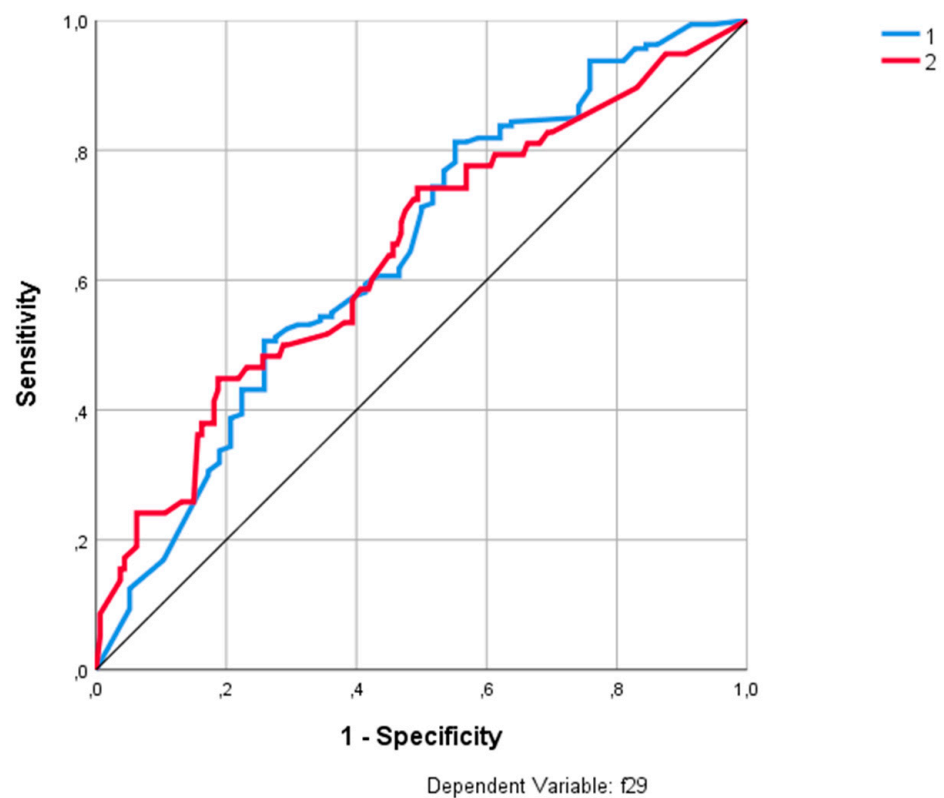


Figure 9. The sensitivity analysis of the options declared by the 219 polled agricultural entities using the structured questionnaire administered for the f29 dependent variable (1—NO, 2—YES). Source: Elaborated by the authors using SPSS software v.25.

Table 5. Estimating the parameters with the neuronal method for covering the loan collaterals by other solutions.

Predictor		Parameter Estimates							
		Predicted						Output Layer	
		Hidden Layer ^a							
		H(1)	H(2)	H(3)	H(4)	H(5)	H(6)	[f26 = 1]	[f26 = 2]
Input Layer 1 = NO 2 = YES	[f1 = 1]	0.714	0.710	0.977	0.781	0.625	0.857		
	[f1 = 2]	0.286	0.290	0.023	0.219	0.375	0.143		
	[f4 = 1]	0.857	0.387	0.614	0.844	0.875	0.643		
	[f4 = 2]	0.143	0.613	0.386	0.156	0.125	0.357		
	[f5 = 1]	0.857	0.903	1.000	0.969	1.000	0.929		
	[f5 = 2]	0.143	0.097	0.000	0.031	0.000	0.071		
	[f6 = 1]	0.714	0.935	0.795	0.781	0.750	0.643		
	[f6 = 2]	0.286	0.065	0.205	0.219	0.250	0.357		
	[f13 = 1]	0.929	0.871	0.977	0.969	0.875	0.929		
	[f13 = 2]	0.071	0.129	0.023	0.031	0.125	0.071		
	[f15 = 1]	0.714	0.129	0.977	0.750	0.875	0.643		
	[f15 = 2]	0.286	0.871	0.023	0.250	0.125	0.357		
	[f18 = 1]	0.714	0.419	0.477	0.563	0.500	0.571		
	[f18 = 2]	0.286	0.581	0.523	0.438	0.500	0.429		
	[f19 = 1]	1.000	1.000	1.000	0.000	0.000	1.000		
	[f19 = 2]	0.000	0.000	0.000	1.000	1.000	0.000		
	[f20 = 1]	1.000	1.000	1.000	1.000	1.000	0.000		
	[f20 = 2]	0.000	0.000	0.000	0.000	0.000	1.000		
	[f21 = 1]	0.000	0.000	0.000	1.000	1.000	1.000		
	[f21 = 2]	1.000	1.000	1.000	0.000	0.000	0.000		
[f22 = 1]	1.000	0.032	0.000	0.000	1.000	0.286			
[f22 = 2]	0.000	0.968	1.000	1.000	0.000	0.714			
[f23 = 1]	0.071	1.000	1.000	1.000	0.000	1.000			
[f23 = 2]	0.929	0.000	0.000	0.000	1.000	0.000			
Hidden Unit Width		0.773	0.738	0.598	0.696	0.707	0.835		
Hidden Layer	H(1)							0.827	0.173
	H(2)							0.861	0.139
	H(3)							0.349	0.651
	H(4)							0.637	0.363
	H(5)							0.204	0.796
	H(6)							0.587	0.413

Source: Elaborated by the authors. ^a Displays the center vector for each hidden unit.

Table 5 reveals that the prediction variable covering loan collaterals by other solutions is represented at predictors' level (14 factors) at 83.5% on the sixth prediction layer and at 69.6% on the third prediction layer, which favors the location of the variable in the NO floor with a lower than one variation. The results of the neuronal model show a 21.7% percentage for the variation layer of 2—YES and 78.3% percentage for the 1—NO layer. The value of the correction is of 63.6%, according to Figure 10.

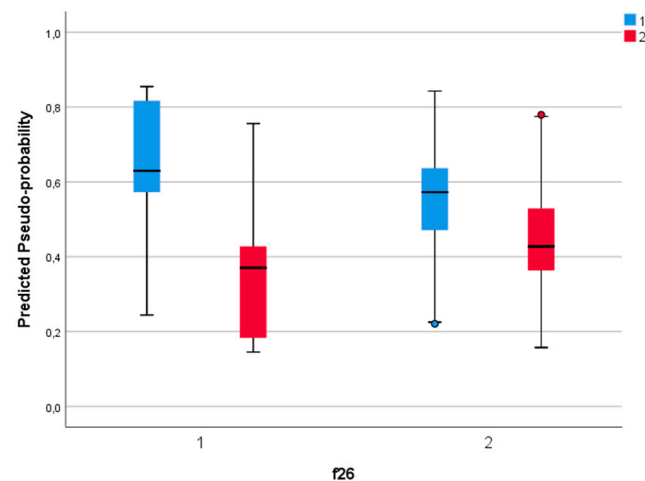


Figure 10. The representation diagram of pseudo-probable distributed variables for the two options (1 of NO, respectively, 2 of YES) of the f26 dependent variable. Source: Elaborated by the authors using SPSS software v.25.

The sensitivity analysis shows a favorable distribution of the financing decision by appealing to financing by other means under the H3 hypothesis, according to Figure 11.

According to the sequential analysis method based on the Pearson correlations the size of the distribution gaps (lags) for the variable financing using attracted funds—loans has a principal representation on the base economic segment of the entity, following the cover of supplementary need for guarantees after the exhaustion of the guarantee fund.

The distribution is realized in relation to the base economic sector, respectively; its technologization at the same time shows the vulnerabilities resulting from non-applying due to lack of equity and capital.

The solutions proposed for reaching the objective of the program are presented in Figure 12.

At the European level, the strategic Common Agricultural Policy (CAP) Plans approach agriculture in an efficient manner, based on 10 objectives, which are individually developed, according to EU agricultural entities' specific needs. From the strategic plans we can mention the orientation towards sustainable development, protecting the environment, social protection, sustainability of the agriculture and agri-food sectors, ensuring food security and safety, using innovation and digitalization and encouraging the exchange of information within the common agricultural policy.

In the economic field, the support offered to farmers refers to ensuring the functionality of the producing enterprises in the context of the challenges regarding food security, which requires supporting local production to ensure quality food at accessible prices, at the expense of products originating from countries which do not observe the same quality and environmental standards and pollute much more than the local products coming from short supply chains. In the authors' opinion, the subsidy represents short-term aid elements to compensate for the losses and continue the production activity, after natural calamities or crisis situations; the viable long-term solution is represented by the prioritization of investments of the producers' association forms with economic roles. European agriculture has met many transformations in the last 7 years, due to crises and differences in the approach of cultivation of genetically improved plants, their import and use for animal and human consumption and the corresponding objectives assumed by the European bodies.

Predictability is currently affected by exogenous events (the economic, geopolitical, pedoclimatic, sanitary and war induced crises, conditions imposed on European Union farmers and their products, such as halving of pesticides' use in agriculture, although non-EU imports do not comply with the same requirements).

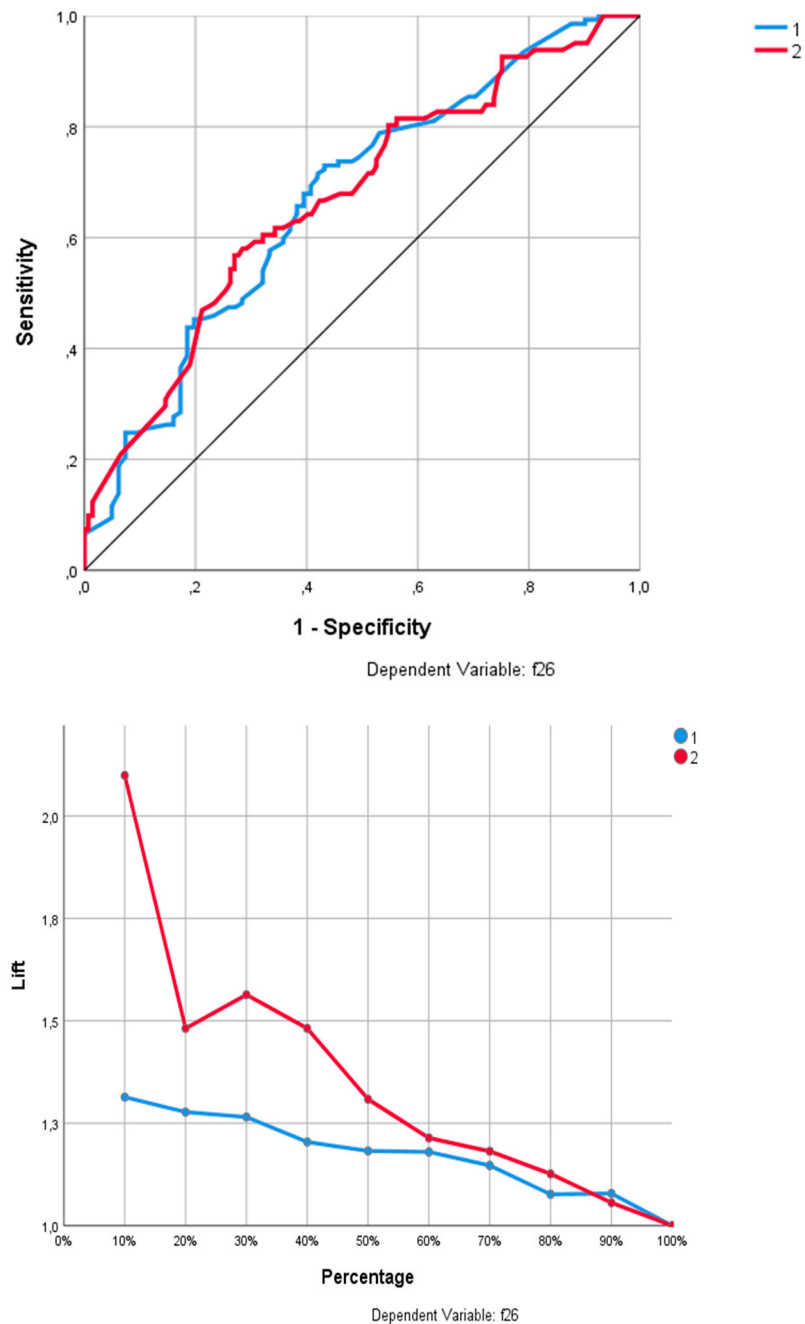


Figure 11. The sensitivity analysis of the options declared by the 219 polled agricultural entities using the structured questionnaire administered for the f26 dependent variable (1—NO, 2—YES). Source: Elaborated by the authors using SPSS software v.25.

Romania is confronted with a dependence of agricultural production on weather conditions, which leads to high fluctuations in revenues from one year to another [31]. The impact of unfavorable phenomena, either climatic, represented by pedological drought, extreme heat waves or soil erosion or ones caused by pests, leads in many instances to stopping the activities or insolvency for some farmers, as there is not yet in place a National System of Integrated Management and Control of Agricultural Catastrophic Risks.

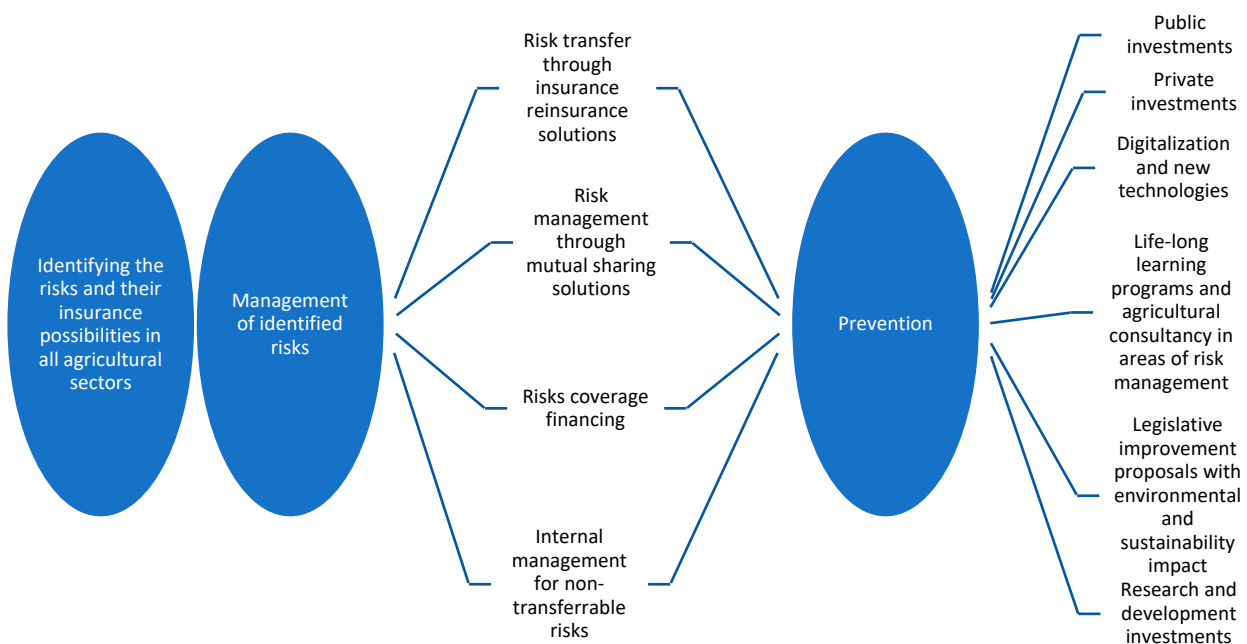


Figure 12. The solutions of the National Program for Catastrophic Risks Management in Agriculture. Source: Elaborated by the authors.

In the general context of increasing the impact of climate and environmental changes, of the socio-economic and political changes, of pest and disease proliferation and in the specific Romanian context and of including the food and agricultural sector as a strategic component, the system is based upon the development and implementation of some complementary risk management instruments, such as assuming and creating the National Program of Agriculture Catastrophic Risks Management, the introduction of an integrated national scheme of insurance–reinsurance in agriculture to cover predefined risks, support for optional insurance schemes, supporting financial stability instruments including independent mutual funds and support for using financial instrument to prevent and mitigate risks.

Finally, this can enhance the risk management, improve transparency and increase competitiveness of agricultural companies, making full use of digitalization promoted through the National Program of Recovery and Resilience. It is important to realize a European and national strategy for the creation and maintenance of protective forest curtains, to create a favorable microclimate for agricultural production, which should be interconnected with the ones from neighboring countries, and to limit or stop the climate changes' negative effects [32,33].

At the same time, the agricultural policies promoted by EU, even if they promote sustainability and durability, at least in the short term lower the competitiveness of European agriculture and indirectly encourage the cheap imports of agricultural and food products that do not comply with same quality rules and criteria as the EU produced ones.

It seems essential to update the legal framework to permit the use of modern amelioration techniques and allow modern science to make an objective analysis, granting decision making ability for the European Authority for Food Safety (EFSA) to reduce the use of pesticides and fertilizers, inclusively for the countries which have consumptions well below the European average. At the same time, the imports of non-conformant agricultural products and fertilizers, low quality and replacements of meat, milk and vegetables, which are falsely labeled using deceiving marketing practices, should be prohibited.

Simultaneously, of utmost importance is speeding up the civil works of the National Program of Irrigation and Drainages and attracting funding through the National Program of Recovery and Resilience, as well as attracting European funds to gradually increase

the irrigated areas in Romania to about 3 million hectares in 2035. Attaining this objective will allow Romania to become the main producer of soy and soy derivatives from the EU so that the internal EU consumption is secured and phases out the 85% imports from the total vegetable protein necessary to secure the feeding sources for the European zootechnical sector.

On the basis of Figure 12, a balanced scoreboard of viable solutions for Romanian agriculture development in accordance with the needs generated by the current unfavorable context was realized, as in Table 6 below.

Table 6. Balanced scorecard of solutions for Romanian agriculture development.

(f0) Applying for Grants		
Financing types S1–S6	Exclusively self-financing (f19): 24.7%	
	S1: Creating a national framework for good practices for active agricultural cooperatives	Each member contributes according to his/her share into the Cooperative (f22): 77.2% S1–S2
	S2: Implementing integrated risk and control management instruments	
	S3: Facilitating the access to irrigation and draining systems	Collected funds (23): 16.9% S3–S4
	S4: Optional insurances of the agricultural activities/revenues	
	Bank Loans (20): 10%	All members agree upon (24): 35.6% S5
Guarantee fund S7–S11	S5: Access to diversified financial products, specific to agricultural cooperatives and easy access (such as mobile banking)	Only the members and shareholders of the cooperative (25): 26.9% S5
	S6: Contribution according to the shares held within the cooperative and/or the size of each member exploitation	Another solution required (26): 37.4% S6
	Mixt (21): 65.3% S1–S6	
	Dependent upon the level of costs (27): 54.8%	
	S7: Solutions for cost reductions and accessing the risk management instruments in agriculture	
	S8: Granting preferential guarantees for investments of strategically important national and regional agricultural cooperatives for warehousing/conditioning/processing/selling of agricultural products of cooperative members	
	Reducing the weight of collaterals (28): 18.7%	
	S9: Reducing the weight of collaterals compared to the value mentioned in the projects for agricultural cooperatives	
	Direct provision of collaterals by the cooperatives and/or their members (29): 26.5%	
	S10: Setting a special fund at cooperative level to ensure the money needed for investments or financing cost and fees related to financing the investment by banking loans	
Purpose of funding S12–S13	S11: Requiring a letter of guarantee from a single or a group of members	Common machinery (11): 60.3%
	Machinery (1): 19.1%	Specific machinery (12): 19.6%
	S12: Ensuring the optimal use of transport and harvesting/treatment machinery in relation to the activity size of all members to ensure quality and timely activities	Machinery for greenhouses (13): 5%
		Machinery for zootechnic activities (14): 27.9%
	Warehousing/conditioning/processing (2): 29.7%	Warehousing (15): 30.1%
	S13: Investments to increase the value added of primary production of the members	Primary processing (16): 28.8%
		Processing of finished products (17): 42.9%
		Local development (18): 48.9%
		Technologization (3): 14.2%—S12
		Processing (4): 38.4%—S13
	Horticulture (5): 6.4%—S12–S13	
	Zootechnics (6): 18.7%—S12–S13	

Source: Elaborated by the authors.

Romania needs to plan and implement an ambitious agricultural strategy to become the biggest soy producer in Europe. The European Union is a big importer of protein crops, of which 70% are soy and soy derivatives. The Romanian agricultural potential is very big, and it can hold supremacy in Europe for soy production and ensure the vegetal protein for

the entirety of Europe. The EU's high demand of soy and soybean products is a guarantee that this objective can help level the Romanian trade balance.

5. Conclusions

The current research showed that the lack of national policies and strategies in the field of natural disasters and climate changes' risk management (Figure 12) are the main sources of vulnerabilities for Romanian agriculture producers in the current context, amplified by a low technology level, low resources for research and agricultural development and limited access to mobile banking services and to diversified financial products (Table 6).

Also, the poor infrastructure of the supply chain represents a barrier for the economic growth of agricultural entities, hindering the sustainable economic performance of these units.

The research showed that the financing needs of agricultural cooperatives are scarcely represented at stakeholders' interest level, the macroeconomic impediments hindering their preferential or easier access to financing.

The research extracted valuable information from the poll of the 219 Romanian agricultural cooperatives, identifying the development opportunities and limiting the vulnerabilities faced by the Romanian agricultural cooperatives. The authors of this study have realized a panel of discussions, which generated a series of solutions for increasing efficiency, improving the level of economic and financial measures and helping the Romanian farmers to become significant actors, with negotiation power in the European single market, in accordance with the current global and regional trends.

The Romanian agricultural cooperatives have experienced a significant growth starting with 2019, inclusively as a result of active implication of the Sector Union of Vegetal Cooperatives, yet this should be accompanied by investments to support the increase in value added, the creation of a national level union of cooperatives for each sector, mandated to negotiate supply of inputs, integrate strategic investments at regional and national level and trading the products at fair prices for farmers and accessible for consumers.

The study demonstrated the proposed objectives of the research in the sense of identifying the vulnerabilities of farmers and agricultural cooperatives in Romania by referring to the current situation presented in the research. Investment directions were identified, and the econometric model was created to optimize access to financing for Romanian agricultural cooperatives. Within the model, three working hypotheses were elaborated, tested and validated according to which: financing using the guarantee funds is the maximum of the analyzed financing possibilities (H1); financing using the guarantee funds is a priority, resulting in a declared predisposition on financing of the deciding entities in relation to the general sample (H2); in the absence of the access to the Guarantee Fund or after it was spent, the easiest financing solution is covering the guarantee by other means, aspect which covers basic economic needs of the cooperative and ensures the efficient use of the loan, correlated with co-financing from already collected funds (H3).

The economic model of optimizing the financing is a novelty brought about by this study, which analyzed the financing decision via the three working hypotheses, from both the financing sources and the final goals' perspectives. An important aspect revealed is that the lack of proper warehousing/processing facilities represent the main vulnerability, which impede achieving maximum efficiency of the primary production.

Other lagging chapters are the production integration chain to obtain high value-added products and the current low market share of agricultural cooperatives for the main food items, which all require targeted investments at regional and national levels and increase the economic exchanges between the cooperatives.

Based on the above topic, the main public policies proposed through this study are: updating the legal framework to facilitate access to innovation; technologies and modern science throughout the European Union; compliance with the manufacturers' instructions on the labels regarding the use of pesticides; the application of the technologies regarding the improvement of the resistance of plant species to drought, to the attack of pests or

diseases, under the conditions of maintaining the biological characteristics and the quality imposed at the European level; the adoption of integrated and flexible instruments for risk management in agriculture adapted to the specific needs of each state of the European Union; establishing a framework of good practices for European agricultural enterprises and measures to develop sustainable and sustainable agricultural cooperatives.

The authors have not identified any other similar studies in the specialized literature from Romania, aimed at reducing the risks that threaten the smooth running of the activity of agricultural cooperatives by means of an integrated financing model. Previous studies show the need for financing and some vulnerabilities regarding the absorption of European funds, or the maintenance of cohesion between members of associative forms [2,30,33].

As future research directions, the authors propose extrapolating the study to the European Union level but weighted by a series of variables that reflect the level of development of agricultural cooperatives in each state and its influence on investment options and directions.

Author Contributions: Conceptualization, M.L.Z., A.M.F. and V.M.A.; Data curation, A.M.F., F.B., M.S.D. and S.S.; Formal Analysis, M.L.Z., C.F. and V.M.A.; Investigation, A.M.F., F.B., M.S.D. and S.S.; Methodology, M.L.Z., A.M.F., C.F. and V.M.A.; Project Administration, M.S.D. and S.S.; Resources, A.M.F., S.S. and F.B.; Visualization, F.B., M.S.D. and S.S.; Supervision, M.S.D., C.F. and V.M.A.; Writing—original draft, M.L.Z., A.M.F., F.B., C.F. and V.M.A.; writing—review and editing, A.M.F., F.B. and M.S.D. All authors have read and agreed to the published version of the manuscript.

Funding: This research received no external funding.

Institutional Review Board Statement: Not applicable.

Informed Consent Statement: Not applicable.

Data Availability Statement: Not applicable.

Conflicts of Interest: The authors declare no conflict of interest.

References

1. OECD/FAO. *Building Resilience to Natural Hazard-Induced Disasters Insights from Country Case Studies*; OECD/FAO: Paris, France; Rome, Italy, 2021; ISBN 978-92-64-75278-8.
2. *Ministerul Agriculturii și Dezvoltării Rurale Strategia Pentru Dezvoltarea Sectorului Agroalimentar Pe Termen Mediu Și Lung Orizont 2020–2030*; Guvernul României: Bucharest, Romania, 2015; Volume 73.
3. Meuwissen, M.P.M.; Feindt, P.H.; Spiegel, A.; Termeer, C.J.A.M.; Mathijs, E.; de Mey, Y.; Finger, R.; Balmann, A.; Wauters, E.; Urquhart, J.; et al. A Framework to Assess the Resilience of Farming Systems. *Agric. Syst.* **2019**, *176*, 102656. [CrossRef]
4. OECD. *Strengthening Agricultural Resilience in the Face of Multiple Risks*; OECD: Paris, France, 2020; ISBN 978-92-64-33553-0.
5. Rolfe, J.; Akbar, D.; Rahman, A.; Rajapaksa, D. Can Cooperative Business Models Solve Horizontal and Vertical Coordination Challenges? A Case Study in the Australian Pineapple Industry. *J. Co Op. Organ. Manag.* **2022**, *10*, 100184. [CrossRef]
6. Akbar, D.; Rahman, A.; Rolfe, J.; Kinnear, S.; Schrobback, P.; Bhattarai, S.C.N. Models of Horizontal Collaboration in Agri-Food Export Supply Chain: The Case of Queensland’s Mango Industry. *Australas. J. Reg. Stud.* **2020**, *26*, 211–238.
7. Hooks, T.; McCarthy, O.; Power, C.; Macken-Walsh, Á. A Co-Operative Business Approach in a Values-Based Supply Chain: A Case Study of a Beef Co-Operative. *J. Co. Op. Organ. Manag.* **2017**, *5*, 65–72. [CrossRef]
8. The Economist Group. Global Food Security Index 2022. Available online: https://impact.economist.com/sustainability/project/food-security-index/reports/Economist_Impact_GFSI_2022_Global_Report_Sep_2022.pdf (accessed on 1 March 2022).
9. FAO. *The State of the World’s Biodiversity for Food and Agriculture*; Bélanger, J., Pilling, D., Eds.; FAO Commission on Genetic Resources for Food and Agriculture Assessments: Rome, Italy, 2019; ISBN 978-92-5-131270-4.
10. United Nations. Development Programme Poverty and Vulnerability Projections and Policy Responses. Available online: <https://www.undp.org/sites/g/files/zskgke326/files/2022-07/Addressing-the-cost-of-living-crisis-in-vulnerable-countries.pdf> (accessed on 3 January 2022).
11. Miller, T.; Kim, A.; Roberts, J.C.N. *2022 Index of Economic Freedom*, 1st ed.; The Heritage Foundation: Washington, DC, USA, 2022; ISBN 978-0-89195-307-4.
12. Lupoae, O.D.; Radu, R.I.; Muntean, M.-C. Capturing Entrepreneurial Opportunities in the Romanian Equine Sector: An Fs-Qca Approach. *Int. Entrep. Manag. J.* **2022**, *18*, 455–472. [CrossRef]
13. Oficiul National al Registrului Comertului. Company Statistics. Available online: <https://www.onrc.ro/index.php/ro/statistici> (accessed on 3 January 2022).

14. Sadowski, A.; Wojcieszak-Zbierska, M.M.; Beba, P. Territorial Differences in Agricultural Investments Co-Financed by the European Union in Poland. *Land Use Policy* **2021**, *100*, 104934. [[CrossRef](#)]
15. Paun, C.; Ivascu, C. The Impact of EU's Financial Support on the Agriculture's Development: A Panel Data Analysis. *Manag. Mark. Challenges Knowl. Soc.* **2021**, *16*, 86–100. [[CrossRef](#)]
16. Kiryluk-Dryjska, E.; Więckowska, B.; Sadowski, A. Spatial Determinants of Farmers' Interest in European Union's pro-Investment Programs in Poland. *PLoS ONE* **2021**, *16*, e0248059. [[CrossRef](#)] [[PubMed](#)]
17. Havemann, T.; Negra, C.; Werneck, F. Blended Finance for Agriculture: Exploring the Constraints and Possibilities of Combining Financial Instruments for Sustainable Transitions. *Agric. Hum. Values* **2020**, *37*, 1281–1292. [[CrossRef](#)] [[PubMed](#)]
18. Kehinde, A.; Adetiloye, K. Agricultural Financing in Nigeria: An Assessment of the Agricultural Credit Guarantee Scheme Fund (ACGSF) For Food Security in Nigeria (1978–2006). *J. Econ.* **2012**, *3*, 39–48. [[CrossRef](#)]
19. Zhang, D. The Innovation Research of Contract Farming Financing Mode under the Block Chain Technology. *J. Clean. Prod.* **2020**, *270*, 122194. [[CrossRef](#)]
20. Khanal, A.R.; Omobitan, O. Rural Finance, Capital Constrained Small Farms, and Financial Performance: Findings from a Primary Survey. *J. Agric. Appl. Econ.* **2020**, *52*, 288–307. [[CrossRef](#)]
21. Onyiriuba, L.; Okoro, E.U.O.; Ibe, G.I. Strategic Government Policies on Agricultural Financing in African Emerging Markets. *Agric. Financ. Rev.* **2020**, *80*, 563–588. [[CrossRef](#)]
22. Vo, P.; Ngo, T. The Role of Agricultural Financing and Development on Sustainability: Evidence from ASEAN Countries. *AgBioForum* **2021**, *23*, 22–31.
23. Oberholster, C.; Adendorff, C. Four Agricultural Financing Scenarios for Sub-Saharan Africa toward 2055: Conditions for Governmental Policy Interventions. *World Futur. Rev.* **2018**, *11*, 199–231. [[CrossRef](#)]
24. Pokharel, K.P.; Regmi, M.; Featherstone, A.M.; Archer, D.W. Examining the Financial Performance of Agricultural Cooperatives in the USA. *Agric. Financ. Rev.* **2019**, *79*, 271–282. [[CrossRef](#)]
25. Pokharel, K.P.; Archer, D.W.; Featherstone, A.M. The Impact of Size and Specialization on the Financial Performance of Agricultural Cooperatives. *J. Co. Op. Organ. Manag.* **2020**, *8*, 100108. [[CrossRef](#)]
26. Yen, M.-F.; Miranda, M.; Katchova, A. The Effects of Capital Constraints on the Growth of Agricultural Cooperatives. *Agric. Econ.* **2020**, *66*, 27–33. [[CrossRef](#)]
27. Grashuis, J.; Su, Y. A Review of the Empirical Literature on Farmer Cooperatives: Performance, Ownership and Governance, Finance, and Member Attitude. *Ann. Public Coop. Econ.* **2018**, *90*, 77–102. [[CrossRef](#)]
28. Marcis, J.; Bortoluzzi, S.C.; de Lima, E.P.; da Costa, S.E.G. Sustainability Performance Evaluation of Agricultural Cooperatives' Operations: A Systemic Review of the Literature. *Environ. Dev. Sustain.* **2019**, *21*, 1111–1126. [[CrossRef](#)]
29. Yi, Z.; Wang, Y.; Chen, Y.-J. Financing an Agricultural Supply Chain with a Capital-Constrained Smallholder Farmer in Developing Economies. *Prod. Oper. Manag.* **2021**, *30*, 2102–2121. [[CrossRef](#)]
30. UNCSV. *Agricultural Cooperatives in Romania—Current State and Objectives*; UNCSV: Bucharest, Romania, 2021; Volume 1.
31. Spiegel, A.; Slijper, T.; de Mey, Y.; Meuwissen, M.P.M.; Poortvliet, P.M.; Rommel, J.; Hansson, H.; Vigani, M.; Soriano, B.; Wauters, E.; et al. Resilience Capacities as Perceived by European Farmers. *Agric. Syst.* **2021**, *193*, 103224. [[CrossRef](#)]
32. FAO. *The State of Food Security and Nutrition in the World 2017. Building Resilience for Peace and Food Security*; FAO: Rome, Italy, 2017; ISBN 978-92-5-134325-8.
33. Florea, A.-M.; Bercu, F.; Radu, R.I.; Stanciu, S. A Fuzzy Set Qualitative Comparative Analysis (FsQCA) of the Agricultural Cooperatives from South East Region of Romania. *Sustainability* **2019**, *11*, 5927. [[CrossRef](#)]

Disclaimer/Publisher's Note: The statements, opinions and data contained in all publications are solely those of the individual author(s) and contributor(s) and not of MDPI and/or the editor(s). MDPI and/or the editor(s) disclaim responsibility for any injury to people or property resulting from any ideas, methods, instructions or products referred to in the content.