

Article

Dynamic Changes of the Ecological Footprint and Its Component Analysis Response to Land Use in Wuhan, China

Xiaowei Yao, Zhanqi Wang * and Hongwei Zhang

School of Public Administration, China University of Geosciences, Wuhan 430074, China; xiaowei Yao@cug.edu.cn (X.Y.); zhang735196722@hotmail.com (H.Z.)

* Correspondence: zhqwang@cug.edu.cn; Tel.: +86-27-6788-3088

Academic Editor: Vincenzo Torretta

Received: 9 January 2016; Accepted: 30 March 2016; Published: 5 April 2016

Abstract: Humans' demands for biological resources and energies have always been increasing, whereas evidence has shown that this demand is outpacing the regenerative and absorptive capacity of the planet. Since China is experiencing unprecedented urbanization and industrialization processes, how much impact this has imposed on the earth during economic development worldwide is conspicuous. Therefore, this paper tries to examine the environmental impact in detail and track its changes in a typical city of Central China, Wuhan, based on ecological footprint analysis. By calculating the ecological footprint and its components in terms of biologically productive land areas during the period of 1995–2008, it is found that the ecological footprint increased in fluctuations from 1.48 gha per capita to 2.10 gha per capita, with the carbon footprint contributing most within the whole time period. Compared to the tiny declining biocapacity of the region, a gradually aggravated ecological deficit in the city was observed, which increased from 1.12 gha per capita in 1995 to 1.79 gha per capita in 2008. Component analysis on the trends of the ecological footprint and ecological deficit reveals that the impact on the ecosystem induced by humans' demands for resource production and energy consumption became greater than before, and cutting down the consumption of fossil fuels could reduce the carbon footprint and the overall ecological deficit of the city.

Keywords: ecological footprint; ecological deficit; biocapacity; energy consumption; carbon footprint; biological resource; Wuhan

1. Introduction

It has been widely recognized that sustainable development with various species on the planet is the common pursuit of human beings. However, there is an increasing worldwide discussion about humans' sustainability due to the rising trend of greenhouse gas (GHG) emissions and the excessive consumption of natural resources. Even though the key impact factors are still under debate, academia across the world has come to an agreement that this situation is basically ascribed to anthropogenic disturbances with agriculture, urban development and energy production [1–4].

In order to provide indicators for sustainability on the environmental side, in other words, to measure the human environmental impact on the earth, several methods have been developed during the recent decades [5–7]. However, each approach has its strengths and weaknesses in application [8]. Among these, ecological footprint (EF) analysis is one of the most widely used approaches. It is a quantitative environmental accounting tool for estimating the requirements for resource consumption and waste assimilation by a certain number of populations. Instead of calculating what population a particular region can support sustainably, the ecological footprint indicator directly shows the areas of biologically productive land appropriated to sustain a defined population, which were described

as “footprints” that humans impose on the earth’s surface [9]. Therefore, it represents the impact of human consumption activities and waste assimilation requirements on the natural ecosystems, and moreover, is able to compare the consumption (footprint) with the amount of resources that nature can produce in the same time (biocapacity).

Due to its full picture of the sustainability concept of the planet and its global comparability, accessibility and operability, the ecological footprint model has been applied to various scales by many scholars and governments. At the global scale, today humanity uses the equivalent of 1.6 planets to provide the resources we use and absorb our waste, according to the research report of the Global Footprint Network [10]. Carbon has been the dominant component of humans’ ecological footprint for several decades, primarily caused by the burning of fossil fuels such as coal, oil and natural gas. It rose up to 53% of the total ecological footprint by 2010, while it was only 36% in 1961 and 45% in 2005 [10]. At national and sub-national scales, Wackernagel *et al.* have explored ecological footprint trends in Austria, the Philippines, and South Korea for the past 40 years [11]. Pereira *et al.* analyzed the ecological footprint in Brazil combined with energy synthesis [12]. Palacios-Agundez *et al.* provided a detailed assessment of ecosystem services supply and demand and analyzed the local service provisioning mismatch by using ecological footprint analysis [13]. Moore *et al.* calculated the residential consumption and ecological footprint of Metro Vancouver in 2006 by means of bottom-up ecological footprint analysis with the urban metabolism framework [14]. There are also footprint studies at smaller scales, for example on specific sectors and products, to identify local environmental impacts [15,16].

In order to assess the impact by a certain kind of resource consumption or waste generation associated with human activities across multiple dimensions, a series of footprint-style indicators including the carbon footprint, water footprint, energy footprint, biodiversity footprint, nitrogen footprint and chemical footprint, *et al.* have been widely proposed and analyzed [17–24]. In recent years, efforts have been made to build up a “footprint family” [25–27] as a combination set of ecological footprint, carbon footprint and water footprint indicators to evaluate the comprehensive impact of resource consumption and GHG emissions on the earth. However, some important issues are still quite controversial in the footprint combination, such as cross-scale measuring and weighting [28–30]. Currently, the concept of the ecological footprint created by Wackernagel has become very popular and the analysis model has a clear benchmark to compare the human consumption of resources and energies *versus* what nature offers to humans.

China has been experiencing very fast economic development in recent years, but its process of urbanization and industrialization is still far from completion. This implies that there has been considerable demand for various products (agricultures, energies, *etc.*) and services (waste assimilation, *etc.*) because it is one of the biggest developing countries in the world. As a consequence, how much impact China imposes on the earth’s system is what we need to examine first, so it can be compared with the biocapacity to reveal whether the environment has been overloaded or not. Moreover, how the impact has changed in accordance with time and space is another question that we need to explore, as it directly reflects the implementation effect of sustainability policy. These objectives are of profound guiding significance for future socio-economic development. Though there has been research on the footprint analysis of Chinese society [31,32], explorations are seldom reported at the sub-national scale of this huge developing country. This study therefore aims to explore the two questions above based on a case analysis at a regional scale. It takes a typical city, Wuhan, in central China to track the dynamic changes of the city’s demand for raw materials and energies in terms of corresponding, biologically productive land types, and furthermore, to identify the component changes within the footprint in terms of material productivity and energy consumption. It is greatly valuable for local governments to adjust industrial structures and implement more suitable land use policies for reducing pressures on the planet.

2. Study Area

This study was performed in Wuhan Municipality (113°41' E–115°05' E, 29°58' N–31°22' N), central China, which is the capital city of Hubei Province. It covers a total area of 8523 km² with a population of 10.33 million inhabitants (2014). Seated along the middle reaches of the Yangtze River, the city is located at the Yangtze Plain with only small hilly parts in the north and northeast. In addition, the Yangtze River's largest tributary, Hanjiang River, flows from the west and into the city's downtown, and tens of lakes interconnect within the region; the water bodies occupy nearly 20% of the metropolitan area.

Owing to a considerably abundant amount of water resources and good heat conditions, Wuhan and its surrounding areas used to be an important grain- and fishery-producing region. However, as China underwent a profound reform over recent decades, industrial and commercial sectors in Wuhan have also been tremendously strengthened since the 1990s. The proportions of these two sectors account for 47.5% and 49.0% of the total Gross Domestic Product (GDP) by the end of the year 2014, respectively, while the agricultural sector makes only 3.5% of the GDP, and is declining every year. Besides, with its advantageous location in the country and the vigorous development of its industries and commerce, Wuhan is now the central metropolis in inland China, and it plays an important role in the transportation exchange network, connecting the more developed regions in eastern China with the less developed regions in western China.

From the perspective of land use structure, nearly 59% of Wuhan's land area was covered by arable land in 2008, which is about 5000 km². It includes paddy fields and irrigated dry soils covering about 3200 km² and 1800 km², respectively. Water bodies as well as forests make up about 30% of the region in total. Built-up area occupies approximately 10%, comprising urban areas, rural settlements, separated industrial areas, roads and wharfs, and it is still sprawling fast by seizing arable land. Grazing land and unused land, the latter involving swamps and bare ground, are the two types that are difficult to see in the city: each type covers less than 1% of the area, respectively (Figure 1).

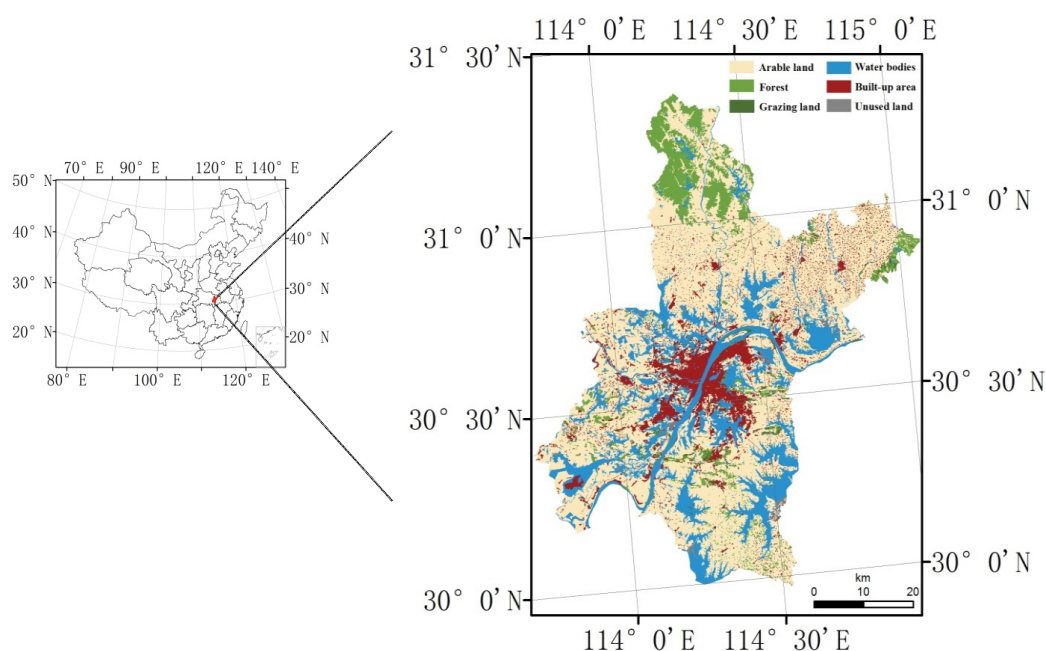


Figure 1. Location of the study area and land cover (2008).

3. Data and Methods

3.1. Assessing the Ecological Footprint and Biocapacity

In this study, we used the ecological footprint as an environmental accounting indicator to describe the impact on the earth of the inhabitants' activities in Wuhan. The impact is produced via resource utilization, waste generation and the use of services provided by the ecosystem. Therefore, the ecological footprint basically consists of two types of accounts: the biological resources account and the energy account.

The ecological footprint converts the anthropogenic impact into a biologically productive area, which means land that is able to perform photosynthesis and produce biomass. It is the basis for the unified measuring of various kinds of natural capitals. In other words, when calculating the ecological footprint accounts for a given region, all types of materials and energies consumption within the region are converted into the related biologically productive areas [33].

The six main categories of biologically productive land consist of arable land, grazing land, forest, water bodies, built-up area and carbon uptake land. Arable land is mainly for the provision of plant-based foods and some other plants such as fiber, *etc.* Grazing land basically produces animal products. Forests provide forest products and wood materials, even though there are quite few in the study area. Water bodies supply various kinds of aquatic products, including animals and plants. Built-up areas offer habitats for humankind, for instance manufacturing, entertainment and infrastructures. Different from these five existing land categories, carbon uptake land is a virtual land type. It presents the forest areas that need to absorb the carbon dioxide emissions induced by humans when utilizing resources and energies and producing waste.

For a defined region, each of the biologically productive land categories is described as an area in hectares, expressing the land needed to serve the production and consumption demands. Since the six land categories have different biological productivities, a common measurement unit is needed to unify the different land areas [5]. This unit converts the land areas to the biologically productive areas with world average productivity. In order to make the land areas be summed up and to ensure that these localized production and consumption metrics are globally comparable, the footprint model provides the equivalence factors (EQF) for each land type, by which they are multiplied to calculate the ecological footprint in global hectares (gha). The total amount of biologically productive areas is equal to the total ecological footprint:

$$EF(\text{gha}) = \sum \text{area}_i \times EQF_i = \sum \frac{C_i}{EP_i} \times EQF_i \quad (1)$$

where C_i is the amount of product i that is produced (or the carbon dioxide that is emitted) in the region; EP_i is the world average yield for product i (or the carbon uptake capacity in case C refers to carbon dioxide emissions); and EQF_i is the equivalence factor of each biologically productive land type producing product i .

Opposite to the ecological footprint referring to the demand for goods from nature, the biocapacity of a particular surface is defined as nature's ability to renew what people demand. It is therefore the ecosystem's capacity to produce useful biological materials that are consumed by humans and to absorb the waste materials generated by humans, under the current management schemes and technologies [9]. It is the sum of the productive areas of arable land, forest, grazing land, water bodies and built-up areas. To represent the productivity available to serve people's uses as a standardized measurement, the biocapacity of an area is calculated by multiplying the actual physical area by the yield factor (YF) and the appropriate equivalence factor (EQF), expressed in global hectares as the ecological footprint is. The function of the yield factor of a given land type is to compare the production

difference between a certain region with the world. The biocapacity of each land type is assessed according to the following formula:

$$BC \text{ (gha)} = \sum S_j \times EQF_j \times YF_j \quad (2)$$

where S_j is the biologically productive land area that is available for the production of each product j ; and YF_j is the yield factor for each type of land producing product j .

The difference between biocapacity and ecological footprint is called ecological reserve (when the biocapacity is greater than the ecological footprint) or ecological deficit (when the biocapacity is smaller than the ecological footprint). If the ecological footprint exceeds the biocapacity of a region, meaning there is an ecological deficit, it implies that a scale mismatch occurs locally and that the region is importing service demand through trade at larger scales. It should be noted that at least 12% of the overall capacity must be kept to maintain biodiversity, and only 88% of the physical area can be counted into the provisioning biocapacity for goods and services [34].

3.2. Data Sources and Handling

The accuracy of the ecological footprint highly depends on the quality of the source data [35]. As a result, the most complete and detailed data available about production and consumption activities in Wuhan were collected in this research. Data describing the annual amounts of biological resource production and energy consumption in Wuhan were derived from the Wuhan Statistical Yearbook during the study period. The biological resources involve plant food, live animals, forestry products and inland aquacultures. The main items produced in the study area cover dozens of goods on corresponding land areas (Table 1). The amount of energy consumption in Wuhan is basically grouped into crude coal, coke, crude oil, fuel oil, gasoline, diesel oil, kerosene, liquefied petroleum gas (LPG), hydroelectricity and fossil electricity, which are linked to the carbon footprint and built-up areas (Table 1). The global average productivity for biological products is primarily based on the datasets published by the Food and Agriculture Organization (FAO) of the United Nations. The ecological footprint per unit mass of energy calculated by Wackernagel [5] was applied in this work. As for the two important coefficients in this method, the equivalence factor and the yield factor were also quoted from his research [33], due to its wide scope and application (Table 2). The constant values of these two parameters were adopted mainly because: (a) the equivalence factor changed so slightly by year that it had little influence on the assessment [11]; and (b) there were still some production data unknown in forestry and poultry-farming in the study area due to official statistical data missing in China, whose ranges of production data of some biological resources were different from the FAO dataset. Other supplementary energy data, for instance calorific value factors of each type of energy source, were collected from the China Energy Statistical Yearbooks launched by the National Bureau of Statistics.

Additionally, to trace the evolution trends of the biocapacity of Wuhan within the study period, land use data at the scale of 1:100,000 at some typical time points (1995, 2000, 2005 and 2008) was applied. It was collected from the Chinese Academy of Sciences (CAS). It uses a classification system of six classes at the first level and 25 classes at the second level, which relied on interpretation of the Landsat TM imagery and ground survey of 2000 with a high level of accuracy (about 98.7% of the average degree of interpretation accuracy and 97.6% of comparing the changing patches of land use between two periods) [36].

Table 1. Biological products and energy sources in Wuhan related to the biologically productive land categories.

Land Categories	Items of Biological Products and Energy Sources in Wuhan	
Arable land	Plant foods	Paddy rice, wheat, corn, beans and peas, tuber crops, coarse cereals, rape seeds, peanuts, sesame, sugar, vegetables and melons
	Other products	cotton, fiber crops and tobacco
Forest	Forestry products	Timber, peaches, apples, citrus, pears, grapes, persimmons, Chinese chestnut and tea
Grazing land	Animal products	Cattles, sheep and goats, fowl, milk, eggs and honey
Water bodies	Fishery products	Fishes, shrimps, prawns & crabs, shellfish and others (plants)
Carbon uptake land (Carbon footprint)	crude coal, coke, crude oil, fuel oil, gasoline, diesel oil, kerosene and liquefied petroleum gas (LPG)	
Built-up area	Hydroelectricity and fossil electricity	

Table 2. Equivalence factors (EQF) and yield factors (YF) applied in the model.

	Arable Land	Forest	Grazing Land	Water Bodies	Carbon Uptake Land	Built-up Area
EQF	2.8	1.1	0.5	0.2	1.1	2.8
YF	1.66	0.91	0.19	1	0	1.66

Based on the idea of the ecological footprint proposed by Wackernagel and Rees [33], the calculation process is very similar to their original conceptions except for not taking the imports and exports into consideration. Instead of calculating the apparent consumption by adding imports to production and subtracting exports as Wackernagel did, our work simplified C_i in Formula (1) as the yields of biological resources and the consumption amounts of energy resources, respectively, within the city of Wuhan, which were based on the following considerations: any biological resource produced within the city demanded the local biologically productive land, even if it was exported outside of the city and consumed by the people there; likewise, any source of energies consumed by the inhabitants of the city would cause an impact on the local environment by emitting GHGs and pollutants, even if the sources were produced elsewhere. Another reason, indeed, is that there is an obvious lack of data covering the imports and exports of each product at the regional level in China.

By collecting the data of production and the world average yield of each product corresponding to a certain type of biologically productive land (energy consumption data corresponding to carbon uptake land and built-up area, respectively), the amounts of each demanded land areas were calculated by year according to Formula (1). The whole amount of the ecological footprint per year in the city was summed up by the six biologically productive land types. Within the study period, the regional biocapacity in the years of 1995, 2000, 2005 and 2008 was evaluated by the given Formula (2). Hence, we could measure the ecological reserve/deficit in these four years as well to examine the changes of the environmental impact of the city.

4. Results

4.1. Evolution of the Ecological Footprint and Its Components in Wuhan during 1995–2008

The ecological footprint accounts of Wuhan show a fluctuating, increasing trend, implying that the resource consumption in the city generally grew during the studied 14 years. As the population stably grew from 7.1 million in 1995 to 8.33 million in 2008, the ecological footprint per capita changed, keeping pace with the variations of the total amount. It increased from 1.48 gha per person to 2.10 gha per person, with only a slight decrease during 1997–2001 and 2006–2008, respectively

(Figure 2). The demand for biological resources and energy in Wuhan went down to its minimum at 1.36 gha/capita in 2001 and then increased quickly to its peak at 2.19 gha/capita in 2006.

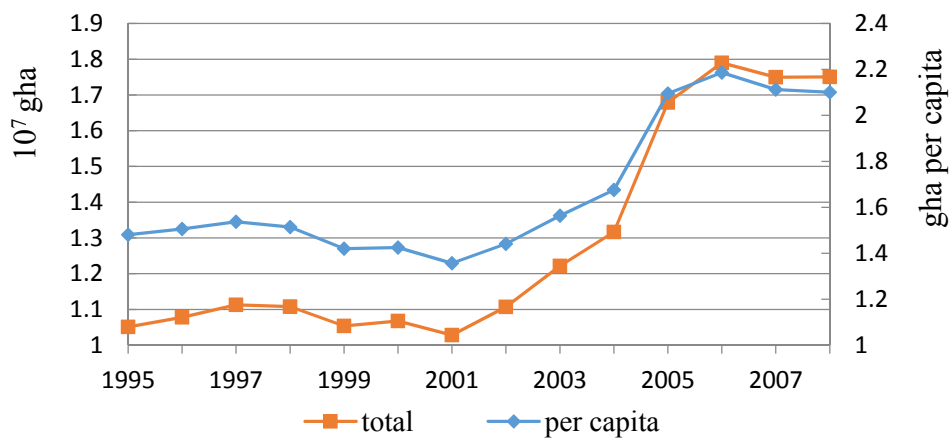


Figure 2. Ecological footprint changes over time (1995–2008).

To interpret the evolution trends of the resource production and energy consumption of Wuhan in detail, the footprint components disaggregated in terms of biologically productive land types were examined. Among the six land categories, footprints on grazing land, water bodies, built-up area and carbon uptake land kept rising in most years, while the footprints on arable land and forest went downward heavily sometimes during the period (Figure 3). It indicates that the production of plant foods and forestry products in this region may decrease but the quantity of animal products and energy consumption keep increasing.

The component analysis of biologically productive land types in the ecological footprint gives a more in-depth look on the trends of the requirements for goods and services from the local inhabitants. During the 14 years, the carbon footprint held the most dominant portion of the all demanded, biologically productive land areas from beginning to end (Figure 4). Its percentage accounted for, at minimum, 71.4% in 2001 and, at maximum, 81.2% in 2006, and it showed a significant growth during 2002–2006. The arable land footprint also played a significant role in the total ecological footprint account. Its proportion stayed at a relatively high level, which was between 22.5% and 24.5%, during 1995–2002, but decreased considerably to 20.9% in 2003. It only reached 14.8% in 2008 after a five-year decline. In other words, even though arable land was the second-largest productive area that people needed to produce biological resources, its percentage was getting smaller in the overall ecological footprint from the year of 2003. The following components are the grazing land footprint and built-up area footprint, which were greater than the impact on water bodies and forest (Figures 3 and 4).

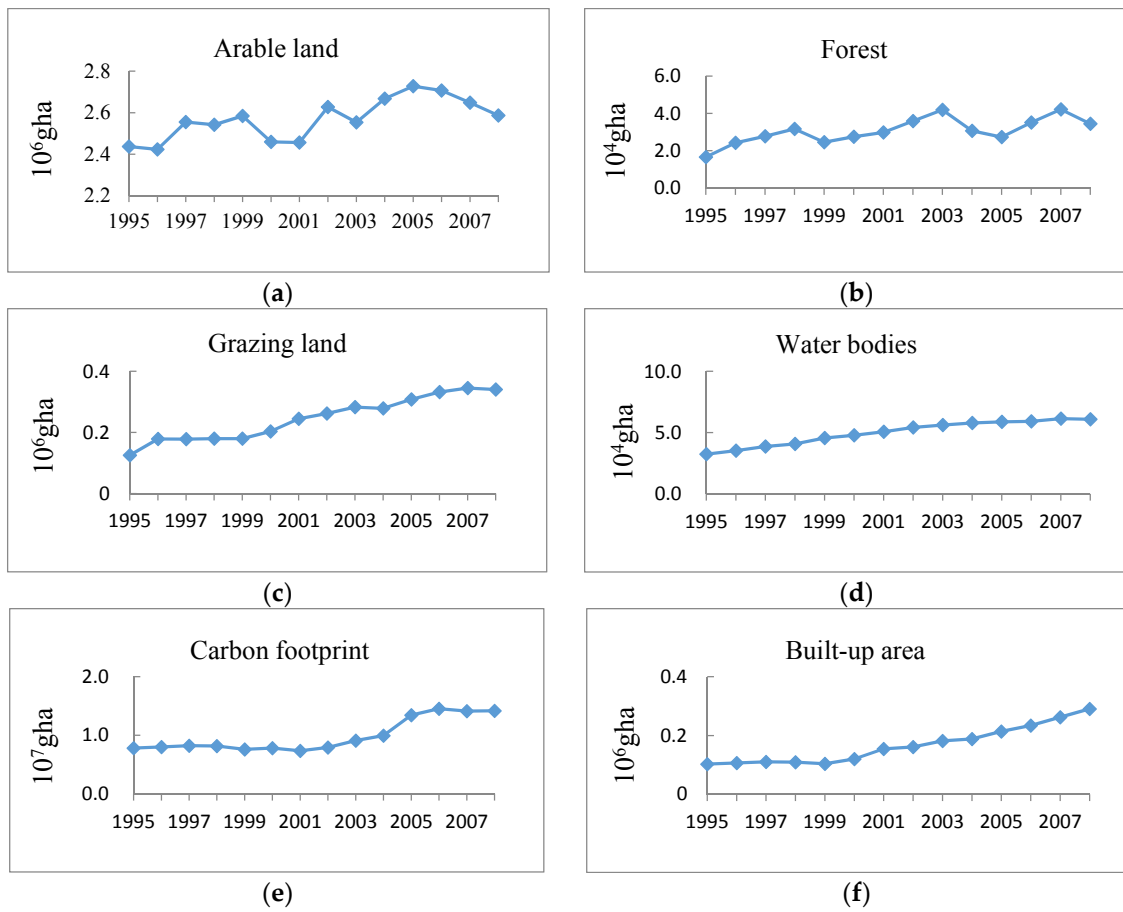


Figure 3. Ecological footprint evolution of corresponding biologically productive land (1995–2008): (a) Arable land; (b) Forest; (c) Grazing land; (d) Water bodies; (e) Carbon footprint (carbon uptake land); (f) Built-up area.

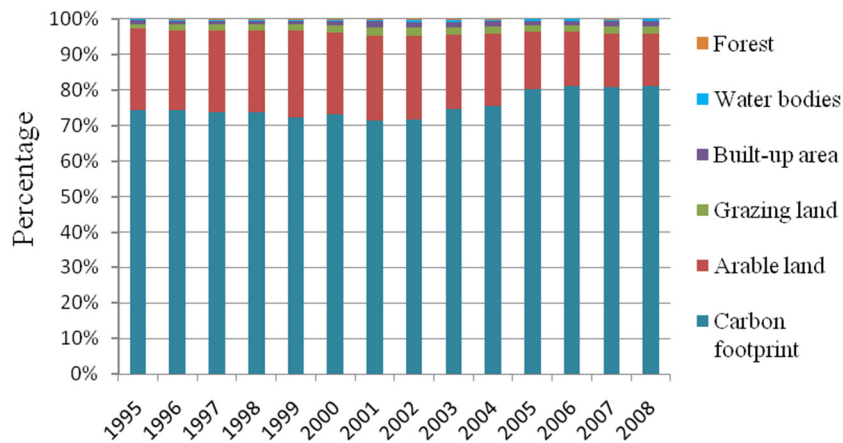


Figure 4. Percentage of ecological footprint components in Wuhan, 1995–2008.

4.2. Evolution Trends of Ecological Deficit or Surplus during 1995–2008

According to Formula (2), we calculated the biocapacity of Wuhan and the gap between the biocapacity and ecological footprint in 1995, 2000, 2005, and 2008 to show the changes of ecological deficit or surplus in the region. The biocapacity in the region slightly decreased from about 0.36 gha per

person in 1995 to about 0.31 gha per person in 2008. It remained at such a low level that there existed ecological deficit in the city during 1995–2008. As the ecological footprint increased in the meantime, it led to a fierce growth in the ecological deficit per capita so that the level increased by 60% during 1995–2008 (Table 2). Within the biocapacity components, arable land provided the most biological resources, which accounted for no less than 80% of the biocapacity during the period, followed by built-up area offering electric energy and forest producing timber and fruits, *etc.* In addition, it was observed that the capacity of arable land, forest, grazing land and water bodies continuously declined, though the built-up area did not, implying that the ecosystem's ability to provide biological resources became weaker than before (Table 3, Figure 5).

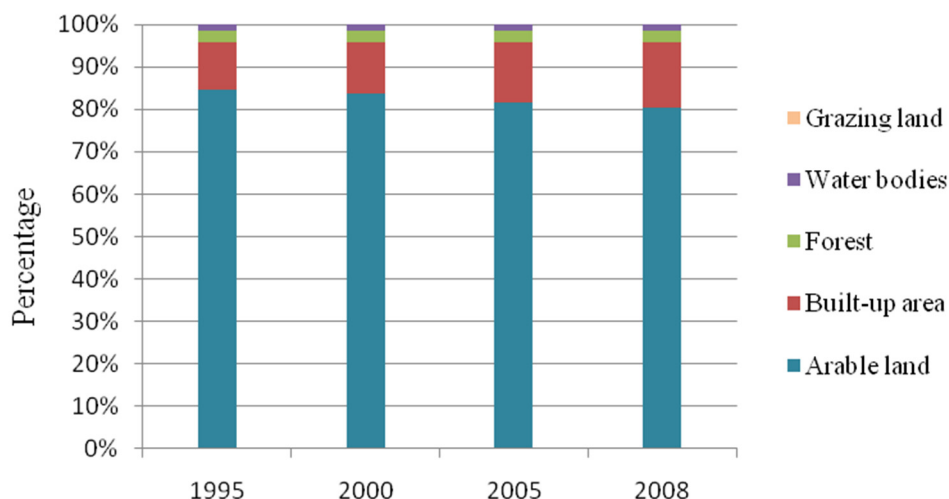


Figure 5. Percentage of biocapacity components in the examined years.

Table 3. Biocapacity including its components on biological productive land types and ecological deficit in examined years.

Year	Arable Land	Forest	Grazing Land	Water Bodies	Built-up Area	Biocapacity	Ecological Footprint	Biodiversity
1995	0.3036	0.0102	9.314×10^{-5}	0.0047	0.0408	0.3594	1.4806	0.0435
2000	0.2855	0.0097	8.702×10^{-5}	0.0045	0.0412	0.3409	1.4252	0.0409
2005	0.2604	0.0090	7.626×10^{-5}	0.0042	0.0460	0.3197	2.0950	0.0373
2008	0.2474	0.0086	7.193×10^{-5}	0.0040	0.0480	0.3081	2.1009	0.0355

All data are in gha per capita.

By comparing the usable biocapacity for people with the ecological footprint in terms of each productive land category, the ecological deficit or surplus of each land type was estimated. Arable land, grazing land, water bodies and carbon uptake land showed an almost increasing ecological deficit in most of the studied time. Fortunately, forest and built-up area had an ecological surplus in the region, meaning their provision ability was stronger than the consumption amount. However, the declining trend of these two productive land types' ecological surplus is rather obvious, which indicates that consumption may enlarge in future while the provision capacity is quite limited (Table 4).

Table 4. Changes of ecological deficit or surplus of biologically productive land categories in examined years.

Year	Arable Land	Forest	Grazing Land	Water Bodies	Carbon Uptake Land	Built-up Area	Ecological Deficit
1995	−0.0396	0.0079	−0.0176	0.0001	−1.0983	0.0263	−1.1212
2000	−0.0428	0.0060	−0.0270	−0.0019	−1.0437	0.0251	−1.0843
2005	−0.0800	0.0056	−0.0384	−0.0031	−1.6787	0.0193	−1.7753
2008	−0.0631	0.0045	−0.0408	−0.0033	−1.7033	0.0131	−1.7928

Positive data represents ecological surplus, and negative data represents ecological deficit. All data are in gha per capita.

5. Discussion

5.1. Comparisons with Other Evidence

The estimated changing trend of the ecological footprint in this work was quite similar to other scholars' latest research, such as that of Huang *et al.* [37], who showed the city's two distinct development phases of the ecological footprint between 1995–2001 and 2001–2008. This implies that temporal changes are comparable with other big cities in China. The discrepancy of the specific EF values in each year probably stems from the differences of the parameters applied in calculation and partly from the differences of the collected source data. The component analysis by Huang also stated that the carbon footprint was the principle component of the total EF of the city in 2012, while indicating that this city demanded and consumed much more than Guangzhou, Beijing and Shanghai at the individual level.

Due to the differences of statistical data ranges among countries, it may be unpractical to relate the specific values of EF or EF per capita in Wuhan to other big cities worldwide. However, the dissimilarity in the EF component between Chinese societies and western countries could be clearly observed: unlike the carbon footprint being the predominant component in the ecological footprint in Wuhan, the major component in Metro Vancouver, Canada, for instance, was the food footprint in 2006, within which the food materials (production) contributed 81% of the ecological footprint, followed by energy consumption such as the transportation footprint and the buildings footprint with operating energy contributing the most [14]. The enormous variation implicated, to some extent, that fossil fuels were overused in the city compared to similar cities in developed countries.

5.2. Implications for Resource Consumption and Regional Land Use

During 1995–2008, both the total amount and per capita amount of the ecological footprint in Wuhan underwent three periods of development: fluctuation at a relatively low level during 1995–2001, then increasing from 2001 to 2006, and a slight reduction again but maintaining a relatively high level during 2006–2008. However, different biologically productive land categories gave different contributions, which means biological products and energy consumption in the region varied significantly with the time.

As for arable land in Wuhan City, which is the predominant productive land providing biological resources, the yields of the main crops, including paddy rice, corn, vegetables and rape seeds, *etc.*, are highly dependent on the plantation areas, which are closely related to complex socio-economic factors such as the conversion of arable land to built-up areas, farmers' expectations on production cost and income, and agricultural policies. As is known to all that China began its fantastic urbanization process from the late 1990s, large amounts of arable land have been occupied by urban and infrastructural build-ups. A similar situation also happened in Wuhan. The loss of arable land reached 229 km² within the study period, while the built-up area increased hugely from 618 km² to 854 km² during 1995–2008. Under this circumstance as well as accompanying farmers' migration to cities with higher income, crop farming with lower benefits not attracting young farmers any longer, even though China has cancelled the tax on agricultural products since the very beginning of 2006. As a result, the

biocapacity of arable land in Wuhan will probably continue decreasing in the near future, as it showed during the examined time period. That implies the crop-producing potential in this metropolitan region may be extremely limited. Correspondingly, the control of arable land conversion should be strictly implemented to avoid excessive arable land loss, and to prevent the substantial reduction of biocapacity and biodiversity.

Forest contributes as the only land type with a surplus capacity for producing biological resources in Wuhan during the studied period. Although the forest area is not large enough, its amount of consumption is quite moderate. This is highly ascribed to its concentrated distribution, and it plays a significant role in city excursions and recreation for the local inhabitants instead of provisioning forestry products. In contrast, grazing land in Wuhan is dispersedly distributed, and some of it is near the rural built-up areas and is facing degradation. Consistent inadequate utilization of the very limited grazing land results in it ranking in third place in the footprint component but in last place in biocapacity.

Due to comprising the second largest amount of actual area, the biocapacity of water bodies shows an almost stable situation over the 14 years, even though it is very small. However, with the increasing fishery productivity, its ecological surplus unfortunately turned into an ecological deficit, and the gap seems to grow larger with the time. Since natural products in the water bodies in Wuhan became markedly fewer, artificial breeding absolutely dominates the regional fishing industry, and it is obvious to see that the productivity has exceeded its own capacity. As the demand for aquaculture products grows, there will be greater biological risk for waters unless the local government manages to restrain fishermen from overfishing.

Besides biological resource production varying with time, energy consumption accounts for the largest proportions both in the total ecological footprint and in the ecological deficit of Wuhan within the period. Considering the increase of population in the region, which reached 10.33 million in 2014 from 8.33 million in 2008, the quick growth of energy consumption may lead to an exaggeration of the carbon footprint and the regional ecological deficit in future. Since carbon emission caused by the burning of fossil fuels is still increasing worldwide, it could be easily estimated that energy consumption in this quickly industrializing and urbanizing area will keep rising, which will lead to the growth of the carbon footprint. Actually, the decrease in biodiversity and the increase of the ecological deficit during 1995–2008 already showed this situation. What is worth noting is that coal, coke and crude oil are the major energy consumption sources in this city during the studied period. Consequently, substantial cuts in the burning of these fossil fuels could be one of the vital measurements in avoiding more pressures on the local environment and preventing an irretrievable impact on sustainable development.

5.3. Limitations of the Assessment

There are still some uncertainties and shortcomings in this research. First and foremost, the incompleteness of the data source is still an obstacle in improving the accuracy of the ecological footprint and its components, even though we tried our best to collect raw data as much as possible. Failing to collect the land use data in each year during the studied period resulted in only analyzing the region's biocapacity for the specific years of 1995, 2000, 2005 and 2008, which weakened the accuracy of the changes in biocapacity and the consequential ecological deficit/surplus.

In addition, although the ecological footprint method has made many contributions to sustainability assessment, there are several limitations due to its theoretical design. The global average productivity for energy consumption, for instance, cited from the research by Wackernagel [5], which is an unchanged productivity factor, is obviously deficient. There already has been research pointing out this weakness that has proposed the net primary productivity (NPP) method to estimate the energy productivity factor [38], which has widespread applications in ecosystems from the biophysical perspective [39,40]. Other major received criticisms included great uncertainties about the equivalence factors, failure to allocate other species [38], and probable heavy errors in the assessment results based

on the global average productivity when calculating at regional scales [41]. These weaknesses have hindered the wider acceptance and application of the approach.

Furthermore, there were obvious limitations in our current research in terms of discussing explanatory variables, since this work was limited to aiming at examining the dynamic changes of EF and biocapacity as well as the component changes of a typical city in China. The levels of the ecological footprint and EF per capita in a country or a region are highly related to the social and economic characteristics, and they vary significantly in space. Research has shown that the roles of the environmental intensity and income in the variation of EF per capita among nations could not be ignored [42]. Challenges also exist in, at the basis of the EF component analysis, how to quantify the extent of the contributions of explanatory variables such as economic structure, demographic characteristics and technology towards the ecological footprint, [43]. Therefore, future explorations that explore social and economic factors related to the regional ecological footprint are needed to deepen EF analysis.

6. Conclusions

Ecological footprint analysis presents an overall view on the people's impact on natural resources and how the resources are utilized within the region, for instance whether they are overused or what amount of resources is maintained for sustainability.

The work in this paper examined ecological footprint evolution and provided a detailed estimation of footprint changes on the six biologically productive land types in Wuhan City during the time of 1995–2008. The research reveals that the footprints of the productive lands increased most of the time in the region, especially that of the grazing land, water bodies, carbon uptake land and built-up area, showing that there is a great impact on the ecosystem induced by humans' manufacturing and consumption. Among the six footprint components, the carbon footprint contributed the most across the whole time period, implying a relatively high level of energy consumption. Compared to the declining biocapacity, it was found that a gradually aggravated ecological deficit exists in the region, which increased from 1.12 gha per capita in 1995 to 1.79 gha per capita in 2008. The research also points out that cutting down the consumption of fossil fuels could play a very important role in reducing the carbon footprint and the overall ecological deficit of the city.

Acknowledgments: The work in this paper was supported by the National Natural Science Funds of China (Grant No. 71225005, 71533004 and 41501593). The authors also want to thank PhD candidate Yang Bin for assisting with data processing.

Author Contributions: Xiaowei Yao wrote the manuscript and analyzed the data. Zhanqi Wang designed the research work. Hongwei Zhang did data processing for the case study.

Conflicts of Interest: The authors declare no conflict of interest.

References

1. Weinzettel, J.; Hertwich, E.G.; Peters, G.P.; Steen-Olsen, K.; Galli, A. Affluence drives the global displacement of land use. *Glob. Environ. Change* **2013**, *23*, 433–438. [[CrossRef](#)]
2. Butchart, S.H.; Walpole, M.; Collen, B.; Van Strien, A.; Scharlemann, J.O.R.P.; Almond, R.E.; Baillie, J.E.M.; Bomhard, B.; Brown, C.; Bruno, J.; *et al.* Global biodiversity: Indicators of recent declines. *Science* **2010**, *328*, 1164–1168. [[CrossRef](#)] [[PubMed](#)]
3. Foley, J.A.; DeFries, R.; Asner, G.P.; Barford, C.; Bonan, G.; Carpenter, S.R.; Chapin, F.S.; Coe, M.T.; Daily, G.C.; Gibbs, H.K.; *et al.* Global consequences of land use. *Science* **2005**, *309*, 570–574. [[CrossRef](#)] [[PubMed](#)]
4. Deng, X.; Zhao, C.; Lin, Y.; Zhang, T.; Qu, Y.; Zhang, F.; Wang, Z.; Wu, F. Downscaling the Impacts of Large-Scale LUCC on Surface Temperature along with IPCC RCPs: A Global Perspective. *Energies* **2014**, *7*, 2720–2739. [[CrossRef](#)]
5. Wackernagel, M.; Onisto, L.; Bello, P.; Linares, A.C.; Falf, A.N.I.S.L.O.; Garc, I.A.J.M.E.N.; Guerrero, A.I.S.; Guerrero, M.G.S. National natural capital accounting with the ecological footprint concept. *Ecol. Econ.* **1999**, *29*, 375–390. [[CrossRef](#)]

6. Odum, H.T. *Environmental Accounting: Emery and Environmental Decision Making*; John Wiley: New York, NY, USA, 1996.
7. Kennedy, C.; Pincetl, S.; Bunje, P. The study of urban metabolism and its applications to urban planning and design. *Environ. Pollut.* **2011**, *159*, 1965–1973. [[CrossRef](#)] [[PubMed](#)]
8. Siche, J.R.; Agostinho, F.; Ortega, E.; Romeiro, A. Sustainability of nations by indices: Comparative study between environmental sustainability index, ecological footprint and the emery performance indices. *Ecol. Econ.* **2008**, *66*, 628–637. [[CrossRef](#)]
9. Borucke, M.; Moore, D.; Cranston, G.; Gracey, K.; Iha, K.; Larson, J.; Lazarus, E.; Morales, J.C.; Wackernagel, M.; Galli, A. Accounting for demand and supply of the biosphere's regenerative capacity: The National Footprint Accounts' underlying methodology and framework. *Ecol. Econ.* **2013**, *24*, 518–533. [[CrossRef](#)]
10. World Wild Fund (WWF). Living Planet Report 2014. Available online: <http://www.worldwildlife.org/publications/living-planet-report-2014> (accessed on 15 December 2015).
11. Wackernagel, M.; Monfreda, C.; Erb, K.H.; Haberl, H.; Schulz, N.B. Ecological footprint time series of Austria, the Philippines, and South Korea for 1961–1999: Comparing the conventional approach to an “actual land area” approach. *Land Use Policy* **2004**, *21*, 261–269. [[CrossRef](#)]
12. Pereira, L.; Ortega, E. A modified footprint method: The case study of Brazil. *Ecol. Econ.* **2012**, *16*, 113–127. [[CrossRef](#)]
13. Palacios-Agundez, I.; Onaindia, M.; Barraqueta, P.; Madariaga, I. Provisioning ecosystem services supply and demand: The role of landscape management to reinforce supply and promote synergies with other ecosystem services. *Land Use Policy* **2015**, *47*, 145–155. [[CrossRef](#)]
14. Moore, J.; Kissinger, M.; Rees, W.E. An urban metabolism and ecological footprint assessment of Metro Vancouver. *J. Environ. Manag.* **2013**, *124*, 51–61. [[CrossRef](#)] [[PubMed](#)]
15. Finkbeiner, M. Product environmental footprint-breakthrough or breakdown for policy implementation of life cycle assessment? *Int. J. Life Cycle Assess.* **2014**, *19*, 266–271. [[CrossRef](#)]
16. Pelletier, N.; Allacker, K.; Pant, R.; Manfredi, S. The European Commission Organisation Environmental Footprint method: Comparison with other methods, and rationales for key requirements. *Int. J. Life Cycle Assess.* **2014**, *19*, 387–404. [[CrossRef](#)]
17. Wiedema, B.P.; Thrane, M.; Christensen, P.; Schmidt, J.; Løkke, S. Carbon footprint: A catalyst for life cycle assessment? *J. Ind. Ecol.* **2008**, *12*, 3–6. [[CrossRef](#)]
18. Strohbach, M.W.; Arnold, E.; Haase, D. The carbon footprint of urban green space—A life cycle approach. *Landsc. Urban Plan.* **2012**, *104*, 220–229. [[CrossRef](#)]
19. Hoekstra, A.Y.; Hung, P.Q. *Virtual Water Trade: A Quantification of Virtual Water Flows between Nations in Relation to International Crop Trade*; UNESCO-IHE Value of Water Research Report Series; UNESCO-IHE: Delft, The Netherlands, 2002.
20. Ferng, J. Toward a scenario analysis framework for energy footprints. *Ecol. Econ.* **2002**, *40*, 53–69. [[CrossRef](#)]
21. Lenzen, M.; Moran, D.; Kanemoto, K.; Foran, B.; Lobefaro, L.; Geschke, A. International trade drives biodiversity threats in developing nations. *Nature* **2012**, *486*, 109–112. [[CrossRef](#)] [[PubMed](#)]
22. Guttikunda, S.K.; Tang, Y.; Carmichael, G.R.; Kurata, G.; Pan, L.; Streets, D.G.; Woo, J.-H.; Thongboonchoo, N.; Fried, A. Impacts of Asian megacity emissions on regional air quality during spring 2001. *J. Geophys. Res.* **2005**, *110*. [[CrossRef](#)]
23. Leach, A.M.; Galloway, J.N.; Bleeker, A.; Erisman, J.W.; Kohn, R.; Kitzes, J. A nitrogen footprint model to help consumers understand their role in nitrogen losses to the environment. *Environ. Dev.* **2012**, *1*, 40–66. [[CrossRef](#)]
24. Wang, F.; Sims, J.T.; Ma, L.; Ma, W.; Dou, Z.; Zhang, F. The phosphorus footprint of China's food chain: Implications for food security, natural resource management, and environmental quality. *J. Environ. Qual.* **2011**, *40*, 1081–1089. [[CrossRef](#)] [[PubMed](#)]
25. Giljum, S.; Burger, E.; Hinterberger, F.; Lutter, S.; Bruckner, M. A comprehensive set of resource use indicators from the micro to the macro level. *Resour. Conserv. Recy.* **2011**, *55*, 300–308. [[CrossRef](#)]
26. Stoeglehner, G.; Narodoslawsky, M. Implementing ecological footprinting in decision-making processes. *Land Use Policy* **2008**, *25*, 421–31. [[CrossRef](#)]

27. Galli, A.; Wiedmann, T.; Ercin, E.; Knoblauch, D.; Ewing, B.; Giljum, S. Integrating ecological, carbon and water footprint into a “footprint family” of indicators: Definition and role in tracking human pressure on the planet. *Ecol. Econ.* **2012**, *16*, 100–112. [[CrossRef](#)]
28. Weinzettel, J.; Steen-Olsen, K.; Hertwich, E.G.; Borucke, M.; Galli, A. Ecological footprint of nations: Comparison of process analysis, and standard and hybrid multiregional input-output analysis. *Ecol. Econ.* **2014**, *101*, 115–126. [[CrossRef](#)]
29. Ahlroth, S.; Nilsson, M.A.N.; Finnveden, G.O.R.; Hjelm, O.; Hochschorner, E. Weighting and valuation in selected environmental systems analysis tools—Suggestions for further developments. *J. Clean. Prod.* **2011**, *19*, 145–156. [[CrossRef](#)]
30. Hoekstra, A.Y.; Chapagain, A.K.; Zhang, G. Water Footprints and Sustainable Water Allocation. *Sustainability* **2016**, *8*. [[CrossRef](#)]
31. Chen, B.; Chen, G.Q. Modified ecological footprint accounting and analysis based on embodied exergy—A case study of the Chinese society 1981–2001. *Ecol. Econ.* **2007**, *61*, 355–376. [[CrossRef](#)]
32. Chen, C.; Lin, Z. Multiple timescale analysis and factor analysis of energy ecological footprint growth in China 1953–2006. *Energy Policy* **2008**, *36*, 1666–1678. [[CrossRef](#)]
33. Wackernagel, M.; Rees, W. *Our Ecological Footprint*; New Society Publishers: Gabriola Island, BC, Canada, 1996.
34. World Commission on Environment and Development (WCED). Our Common Future. Available online: <http://www.un-documents.net/our-common-future> (accessed on 1 December 2015).
35. Kitzes, J.; Galli, A.; Bagliani, M.; Barrett, J.; Dige, G.; Ede, S.; Erb, K.; Giljum, S.; Haberl, H.; Hails, C.; *et al.* A research agenda for improving national Ecological Footprint accounts. *Ecol. Econ.* **2009**, *68*, 1991–2007. [[CrossRef](#)]
36. Yao, X.; Wang, Z.; Wang, H. Impact of urbanization and land-use change on surface climate in middle and lower reaches of the Yangtze River, 1988–2008. *Adv. Meteorol.* **2015**. [[CrossRef](#)]
37. Huang, L.; Yan, L.; Wu, J. Assessing urban sustainability of Chinese megacities: 35 years after the economic reform and open-door policy. *Landsc. Urban Plan.* **2016**, *145*, 57–70. [[CrossRef](#)]
38. Venetoulis, J.; Talberth, J. Refining the ecological footprint. *Environ. Dev. Sustain.* **2008**, *10*, 441–469. [[CrossRef](#)]
39. Song, W.; Deng, X. Effects of Urbanization-Induced Cultivated Land Loss on Ecosystem Services in the North China Plain. *Energies* **2015**, *8*, 5678–5693. [[CrossRef](#)]
40. Siche, J.R.; Agostinho, F.; Ortega, E. Emery Net Primary Production (ENPP) as basis for calculation of Ecological Footprint. *Ecol. Indic.* **2010**, *10*, 475–483. [[CrossRef](#)]
41. Erb, K.H. Actual land demand of Austria 1926–2000: A variation on Ecological Footprint assessments. *Land Use Policy* **2004**, *21*, 247–259. [[CrossRef](#)]
42. Duro, J.A.; Teixidó-Figuerras, J. Ecological footprint inequality across countries: The role of environment intensity, income and interaction effects. *Ecol. Econ.* **2013**, *93*, 34–41. [[CrossRef](#)]
43. Teixidó-Figuerras, J.; Duro, J.A. The building blocks of International Ecological Footprint inequality: A Regression-Based Decomposition. *Ecol. Econ.* **2015**, *118*, 30–39. [[CrossRef](#)]



© 2016 by the authors; licensee MDPI, Basel, Switzerland. This article is an open access article distributed under the terms and conditions of the Creative Commons by Attribution (CC-BY) license (<http://creativecommons.org/licenses/by/4.0/>).