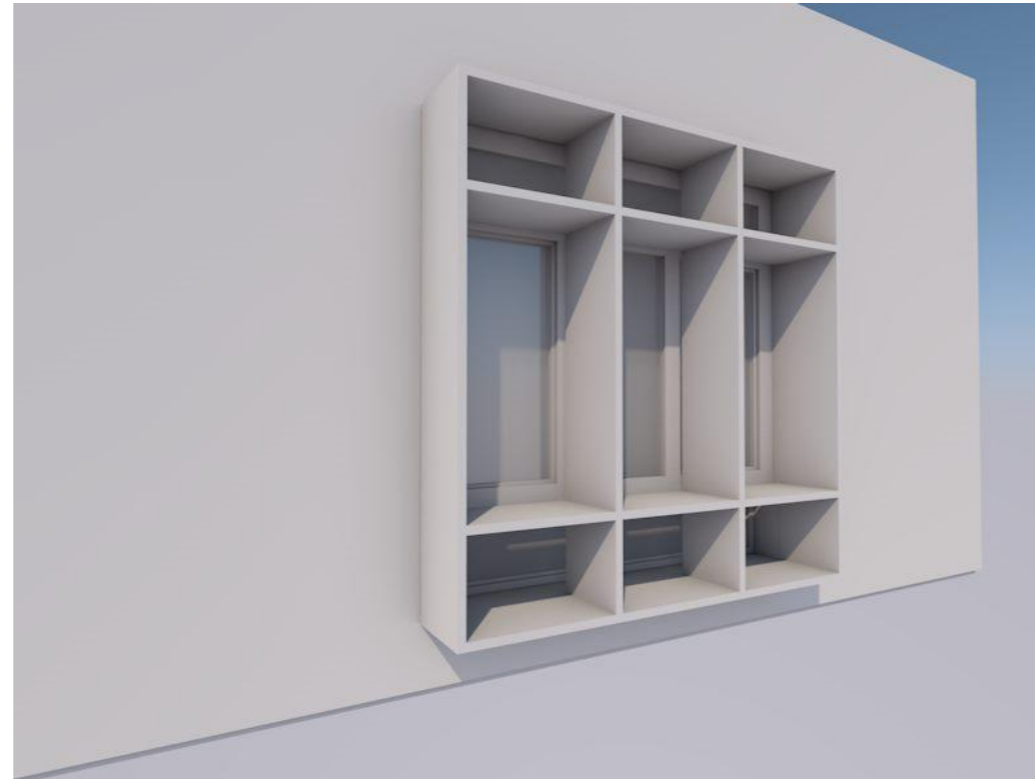
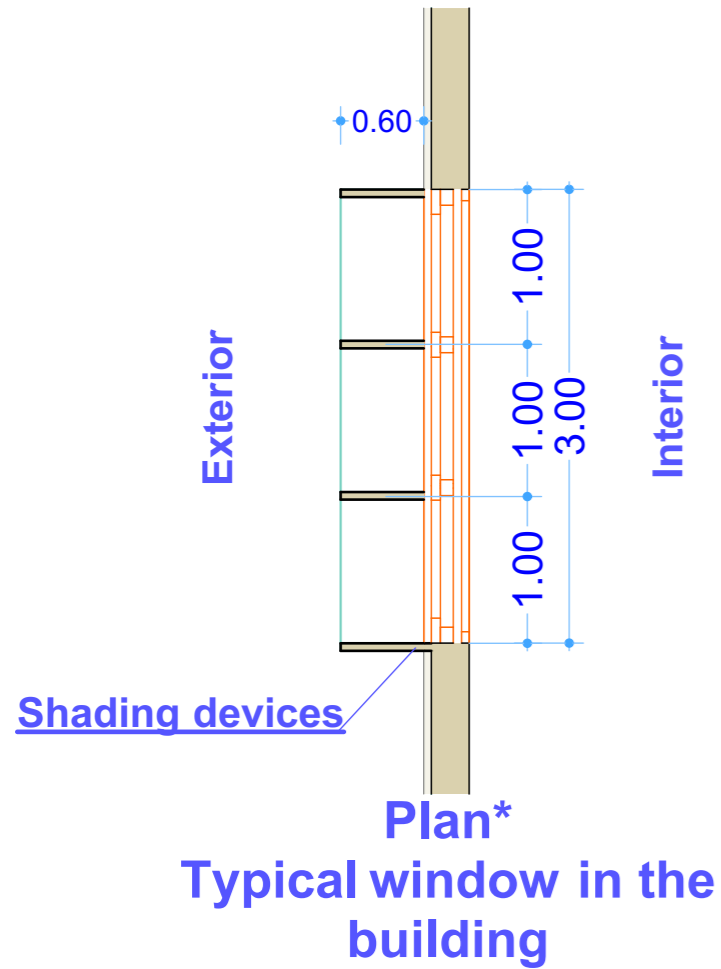


# Supplementary 1



3D view  
After adding shading devices



Figure 2  
Existing situation

## Shading devices:

**Use of 0.60 m vertical and horizontal fixed exterior shading devices which are 1 m apart from each other**

## Run 3

\* all dimensions are in meter

## Windows optimization:

**Triple low-E coating glazing, with argon fill as supernumerary glazing, and timber frames (U-value 1.0 W/m<sup>2</sup>K).**

## Run 2

