

Figure S1 Soil temperature observations measured near Amdo County during 1998 to 2014.

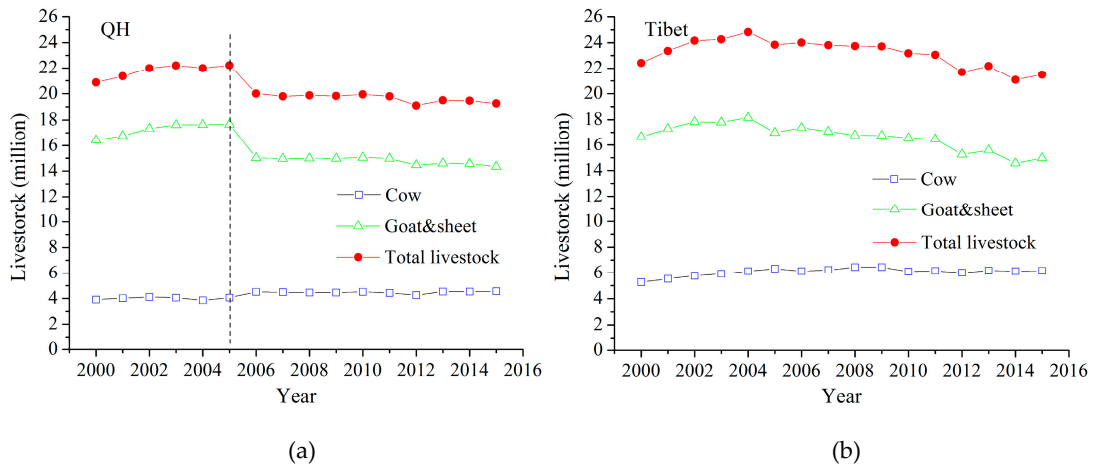


Figure S2 Livestock numbers of Qinghai Province (a) and Tibet (b) during 2000 to 2015.

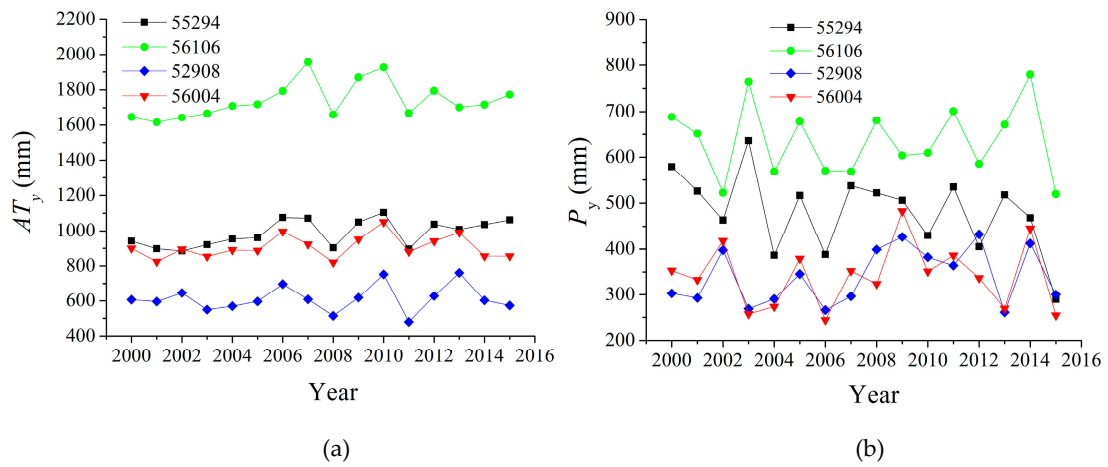


Figure S3 The AT_y (a) and P_y values (b) from 2000 to 2015 at the 4 meteorological stations

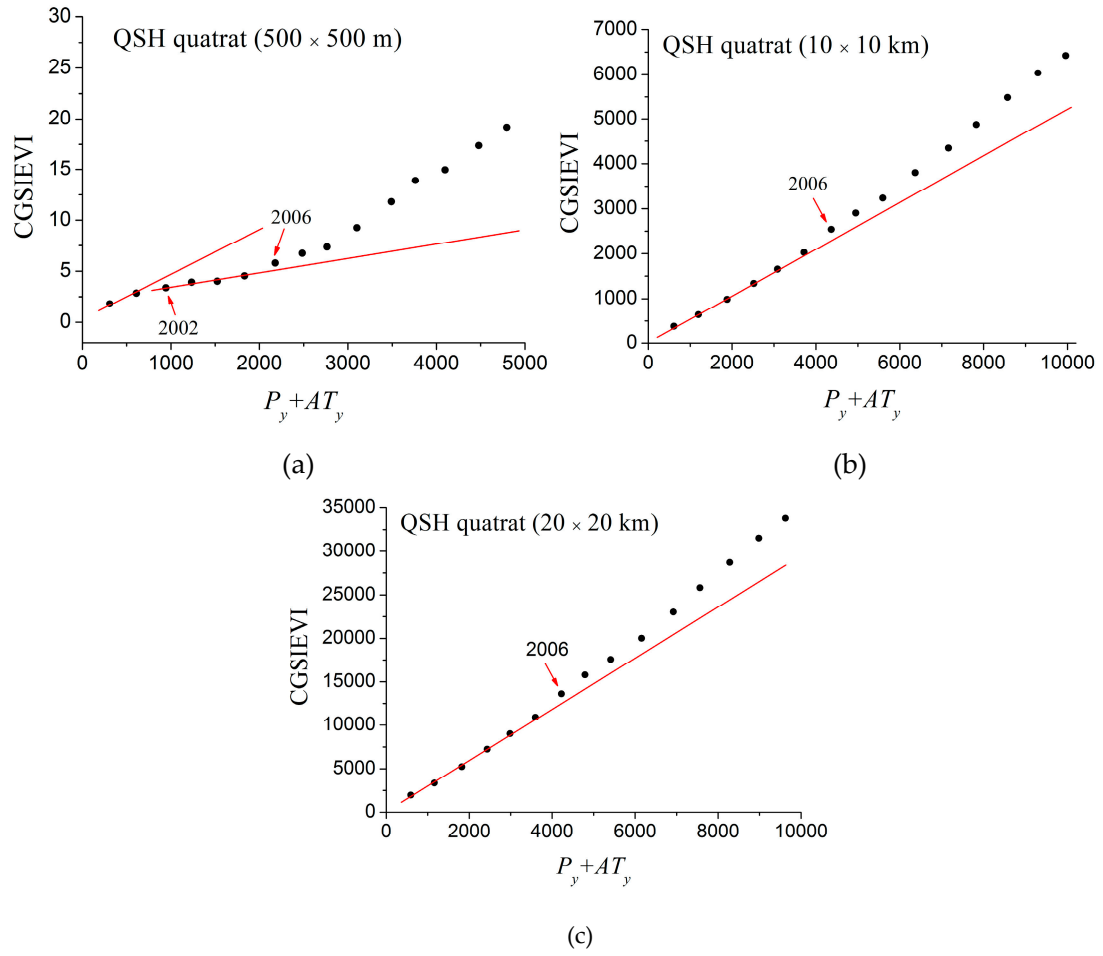


Figure S4 DMCs for quadrats in the QSH key region at scales of (a) 500 × 500 m, (b) 10 × 10 km and (c) 20 × 20 km.

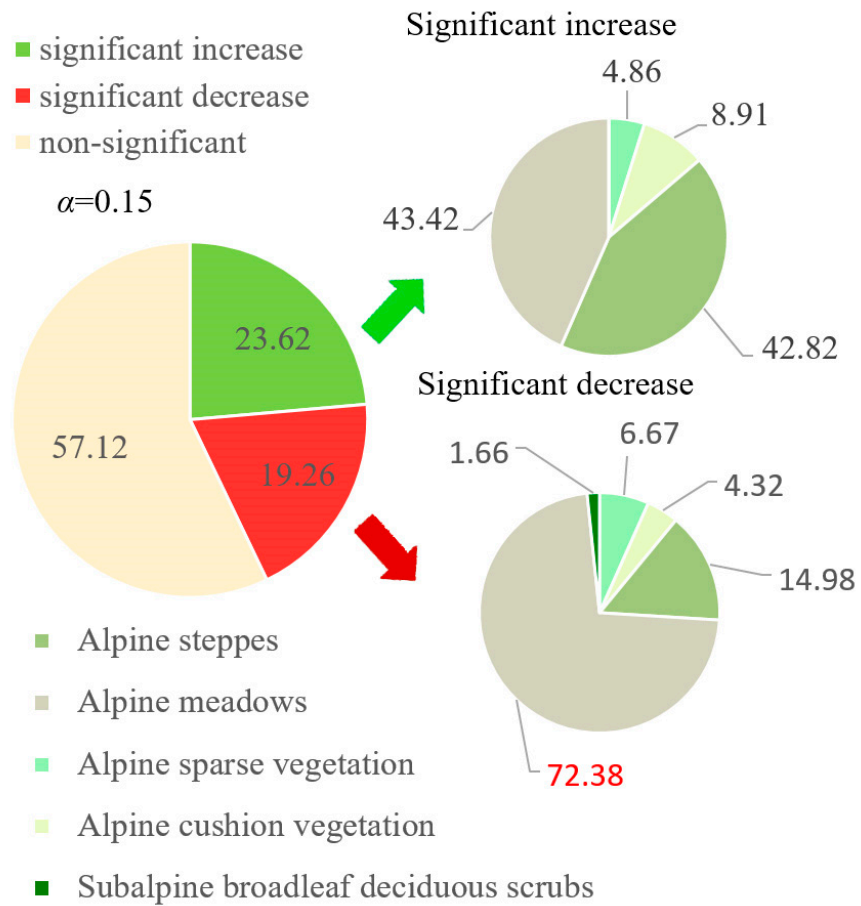


Figure S5 Summary statistics on the change trends for different vegetation types.