

Table S1. Same as Table 5 but using only overlapping dates.

	R			bias			RMSE			UbrMSE		
	CCI	IC	ASCAT	CCI	IC	ASCAT	CCI	IC	ASCAT	CCI	IC	ASCAT
FRAYE N=174	0.60 (0.56)	0.53 (0.14)	0.64 (0.58)	0.0014	-0.102	0.014	0.074	0.129	0.086	0.074	0.079	0.085
GRANDCAL N=169	0.74 (0.52)	0.64 (0.39)	0.73 (0.50)	0.079	-0.023	0.093	0.089	0.059	0.116	0.042	0.054	0.069
HILLAN2 N=134	0.85 (0.74)	0.75 (0.64)	0.82 (0.75)	0.031	-0.063	0.044	0.042	0.076	0.077	0.027	0.042	0.063
NEZER N=148	0.76 (0.64)	0.62 (0.40)	0.81 (0.64)	0.118	0.133	0.111	0.1239	0.158	0.150	0.034	0.085	0.102
PARCMETEO N=284	0.76 (0.49)	0.59 (0.56)	0.70 (0.58)	0.079	-0.039	0.081	0.088	0.068	0.120	0.037	0.055	0.088
Average	0.74 (0.59)	0.62 (0.43)	0.74 (0.61)	0.061	-0.018	0.068	0.083	0.098	0.109	0.042	0.063	0.081

Table S2. Same as Table 6 but using only overlapping dates.

	R			bias			RMSE			UbRMSE		
	CCI	IC	ASCAT	CCI	IC	ASCAT	CCI	IC	ASCAT	CCI	IC	ASCAT
Bilos_E N=225	0.81 (0.66)	0.60 (0.46)	0.79 (0.63)	0.069	0.09	0.094	0.075	0.119	0.132	0.028	0.078	0.093
Bilos_N N=254	0.77 (0.51)	0.63 (0.45)	0.78 (0.60)	0.067	0.0813	0.087	0.074	0.111	0.126	0.030	0.076	0.090
Bilos_S N=252	0.56 (0.60)	0.53 (0.44)	0.59 (0.62)	0.009	0.025	0.033	0.062	0.088	0.102	0.061	0.084	0.096
Average	0.71 (0.59)	0.59 (0.45)	0.72 (0.61)	0.048	0.065	0.071	0.070	0.106	0.120	0.039	0.079	0.093

Table S3. Same as Table 7 but using only overlapping dates.

	R			Bias			RMSE			UbRMSE		
	CCI	IC	ASCAT	CCI	IC	ASCAT	CCI	IC	ASCAT	CCI	IC	ASCAT
C5_1 N=174	0.77 (0.66)	0.67 (0.60)	0.72 (0.71)	0.08	-0.004	0.120	0.084	0.047	0.148	0.031	0.046	0.087
C5_2 N=174	0.60 (0.50)	0.58 (0.55)	0.52 (0.58)	0.096	0.012	0.138	0.104	0.053	0.169	0.039	0.052	0.099
C6_1 N=174	0.79 (0.65)	0.77 (0.62)	0.78 (0.70)	0.109	0.026	0.151	0.113	0.052	0.178	0.027	0.045	0.095
C6_2 N=173	0.79 (0.61)	0.70 (0.57)	0.72 (0.67)	0.089	0.006	0.130	0.094	0.045	0.158	0.028	0.044	0.089
Average	0.74 (0.61)	0.68 (0.59)	0.69 (0.67)	0.093	0.010	0.134	0.098	0.049	0.163	0.031	0.046	0.092

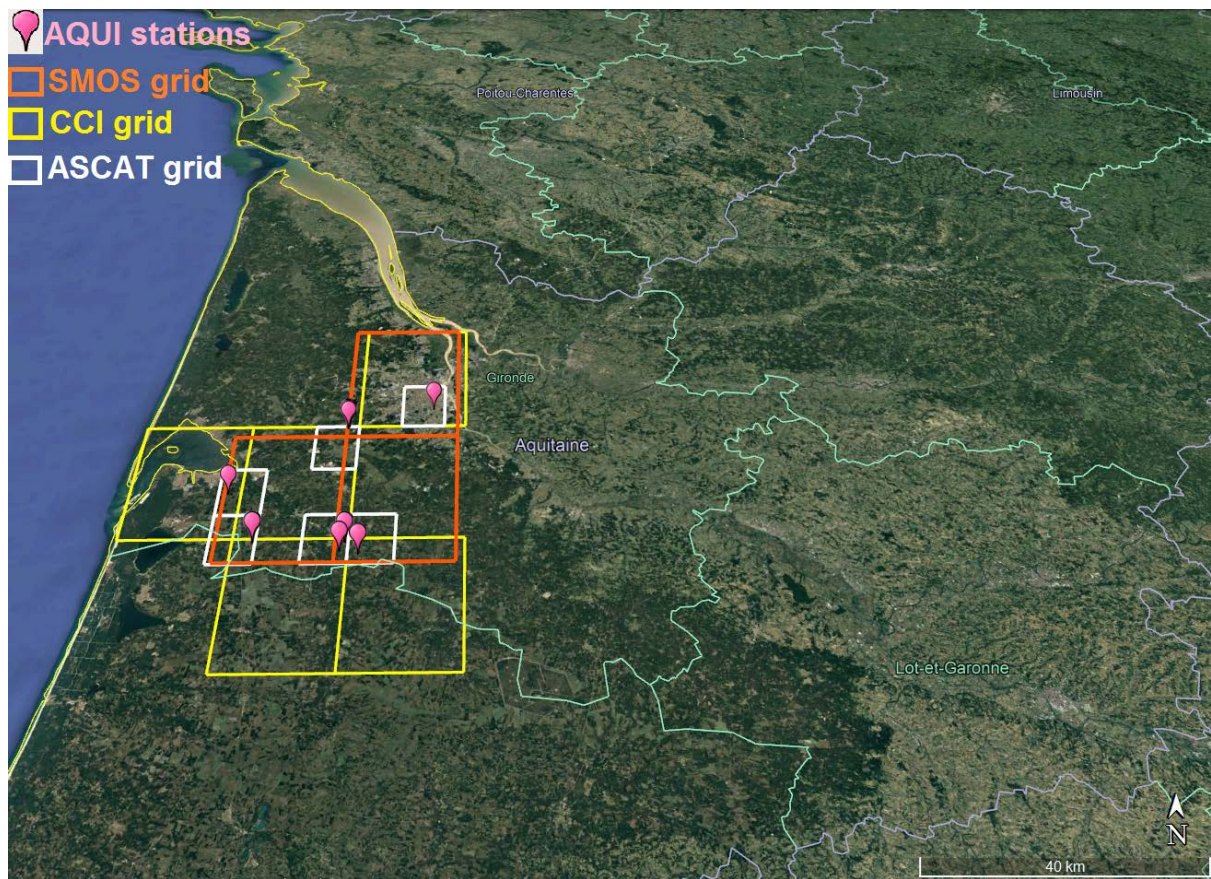


Figure S1. The AQUI in situ stations distributed in the contributing area" for a single grid point for SMOS, ASCAT, and CCI.