

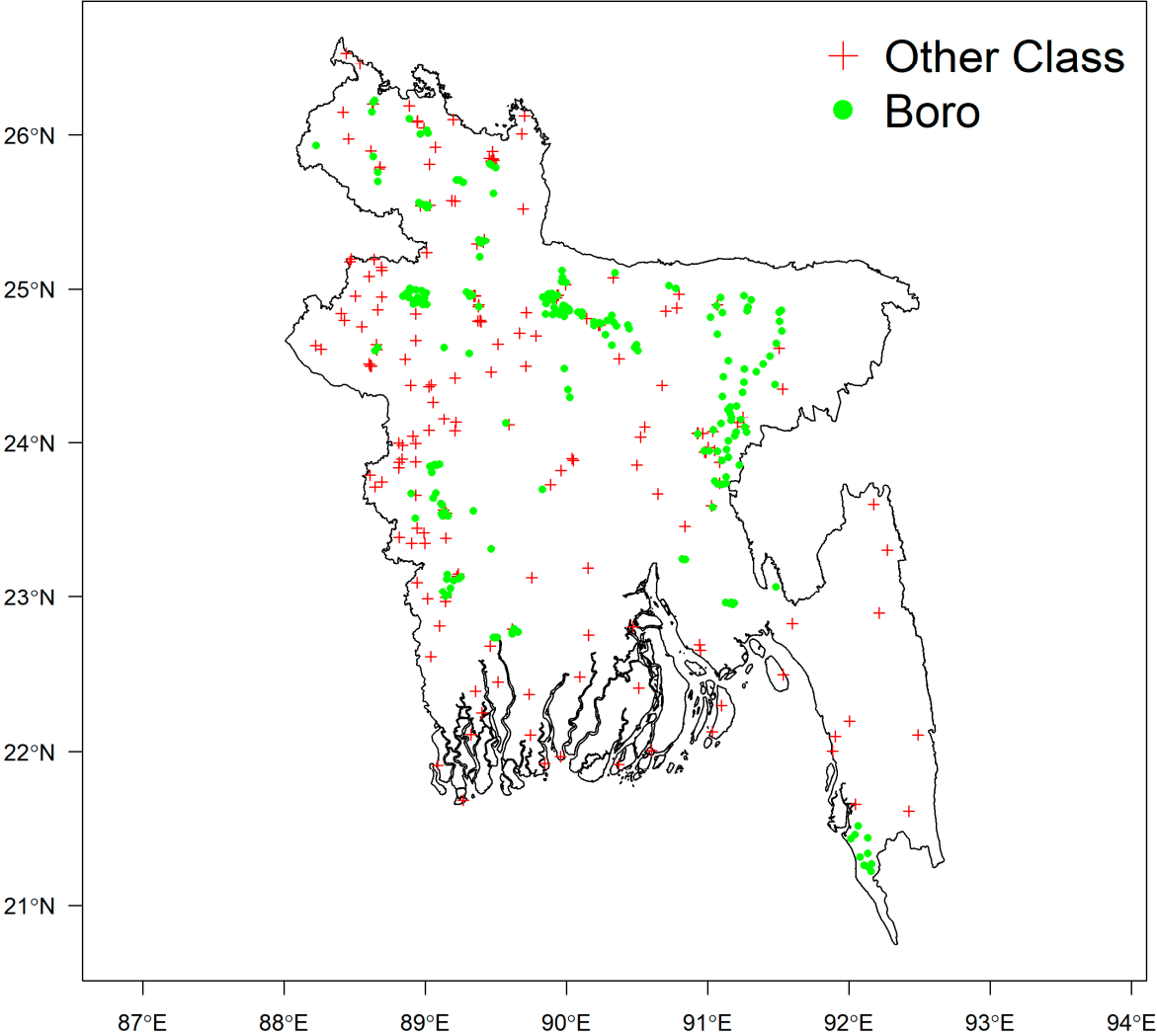
Supplementary Information.

Title: "Identifying Dry-Season Rice-Planting Patterns in Bangladesh using the Landsat Archive".

**Table S1.** Rice seasons and production, BBS reporting for 2013–2016.

<b>Season</b>	<b>Year</b>	<b>Area (1000s hectares)</b>	<b>Production (1000s Mt)</b>	<b>Yield (Mt/ha)</b>
Early Summer. Aus. (April–August).	2015–2016.	1018.623.	2288.	2.246..
	2014–2015	1045.749	2328	2.226
	2013–2014	1051.822	2326	2.211
Monsoon Aman (July–November)	2015–2016	5592.713	13484	2.411
	2014–2015	5532.389	13190	2.384
	2013–2014	5532.794	13023	2.354
Dry Irrigated Boro (December–April)	2015–2016	4774.899	18938	3.966
	2014–2015	4842.51	19192	3.963
	2013–2014	4792.308	19007	3.966

**Figure S1.** Locations of boro and other classes as identified by high-resolution image interpretation.



**Figure S2.** District-wise map of the HTS-VIs results for 2014–2018.

