

Supplementary Materials:

Table S1. Soil properties based on field investigation in the slide area on Sept. 10, 2017.

Sample point	Number	Depth of sampling (m)	Mass water content (%)	Volumetric water content (m ³ /m ³)	Dry density (kg/m ³)
Top	6	120	75.1	0.47	842
Right	5	100	95.9	0.46	550
Foot	3	100	24.6	0.66	602

Table S2. SAR frames of the Sentinel-A.

Number	Frame	Number	Frame
0	20160116	14	20170215
1	20160209	15	20170311
2	20160304	16	20170404
3	20160328	17	20170428
4	20160421	18	20170522
5	20160515	19	20170627
6	20160608	20	20170709
7	20160726	21	20170721
8	20160819	22	20170802
9	20160912	23	20170814
10	20161006	24	20170826
11	20161123	25	20170907
12	20161217	26	20170919
13	20170110		

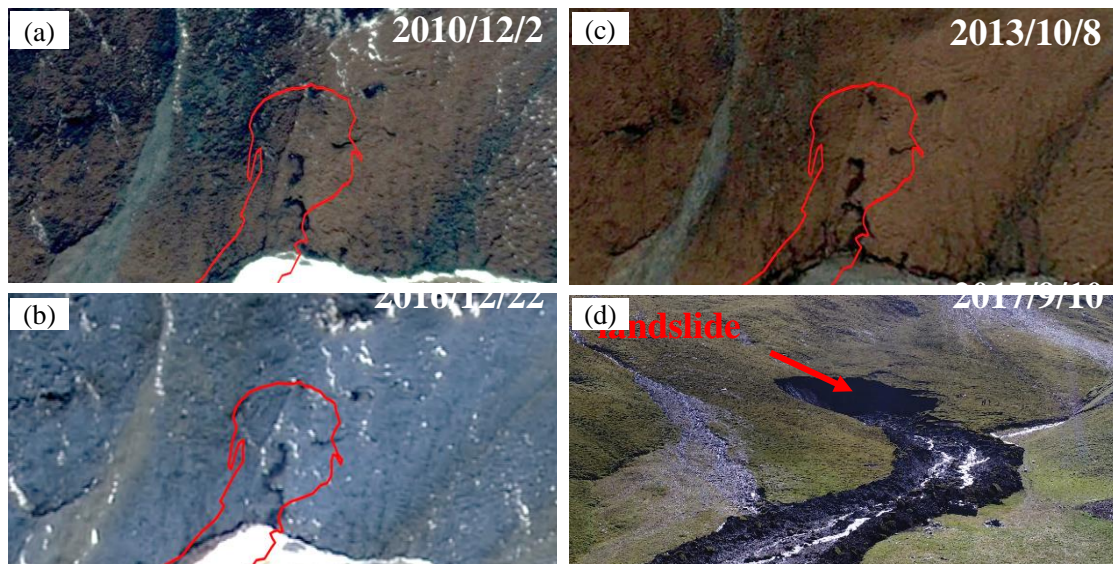


Figure S1. Images of landslide area. Images of the landslide area are shown from (a) December 2010 (Google Earth), (b) October 2013 (Google Earth), (c) December 2016 (GF-2), and (d) September 2017 (UAV). Red curves represent the boundary of landslide.

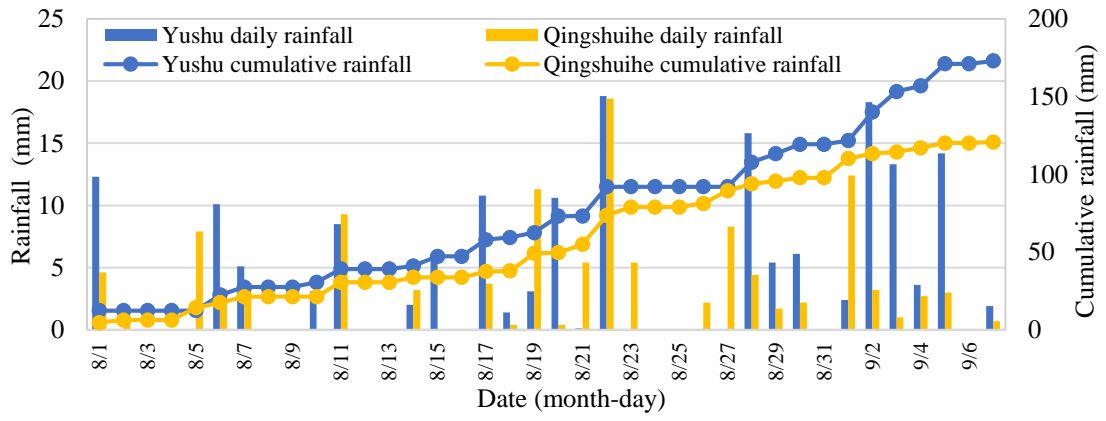


Figure S2. Cumulative precipitation before landslide in Yushu and Qingshuihe meteorological stations.