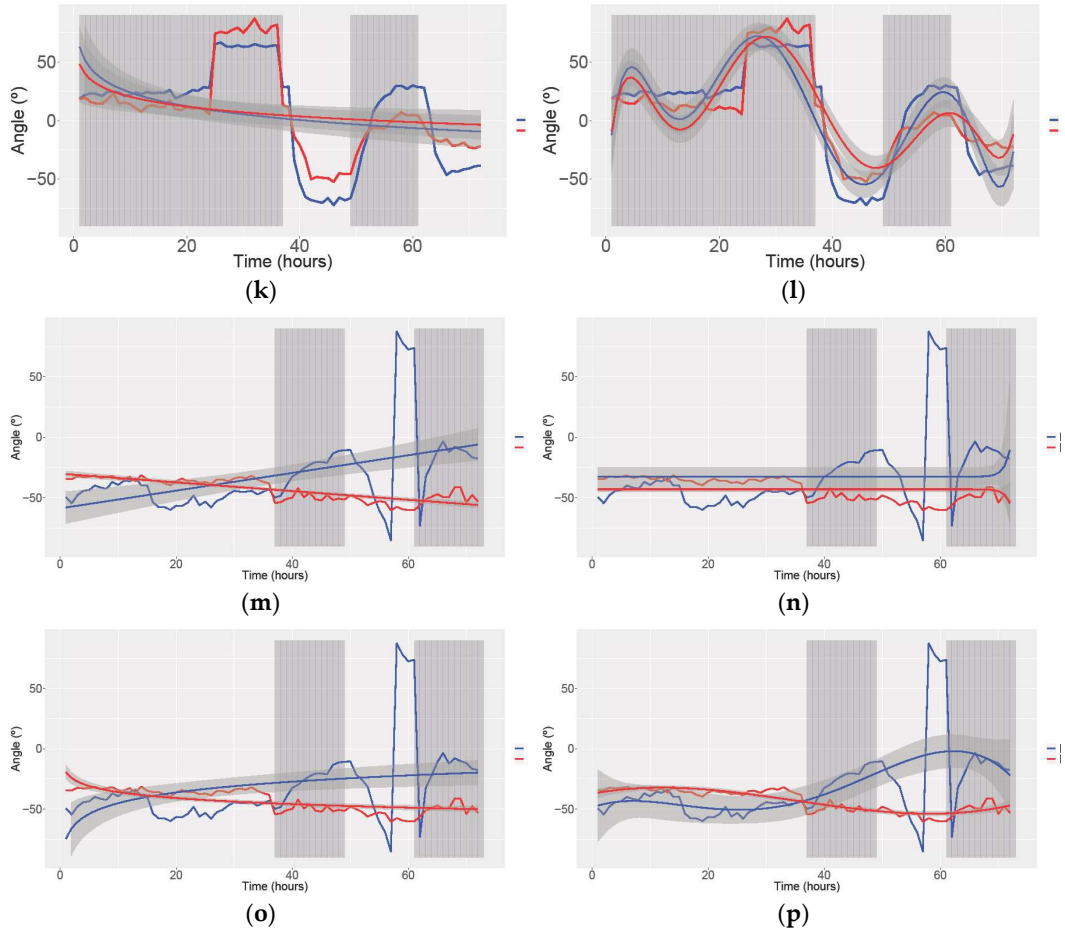
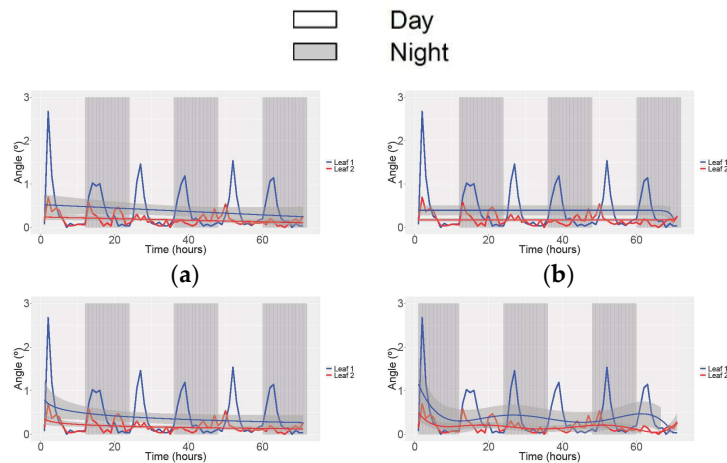


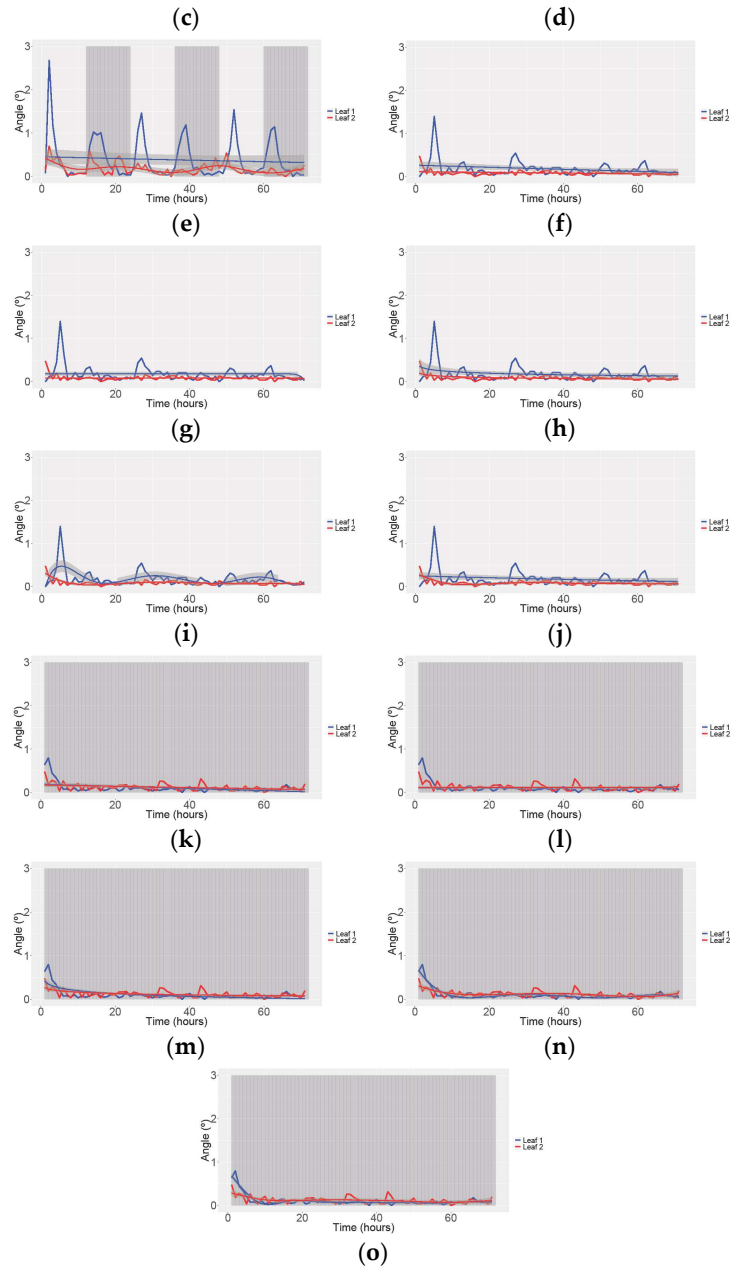
**Figure S1.** Different trend lines with the raw data in the background of leaf movement in *Petunia* for 3 photoperiods: 12/12 hours dark/light (a–c); 24 hours light (d–f); 24 hours dark (g–i); and Linear (a,d,g); Exponential (b,e,h); Logarithmic trend line (c,f,i). The white background corresponds to periods of light while the grey one to darkness. Blue and red lines show the result of each leaf studied. The shadow around each trend line is the confidence Interval at 95%.





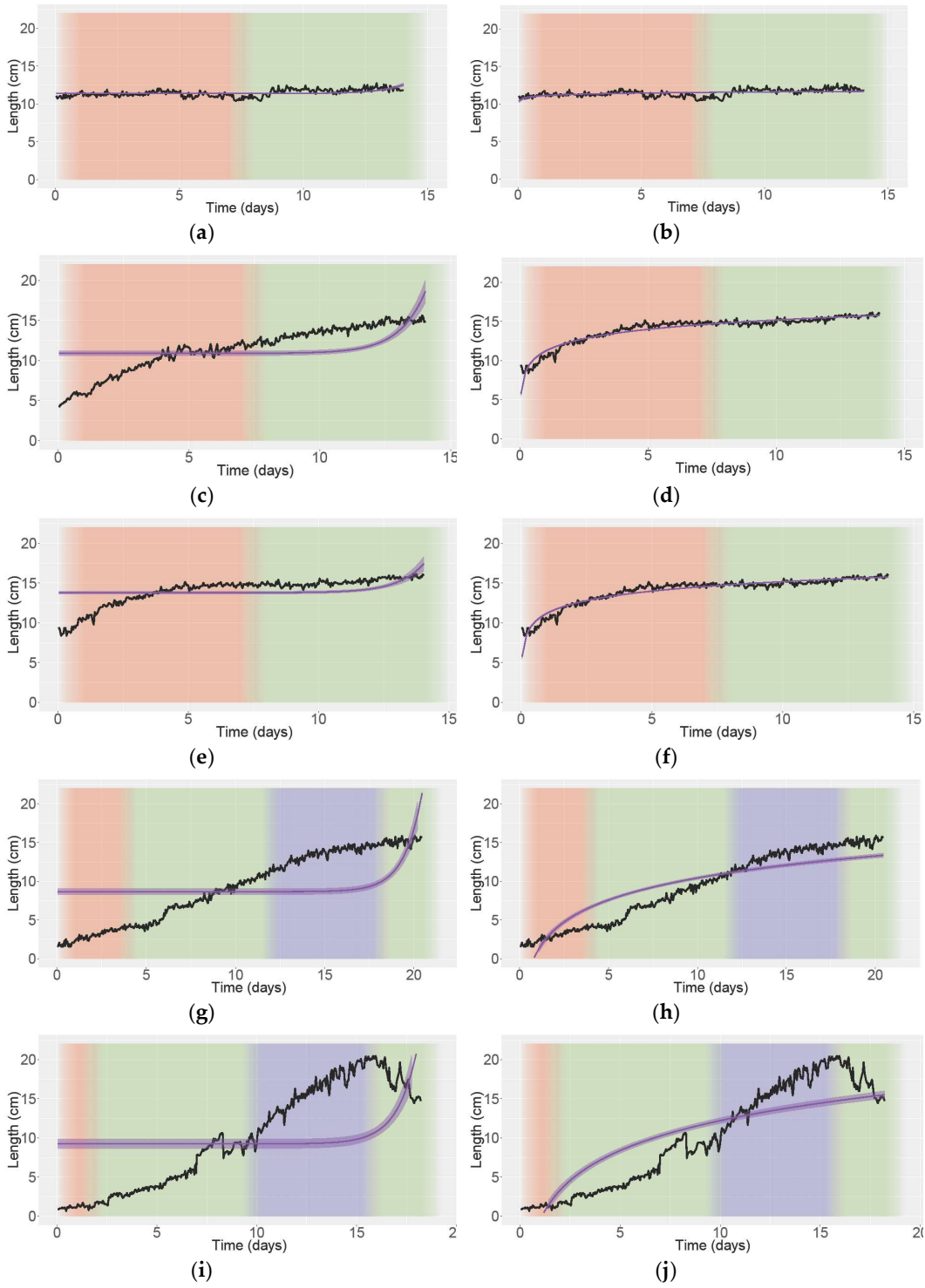
**Figure S2.** Different trend lines with the raw data in the background of leaf movement in *Petunia* for the transition of photoperiods: 12/12 hours light/dark-24 hours dark (a-d); 24 hours dark-12/12 hours dark/light (i-l); 12/12 hours dark/light-24 hours light (e-h); 24 hours light-12/12 hours dark/light (m-p); and Linear (a,e,i,m); Exponential (b,f,j,n); Logarithmic (c,g,k,o); and Polynomial trend line(d,h,l,p). The white background corresponds to periods of light while the grey one to darkness. Blue and red lines show the result of each leaf studied. The shadow around each trend line is the confidence Interval at 95%.

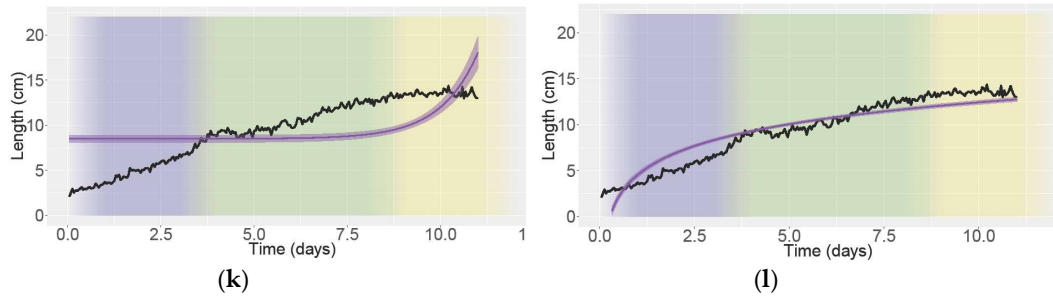




**Figure S3.** Different trend lines with the raw data in the background of leaf movement speed in Petunia for 3 photoperiods: 12/12 hours dark/light (a–e); 24 hours light (f–j); 24 hours dark (k–o); and Linear (a,f,k); Exponential (b,g,l); Logarithmic (c,h,m); Polynomial (d,l,n); and GAM trend line (e,j,o). The white background corresponds to periods of light while the grey one to darkness. Blue and red lines show the result of each leaf studied. The shadow around each trend line is the confidence Interval at 95%.

- High rate 3:7
- Low rate 1:7
- Continuous dark
- Continuous light





**Figure S4.** Growth of stems of Strawberry during 4 different photoperiods: High rate 3:7 B/R (red background); Low rate 1:7 B/R (green background); continuous darkness (blue background); and continuous light (yellow background). Figure **a-b** correspond to stem A; **e-f** to stem B; **i-j** to stem C; **c-d** to stem D; **g-h** to stem E; **k-l** to stem F; and Exponential (**a,c,e,g,i,k**) and Logarithmic (**b,d,f,h,j,l**). The shadow around each trend line is the confidence Interval at 95%. The trend line and the shadow are coloured in purple.